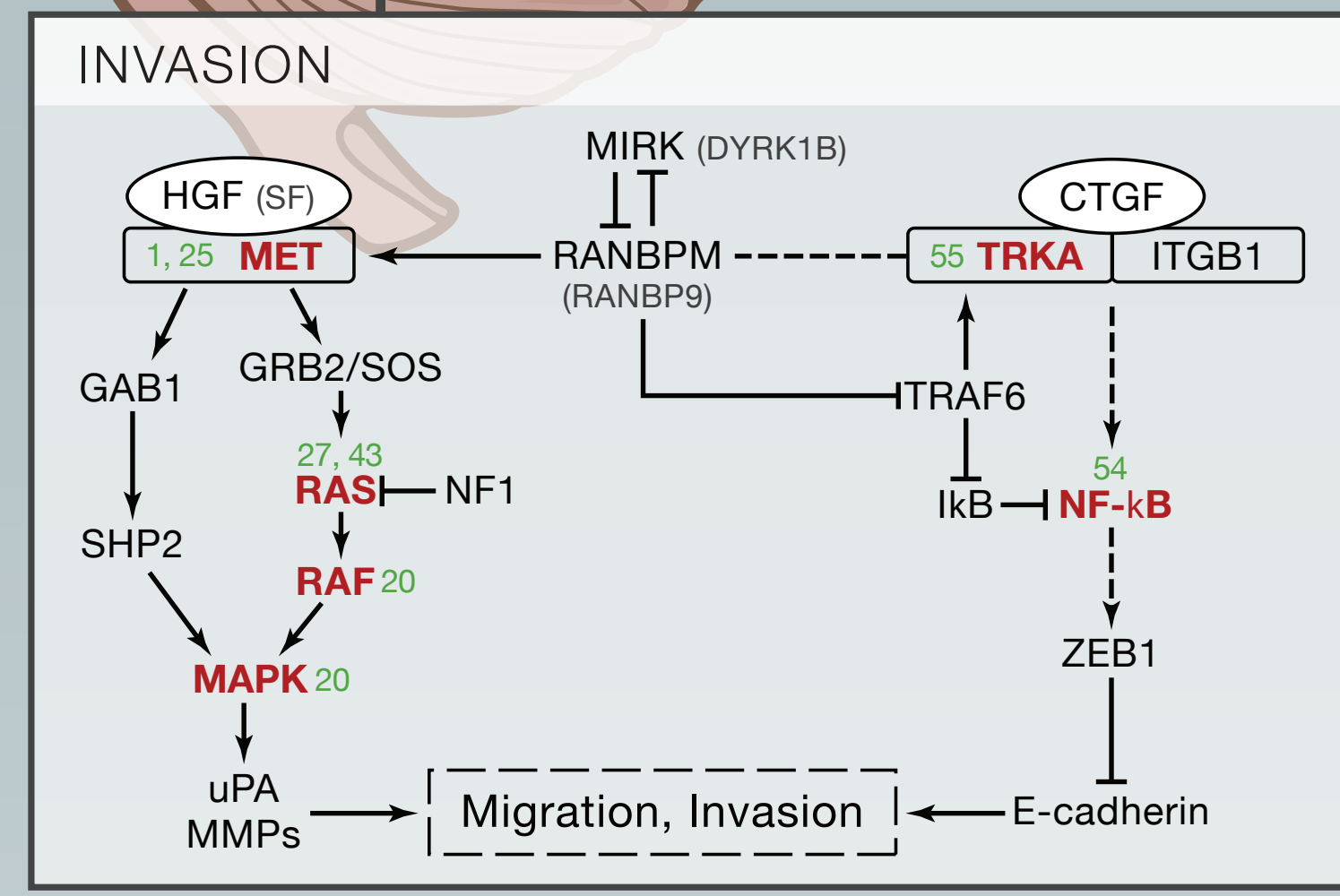
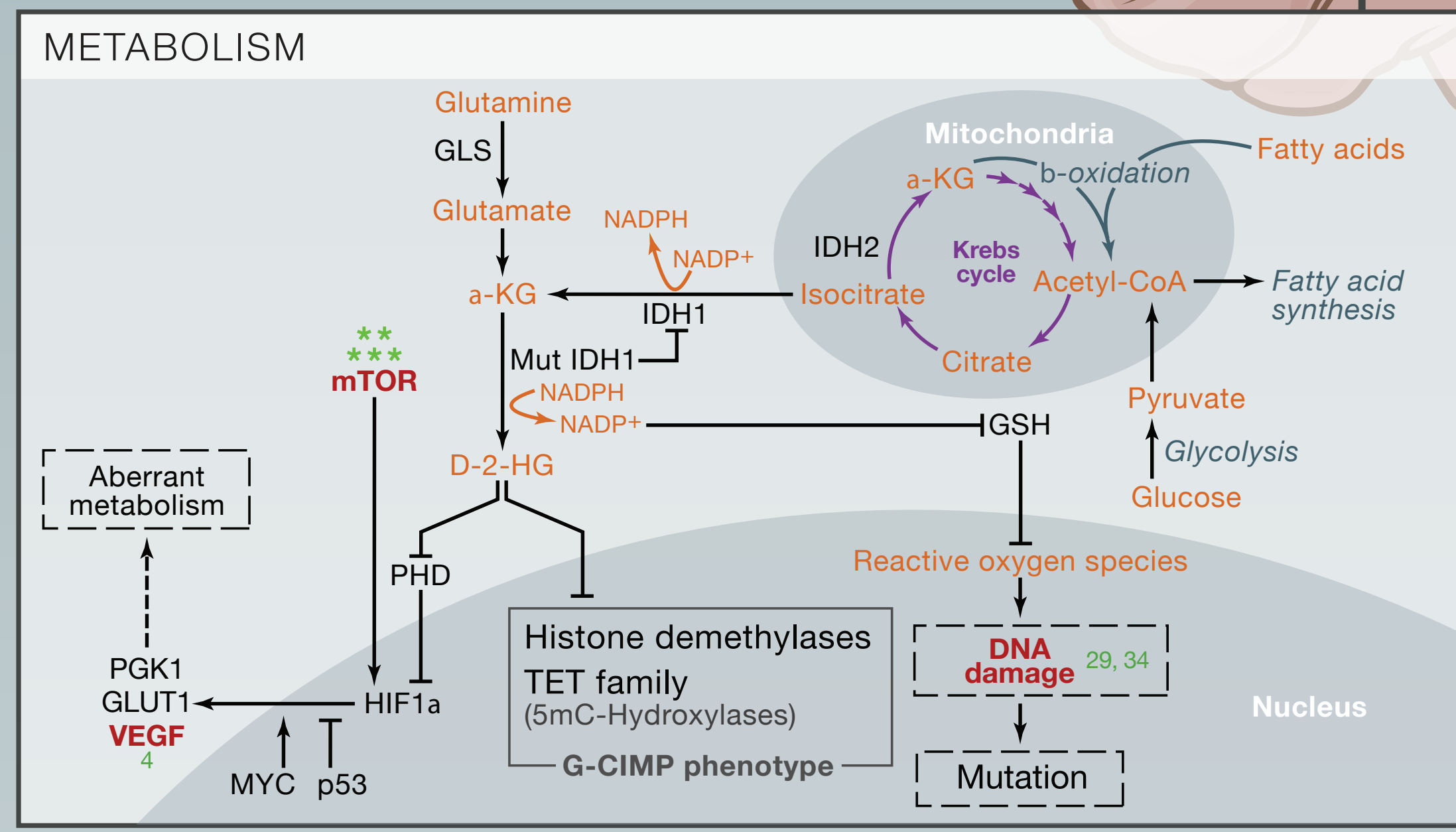
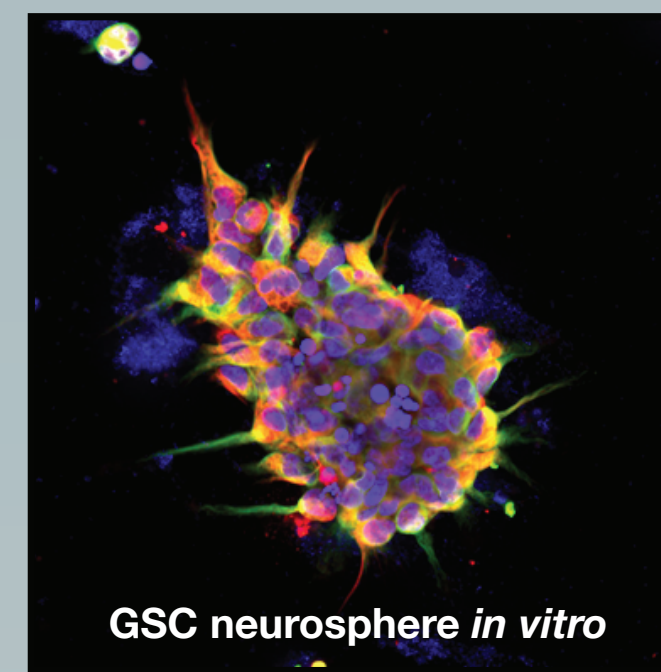
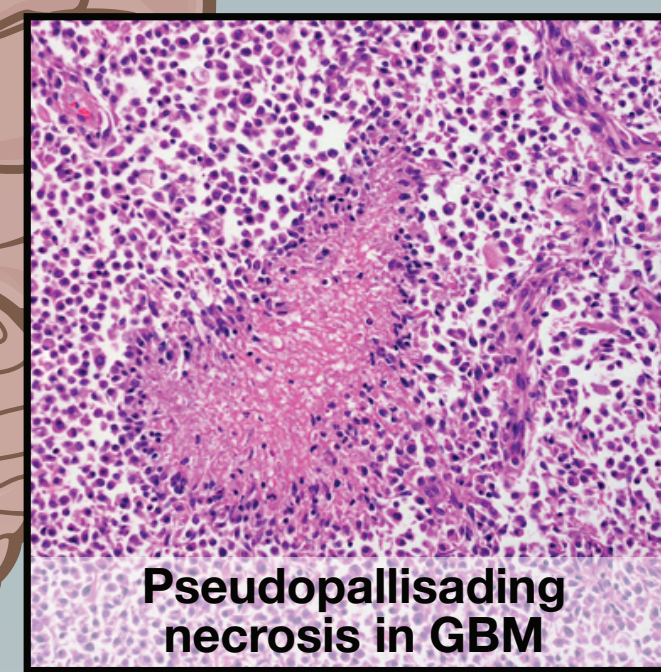
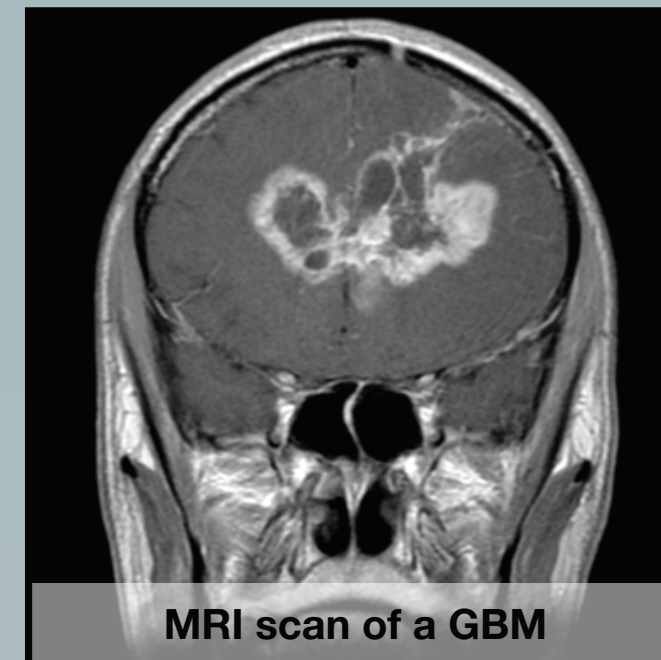
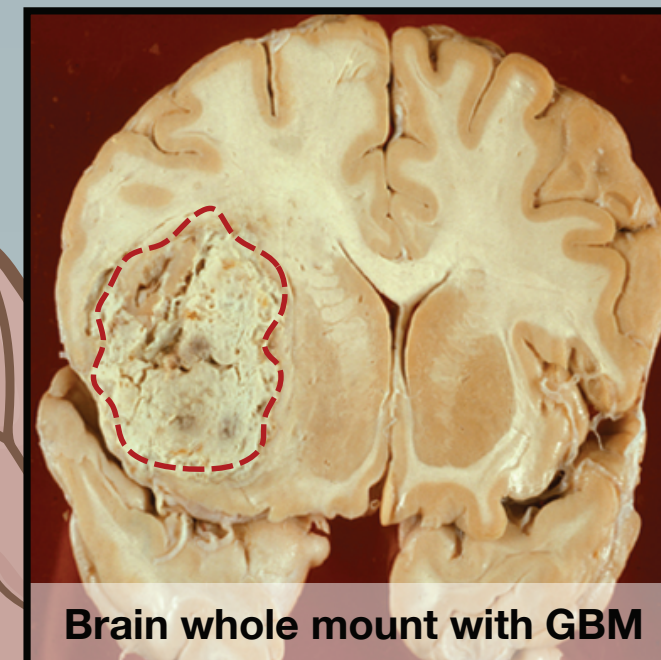
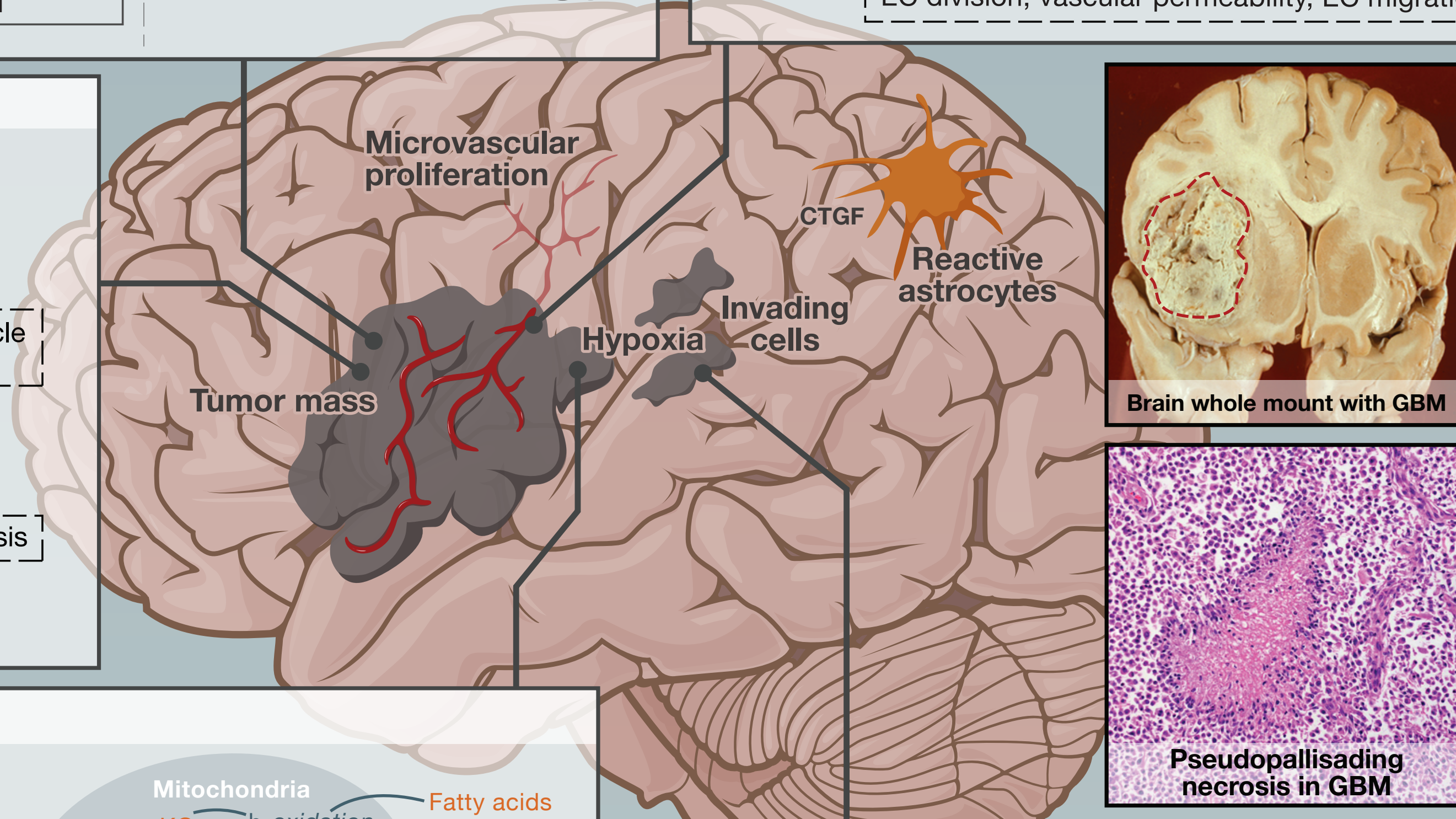
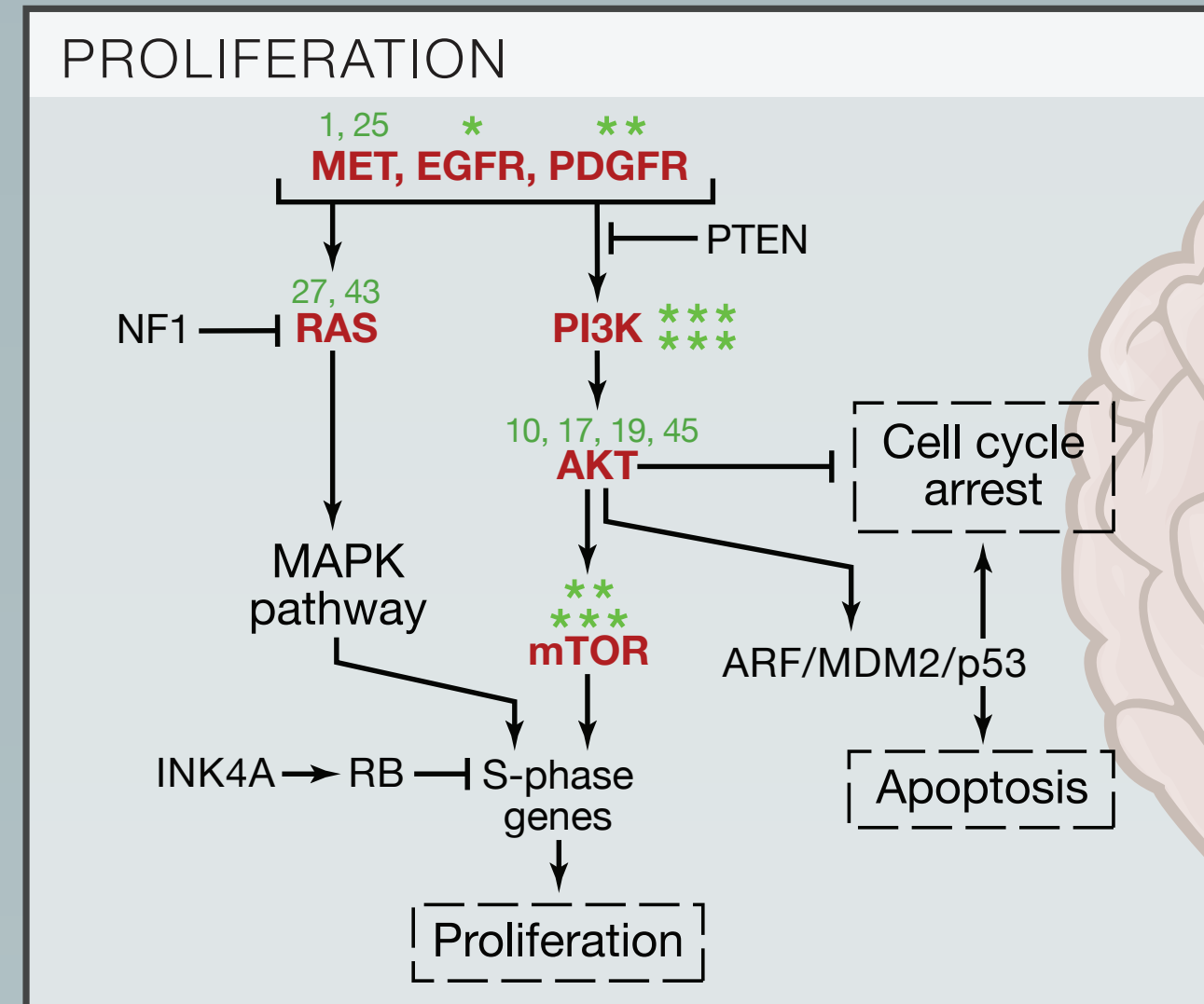
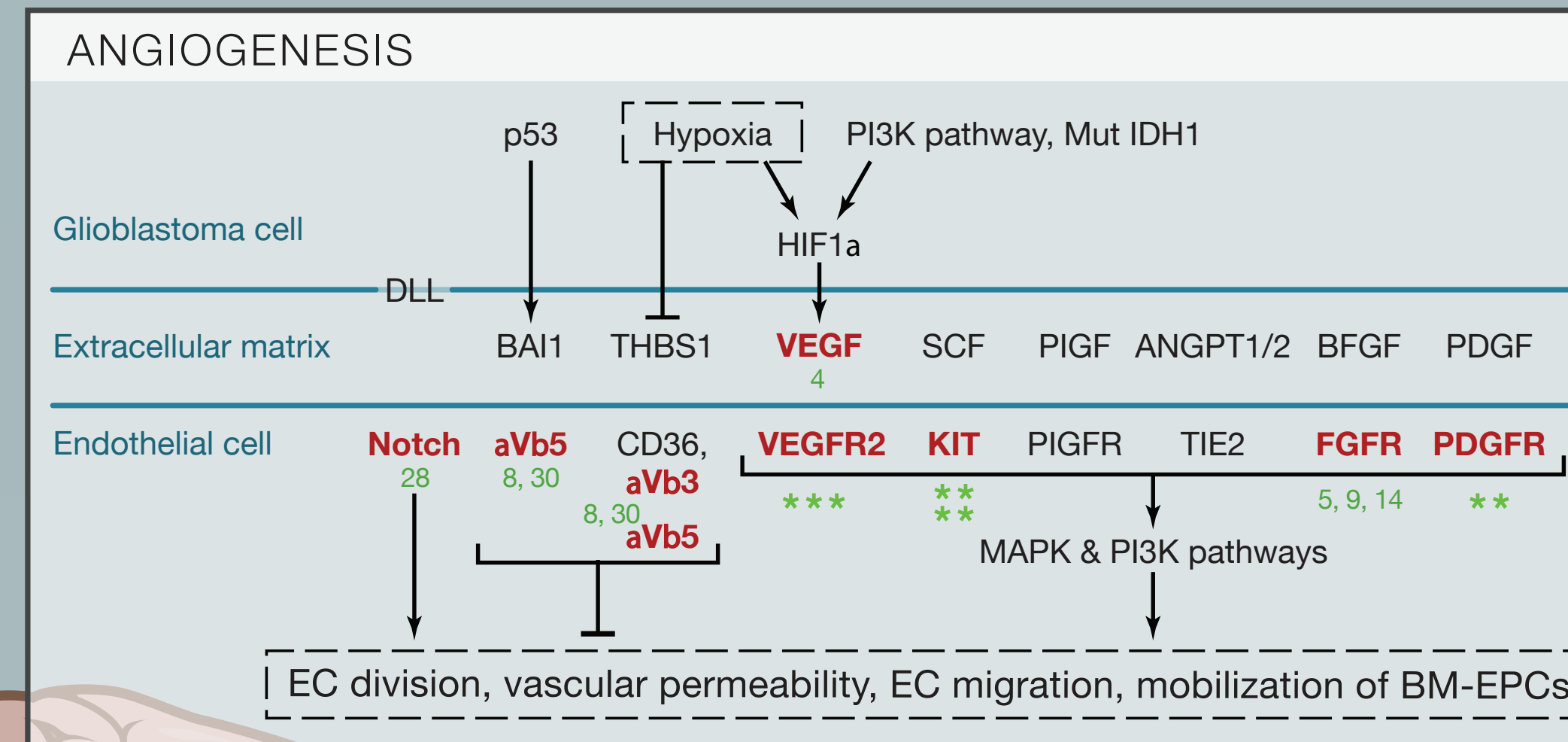
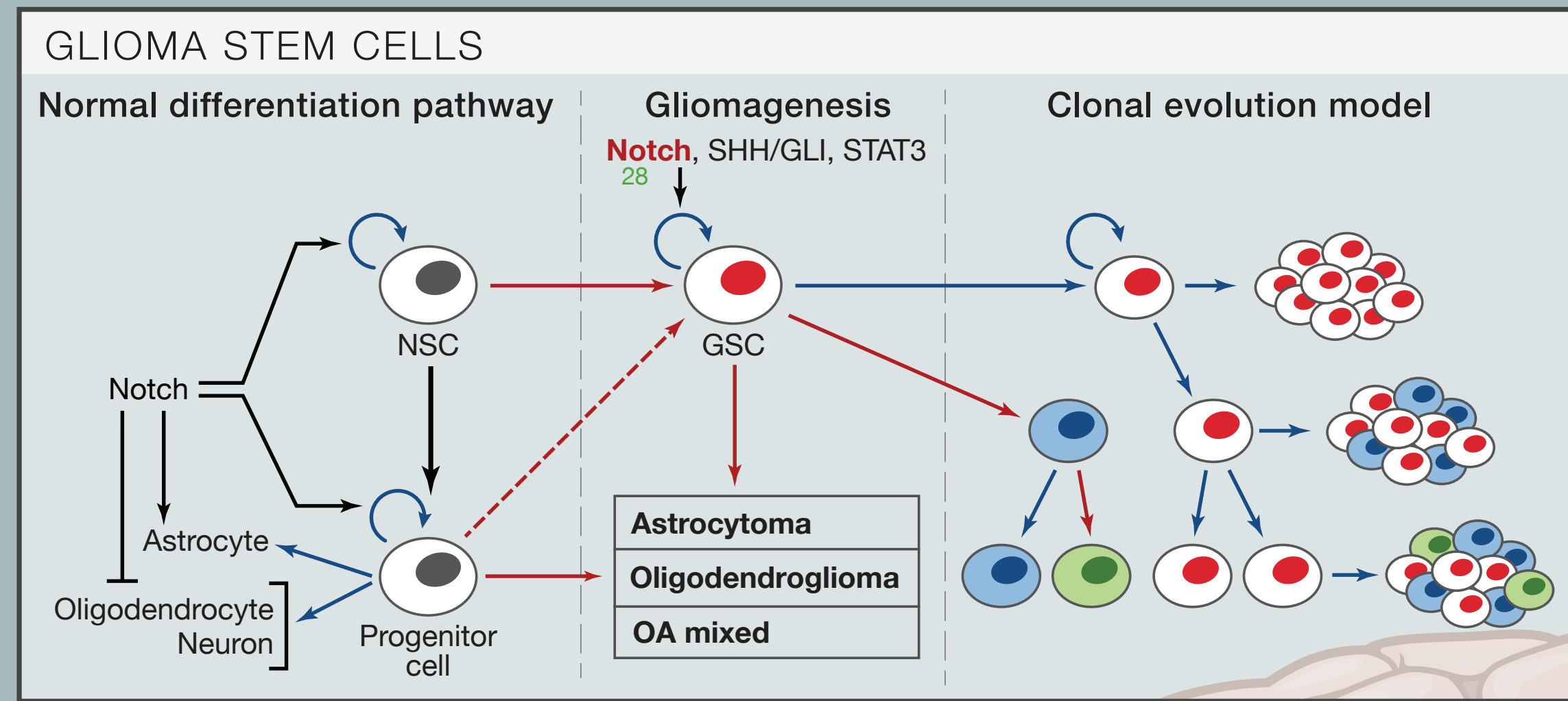


SnapShot: Glioblastoma Multiforme

Svetlana Kotliarova and Howard A. Fine
 Center for Cancer Research, National Cancer Institute, National Institutes for Neurological Disorder and Stroke,
 National Institutes of Health, Bethesda, MD 20892, USA.



Cancer
Cell



These pharmacological agents affect targets shown in red.

*	3, 7, 11, 12, 15, 24, 25, 35, 37, 42, 44, 46, 47
**	6, 9, 13, 14, 18, 20, 21, 22, 41, 52
***	2, 5, 6, 9, 14, 18, 20, 21, 24, 25, 36, 39, 40, 52
**	6, 13, 18, 20, 21, 22, 25
***	23, 26, 31, 32, 38, 50, 51
***	10, 16, 26, 33, 48, 53

#	DRUG
1	Rilotumumab
2	Aflibercept
3	Afatimib
4	Bevacizumab
5	Brivanib
6	Cediranib
7	Cetuximab
8	Cilengtide
9	Lenvatinib mesylate
10	Enzastaurin
11	Erlotinib
12	Gefitinib
13	Imatinib
14	Intedanib
15	Lapatinib
16	BKM120
17	Nelfinavir
18	Pazopanib
19	Perifosine
20	Sorafenib
21	Sunitinib
22	Tandutinib
23	Temsirolimus
24	Vandetanib
25	Cabozantinib
26	XL765
27	Tipifarnib
28	R04929097
29	Veliparib
30	ATN-161
31	AZD8055
32	AZD2014
33	BKM120
34	Iniparib
35	Rindopepimut
36	Pegdinetanib
37	Matuzumab
38	Everolimus
39	Foretinib
40	Ramucirumab
41	Olavatumab
42	I-125 MAB-425
43	Lonafarnib
44	ABT-806
45	MK2206
46	Nimotuzumab
47	Dacomitinib
48	PX-866
49	Panobinostat
50	Ridaforolimus
51	Sirolimus
52	Vatalanib
53	XL147
54	Bortezomib
55	AZD7451

See online version for legend and references.

Culture brain tumor stem cells (BTSCs) with NeuroCult™ NS-A (Catalog #05751):
SPECIALIZED. Formulated to maintain human neural stem cells and BTSCs in long-term culture.
VERSATILE. Supports isolation and proliferation of BTSCs from a variety of tumor types, using either neurosphere or monolayer culture techniques.
CONSISTENT. Conforms to STEMCELL Technologies' stringent quality control standards, including rigorous performance testing using primary cells.

Identify and isolate viable BTSCs:

- **NeuroFluor™ CDR3** (Catalog #01800) for detection and isolation of BTSCs based on FABP7 expression (Yun et al., PNAS 2012).
- **ALDEFLUOR™** (Catalog #01700) for detection and isolation of BTSCs based on aldehyde dehydrogenase (ALDH) enzyme activity.

STEMCELL Technologies is committed to making sure your research works. As Scientists Helping Scientists, we support our customers by creating novel products with consistent un-failing quality and by providing unparalleled technical support.



Scientists Helping Scientists™ | WWW.STEMCELL.COM