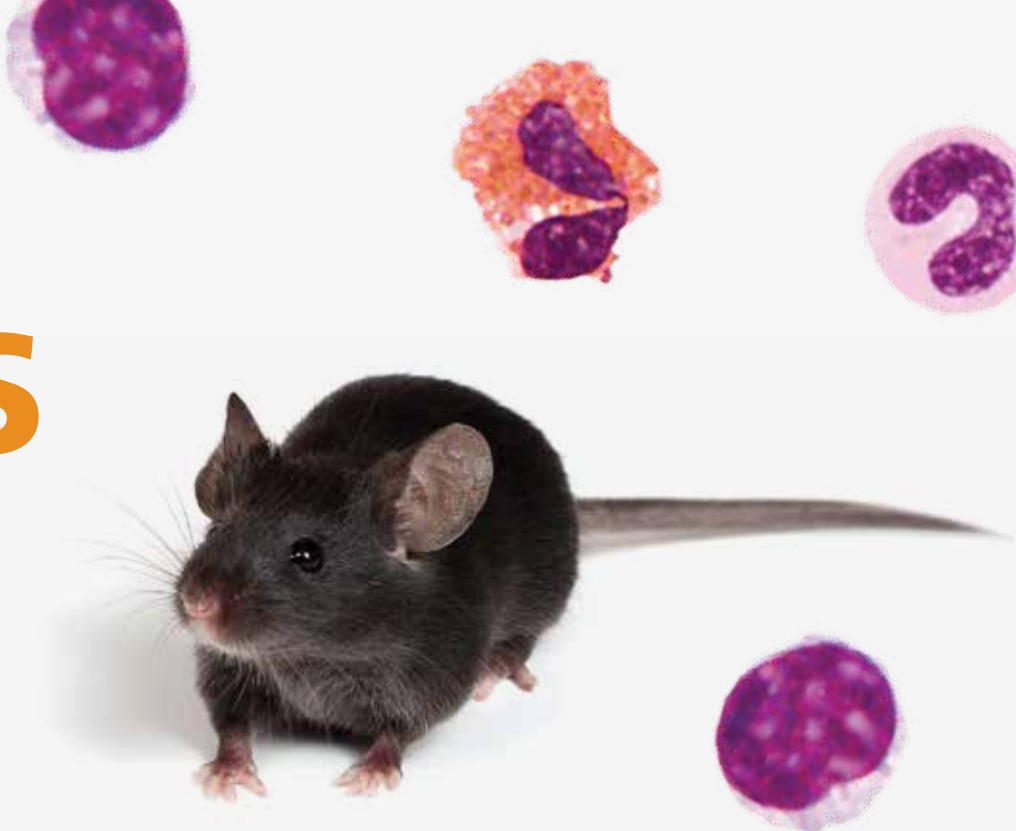


# Frequencies & Percentages of Mouse Immune Cell Types



Cell Type	Tissue Source	Frequencies or Percentages (cells/ $\mu$ L of blood <sup>1,2</sup> or % of total leukocytes <sup>1,2,3</sup> )	STEMCELL Technologies Cell Isolation Kits <sup>5</sup> (Catalog #)	
			Selection Method	
			Negative <sup>6</sup>	Positive <sup>7</sup>
Erythrocytes	Peripheral Blood	$10.6 \pm 0.4 \times 10^6$	—	—
Platelets	Peripheral Blood	$1157 \pm 123 \times 10^3$	—	—
Leukocytes	Peripheral Blood	$2.6 \pm 0.9 \times 10^3$	—	—
Lymphocytes	Peripheral Blood	$2.0 \pm 0.8 \times 10^3$	—	—
T Cells	Spleen	$29.0 \pm 2.4\%$	19851	18951 (CD90.2 <sup>+</sup> )
Naïve T Cells	Spleen	$22.0 \pm 0.9\%$	19848	—
CD4 <sup>+</sup> T Cells	Spleen	$17.3 \pm 2.8\%$	19852	18952 (CD4 <sup>+</sup> )
Naïve CD4 <sup>+</sup> T Cells	Spleen	$12.7 \pm 1.4\%$	19765	18765 (CD4 <sup>+</sup> CD62L <sup>+</sup> )
Memory CD4 <sup>+</sup> T Cells	Spleen	$6.2 \pm 1.7\%$	19767	—
Regulatory T Cells	Spleen	$2.0 \pm 0.3\%$	—	18783 (CD4 <sup>+</sup> CD25 <sup>+</sup> )
CD8 <sup>+</sup> T Cells	Spleen	$11.1 \pm 2.1\%$	19853	18953 (CD8a <sup>+</sup> )
Naïve CD8 <sup>+</sup> T Cells	Spleen	$8.1 \pm 0.9\%$	19858	—
Memory CD8 <sup>+</sup> T Cells	Spleen	$3.4 \pm 1.0\%$	—	—
NK T Cells	Spleen	$1.9 \pm 0.6\%$	—	—
B Cells	Spleen	$57.8 \pm 7.2\%$	19854	18954 (CD19 <sup>+</sup> )
			19844 <sup>8</sup>	
NK Cells	Spleen	$1.1 \pm 0.2\%$	19855	18755 (CD49b <sup>+</sup> )
Monocytes	Spleen	$4.2 \pm 0.7\%$	19861	18970 (CD11b <sup>+</sup> )
	Bone Marrow	$13.2 \pm 2.8\%$		—
	Peripheral Blood	$0.04 \pm 0.03 \times 10^3$		—
Pan-Dendritic Cells	Spleen	$6.5 \pm 1.4\%$	19763	18780 (CD11c <sup>+</sup> )
Conventional Dendritic Cells	Spleen	$4.1 \pm 1.7\%$	—	—
Plasmacytoid Dendritic Cells	Spleen	$0.4 \pm 0.2\%$	19764	—
Neutrophils	Bone Marrow	$34.0 \pm 9.0\%$	19762	—
	Peripheral Blood	$0.5 \pm 0.5 \times 10^3$		
Granulocytes	Spleen	$1.3 \pm 1.4\%$	—	—
Eosinophils	Peripheral Blood	$0.06 \pm 0.05 \times 10^3$	—	—
Basophils	Peripheral Blood	$0.005 \pm 0.006 \times 10^3$	—	—
Hematopoietic Progenitor Cells	Bone Marrow	$0.17 \pm 0.03\%$	19856	18757 (CD117 <sup>+</sup> )
				18756 (Sca1 <sup>+</sup> ) 18856 (Sca1 <sup>+</sup> )

1. Cell type frequencies and percentages are for 6 to 12 week old C57BL/6 or C57BL/6J mice. The values will vary depending on mouse strain, age, gender, and environment. 2. Data sourced from: A. The Jackson Laboratory. Flow-cytometric analysis of 11 inbred strains of mice. MPD:Jaxpheno6. Mouse Phenome Database website, The Jackson Laboratory, Bar Harbor, Maine, USA. <http://phenome.jax.org>, Aug, 2013; B. The Jackson Laboratory. Hematological survey of 11 inbred strains of mice. MPD:Jaxpheno4. Mouse Phenome Database website, The Jackson Laboratory, Bar Harbor, Maine, USA. <http://phenome.jax.org>, Aug, 2013. 3. Data sourced from: C. STEMCELL Technologies' RND Scientists. 4. Peripheral blood values expressed as cells/ $\mu$ L of blood. Spleen and bone marrow values expressed as % of total leukocytes. 5. EasySep™/RoboSep™ Immunomagnetic Isolation. 6. Negative selection labels unwanted cells to isolate desired untouched cells. 7. Positive selection labels and isolates desired cell types. 8. Without CD43 depletion; for pan-B cells.

## Isolate Mouse Immune and Progenitor Cells

**EasySep™** is a powerful immunomagnetic cell isolation platform that combines the specificity of monoclonal antibodies with the simplicity of a column-free magnetic system for fast and easy cell isolation.

[www.EasySep.com](http://www.EasySep.com)

**EasySep™ Release** allows for the positive selection of mouse immune cells followed by the release of bound magnetic particles from your highly purified, isolated cells.

[www.EasySepRelease.com](http://www.EasySepRelease.com)

**RoboSep™** instruments allow for fully automated cell isolation of up to 16 samples using EasySep™ reagents.

[www.RoboSep.com](http://www.RoboSep.com)



Scientists Helping Scientists™ | [WWW.STEMCELL.COM](http://WWW.STEMCELL.COM)

Copyright © 2018 by STEMCELL Technologies Inc. All rights reserved including graphics and images. STEMCELL Technologies & Design, STEMCELL Shield Design, Scientists Helping Scientists, EasySep, RoboSep, RosetteSep, HetaSep, and SepMate are trademarks of STEMCELL Technologies Canada Inc. All other trademarks are the property of their respective holders. While STEMCELL has made all reasonable efforts to ensure that the information provided by STEMCELL and its suppliers is correct, it makes no warranties or representations as to the accuracy or completeness of such information.

FOR RESEARCH USE ONLY. NOT INTENDED FOR HUMAN OR ANIMAL DIAGNOSTIC OR THERAPEUTIC USES. STEMCELL TECHNOLOGIES INC.'S QUALITY MANAGEMENT SYSTEM IS CERTIFIED TO ISO 13485 MEDICAL DEVICE STANDARDS.

DOCUMENT #28048 | VERSION 3.0.0