

# Small Molecules

CGP77675

Src family kinases inhibitor; Inhibits Src, LCK, Yes, Cdc2, EGFR, VEGFR, v-Abl, and FAK

Catalog # 74132  
74134

5 mg  
10 mg



Scientists Helping Scientists™ | WWW.STEMCELL.COM

TOLL FREE PHONE 1 800 667 0322 • PHONE +1 604 877 0713

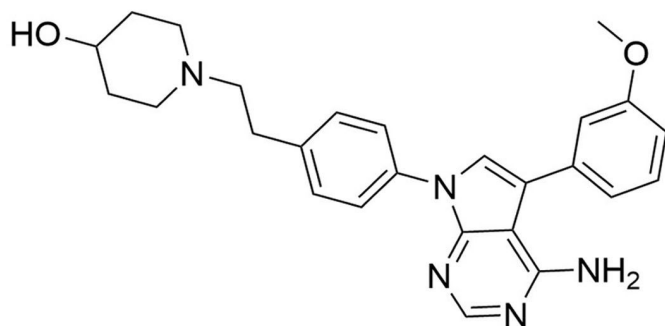
INFO@STEMCELL.COM • TECHSUPPORT@STEMCELL.COM

FOR GLOBAL CONTACT DETAILS VISIT OUR WEBSITE

## Product Description

CGP77675 is a potent inhibitor of Src family kinases. It has been reported to inhibit phosphorylation of peptide substrates and autophosphorylation of purified Src ( $IC_{50}$  = 5 - 20 nM and 40 nM, respectively), Src, and Src kinase family members such as LCK ( $IC_{50}$  = 0.02 mM and 0.29 mM, respectively). It has also been shown to inhibit epidermal growth factor receptor (EGFR), Cdc2, v-Abl, and focal adhesion kinase (FAK) ( $IC_{50}$  = 0.15 mM, > 10 mM, 0.31 mM, and 0.2 mM, respectively; Missbach et al.).

Molecular Name:	CGP77675
Alternative Names:	Not applicable
CAS Number:	234772-64-6
Chemical Formula:	$C_{26}H_{29}N_5O_2$
Molecular Weight:	443.5 g/mol
Purity:	≥ 98%
Chemical Name:	1-[2-[4-[4-amino-5-(3-methoxyphenyl)-7H-pyrrolo[2,3-d]pyrimidin-7-yl]phenyl]ethyl]-4-piperidinol
Structure:	



## Properties

Physical Appearance:	A crystalline solid
Storage:	Product stable at -20°C as supplied. Protect product from prolonged exposure to light. For long-term storage, store with a desiccant. Stable as supplied for 12 months from date of receipt.
Solubility:	· DMSO ≤ 20 mM For example, to prepare a 10 mM stock solution in DMSO, resuspend 1 mg in 225 μL of DMSO.

Prepare stock solution fresh before use. Information regarding stability of small molecules in solution has rarely been reported, however, as a general guide we recommend storage in DMSO at -20°C. Aliquot into working volumes to avoid repeated freeze-thaw cycles. The effect of storage of stock solution on compound performance should be tested for each application.

Compound has low solubility in aqueous media. For use as a cell culture supplement, stock solution should be diluted into culture medium immediately before use. Avoid final DMSO concentration above 0.1% due to potential cell toxicity.

## Published Applications

### MAINTENANCE AND SELF-RENEWAL

- In combination with the GSK3 inhibitor CHIR99021 (Catalog #72052), CGP77675 is used to maintain mouse embryonic stem (ES) cells (Shimizu et al.).
- Preserves the epigenetic and genomic integrity as well as the developmental potential of ES cells (Choi et al.).

## References

Choi J et al. (2017) Prolonged Mek1/2 suppression impairs the developmental potential of embryonic stem cells. *Nature* 548(7666): 219–23.

Missbach M et al. (1999) A novel inhibitor of the tyrosine kinase Src suppresses phosphorylation of its major cellular substrates and reduces bone resorption in vitro and in rodent models in vivo. *Bone* 24(5): 437–49.

Shimizu T et al. (2012) Dual inhibition of Src and GSK3 maintains mouse embryonic stem cells, whose differentiation is mechanically regulated by Src signaling. *Stem Cells* 30(7): 1394–404.

## Related Small Molecules

For a complete list of small molecules available from STEMCELL Technologies, visit [www.stemcell.com/smallmolecules](http://www.stemcell.com/smallmolecules) or contact us at [techsupport@stemcell.com](mailto:techsupport@stemcell.com).

STEMCELL TECHNOLOGIES INC.'S QUALITY MANAGEMENT SYSTEM IS CERTIFIED TO ISO 13485. PRODUCTS ARE FOR RESEARCH USE ONLY AND NOT INTENDED FOR HUMAN OR ANIMAL DIAGNOSTIC OR THERAPEUTIC USES UNLESS OTHERWISE STATED.

Copyright © 2019 by STEMCELL Technologies Inc. All rights reserved including graphics and images. STEMCELL Technologies & Design, STEMCELL Shield Design, and Scientists Helping Scientists are trademarks of STEMCELL Technologies Canada Inc. All other trademarks are the property of their respective holders. While STEMCELL has made all reasonable efforts to ensure that the information provided by STEMCELL and its suppliers is correct, it makes no warranties or representations as to the accuracy or completeness of such information.