

Anti-Human CD32 Antibody, Clone FLI8.26, PE

Antibodies

Mouse monoclonal IgG2b antibody
against human, rhesus, cynomolgus
CD32, PE-conjugated

Catalog #60135PE

100 Tests 20 µL/test



Scientists Helping Scientists™ | WWW.STEMCELL.COM

TOLL FREE PHONE 1 800 667 0322 • PHONE +1 604 877 0713

INFO@STEMCELL.COM • TECHSUPPORT@STEMCELL.COM

FOR GLOBAL CONTACT DETAILS VISIT OUR WEBSITE

Product Description

The FLI8.26 antibody reacts with human CD32 (FcγRII), an ~40 kDa type 1 transmembrane glycoprotein that mediates several functions including phagocytosis, cytotoxicity, immunomodulation, and platelet aggregation. The FLI8.26 antibody cross-reacts with monocytes, granulocytes, and platelets. CD32 is encoded by three genes (A, B, C) and at least 6 isoforms are generated via alternative mRNA splicing, i.e. IIa1, IIa2, IIb1, IIb2, IIb3, and IIc. All isoforms are expressed by monocytes/macrophages, placental trophoblasts, and endothelial cells. In addition, the IIb isoform is expressed by B cells, and the IIa isoform by platelets, granulocytes, and weakly by B cells. Isoform IIc is expressed by NK cells and neutrophils. Clone FLI8.26 has been verified to bind to FcγRIIa and FcγRIIb, and reportedly binds to FcγRIIc, which shares an identical amino acid sequence with FcγRIIb in the signal peptide, extracellular, and transmembrane domains. Clone FLI8.26 inhibits binding of the FcγRIIa-specific clone IV.3 antibody in flow cytometry analyses. CD32 binds weakly to the Fc region of monomeric IgG but more strongly to IgG aggregates and immune complexes. These interactions can result in non-specific labeling in antibody-based detection and cell separation experiments; FLI8.26 antibody may be used as a blocking antibody to reduce non-specific binding.

Target Antigen Name:	CD32
Alternative Names:	CD32a, CD32b, CD32c, FCGR2A, FCGR2B, FCGR2C, FcγRIIa, FcγRIIb, FcγRIIc
Gene ID:	2212
Species Reactivity:	Human, Rhesus, Cynomolgus, Baboon, Chimpanzee
Host Species:	Mouse (BALB/c)
Clonality:	Monoclonal
Clone:	FLI8.26
Isotype:	IgG2b, kappa
Immunogen:	Human erythroleukemia cell line K562
Conjugate:	PE (Phycoerythrin)

Applications

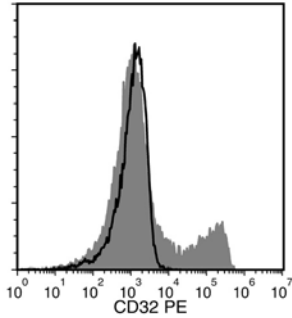
Verified:	FC
Reported:	FC

Abbreviations: CellSep: Cell separation; ChIP: Chromatin immunoprecipitation; FA: Functional assay; FACS: Fluorescence-activated cell sorting; FC: Flow cytometry; ICC: Immunocytochemistry; IF: Immunofluorescence microscopy; IHC: Immunohistochemistry; IP: Immunoprecipitation; RIA: Radioimmunoassay; WB: Western blotting

Properties

Formulation:	Aqueous buffered solution containing BSA and ≤ 0.09% sodium azide
Purification:	The antibody was purified by affinity chromatography and conjugated with PE under optimal conditions. The solution is free of unconjugated PE.
Stability and Storage:	Product stable at 2 - 8°C when stored undiluted. Do not freeze. Protect product from prolonged exposure to light. For product expiry date, please contact techsupport@stemcell.com.
Directions for Use:	For flow cytometry, the suggested use of this antibody is ≤ 1 µg per 1 x 10 ⁶ cells in 100 µL. It is recommended that the antibody be titrated for optimal performance for each application.

Data



Flow cytometry analysis of human peripheral blood mononuclear cells (PBMCs) labeled with Anti-Human CD32 Antibody, Clone FLI8.26, PE (filled histogram), or Mouse IgG2b, kappa Isotype Control Antibody, Clone MPC-11, PE (Catalog #60072PE; solid line histogram).

Related Products

For a complete list of antibodies, including other conjugates, sizes and clones, as well as related products available from STEMCELL Technologies, please visit our website at www.stemcell.com/antibodies or contact us at techsupport@stemcell.com.

References

1. Gestermann N et al. (2018) Netting neutrophils activate autoreactive B cells in lupus. *J Immunol.* 200(10): 3364–71. (Blocking)
2. Bazzi S et al. (2015) Analysis of the immunomodulatory properties of two heat-killed mycobacterial preparations in a human whole blood model. *Immunobiology* 220(12): 1293–304. (FC)
3. Meknache N et al. (2009) Human basophils express the glycosylphosphatidylinositol-anchored low-affinity IgG receptor FcγRIIB (CD16B). *J Immunol.* 182(4): 2542–50. (FC)
4. Yang J et al. (2007) Human C-reactive protein binds activating Fcγ receptors and protects myeloma tumor cells from apoptosis. *Cancer Cell.* 12(3): 252–65. (Blocking)
5. Saad F et al. (2006) OxLDL immune complexes activate complement and induce cytokine production by MonoMac 6 cells and human macrophages. *J Lipid Research* 47(9): 1975–83. (Blocking)
6. van Royen-Kerkhof A et al. (2005) A novel human CD32 mAb blocks experimental immune haemolytic anaemia in FcγRIIA transgenic mice. *Br J Haematol* 130(1): 130–7. (FC)
7. van den Herik-Oudijk IE et al. (1995) Binding heterogeneity within the CD32 panel of mAb. In: Schlossman SF et al. (Eds), *Leukocyte Typing V: White Cell Differentiation Antigens (832–4)*. Oxford, U.K.: Oxford University Press. (FC, IP)
8. Ierino FL et al. (1993) Mapping epitopes of human Fc gamma RII (CDw32) with monoclonal antibodies and recombinant receptors. *J Immunol* 150(5): 1794–803. (FC)

STEMCELL TECHNOLOGIES INC.'S QUALITY MANAGEMENT SYSTEM IS CERTIFIED TO ISO 13485. PRODUCTS ARE FOR RESEARCH USE ONLY AND NOT INTENDED FOR HUMAN OR ANIMAL DIAGNOSTIC OR THERAPEUTIC USES UNLESS OTHERWISE STATED.

Copyright © 2018 by STEMCELL Technologies Inc. All rights reserved including graphics and images. STEMCELL Technologies & Design, STEMCELL Shield Design, and Scientists Helping Scientists are trademarks of STEMCELL Technologies Canada Inc. All other trademarks are the property of their respective holders. While STEMCELL has made all reasonable efforts to ensure that the information provided by STEMCELL and its suppliers is correct, it makes no warranties or representations as to the accuracy or completeness of such information.