

1 kb DNA Ladder

DNA ladder consisting of 13 fragments from 250 - 10,000 base pairs for determining the size of double-stranded DNA by gel electrophoresis



Scientists Helping Scientists™ | www.stemcell.com

TOLL FREE PHONE 1 800 667 0322 • PHONE +1 604 877 0713

[INFO@STEMCELL.COM](mailto:info@stemcell.com) • [TECHSUPPORT@STEMCELL.COM](mailto:techsupport@stemcell.com)

FOR GLOBAL CONTACT DETAILS VISIT OUR WEBSITE

Catalog # 79017 600 µL

Product Description

1 kb DNA Ladder allows for determining the size of double-stranded DNA from 250 - 10,000 base pairs (bp). The ladder consists of 13 double-stranded, blunt-end fragments, of sizes 250, 500, 750, 1000, 1500, 2000, 2500, 3000, 4000, 5000, 6000, 8000, and 10,000 bp (see Figure 1). The 1000 and 3000 bp fragments have greater intensity relative to the other bands and can be used as reference indicators when viewed on stained agarose gels. While all other fragments appear with equal intensity on the gel, they are not intended for quantitative analysis. This DNA ladder comes pre-mixed with DNA Loading Dye, which is also available for individual sale (Catalog #79018), for loading DNA samples into agarose gel wells. The recommended loading volume of 1 kb DNA Ladder is 6 µL per lane.

Properties

Storage: Store at -30°C to +30°C.
Shelf Life: Stable until expiry date (EXP) on label.

Directions for Use

If product is frozen, thaw at room temperature (15 - 25°C). Mix well prior to use. Recommended loading volume is 6 µL per lane. Use this product as directed in the protocol of choice.

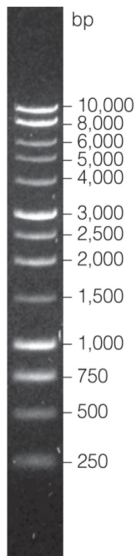


Figure 1. 1 kb DNA Ladder after electrophoresis on a 1% agarose gel

NOTE: If run on a 2% agarose gel, an additional band at 253 bp may be visible.

Related Products

For related products, including genome editing tools, qPCR arrays, specialized cell culture and storage media, and cultureware, visit www.stemcell.com or contact us at techsupport@stemcell.com.

STEMCELL TECHNOLOGIES INC.'S QUALITY MANAGEMENT SYSTEM IS CERTIFIED TO ISO 13485. PRODUCTS ARE FOR RESEARCH USE ONLY AND NOT INTENDED FOR HUMAN OR ANIMAL DIAGNOSTIC OR THERAPEUTIC USES UNLESS OTHERWISE STATED.

Copyright © 2018 by STEMCELL Technologies Inc. All rights reserved including graphics and images. STEMCELL Technologies & Design, STEMCELL Shield Design, and Scientists Helping Scientists are trademarks of STEMCELL Technologies Canada Inc. All other trademarks are the property of their respective holders. While STEMCELL has made all reasonable efforts to ensure that the information provided by STEMCELL and its suppliers is correct, it makes no warranties or representations as to the accuracy or completeness of such information.