

## Antibodies

### Anti-Mouse NK1.1 (CD161) Antibody, Clone PK136, Pacific Blue™

Mouse monoclonal IgG2a antibody  
against mouse NK1.1 (CD161), Pacific  
Blue™-conjugated

Catalog #60103PB  
#60103PB.1

100 µg 0.5 mg/mL  
25 µg 0.5 mg/mL



Scientists Helping Scientists™ | WWW.STEMCELL.COM

TOLL FREE PHONE 1 800 667 0322 • PHONE +1 604 877 0713

INFO@STEMCELL.COM • TECHSUPPORT@STEMCELL.COM

FOR GLOBAL CONTACT DETAILS VISIT OUR WEBSITE

## Product Description

The PK136 antibody reacts with murine NK1.1 (CD161), an ~80 kDa homodimeric type 2 transmembrane glycoprotein and C-type lectin receptor expressed on NK cells, NK-T cells, and rare subsets of T cells and monocytes in select strains of mice. NK1.1 is encoded by the Klrb1b and Klrb1c genes, which specify CD161b and CD161c polypeptides, respectively. CD161b is expressed only by Swiss NIH and SJL mice, and CD161c by certain strains such as C57BL, FVB/N, and NZB (but not A, AKR, BALB/c, CBA/J, C3H, C57BR, C58, DBA/1, DBA/2, NOD, SJL, or 129). NK1.1 has functional roles in modulating several processes, including the activation and proliferation of NK cells, induction of interferon- $\gamma$  production, and release of cytotoxic granules. Its expression on the cell surface is specifically upregulated by IL-12. For detection of NK cells in NK1.1- strains, Anti-Mouse CD49b Antibody, Clone DX5 (Catalog #60020) is recommended. DX5 recognizes CD49b (integrin  $\alpha 2$ ), another commonly used NK cell marker.

Target Antigen Name:	NK1.1 (CD161)
Alternative Names:	CD161b, CD161c, Klrb1b, Klrb1c, Ly-55, Ly-59, NK-1.1, NKRP1, NKRP1a, NKRP1b
Gene ID:	17059
Species Reactivity:	Mouse (strain-specific)
Host Species:	(C3H x BALB/c) F1 hybrid
Clonality:	Monoclonal
Clone:	PK136
Isotype:	IgG2a, kappa
Immunogen:	NK-1+ cells from mouse spleen and bone marrow
Conjugate:	Pacific Blue™

## Applications

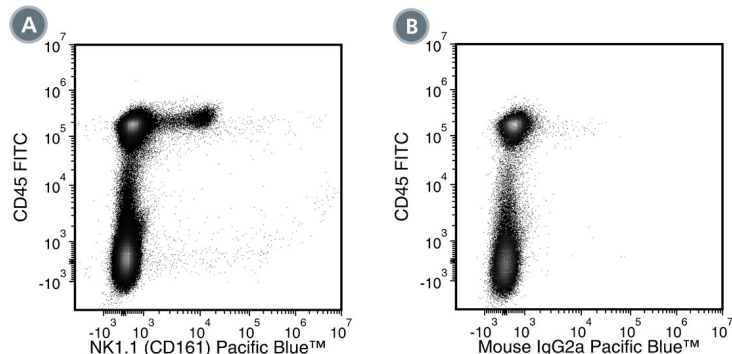
Verified:	FC
Reported:	FC
Special Applications:	This antibody clone has been verified for purity assessments of cells isolated from NK1.1+ mouse strains such as C57BL/6, FVB/N, NZB, Swiss NIH, and SJL with EasySep™ kits, including EasySep™ Mouse NK Cell Isolation Kit (Catalog #19855).

Abbreviations: CellSep: Cell separation; ChIP: Chromatin immunoprecipitation; FA: Functional assay; FACS: Fluorescence-activated cell sorting; FC: Flow cytometry; ICC: Immunocytochemistry; IF: Immunofluorescence microscopy; IHC: Immunohistochemistry; IP: Immunoprecipitation; RIA: Radioimmunoassay; WB: Western blotting

## Properties

Formulation:	Phosphate-buffered solution, pH 7.2, containing 0.09% sodium azide
Purification:	The antibody was purified by affinity chromatography and conjugated with Pacific Blue™ under optimal conditions. The solution is free of unconjugated Pacific Blue™.
Stability and Storage:	Product stable at 2 - 8°C when stored undiluted. Do not freeze. Protect product from prolonged exposure to light. For product expiry date, please contact techsupport@stemcell.com.
Directions for Use:	For flow cytometry, the suggested use of this antibody is $\leq 1 \mu\text{g}$ per $1 \times 10^6$ cells in 100 $\mu\text{L}$ . It is recommended that the antibody be titrated for optimal performance for each application.

## Data



(A) Flow cytometry analysis of C57BL/6 mouse splenocytes (gated on lymphocytes) labeled with Anti-Mouse NK1.1 (CD161) Antibody, Clone PK136, Pacific Blue™ and Anti-Mouse CD45 Antibody, Clone 30-F11, FITC (Catalog #60030FI).

(B) Flow cytometry analysis of C57BL/6 mouse splenocytes (gated on lymphocytes) labeled with a mouse IgG2a, kappa Pacific Blue™ isotype control antibody and Anti-Mouse CD45 Antibody, Clone 30-F11, FITC.

## Related Products

For a complete list of antibodies, including other conjugates, sizes and clones, as well as related products available from STEMCELL Technologies, please visit our website at [www.stemcell.com/antibodies](http://www.stemcell.com/antibodies) or contact us at [techsupport@stemcell.com](mailto:techsupport@stemcell.com).

## References

- McAllister CS et al. (2013) TLR3, TRIF, and caspase 8 determine double-stranded RNA-induced epithelial cell death and survival in vivo. *J Immunol* 190(1): 418–27. (Depletion, IHC)
- Mitchell AJ et al. (2012) Inflammasome-dependent IFN- $\gamma$  drives pathogenesis in *Streptococcus pneumoniae* meningitis. *J Immunol* 189(10): 4970–80. (FC)
- Xie X et al. (2010) MHC class I D(k) expression in hematopoietic and nonhematopoietic cells confers natural killer cell resistance to murine cytomegalovirus. *Proc Natl Acad Sci USA* 107(19): 8754–9. (Depletion, FA/Stimulation, FC)
- Zandi S et al. (2008) EBF1 is essential for B-lineage priming and establishment of a transcription factor network in common lymphoid progenitors. *J Immunol* 181(5): 3364–72. (FC)
- Kulesza J et al. (2006) NK cell depletion and recovery in SCID mice treated with anti-NK1.1 antibody. *Folia Histochem Cytobiol* 44(2): 93–6. (Depletion)
- Carnemolla B et al. (2002) Enhancement of the antitumor properties of interleukin-2 by its targeted delivery to the tumor blood vessel extracellular matrix. *Blood* 99(5): 1659–65. (IHC)
- Kitaichi N et al. (2002) Diminution of experimental autoimmune uveoretinitis (EAU) in mice depleted of NK cells. *J Leukoc Biol* 72(6): 1117–21. (Depletion)
- Kanwar JR et al. (2001) Effects of survivin antagonists on growth of established tumors and B7-1 immunogene therapy. *J Natl Cancer Inst* 93(20): 1541–52. (Depletion, IHC, IF)
- Carlyle JR et al. (1999) Mouse NKR-P1B, a novel NK1.1 antigen with inhibitory function. *J Immunol* 162(10): 5917–23. (FA, FC, IP)
- Kung SK et al. (1999) The NKR-P1B gene product is an inhibitory receptor on SJL/J NK cells. *J Immunol* 162(10): 5876–87. (FA, FC, IP)
- Reichlin A & Yokoyama WM. (1998) Natural killer cell proliferation induced by anti-NK1.1 and IL-2. *Immunol Cell Biol* 76(2): 143–52. (FA/Stimulation, FC)

STEMCELL TECHNOLOGIES INC.'S QUALITY MANAGEMENT SYSTEM IS CERTIFIED TO ISO 13485. PRODUCTS ARE FOR RESEARCH USE ONLY AND NOT INTENDED FOR HUMAN OR ANIMAL DIAGNOSTIC OR THERAPEUTIC USES UNLESS OTHERWISE STATED.

Copyright © 2017 by STEMCELL Technologies Inc. All rights reserved including graphics and images. STEMCELL Technologies & Design, STEMCELL Shield Design, Scientists Helping Scientists, and EasySep are trademarks of STEMCELL Technologies Canada Inc. CyTOF is a registered trademark of Fluidigm Corporation. All other trademarks are the property of their respective holders. Alexa Fluor® and Pacific Blue™ are trademarks of Life Technologies Corporation. Antibodies conjugated to Alexa Fluor® or Pacific Blue™ are licensed for internal research use only and sale is expressly conditioned on the buyer not using the antibody for manufacturing, performing a service or medical test, or otherwise generating revenue. For use other than research, contact Life Technologies Corporation, 5791 Van Allen Way, Carlsbad, CA 92008 USA or [outlicensing@lifetech.com](mailto:outlicensing@lifetech.com). While STEMCELL has made all reasonable efforts to ensure that the information provided by STEMCELL and its suppliers is correct, it makes no warranties or representations as to the accuracy or completeness of such information.