



EasySep™ Rat IgM Depletion Kit

Positive Selection
Catalog #18644

For processing 1 x 10⁹ cells



Scientists Helping Scientists™ | WWW.STEMCELL.COM

TOLL FREE PHONE 1 800 667 0322 • PHONE +1 604 877 0713
INFO@STEMCELL.COM • TECHSUPPORT@STEMCELL.COM
FOR GLOBAL CONTACT DETAILS VISIT OUR WEBSITE

Document #DX21577 | Version 1_0_0

Description

Deplete IgM+ cells from rat splenocytes, lymph nodes, or whole blood by immunomagnetic positive selection. When using a single-cell suspension from other tissue types, this kit may require optimization.

- Fast, easy-to-use and column-free
- Up to 90% purity (≤ 10% IgM+)
- Isolated cells are untouched

This kit targets IgM+ cells for removal with antibodies recognizing specific cell surface markers. Unwanted cells are labeled with antibodies and magnetic particles, and separated without columns using an EasySep™ magnet. Desired cells are simply poured off into a new tube. Isolated cells are immediately available for downstream applications such as flow cytometry, cell culture, or DNA/RNA extraction.

Component Descriptions

COMPONENT NAME	COMPONENT #	QUANTITY	STORAGE	SHELF LIFE	FORMAT
EasySep™ Rat IgM Depletion Cocktail	18644C	1 x 1 mL	Store at 2 - 8°C. Do not freeze.	Stable until expiry date (EXP) on label.	A combination of monoclonal antibodies in PBS and 0.1% BSA.
EasySep™ Dextran RapidSpheres™ 50102	50102	1 x 1 mL	Store at 2 - 8°C. Do not freeze.	Stable until expiry date (EXP) on label.	A suspension of magnetic particles in water.
Anti-Rat CD32 Blocker	18521	1 x 0.1 mL	Store at 2 - 8°C. Do not freeze.	Stable until expiry date (EXP) on label.	A combination of monoclonal antibodies in PBS, 0.1% BSA, and < 0.1% sodium azide.

BSA - bovine serum albumin; PBS - phosphate-buffered saline

Components may be shipped at room temperature (15 - 25°C) but should be stored as indicated above.

Sample Preparation

SPLEEN or LYMPH NODE

Disrupt spleen or lymph node in recommended medium. Remove aggregates and debris by passing cell suspension through a pre-wetted 70 µm mesh nylon strainer. Centrifuge at 120 x g for 10 minutes with the brake off. Remove the supernatant and resuspend at 5 x 10⁷ nucleated cells/mL in recommended medium.

If aggregation persists, pass the cell suspension through a pre-wetted 70 µm mesh nylon strainer a second time and centrifuge at 120 x g for 10 minutes with the brake off. Remove the supernatant and resuspend the cells at 5 x 10⁷ nucleated cells/mL in recommended medium.

Ammonium chloride treatment is NOT recommended when preparing the cells for separation.

Keep the cell suspension at 2 - 8°C until ready to start the cell separation protocol.

WHOLE BLOOD

Prepare a peripheral blood mononuclear cell (PBMC) suspension from whole blood by centrifugation over a density gradient medium (e.g. Lymphoprep™, Catalog #07801). For more rapid PBMC preparation, use the SepMate™ RUO (Catalog #86450/86415) or SepMate™ IVD** (Catalog #85450/85415) cell isolation tube. If platelet removal is desired, centrifuge at 120 x g for 10 minutes with the brake off. Remove the supernatant and resuspend the cells at 5 x 10⁷ nucleated cells/mL in recommended medium.

** SepMate™ IVD is only available in select regions where it is registered as an In Vitro Diagnostic (IVD) device for the isolation of mononuclear cells (MNCs) from whole blood or bone marrow by density gradient centrifugation. In all other regions SepMate™ is available for research use only (RUO).



Recommended Medium

EasySep™ Buffer (Catalog #20144), RoboSep™ Buffer (Catalog #20104), or PBS containing 2% fetal bovine serum (FBS) and 1 mM EDTA. HBSS, Modified (Without Ca⁺⁺ and Mg⁺⁺; Catalog #37250) can be used in place of PBS. Medium should be free of Ca⁺⁺ and Mg⁺⁺.

Directions for Use – Manual EasySep™ Protocols

See page 1 for Sample Preparation and Recommended Medium. Refer to Tables 1 and 2 for detailed instructions regarding the EasySep™ procedure for each magnet.

Table 1. EasySep™ Rat IgM Depletion Kit Protocol

		EASYSEP™ MAGNETS	
STEP	INSTRUCTIONS	 EasySep™ (Catalog #18000)	“The Big Easy” (Catalog #18001) 
1	Prepare sample at the indicated cell concentration within the volume range.	5 x 10 ⁷ cells/mL 0.5 - 2.0 mL	5 x 10 ⁷ cells/mL 1 - 8 mL
	Add sample to required tube.	5 mL (12 x 75 mm) polystyrene round-bottom tube (e.g. Corning Catalog #352058)	14 mL (17 x 100 mm) polystyrene round-bottom tube (e.g. Corning Catalog #352057)
2	Add Depletion Cocktail to sample.	50 µL/mL of sample	50 µL/mL of sample
	OPTIONAL: Add Anti-Rat CD32 Blocker to sample.	5 µL/mL of sample	5 µL/mL of sample
	Mix and incubate.	RT for 10 minutes	RT for 10 minutes
3	Vortex RapidSpheres™. NOTE: Particles should appear evenly dispersed.	30 seconds	30 seconds
4	Add RapidSpheres™ to sample and mix.	25 µL/mL of sample	25 µL/mL of sample
	No incubation needed.	No incubation, IMMEDIATELY move to next step	No incubation, IMMEDIATELY move to next step
5	Add recommended medium to top up the sample to the indicated volume. Mix by gently pipetting up and down 2 - 3 times.	Top up to 2.5 mL	<ul style="list-style-type: none"> • Top up to 5 mL for samples < 2 mL • Top up to 10 mL for samples ≥ 2 mL
	Place the tube (without lid) into the magnet and incubate.	RT for 3 minutes	RT for 3 minutes
6	Pick up the magnet, and in one continuous motion invert the magnet and tube,* pouring the enriched cell suspension into a new tube.	Use new 5 mL tube	Use new 14 mL tube
7	Remove the tube from the magnet and place the new tube (without lid) into the magnet and incubate for a second separation.	RT for 3 minutes	RT for 3 minutes
8	Pick up the magnet, and in one continuous motion invert the magnet and tube,* pouring the enriched cell suspension into a new tube.	Isolated cells are ready for use	Isolated cells are ready for use

RT - room temperature (15 - 25°C)

* Leave the magnet and tube inverted for 2 - 3 seconds, then return upright. Do not shake or blot off any drops that may remain hanging from the mouth of the tube.

Table 2. EasySep™ Rat IgM Depletion Kit Protocol

		EASYSEP™ MAGNETS		
STEP	INSTRUCTIONS	EasyEights™ (Catalog #18103)		Easy 50 (Catalog #18002)
		5 mL tube	14 mL tube	
1	Prepare sample at the indicated cell concentration within the volume range.	0.5 - 2 mL	1 - 8 mL	5 - 25 mL
	Add sample to required tube.	5 mL (12 x 75 mm) polystyrene round-bottom tube (e.g. Corning Catalog #352058)	14 mL (17 x 100 mm) polystyrene round-bottom tube (e.g. Corning Catalog #352057)	50 mL conical tube (e.g. Corning Catalog #352070)
2	Add Depletion Cocktail to sample.	50 µL/mL of sample	50 µL/mL of sample	50 µL/mL of sample
	OPTIONAL: Add Anti-Rat CD32 Blocker to sample.	5 µL/mL of sample	5 µL/mL of sample	5 µL/mL of sample
	Mix and incubate.	RT for 10 minutes	RT for 10 minutes	RT for 10 minutes
3	Vortex RapidSpheres™. NOTE: Particles should appear evenly dispersed.	30 seconds	30 seconds	30 seconds
4	Add RapidSpheres™ to sample.	50 µL/mL of sample	50 µL/mL of sample	50 µL/mL of sample
	Mix and incubate.	No incubation, IMMEDIATELY move to next step	No incubation, IMMEDIATELY move to next step	RT for 5 minutes
5	Add recommended medium to top up the sample to the indicated volume. Mix by gently pipetting up and down 2 - 3 times.	Top up to 2.5 mL	<ul style="list-style-type: none"> • Top up to 5 mL for samples < 2 mL • Top up to 10 mL for samples ≥ 2 mL 	<ul style="list-style-type: none"> • Top up to 25 mL for samples < 10 mL • Top up to 50 mL for samples ≥ 10 mL
	Place the tube (without lid) into the magnet and incubate.	RT for 10 minutes	RT for 10 minutes	RT for 10 minutes
6	Carefully pipette** (do not pour) the enriched cell suspension into a new tube.	Use a new 5 mL tube	Use a new 14 mL tube	Use a new 50 mL tube
7	Remove the tube from the magnet and place the new tube (without lid) into the magnet and incubate for a second separation.	RT for 5 minutes	RT for 5 minutes	RT for 5 minutes
8	Carefully pipette** (do not pour) the enriched cell suspension into a new tube.	Isolated cells are ready for use	Isolated cells are ready for use	Isolated cells are ready for use

RT - room temperature (15 - 25°C)

** Collect the entire supernatant, all at once, into a single pipette (e.g. for the EasyEights™ 5 mL tube use a 2 mL serological pipette and for the EasyEights™ 14 mL tube use a 10 mL serological pipette).

Directions for Use – Fully Automated RoboSep™ Protocol

See page 1 for Sample Preparation and Recommended Medium. Refer to Table 3 for detailed instructions regarding the RoboSep™ procedure.

Table 3. RoboSep™ Rat IgM Depletion Kit Protocol

STEP	INSTRUCTIONS	RoboSep™ (Catalog #20000 and #21000)
1	Prepare sample at the indicated cell concentration within the volume range.	5 x 10 ⁷ cells/mL 1 - 8 mL
	Add sample to required tube.	14 mL (17 x 100 mm) polystyrene round-bottom tube (e.g. Corning Catalog #352057)
2	OPTIONAL: Add Anti-Rat CD32 Blocker to sample.	5 µL/mL of sample
3	Select protocol.	Rat IgM Depletion 18644
4	Vortex RapidSpheres™. NOTE: Particles should appear evenly dispersed.	30 seconds
5	Load the carousel.	Follow on-screen prompts
	Start the protocol.	Press the green "Run" button
6	Unload the carousel when the run is complete.	Isolated cells are ready for use

Notes and Tips

RAT STRAINS

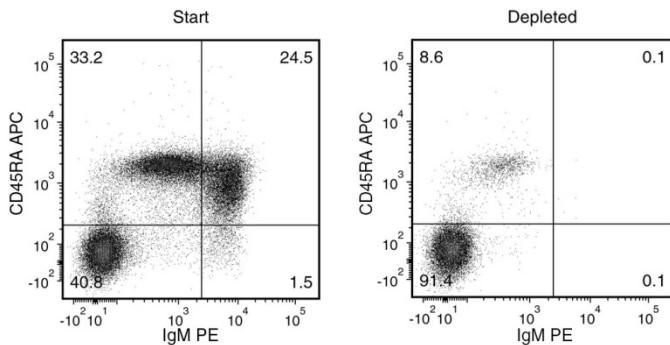
This kit has been tested for use with the Sprague Dawley and Wistar strains and is expected to be also compatible with other strains.

ASSESSING PURITY

For purity assessment of residual IgM+ cells by flow cytometry use the following fluorochrome-conjugated antibodies:

- Anti-rat IgM antibody, and
- Anti-rat CD45RA antibody

Data



Starting with a single-cell suspension of splenocytes from a Sprague Dawley rat, the IgM content of the final isolated fraction is typically 8.0 ± 4.1%. In the above example, the purities of the start and final depleted fractions are 55.7% and 8.7%, respectively (1.6 log depletion).

STEMCELL TECHNOLOGIES INC.'S QUALITY MANAGEMENT SYSTEM IS CERTIFIED TO ISO 13485. PRODUCTS ARE FOR RESEARCH USE ONLY AND NOT INTENDED FOR HUMAN OR ANIMAL DIAGNOSTIC OR THERAPEUTIC USES UNLESS OTHERWISE STATED.

Copyright © 2017 by STEMCELL Technologies Inc. All rights reserved including graphics and images. STEMCELL Technologies & Design, STEMCELL Shield Design, Scientists Helping Scientists, EasyEights, EasySep, RapidSpheres, RoboSep, and SepMate are trademarks of STEMCELL Technologies Canada Inc. Lymphoprep is a trademark of AXIS-SHIELD. All other trademarks are the property of their respective holders. While STEMCELL has made all reasonable efforts to ensure that the information provided by STEMCELL and its suppliers is correct, it makes no warranties or representations as to the accuracy or completeness of such information.