

Antibodies

Anti-Mouse CD150 Antibody, Clone TC15-12F12.2, PE- Cyanine7

Rat monoclonal IgG2a antibody
against mouse CD150 (SLAM), PE-
Cyanine7-conjugated

Catalog #60036CZ
#60036CZ.1

100 µg 0.2 mg/mL
25 µg 0.2 mg/mL



Scientists Helping Scientists™ | WWW.STEMCELL.COM

TOLL FREE PHONE 1 800 667 0322 • PHONE +1 604 877 0713

INFO@STEMCELL.COM • TECHSUPPORT@STEMCELL.COM

FOR GLOBAL CONTACT DETAILS VISIT OUR WEBSITE

Product Description

The TC15-12F12.2 antibody reacts with CD150 (signaling lymphocyte activation molecule or SLAM), an ~75 kDa type I transmembrane glycoprotein that plays multiple roles in the immune response by serving as a cell adhesion molecule and/or coreceptor. It is differentially expressed by T cells, immature thymocytes, B cells, dendritic cells, macrophages and endothelial cells. The expression pattern differs according to cell type and activation status. Expression is rapidly induced upon activation of T cells, B cells and dendritic cells, with synthesis by T cells being maintained on Th1 but not Th2 clones. CD150-mediated co-stimulation of TCR-activated T cells enhances the production of IFN- γ by Th1 cells, a response that can be augmented by binding of the TC15-12F12.2 antibody. CD150 is thought to mediate signal transduction by associating with the intracellular protein tyrosine phosphatase, SHP-2. CD150 also has functions in hematopoietic cell development and is a useful marker for detection of multipotent hematopoietic stem cells (in concert with other markers such as CD48 and CD41). CD150 is not expressed on non-multipotent hematopoietic progenitor cells.

| | |
|----------------------|-------------------------------------------------|
| Target Antigen Name: | CD150 (SLAM) |
| Alternative Names: | IPO-3, Signaling lymphocyte activation molecule |
| Gene ID: | 27218 |
| Species Reactivity: | Mouse |
| Host Species: | Rat (LEW) |
| Clonality: | Monoclonal |
| Clone: | TC15-12F12.2 |
| Isotype: | IgG2a, lambda |
| Immunogen: | Mouse SLAM-human IgG1 fusion protein |
| Conjugate: | PE-Cyanine7 |

Applications

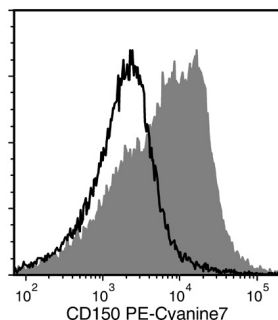
| | |
|-----------|----|
| Verified: | FC |
| Reported: | FC |

Abbreviations: CellSep: Cell separation; ChIP: Chromatin immunoprecipitation; FA: Functional assay; FACS: Fluorescence activated cell sorting; FC: Flow cytometry; ICC: Immunocytochemistry; IF: Immunofluorescence microscopy; IHC: Immunohistochemistry; IP: Immunoprecipitation; RIA: Radioimmunoassay; WB: Western blotting

Properties

| | |
|------------------------|------------------------------------------------------------------------------------------------------------------------------------------------------------------------------------------------------------------------------------|
| Formulation: | Phosphate-buffered solution, pH 7.2, containing 0.09% sodium azide |
| Purification: | The antibody was purified by affinity chromatography, and conjugated with PE-Cyanine7 under optimal conditions. The solution is free of unconjugated PE-Cyanine7 and unconjugated antibody. |
| Stability and Storage: | Product stable at 2 - 8°C when stored undiluted. Do not freeze. Protect product from prolonged exposure to light. For product expiry date, please contact techsupport@stemcell.com . |
| Directions for Use: | For flow cytometry the suggested use of this antibody is $\leq 1 \mu\text{g}$ per 1×10^6 cells in 100 μL volume. It is recommended that the antibody be titrated for optimal performance for each application. |

Data



Flow cytometry analysis of C57BL/6 mouse splenocytes labeled with Anti-Mouse CD150 Antibody, Clone TC15-12F12.2, PE-Cyanine7 (filled histogram) or a rat IgG2a isotype control antibody, PE-Cyanine7 (solid line histogram).

Related Products

For a complete list of antibodies, including other conjugates, sizes and clones, as well as related products available from STEMCELL Technologies, please visit our website at www.stemcell.com/antibodies or contact us at techsupport@stemcell.com.

References

1. Karamitros D et al. (2015) Geminin deletion increases the number of fetal hematopoietic stem cells by affecting the expression of key transcription factors. *Development* 142(1): 70–81. (FC)
2. Gerhardt DM et al. (2014) The Notch1 transcriptional activation domain is required for development and reveals a novel role for Notch1 signaling in fetal hematopoietic stem cells. *Genes Dev* 28(6): 576–93. (FC)
3. Gustafsson K et al. (2013) The Src homology 2 protein Shb promotes cell cycle progression in murine hematopoietic stem cells by regulation of focal adhesion kinase activity. *Exp Cell Res* 319(12): 1852–64.
4. Tober J et al. (2013) Distinct temporal requirements for Runx1 in hematopoietic progenitors and stem cells. *Development* 140(18): 3765–76. (FC)
5. Benz C et al. (2012) Hematopoietic stem cell subtypes expand differentially during development and display distinct lymphopoietic programs. *Cell Stem Cell* 10(3): S1–S14. (FC)
6. Morita Y et al. (2010) Heterogeneity and hierarchy within the most primitive hematopoietic stem cell compartment. *J Exp Med* 207(6): 1173–82.
7. Song J et al. (2010) An in vivo model to study and manipulate the hematopoietic stem cell niche. *Blood* 115(13): 2592–600.
8. Kent DG et al. (2009) Prospective isolation and molecular characterization of hematopoietic stem cells with durable self-renewal potential. *Blood* 113(25): 6342–50.
9. Fraser ST et al. (2007) Maturation and enucleation of primitive erythroblasts during mouse embryogenesis is accompanied by changes in cell-surface antigen expression. *Blood* 109(1): 343–52.
10. Sugiyama T et al. (2007) Conserved markers of fetal pancreatic epithelium permit prospective isolation of islet progenitor cells by FACS. *Proc Natl Acad Sci USA* 104(1): 175–80.
11. Ema H et al. (2006) Adult mouse hematopoietic stem cells: purification and single-cell assays. *Nat Protoc* 1(6): 2979–87.
12. Punnonen J et al. (1997) Soluble and membrane-bound forms of signaling lymphocytic activation molecule (SLAM) induce proliferation and Ig synthesis by activated human B lymphocytes. *J Exp Med* 185(6): 993–1004.
13. Cocks BG et al. (1995) A novel receptor involved in T-cell activation. *Nature* 376(6537): 260–3.

STEMCELL TECHNOLOGIES INC.'S QUALITY MANAGEMENT SYSTEM IS CERTIFIED TO ISO 13485. PRODUCTS ARE FOR RESEARCH USE ONLY AND NOT INTENDED FOR HUMAN OR ANIMAL DIAGNOSTIC OR THERAPEUTIC USES UNLESS OTHERWISE STATED.

Copyright © 2016 by STEMCELL Technologies Inc. All rights reserved including graphics and images. STEMCELL Technologies & Design, STEMCELL Shield Design, Scientists Helping Scientists and StemSpan are trademarks of STEMCELL Technologies Inc. All other trademarks are the property of their respective holders. Alexa Fluor® is a registered trademark of Life Technologies Corporation. This product is licensed for internal research use only and its sale is expressly conditioned on the buyer not using it for manufacturing, performing a service, or medical test, or otherwise generating revenue. For use other than research, contact Life Technologies Corporation, 5791 Van Allen Way, Carlsbad, CA 92008 USA or outlicensing@lifetech.com. While STEMCELL has made all reasonable efforts to ensure that the information provided by STEMCELL and its suppliers is correct, it makes no warranties or representations as to the accuracy or completeness of such information.