

Anti-Mouse CD48 (SLAMF2) Antibody, Clone HM48-1, APC



Scientists Helping Scientists™ | WWW.STEMCELL.COM

TOLL FREE PHONE 1 800 667 0322 • PHONE +1 604 877 0713

INFO@STEMCELL.COM • TECHSUPPORT@STEMCELL.COM

FOR GLOBAL CONTACT DETAILS VISIT OUR WEBSITE

Antibodies

Hamster (Armenian) monoclonal IgG1
antibody against mouse CD48
(SLAMF2), APC-conjugated

Catalog #60162AZ
#60162AZ.1

100 µg 0.2 mg/mL
25 µg 0.2 mg/mL

Product Description

The HM48-1 antibody reacts with mouse CD48, a 45 kDa GPI-anchored glycoprotein and a member of the signaling lymphocyte activation molecule (SLAM) family and Ig superfamily. SLAM family members play a role in multiple aspects of immune function including costimulation, cytotoxicity, and cytokine production. CD48 also plays a role in cell adhesion and T cell activation. In mice, CD48 is thought to be present on nearly all hematopoietic cells except neutrophils and ESLAM cells (CD45+EPCR+CD48-CD150+ hematopoietic stem cells with long-term self-renewal capacity). Ligands for CD48 include CD2 and CD244, binding of which helps to promote interactions between immune cells. HM48-1 is reported to be capable of blocking CD48:CD2 and CD48:CD244 interactions in vitro and in vivo. HM48-1 is also reported to inhibit the proliferative response of spleen cells to mitogens, inhibit CTL activity, and enhance the survival of cardiac allografts.

Target Antigen Name:	CD48 (SLAMF2)
Alternative Names:	B-cell membrane protein, BCM1, Blast, Blast-1, HM48, MEM-102, OX-45 (rat), Sgp-60
Gene ID:	12506
Species Reactivity:	Mouse
Host Species:	Hamster (Armenian)
Clonality:	Monoclonal
Clone:	HM48-1
Isotype:	IgG1, lambda3
Immunogen:	Mouse T lymphoma MBL-2
Conjugate:	APC

Applications

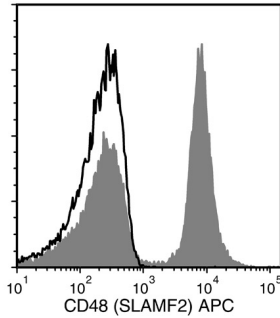
Verified:	FC
Reported:	FC

Abbreviations: CellSep: Cell separation; ChIP: Chromatin immunoprecipitation; FA: Functional assay; FC: Flow cytometry; ICC: Immunocytochemistry; IF: Immunofluorescence microscopy; IHC: Immunohistochemistry; IP: Immunoprecipitation; RIA: Radioimmunoassay; WB: Western blotting

Properties

Formulation:	Phosphate-buffered solution, pH 7.2, containing 0.09% sodium azide
Purification:	The antibody was purified by affinity chromatography, and conjugated with APC under optimal conditions. The solution is free of unconjugated APC and unconjugated antibody.
Stability and Storage:	Product stable at 2 - 8°C when stored undiluted. Do not freeze. Protect product from prolonged exposure to light. For product expiry date, please contact techsupport@stemcell.com .
Directions for Use:	For flow cytometry the suggested use of this antibody is ≤ 0.25 µg per 1×10^6 cells in 100 µL volume. It is recommended that the antibody be titrated for optimal performance for each application.

Data



Flow cytometry analysis of C57BL/6 mouse splenocytes labeled with Anti-Mouse CD48 (SLAMF2) Antibody, Clone HM48-1, APC (filled histogram) or an Armenian hamster IgG isotype control antibody, APC (solid line histogram).

Related Products

For a complete list of antibodies, including other conjugates, sizes and clones, as well as related products available from STEMCELL Technologies, please visit our website at www.stemcell.com/antibodies or contact us at techsupport@stemcell.com.

References

1. Fontinha D et al. (2015) Murid gammaherpesvirus latency-associated protein M2 promotes the formation of conjugates between transformed B lymphoma cells and T helper cells. *PLoS One* 10(11): 1–18. (FC)
2. Schulte R et al. (2015) Index sorting resolves heterogeneous murine hematopoietic stem cell populations. *Exp Hematol* 43(9): 803–11. (FC)
3. Soni C et al. (2015) Distinct and synergistic roles of FcγRIIB deficiency and 129 strain-derived SLAM family proteins in the development of spontaneous germinal centers and autoimmunity. *J Autoimmun* 63: 31–46. (FC)
4. Santos PM et al. (2014) Cell-intrinsic in vivo requirement for the E47-p21 pathway in long-term hematopoietic stem cells. *J Immunol* 192(1): 160–8. (FC)
5. Benz C et al. (2012) Hematopoietic stem cell subtypes expand differentially during development and display distinct lymphopoietic programs. *Cell Stem Cell* 10(3): S1-S14. (FC)
6. Glotzbach JP et al. (2011) An information theoretic, microfluidic-based single cell analysis permits identification of subpopulations among putatively homogeneous stem cells. *PLoS One* 6(6): e21211. (FC)
7. Hazen AL et al. (2009) SHIP is required for a functional hematopoietic stem cell niche. *Blood* 113(13): 2924–33. (FC)
8. Kent DG et al. (2009) Prospective isolation and molecular characterization of hematopoietic stem cells with durable self-renewal potential. *Blood* 113(25): 6342–50.

STEMCELL TECHNOLOGIES INC.'S QUALITY MANAGEMENT SYSTEM IS CERTIFIED TO ISO 13485. PRODUCTS ARE FOR RESEARCH USE ONLY AND NOT INTENDED FOR HUMAN OR ANIMAL DIAGNOSTIC OR THERAPEUTIC USES UNLESS OTHERWISE STATED.

Copyright © 2016 by STEMCELL Technologies Inc. All rights reserved including graphics and images. STEMCELL Technologies & Design, STEMCELL Shield Design, and Scientists Helping Scientists are trademarks of STEMCELL Technologies Inc. All other trademarks are the property of their respective holders. While STEMCELL has made all reasonable efforts to ensure that the information provided by STEMCELL and its suppliers is correct, it makes no warranties or representations as to the accuracy or completeness of such information.