

Antibodies

Anti-Human CD298 Antibody, Clone LNH-94, PE

Mouse monoclonal IgG1 antibody
against human CD298, PE-conjugated

Catalog #60159PE

100 Tests



Scientists Helping Scientists™ | WWW.STEMCELL.COM

TOLL FREE PHONE 1 800 667 0322 • PHONE +1 604 877 0713

INFO@STEMCELL.COM • TECHSUPPORT@STEMCELL.COM

FOR GLOBAL CONTACT DETAILS VISIT OUR WEBSITE

Product Description

The LNH-94 antibody reacts with human CD298, the $\beta 3$ subunit of the Na⁺/K⁺ ATPase. The Na⁺/K⁺ ATPase is a 42 kDa type II transmembrane protein composed of four catalytic α subunits and three smaller glycosylated non-catalytic β subunits. The Na⁺/K⁺ ATPase is important for establishing electrochemical gradients and maintaining normal resting membrane potential by coupling ATP hydrolysis to the active transport of Na⁺ and K⁺. The β subunits have been reported to act as chaperones that stabilize the α subunits and occlude K⁺. CD298 has been used to identify metastatic human cancer cells in mouse xenograft models and has been reported to modulate aspects of immunity, including HIV production, and T cell and B cell activation. CD298 is found on leukocytes, platelets, and most other tissue types.

Target Antigen Name:	CD298
Alternative Names:	ATP1B3, Na ⁺ /K ⁺ ATPase beta3
Gene ID:	483
Species Reactivity:	Human
Host Species:	Mouse
Clonality:	Monoclonal
Clone:	LNH-94
Isotype:	IgG1, kappa
Immunogen:	Not available
Conjugate:	PE

Applications

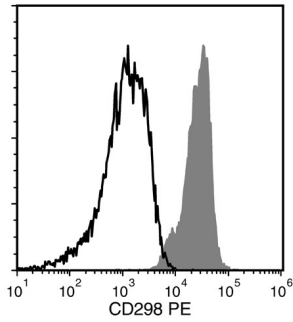
Verified:	FC
Reported:	FC

Abbreviations: CellSep: Cell separation; ChIP: Chromatin immunoprecipitation; FA: Functional assay; FC: Flow cytometry; ICC: Immunocytochemistry; IF: Immunofluorescence microscopy; IHC: Immunohistochemistry; IP: Immunoprecipitation; RIA: Radioimmunoassay; WB: Western blotting

Properties

Formulation:	Phosphate-buffered solution, pH 7.2, containing 0.09% sodium azide and 0.2% (w/v) BSA
Purification:	The antibody was purified by affinity chromatography, and conjugated with PE under optimal conditions. The solution is free of unconjugated PE and unconjugated antibody.
Stability and Storage:	Product stable at 2 - 8°C when stored undiluted. Do not freeze. Protect product from prolonged exposure to light. For product expiry date, please contact techsupport@stemcell.com .
Directions for Use:	For flow cytometry the suggested use of this antibody is 5 μ L per 1 x 10 ⁶ cells in 100 μ L volume. It is recommended that the antibody be titrated for optimal performance for each application.

Data



Flow cytometry analysis of human peripheral blood mononuclear cells (PBMCs; gated on lymphocytes) labeled with Anti-Human CD298 Antibody, Clone LNH-94, PE (filled histogram), or Mouse IgG1, kappa Isotype Control Antibody, Clone MOPC-21, PE (Catalog #60070PE; solid line histogram).

Related Products

For a complete list of antibodies, including other conjugates, sizes and clones, as well as related products available from STEMCELL Technologies, please visit our website at www.stemcell.com/antibodies or contact us at techsupport@stemcell.com.

References

1. Nishitsuji H et al. (2016) ATP1B3 protein modulates the restriction of HIV-1 production and nuclear factor κ light chain enhancer of activated B cells (NF- κ B) activation by BST-2. *J Biol Chem* 291(9): 4754–62.
2. Lawson DA et al. (2015) Single-cell analysis reveals a stem-cell program in human metastatic breast cancer cells. *Nature* 526(7571): 131–5.
3. Chiampanichayakul S et al. (2002) Engagement of Na,K-ATPase beta3 subunit by a specific mAb suppresses T and B lymphocyte activation. *Int Immunol* 14(12): 1407–14.
4. Malik N et al. (1996) Identification of the Mammalian Na,K-ATPase beta 3 subunit. *J Biol Chem* 271(37): 22754–8.
5. Skou JC. (1957) The influence of some cations on an adenosine triphosphatase from peripheral nerves. *Biochim Biophys Acta* 23(2): 394–401.

STEMCELL TECHNOLOGIES INC.'S QUALITY MANAGEMENT SYSTEM IS CERTIFIED TO ISO 13485. PRODUCTS ARE FOR RESEARCH USE ONLY AND NOT INTENDED FOR HUMAN OR ANIMAL DIAGNOSTIC OR THERAPEUTIC USES UNLESS OTHERWISE STATED.

Copyright © 2016 by STEMCELL Technologies Inc. All rights reserved including graphics and images. STEMCELL Technologies & Design, STEMCELL Shield Design, and Scientists Helping Scientists are trademarks of STEMCELL Technologies Inc. All other trademarks are the property of their respective holders. While STEMCELL has made all reasonable efforts to ensure that the information provided by STEMCELL and its suppliers is correct, it makes no warranties or representations as to the accuracy or completeness of such information.