

Anti-Human CD25 Antibody, Clone BC96, Alexa Fluor® 488



Scientists Helping Scientists™ | WWW.STEMCELL.COM

TOLL FREE PHONE 1 800 667 0322 • PHONE +1 604 877 0713

INFO@STEMCELL.COM • TECHSUPPORT@STEMCELL.COM

FOR GLOBAL CONTACT DETAILS VISIT OUR WEBSITE

Antibodies

Mouse monoclonal IgG1 antibody
against human, rhesus, cynomolgus
CD25, Alexa Fluor® 488-conjugated

Catalog #60158AD
#60158AD.1

100 Tests
25 Tests

Product Description

The BC96 antibody reacts with human CD25, a 55 kDa type I integral transmembrane glycoprotein. CD25 is involved in the activation and proliferation of lymphocytes and can be used in the identification of T cell subsets in viral infections like HIV and HTLV. CD25 is present on activated T and B cells, monocytes, macrophages, and regulatory T cells. Expression of CD25, together with CD4 and FOXP3, is considered a phenotypic signature for regulatory T cells. CD25 has a low affinity for its IL-2 ligand but associates with IL-2 receptor β (CD122) and common γ (CD132) chains to form a high affinity IL-2 receptor.

Target Antigen Name:	CD25
Alternative Names:	IL-2 Receptor alpha chain, IL-2Ra, IL2Ra, Tac, p55
Gene ID:	3559
Species Reactivity:	Human, Rhesus, Cynomolgus, Baboon, Chimpanzee, Pig-tailed Macaque
Host Species:	Mouse
Clonality:	Monoclonal
Clone:	BC96
Isotype:	IgG1, kappa
Immunogen:	CD25 protein of human origin
Conjugate:	Alexa Fluor® 488

Applications

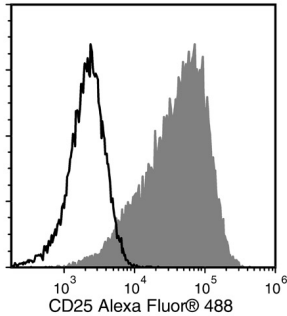
Verified:	FC
Reported:	FC
Special Applications:	This antibody clone has been verified for analyzing CD25 antigen expression on cultured human T cells activated with ImmunoCult™ Human CD3/CD28 T Cell Activator (Catalog #10971) and ImmunoCult™ Human CD3/CD28/CD2 T Cell Activator (Catalog #10970).

Abbreviations: CellSep: Cell separation; ChIP: Chromatin immunoprecipitation; FA: Functional assay; FACS: Fluorescence activated cell sorting; FC: Flow cytometry; ICC: Immunocytochemistry; IF: Immunofluorescence microscopy; IHC: Immunohistochemistry; IP: Immunoprecipitation; RIA: Radioimmunoassay; WB: Western blotting

Properties

Formulation:	Phosphate-buffered solution, pH 7.2, containing 0.09% sodium azide and 0.2% (w/v) BSA
Purification:	The antibody was purified by affinity chromatography, and conjugated with Alexa Fluor® 488 under optimal conditions.
Stability and Storage:	Product stable at 2 - 8°C when stored undiluted. Do not freeze. Protect product from prolonged exposure to light. For product expiry date, please contact techsupport@stemcell.com .
Directions for Use:	For flow cytometry the suggested use of this antibody is 5 μ L per 1×10^6 cells in 100 μ L volume. It is recommended that the antibody be titrated for optimal performance for each application.

Data



Flow cytometry analysis of PHA-L-activated human peripheral blood mononuclear cells (PBMCs) labeled with Anti-Human CD25 Antibody, Clone BC96, Alexa Fluor® 488 (filled histogram), or Mouse IgG1, kappa Isotype Control Antibody, Clone MOPC-21, Alexa Fluor® 488 (Catalog #60070AD; solid line histogram).

Related Products

For a complete list of antibodies, including other conjugates, sizes and clones, as well as related products available from STEMCELL Technologies, please visit our website at www.stemcell.com/antibodies or contact us at techsupport@stemcell.com.

References

1. Legorreta-Haquet MV et al. (2016) Function of Treg cells decreased in patients with systemic lupus erythematosus due to the effect of prolactin. *Medicine* 95(5): e2384. (FC)
2. Fuhrman CA et al. (2015) Divergent phenotypes of human regulatory T cells expressing the receptors TIGIT and CD226. *J Immunol* 195(1): 145–55. (FC)
3. Smigielska-Czepiel K et al. (2013) Dual role of miR-21 in CD4+ T-cells: Activation-induced miR-21 supports survival of memory T-cells and regulates CCR7 expression in naive T-cells. *PLoS One* 8(10): 1–10. (FC)
4. Sugiyama D et al. (2013) Anti-CCR4 mAb selectively depletes effector-type FoxP3+CD4+ regulatory T cells, evoking antitumor immune responses in humans. *Proc Natl Acad Sci USA* 110(44): 17945–50. (FC)
5. Ardolino M et al. (2011) DNAM-1 ligand expression on Ag-stimulated T lymphocytes is mediated by ROS-dependent activation of DNA-damage response: Relevance for NK-T cell interaction. *Blood* 117(18): 4778–86. (FC)
6. Dokouhaki P et al. (2010) Adoptive immunotherapy of cancer using ex vivo expanded human $\gamma\delta$ T cells: A new approach. *Cancer Lett* 297(1): 126–36. (FC)
7. Kmiecik M et al. (2009) Human T cells express CD25 and Foxp3 upon activation and exhibit effector/memory phenotypes without any regulatory/suppressor function. *J Transl Med* 7(1): 89. (FC)
8. Schaeue D et al. (2008) T-cell responses to survivin in cancer patients undergoing radiation therapy. *Clin Cancer Res* 14(15): 4883–90. (FC)

STEMCELL TECHNOLOGIES INC.'S QUALITY MANAGEMENT SYSTEM IS CERTIFIED TO ISO 13485. PRODUCTS ARE FOR RESEARCH USE ONLY AND NOT INTENDED FOR HUMAN OR ANIMAL DIAGNOSTIC OR THERAPEUTIC USES UNLESS OTHERWISE STATED.

Copyright © 2016 by STEMCELL Technologies Inc. All rights reserved including graphics and images. STEMCELL Technologies & Design, STEMCELL Shield Design, Scientists Helping Scientists, and ImmunoCult are trademarks of STEMCELL Technologies Inc. All other trademarks are the property of their respective holders. Alexa Fluor® is a registered trademark of Life Technologies Corporation. This product is licensed for internal research use only and its sale is expressly conditioned on the buyer not using it for manufacturing, performing a service, or medical test, or otherwise generating revenue. For use other than research, contact Life Technologies Corporation, 5791 Van Allen Way, Carlsbad, CA 92008 USA or outlicensing@lifetech.com. While STEMCELL has made all reasonable efforts to ensure that the information provided by STEMCELL and its suppliers is correct, it makes no warranties or representations as to the accuracy or completeness of such information.