

Anti-Human MUC1 (CD227) Antibody, Clone 16A, PE



Scientists Helping Scientists™ | WWW.STEMCELL.COM

TOLL FREE PHONE 1 800 667 0322 • PHONE +1 604 877 0713

INFO@STEMCELL.COM • TECHSUPPORT@STEMCELL.COM

FOR GLOBAL CONTACT DETAILS VISIT OUR WEBSITE

Antibodies

Mouse monoclonal IgG1 antibody
against human MUC1 (CD227), PE-
conjugated

Catalog #60155PE	100 Tests	5 µL/test
#60155PE.1	25 Tests	5 µL/test

Product Description

The 16A antibody reacts with human MUC1, a large (> 250 kDa) heavily glycosylated type 1 transmembrane protein expressed on the surface of most glandular and ductal epithelial cells and a variety of hematopoietic cells. A characteristic feature of the MUC1 glycoprotein is a core domain composed of a variable number of tandem repeats and multiple oligosaccharide side chains. Because the extracellular portion of MUC1 can extend beyond most cell surface proteins, it is thought to play a role in cell-cell and cell-substrate adhesion. The protein is highly expressed by a majority of human adenocarcinomas and is associated with a poor prognosis. In the mammary gland, MUC1 is localized on the apical plasma membrane of luminal epithelial cells. The clone 16A antibody has a higher affinity for the glycosylated form of MUC1.

Target Antigen Name:	MUC1 (CD227)
Alternative Names:	CD227, EMA, Episialin, Epithelial membrane antigen, HMFG antigen, MAM6, Mucin 1, PEM, Polymorphic epithelial mucin
Gene ID:	4582
Species Reactivity:	Human
Host Species:	Mouse (C57BL/6)
Clonality:	Monoclonal
Clone:	16A
Isotype:	IgG1, lambda
Immunogen:	Jurkat cells expressing MUC1
Conjugate:	PE (Phycoerythrin)

Applications

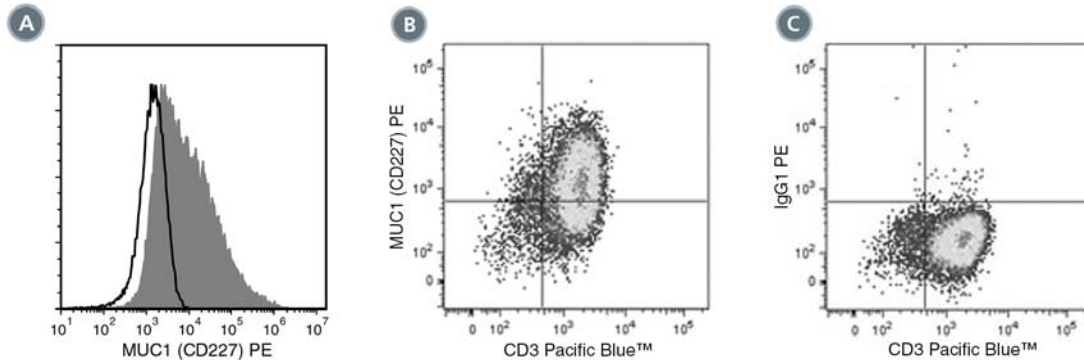
Verified:	FC
Reported:	FC
Special Applications:	This antibody clone has been verified for quantifying airway apical epithelial cells cultured in PneumaCult™-ALI Medium (Catalog #05001) in air-liquid interface cultures.

Abbreviations: CellSep: Cell separation; ChIP: Chromatin immunoprecipitation; FA: Functional assay; FACS: Fluorescence-activated cell sorting; FC: Flow cytometry; ICC: Immunocytochemistry; IF: Immunofluorescence microscopy; IHC: Immunohistochemistry; IP: Immunoprecipitation; RIA: Radioimmunoassay; WB: Western blotting

Properties

Formulation:	Phosphate-buffered solution, pH 7.2, containing 0.09% sodium azide and 0.2% (w/v) bovine serum albumin (BSA)
Purification:	The antibody was purified by affinity chromatography and conjugated with PE under optimal conditions. The solution is free of unconjugated PE and unconjugated antibody.
Stability and Storage:	Product stable at 2 - 8°C when stored undiluted. Do not freeze. Protect product from prolonged exposure to light. For product expiry date, please contact techsupport@stemcell.com.
Directions for Use:	For flow cytometry, the suggested use of this antibody is 5 µL per 1 x 10 ⁶ cells in 100 µL. It is recommended that the antibody be titrated for optimal performance for each application.

Data



(A) Flow cytometry analysis of human airway epithelial cells cultured in PneumaCult™-ALI Medium at the air-liquid interface. Cells were enzymatically dissociated and labeled with Anti-Human MUC1 (CD227) Antibody, Clone 16A, PE (filled histogram) or Mouse IgG1, kappa Isotype Control Antibody, Clone MOPC-21, PE (Catalog #60070PE, solid line histogram).

(C) Flow cytometry analysis human peripheral blood lymphocytes following stimulation with phytohemagglutinin (PHA) for 3 days. Cells were labeled with Anti-Human MUC1 (CD227) Antibody, Clone 16A, PE and anti-human CD3 antibody, clone HIT3a, Pacific Blue™.

(D) Flow cytometry analysis of PHA-activated human peripheral blood lymphocytes following stimulation with PHA for 3 days. Cells were labeled with Mouse IgG1, kappa Isotype Control Antibody, Clone MOPC-21, PE, and anti-human CD3 antibody, clone HIT3a, Pacific Blue™.

Related Products

For a complete list of antibodies, including other conjugates, sizes and clones, as well as related products available from STEMCELL Technologies, visit www.stemcell.com/antibodies or contact us at techsupport@stemcell.com.

References

1. Qu J et al. (2016) Molecular basis of antibody binding to mucin glycopeptides in lung cancer. *Int J Oncol* 48(2): 587–94. (FC)
2. Lee JK et al. (2015) Age and the means of bypassing stasis influence the intrinsic subtype of immortalized human mammary epithelial cells. *Front Cell Dev Biol* 11(3): 13. (FC)
3. Song W et al. (2012) MUC1 glycopeptide epitopes predicted by computational glycomics. *Int J Oncol* 41(6): 1977–84. (ELISA, IHC)
4. O'Connor JC et al. (2005) MUC1 expression in human prostate cancer cell lines and primary tumors. *Prostate Cancer Prostatic Dis* 8(1): 36–44.
5. Jarrard J et al. (1998) MUC1 is a novel marker for the type II pneumocyte lineage during lung carcinogenesis. *Cancer Res* 58(23): 5582–9.

STEMCELL TECHNOLOGIES INC.'S QUALITY MANAGEMENT SYSTEM IS CERTIFIED TO ISO 13485. PRODUCTS ARE FOR RESEARCH USE ONLY AND NOT INTENDED FOR HUMAN OR ANIMAL DIAGNOSTIC OR THERAPEUTIC USES UNLESS OTHERWISE STATED.

Copyright © 2018 by STEMCELL Technologies Inc. All rights reserved including graphics and images. STEMCELL Technologies & Design, STEMCELL Shield Design, Scientists Helping Scientists, and PneumaCult are trademarks of STEMCELL Technologies Canada Inc. Alexa Fluor and Pacific Blue are trademarks of Life Technologies Corporation. All other trademarks are the property of their respective holders. While STEMCELL has made all reasonable efforts to ensure that the information provided by STEMCELL and its suppliers is correct, it makes no warranties or representations as to the accuracy or completeness of such information.