

Anti-Human Epithelial Cell Antibody, Clone 5E11.3.1

Antibodies

Mouse monoclonal IgG1 antibody
against human epithelial cells,
unconjugated



Scientists Helping Scientists™ | WWW.STEMCELL.COM

TOLL FREE PHONE 1 800 667 0322 • PHONE +1 604 877 0713

INFO@STEMCELL.COM • TECHSUPPORT@STEMCELL.COM

FOR GLOBAL CONTACT DETAILS VISIT OUR WEBSITE

Catalog #60147

100 µg 1 mg/mL

Product Description

The 5E11.3.1 antibody reacts with an unidentified marker expressed on the surface of most luminal cells of normal human mammary epithelium. Weak labeling (or no labeling) is observed within the basal cell compartment of the mammary epithelium. The 5E11.3.1 antibody gives variable labeling on malignant breast epithelium. Positive labeling is observed on the following cell lines: MCF7, CAMA, T47D, BT-10, BT-20, COLO 205, and WiDr. Labeling is negative on human bone marrow cells, blood cells, lymphoid and mesenchymal tissues, mammary and marrow fibroblast cultures, and human embryonic stem cell line H9.

Target Antigen Name:	Human epithelial cells
Alternative Names:	Not applicable
Gene ID:	4072
Species Reactivity:	Human
Host Species:	Mouse (BALB/c)
Clonality:	Monoclonal
Clone:	5E11.3.1
Isotype:	IgG1, kappa
Immunogen:	Human mammary carcinoma cell line T47D
Conjugate:	Unconjugated

Applications

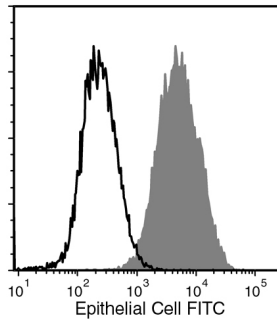
Verified:	FC
Reported:	FC, IF, IHC
Special Applications:	This antibody clone has been verified for purity assessments of cells isolated with EasySep™ kits, including EasySep™ Direct CTC Enrichment Kit (Catalog #19657) and EasySep™ Human EpCAM Positive Selection Kit II (Catalog #17846).

Abbreviations: CellSep: Cell separation; ChIP: Chromatin immunoprecipitation; FA: Functional assay; FACS: Fluorescence-activated cell sorting; FC: Flow cytometry; ICC: Immunocytochemistry; IF: Immunofluorescence microscopy; IHC: Immunohistochemistry; IP: Immunoprecipitation; RIA: Radioimmunoassay; WB: Western blotting

Properties

Formulation:	Phosphate-buffered saline
Purification:	The antibody was purified by affinity chromatography.
Stability and Storage:	Product stable at 2 - 8°C when stored undiluted. Do not freeze. For product expiry date, please contact techsupport@stemcell.com .
Directions for Use:	The suggested use of this antibody is: FC, 0.1 - 0.3 µg per 1 x 10 ⁶ cells in 100 µL; IHC, 1 - 3 µg/mL (a heat-induced antigen retrieval step should be used when working with formalin-fixed paraffin-embedded sections). It is recommended that the antibody be titrated for optimal performance for each application.

Data



Flow cytometry analysis of human MCF7 cells labeled with Anti-Human Epithelial Cell Antibody, Clone 5E11.3.1, followed by Goat Anti-Mouse IgG Antibody, Polyclonal, FITC (Catalog #60138FI) (filled histogram), or Mouse IgG1, kappa Isotype Control Antibody, Clone MOPC-21 (Catalog #60070), followed by Goat Anti-Mouse IgG Antibody, Polyclonal, FITC (solid line histogram).

Related Products

For a complete list of antibodies, including other conjugates, sizes and clones, as well as related products available from STEMCELL Technologies, please visit our website at www.stemcell.com/antibodies or contact us at techsupport@stemcell.com.

References

1. Tornillo G et al. (2018) Dual mechanisms of LYN kinase dysregulation drive aggressive behavior in breast cancer cells. *Cell Rep* 25(13): 3674–3692.e10.(FC)
2. Aupet S et al. (2013) Isolation of viable human hepatic progenitors from adult livers is possible even after 48 hours of cold ischemia. *Tissue Eng Part C Methods* 19(7): 497–506. (FC)
3. Kryczek I et al. (2009) Phenotype, distribution, generation, and functional and clinical relevance of Th17 cells in the human tumor environments. *Blood* 114(6): 1141–9. (FC, IF, IHC)
4. Bardy P et al. (1997) Isolation and analysis of different subpopulations of normal human breast epithelial cells after their infection with a retroviral vector encoding a cell surface marker. *Breast Cancer Res Treat* 44(2): 153–65. (FACS, FC)

STEMCELL TECHNOLOGIES INC.'S QUALITY MANAGEMENT SYSTEM IS CERTIFIED TO ISO 13485. PRODUCTS ARE FOR RESEARCH USE ONLY AND NOT INTENDED FOR HUMAN OR ANIMAL DIAGNOSTIC OR THERAPEUTIC USES UNLESS OTHERWISE STATED.

Copyright © 2019 by STEMCELL Technologies Inc. All rights reserved including graphics and images. STEMCELL Technologies & Design, STEMCELL Shield Design, and Scientists Helping Scientists are trademarks of STEMCELL Technologies Canada Inc. All other trademarks are the property of their respective holders. While STEMCELL has made all reasonable efforts to ensure that the information provided by STEMCELL and its suppliers is correct, it makes no warranties or representations as to the accuracy or completeness of such information.