

Anti-Human CD326 (EpCAM) Antibody, Clone VU-1D9, FITC



Scientists Helping Scientists™ | WWW.STEMCELL.COM

TOLL FREE PHONE 1 800 667 0322 • PHONE +1 604 877 0713

INFO@STEMCELL.COM • TECHSUPPORT@STEMCELL.COM

FOR GLOBAL CONTACT DETAILS VISIT OUR WEBSITE

Antibodies

Mouse monoclonal IgG1 antibody
against human CD326 (EpCAM), FITC-
conjugated

Catalog #60136FI

100 Tests 20 µL/test

Product Description

The VU-1D9 antibody reacts with the human epithelial cell adhesion molecule (EpCAM or CD326), an ~40 kDa type I transmembrane glycoprotein, which functions as a homophilic and Ca⁺⁺-independent adhesion molecule. Binding of the VU-1D9 antibody requires the presence of the extracellular EGF-1 domain of EpCAM. EpCAM has roles in several cellular processes, including signaling, migration, proliferation, and differentiation. It is expressed early during erythropoiesis and has been identified as a stem cell marker. The EpCAM protein is found on the basolateral membrane of most normal epithelial cells and is highly expressed in bone marrow, colon, and lung. EpCAM is not expressed on mesothelial cells or mesotheliomas, and so is widely used as a diagnostic marker to distinguish mesothelioma and carcinoma cells, as well as serving as a target for immunotherapeutic treatment of carcinomas. The VU-1D9 antibody has been used to identify and isolate circulating tumor cells.

Target Antigen Name:	CD326 (EpCAM)
Alternative Names:	EGP2, EpCAM, Epithelial cell adhesion molecule, ESA, TACSTD1, TROP-1
Gene ID:	4072
Species Reactivity:	Human
Host Species:	Mouse (BALB/c)
Clonality:	Monoclonal
Clone:	VU-1D9
Isotype:	IgG1, kappa
Immunogen:	Human small cell lung carcinoma cell line NCI-H69
Conjugate:	FITC (Fluorescein isothiocyanate)

Applications

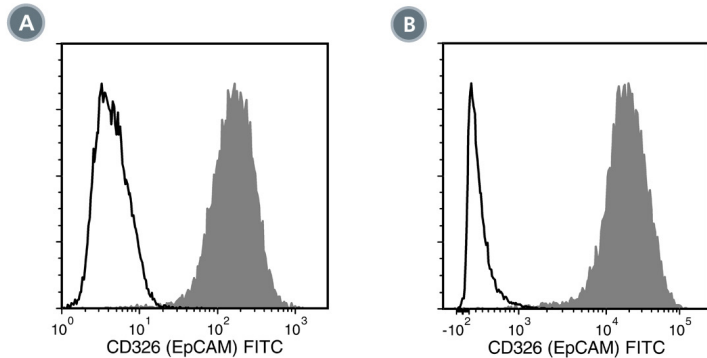
Verified:	FC
Reported:	FC

Abbreviations: CellSep: Cell separation; ChIP: Chromatin immunoprecipitation; FA: Functional assay; FACS: Fluorescence-activated cell sorting; FC: Flow cytometry; ICC: Immunocytochemistry; IF: Immunofluorescence microscopy; IHC: Immunohistochemistry; IP: Immunoprecipitation; RIA: Radioimmunoassay; WB: Western blotting

Properties

Formulation:	Phosphate-buffered saline containing 0.1% bovine serum albumin and < 0.1% sodium azide
Purification:	The antibody was purified by affinity chromatography.
Stability and Storage:	Product stable at 2 - 8°C when stored undiluted. Do not freeze. Protect product from prolonged exposure to light. For product expiry date, please contact techsupport@stemcell.com .
Directions for Use:	For flow cytometry, the suggested use of this antibody is 20 µL per 1 x 10 ⁶ cells in 100 µL. The antibody also works well on paraffin sections; however, a heat-induced antigen retrieval protocol is required for optimal staining of formalin-fixed paraffin-embedded tissues. It is recommended that the antibody be titrated for optimal performance for each application.

Data



(A) Flow cytometry analysis of human embryonic stem (ES) cells labeled with Anti-Human CD326 (EpCAM) Antibody, Clone VU-1D9, FITC (filled histogram) or a mouse IgG1, kappa FITC isotype control antibody (solid line histogram).

(B) Flow cytometry analysis of human MCF7 cells labeled with Anti-Human CD326 (EpCAM) Antibody, Clone VU-1D9, FITC (filled histogram) or Mouse IgG1, kappa Isotype Control Antibody, Clone MOPC-21, FITC (Catalog #60070FI) (solid line histogram).

Related Products

For a complete list of antibodies, including other conjugates, sizes and clones, as well as related products available from STEMCELL Technologies, please visit our website at www.stemcell.com/antibodies or contact us at techsupport@stemcell.com.

References

1. de Albuquerque A et al. (2012) Multimarker analysis of circulating tumor cells in peripheral blood of metastatic breast cancer patients: A step forward in personalized medicine. *Breast Care (Basel)* 7(1): 7–12. (CellSep)
2. Khan MS et al. (2011) Circulating tumor cells and EpCAM expression in neuroendocrine tumors. *Clin Cancer Res* 17(2): 337–45. (IHC)
3. Spizzo G et al. (2011) EpCAM expression in primary tumour tissues and metastases: an immunohistochemical analysis. *J Clin Pathol* 64(5): 415–20. (IHC)
4. Yoon S-M et al. (2011) Epithelial cell adhesion molecule (EpCAM) marks hepatocytes newly derived from stem/progenitor cells in humans. *Hepatology* 53(3): 964–73. (IHC)
5. Sundberg M et al. (2009) CD marker expression profiles of human embryonic stem cells and their neural derivatives, determined using flow-cytometric analysis, reveal a novel CD marker for exclusion of pluripotent stem cells. *Stem Cell Res* 2(2): 113–24.
6. Koga Y et al. (2008) Improved recovery of exfoliated colonocytes from feces using newly developed immunomagnetic beads. *Gastroenterol Res Pract* 2008: 605273. (CellSep)
7. Gudjonsson T et al. (2002) Isolation, immortalization, and characterization of a human breast epithelial cell line with stem cell properties. *Genes Dev* 16(6): 693–706. (FC, IF, IHC)
8. Balzar M et al. (2001) Epidermal growth factor-like repeats mediate lateral and reciprocal interactions of Ep-CAM molecules in homophilic adhesions. *Mol Cell Biol* 21(7): 2570–80. (Epitope mapping)
9. Stingl J et al. (2001) Characterization of bipotent mammary epithelial progenitor cells in normal adult human breast tissue. *Breast Cancer Res Treat* 67(2): 93–109. (FC)

STEMCELL TECHNOLOGIES INC.'S QUALITY MANAGEMENT SYSTEM IS CERTIFIED TO ISO 13485. PRODUCTS ARE FOR RESEARCH USE ONLY AND NOT INTENDED FOR HUMAN OR ANIMAL DIAGNOSTIC OR THERAPEUTIC USES UNLESS OTHERWISE STATED.

Copyright © 2018 by STEMCELL Technologies Inc. All rights reserved including graphics and images. STEMCELL Technologies & Design, STEMCELL Shield Design, and Scientists Helping Scientists are trademarks of STEMCELL Technologies Canada Inc. All other trademarks are the property of their respective holders. While STEMCELL has made all reasonable efforts to ensure that the information provided by STEMCELL and its suppliers is correct, it makes no warranties or representations as to the accuracy or completeness of such information.