

Anti-Human CD33 Antibody, Clone P67.6, PE



Scientists Helping Scientists™ | WWW.STEMCELL.COM

TOLL FREE PHONE 1 800 667 0322 • PHONE +1 604 877 0713

INFO@STEMCELL.COM • TECHSUPPORT@STEMCELL.COM

FOR GLOBAL CONTACT DETAILS VISIT OUR WEBSITE

Antibodies

Mouse monoclonal IgG1 antibody
against human CD33, PE-conjugated

Catalog #60126PE	100 Tests	5 µL/test
#60126PE.1	25 Tests	5 µL/test

Product Description

The P67.6 antibody reacts with CD33 (Siglec-3), a 67 kDa type 1 transmembrane sialoadhesin protein of the immunoglobulin superfamily. CD33 is expressed on committed myeloid progenitor cells, monocytes, granulocytes, dendritic cells, mast cells, resident macrophages, subsets of B cells, and activated T and NK cells. CD33 is a major marker used to differentiate myeloid from lymphoid or erythroid leukemias. In peripheral blood, it is expressed at high levels on monocytes and at lower levels on granulocytes. CD33 functions as a sialic acid-dependent cell adhesion molecule and mediates protein-glycan and protein-protein interactions between cells. It also has a putative role as an inhibitory receptor during the immune response.

Target Antigen Name:	CD33
Alternative Names:	gp67, p67, Sialic acid binding Ig-like lectin 3, Siglec-3
Gene ID:	945
Species Reactivity:	Human
Host Species:	Mouse (BALB/c)
Clonality:	Monoclonal
Clone:	P67.6
Isotype:	IgG1, kappa
Immunogen:	FMY9S5 cells expressing CD33 gene
Conjugate:	PE (Phycoerythrin)

Applications

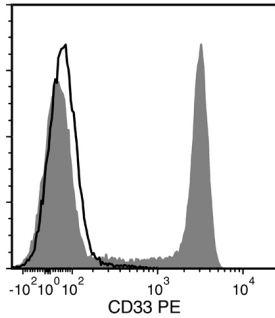
Verified:	FC
Reported:	FC

Abbreviations: CellSep: Cell separation; ChIP: Chromatin immunoprecipitation; FA: Functional assay; FACS: Fluorescence-activated cell sorting; FC: Flow cytometry; ICC: Immunocytochemistry; IF: Immunofluorescence microscopy; IHC: Immunohistochemistry; IP: Immunoprecipitation; RIA: Radioimmunoassay; WB: Western blotting

Properties

Formulation:	Phosphate-buffered solution, pH 7.2, containing 0.09% sodium azide and 0.2% (w/v) bovine serum albumin
Purification:	The antibody was purified by affinity chromatography and conjugated with PE under optimal conditions. The solution is free of unconjugated PE and unconjugated antibody.
Stability and Storage:	Product stable at 2 - 8°C when stored undiluted. Do not freeze. Protect product from prolonged exposure to light. For product expiry date, please contact techsupport@stemcell.com .
Directions for Use:	For flow cytometry the suggested use of this antibody is 5 µL per 1 x 10 ⁶ cells in 100 µL or per 100 µL of whole blood. It is recommended that the antibody be titrated for optimal performance for each application.

Data



Flow cytometry analysis of human peripheral blood mononuclear cells (PBMCs) labeled with Anti-Human CD33 Antibody, Clone P67.6, PE (filled histogram) or Mouse IgG1, kappa Isotype Control Antibody, Clone MOPC-21, PE (Catalog #60070PE) (solid line histogram).

Related Products

For a complete list of antibodies, including other conjugates, sizes and clones, as well as related products available from STEMCELL Technologies, please visit our website at www.stemcell.com/antibodies or contact us at techsupport@stemcell.com.

References

1. Alhan C et al. (2014) Absence of aberrant myeloid progenitors by flow cytometry is associated with favorable response to azacitidine in higher risk myelodysplastic syndromes. *Cytometry B Clin Cytom* 86(B): 207–15. (FC)
2. Beliakova-Bethell N et al. (2014) The effect of cell subset isolation method on gene expression in leukocytes. *Cytometry A* 85(1): 94–104. (FC)
3. Srinivasan A et al. (2014) Phase I study of the safety and pharmacokinetics of Plerixafor in children undergoing a second allogeneic hematopoietic stem cell transplantation for relapsed or refractory leukemia. *Biol Blood Marrow Transplant* 20(8): 1224–8. (FC)
4. Thiesen S et al. (2014) CD14(hi)HLA-DR(dim) macrophages, with a resemblance to classical blood monocytes, dominate inflamed mucosa in Crohn's disease. *J Leukoc Biol* 95(3): 531–41. (FC)
5. Garand R et al. (2013) Flow cytometry and IG/TCR quantitative PCR for minimal residual disease quantitation in acute lymphoblastic leukemia: A French multicenter prospective study on behalf of the FRALLE, EORTC and GRAALL. *Leukemia* 27(2): 370–6. (FC)

STEMCELL TECHNOLOGIES INC.'S QUALITY MANAGEMENT SYSTEM IS CERTIFIED TO ISO 13485. PRODUCTS ARE FOR RESEARCH USE ONLY AND NOT INTENDED FOR HUMAN OR ANIMAL DIAGNOSTIC OR THERAPEUTIC USES UNLESS OTHERWISE STATED.

Copyright © 2018 by STEMCELL Technologies Inc. All rights reserved including graphics and images. STEMCELL Technologies & Design, STEMCELL Shield Design, and Scientists Helping Scientists are trademarks of STEMCELL Technologies Canada Inc. All other trademarks are the property of their respective holders. While STEMCELL has made all reasonable efforts to ensure that the information provided by STEMCELL and its suppliers is correct, it makes no warranties or representations as to the accuracy or completeness of such information.