

## Anti-Human CD138 Antibody, Clone DL-101, Unconjugated



Scientists Helping Scientists™ | [WWW.STEMCELL.COM](http://WWW.STEMCELL.COM)

TOLL FREE PHONE 1 800 667 0322 • PHONE +1 604 877 0713

[INFO@STEMCELL.COM](mailto:INFO@STEMCELL.COM) • [TECHSUPPORT@STEMCELL.COM](mailto:TECHSUPPORT@STEMCELL.COM)

FOR GLOBAL CONTACT DETAILS VISIT OUR WEBSITE

## Antibodies

Mouse monoclonal IgG1 antibody  
against human CD138 (syndecan-1), PE-  
conjugated

Catalog #60003PE

100 tests

5 µL/test

FOR RESEARCH USE ONLY. NOT INTENDED FOR HUMAN OR ANIMAL DIAGNOSTIC OR THERAPEUTIC USES.

## Product Description

The DL-101 antibody reacts with an extracellular epitope on CD138 (Syndecan-1), an ~85 - 95 kDa type 1 transmembrane glycoprotein expressed on the surface of pre-B cells, immature B cells, and normal and malignant plasma cells (but not mature circulating B cells), as well as on non-hematopoietic cells such as embryonic mesenchymal cells, endothelial, epithelial and neural cells. CD138 expression is used as a diagnostic marker for several types of tumors. CD138 is thought to act primarily as a receptor which modulates cell proliferation, cell migration and cell-matrix associations by linking the extracellular matrix to the cytoskeleton. Heparin sulfate and chondroitin sulfate moieties attached to CD138 associate with several proteins, including collagens, fibronectin, tenascin, thrombospondin and certain cytokines. The DL-101 antibody recognizes a different epitope than anti-CD138 antibody clones MI15 and B-B4.

Target Antigen Name:	CD138 (Syndecan-1)
Alternative Names:	B-B4, SDC1, syndecan-1
Gene ID:	6382
Species Reactivity:	Human
Host Species:	Mouse
Clonality:	Monoclonal
Clone:	DL-101
Isotype:	IgG1, kappa
Immunogen:	Human CD138 (Syndecan-1)
Conjugate:	PE

## Applications

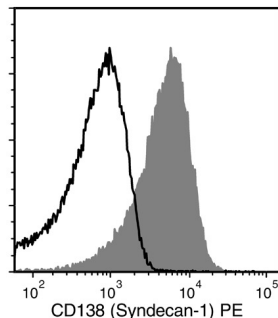
Verified:	FC
Reported:	FC

Abbreviations: CellSep: Cell separation; ChIP: Chromatin immunoprecipitation; FA: Functional assay; FC: Flow cytometry; ICC: Immunocytochemistry; IF: Immunofluorescence microscopy; IHC: Immunohistochemistry; IP: Immunoprecipitation; RIA: Radioimmunoassay; WB: Western blotting

## Properties

Formulation:	Phosphate-buffered solution, pH 7.2, containing 0.09% sodium azide and 0.2% (w/v) bovine serum albumin
Purification:	The antibody was purified by affinity chromatography and conjugated with PE under optimal conditions. The solution is free of unconjugated PE and unconjugated antibody.
Stability and Storage:	Product stable at 2 - 8°C when stored undiluted. Do not freeze. Protect product from prolonged exposure to light. For product expiry date, please contact <a href="mailto:techsupport@stemcell.com">techsupport@stemcell.com</a> .
Directions for Use:	For flow cytometry the suggested use of this antibody is 5 µL per 1 x 10 <sup>6</sup> cells in 100 µL volume or per 100 µL of whole blood. It is recommended that the antibody be titrated for optimal performance for each application.

## Data



Flow cytometry analysis of human U266 myeloma cells labeled with Anti-Human CD138 (Syndecan-1) Antibody, Clone DL-101, PE (filled histogram) or a mouse IgG1, kappa PE isotype control antibody (open histogram).

## Related Products

For a complete list of antibodies, including other conjugates, sizes and clones, as well as related products available from STEMCELL Technologies, please visit our website at [www.stemcell.com/antibodies](http://www.stemcell.com/antibodies) or contact us at [techsupport@stemcell.com](mailto:techsupport@stemcell.com).

## References

1. Wijdenes J, et al. BC29: CD138 (syndecan-1) workshop panel report. In: Kishimoto T, et al., Eds. Leukocyte Typing VI: White cell differentiation antigens. Garland Publishing Inc., New York, pp. 249-52, 1997 (FC)
2. Costes V, et al. The Mi15 monoclonal antibody (anti-syndecan-1) is a reliable marker for quantifying plasma cells in paraffin-embedded bone marrow biopsy specimens. *Hum Pathol* 30(12): 1405-11, 1999 (IHC)
3. Gattei V, et al. Characterization of anti-CD138 monoclonal antibodies as tools for investigating the molecular polymorphism of syndecan-1 in human lymphoma cells. *Br J Haematol* 104(1): 152-62, 1999 (FC, WB)
4. Colomo L, et al. Clinical impact of the differentiation profile assessed by immunophenotyping in patients with diffuse large B-cell lymphoma. *Blood* 101: 78-84, 2003 (IHC)
5. Seftalioglu A, Karakus S. Syndecan-1/CD138 expression in normal myeloid, acute lymphoblastic and myeloblastic leukemia cells. *Acta Histochem* 105(3): 213-21, 2003 (IHC/Electron Microscopy)
6. Götte M, et al. An expression signature of syndecan1 (CD138), E-cadherin and c-met is associated with factors of angiogenesis and lymphangiogenesis in ductal breast carcinoma in situ. *Breast Cancer Res* 9(1): R8, 2007 (ICC, IF, IHC)
7. Bologna-Molina R, et al. Syndecan-1 (CD138) and Ki-67 expression in different subtypes of ameloblastomas. *Oral Oncol* 44(8): 805-11, 2008 (IHC)
8. Beauvais DM, et al. Syndecan-1 regulates alphavbeta3 and alphavbeta5 integrin activation during angiogenesis and is blocked by synstatin, a novel peptide inhibitor. *J Exp Med* 206(3): 691-705, 2009 (FC, IF, IHC, IP)
9. Erikson E, et al. In vivo expression profile of the antiviral restriction factor and tumor-targeting antigen CD317/BST-2/HM1.24/tetherin in humans. *Proc Natl Acad Sci USA* 108(33): 13688-93, 2011 (FC, IF, IHC)
10. Kawano Y, et al. Hypoxia reduces CD138 expression and induces an immature and stem cell-like transcriptional program in myeloma cells. *Int J Oncol* 43(6): 1809-16, 2013 (FC)

STEMCELL TECHNOLOGIES INC.'S QUALITY MANAGEMENT SYSTEM IS CERTIFIED TO ISO 13485 MEDICAL DEVICE STANDARDS.

Copyright © 2015 by STEMCELL Technologies Inc. All rights reserved including graphics and images. STEMCELL Technologies & Design, STEMCELL Shield Design and Scientists Helping Scientists are trademarks of STEMCELL Technologies Inc. While STEMCELL has made all reasonable efforts to ensure that the information provided by STEMCELL and its suppliers is correct, it makes no warranties or representations as to the accuracy or completeness of such information.