

Antibodies

Rat IgM, kappa Isotype Control Antibody, Clone RTK2118

Rat monoclonal IgM, kappa isotype
control antibody, unconjugated

Catalog #60074
#60074.1

500 µg 0.5 mg/mL
50 µg 0.5 mg/mL



Scientists Helping Scientists™ | WWW.STEMCELL.COM

TOLL FREE PHONE 1 800 667 0322 • PHONE +1 604 877 0713

INFO@STEMCELL.COM • TECHSUPPORT@STEMCELL.COM

FOR GLOBAL CONTACT DETAILS VISIT OUR WEBSITE

Product Description

The RTK2118 antibody (IgM, kappa) is suitable for use as an isotype-matched control antibody in several applications to estimate the degree of non-specific binding by an antigen-specific antibody. Ideally, the isotype control should have the same subclass of heavy chain (IgA, IgD, IgE, IgG, or IgM) and light chain (kappa or lambda) as the specific antibody being used. If a conjugated antibody is used, an isotype control conjugated to the same molecule (e.g. fluorochrome) should be chosen. The use of an appropriate isotype control helps confirm the specificity of the antigen-specific antibody and indicates non-specific binding that may result from binding to Fc receptors or other cell components. The RTK2118 antibody recognizes keyhole limpet hemocyanin (KLH) and has unknown binding specificity, having been screened on a variety of activated, resting, live, and fixed tissues from several species, including mouse, rat, human, and non-human primates.

Target Antigen Name:	IgM Isotype Control
Alternative Names:	Not applicable
Gene ID:	Not applicable
Species Reactivity:	Not applicable
Host Species:	Rat
Clonality:	Monoclonal
Clone:	RTK2118
Isotype:	IgM, kappa
Immunogen:	Trinitrophenol + KLH
Conjugate:	Unconjugated

Applications

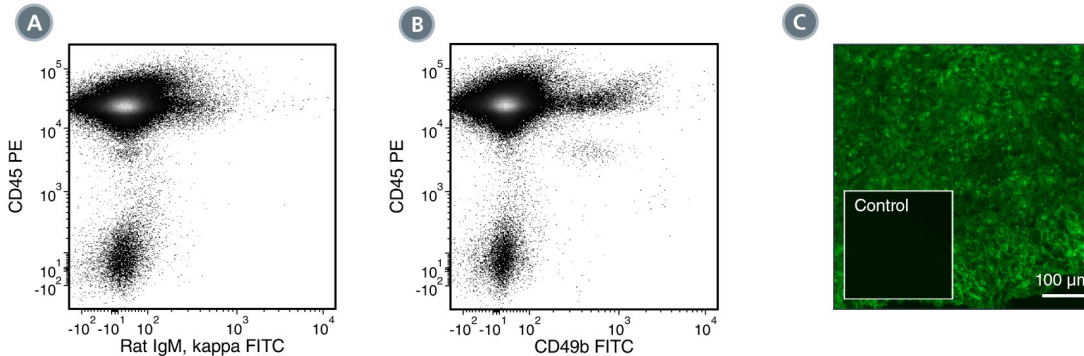
Verified:	FC, ICC, IF
Reported:	FC, ICC, IF, IHC, IP, WB
Special Applications:	This antibody clone has been verified for use as an isotype control antibody for assessing non-specific binding to cells in flow cytometry and immunofluorescence microscopy applications (surface and intracellular staining).

Abbreviations: CellSep: Cell separation; ChIP: Chromatin immunoprecipitation; FA: Functional assay; FACS: Fluorescence-activated cell sorting; FC: Flow cytometry; ICC: Immunocytochemistry; IF: Immunofluorescence microscopy; IHC: Immunohistochemistry; IP: Immunoprecipitation; RIA: Radioimmunoassay; WB: Western blotting

Properties

Formulation:	Phosphate-buffered solution, pH 7.2, containing 0.09% sodium azide
Purification:	This antibody is at > 95% purity.
Stability and Storage:	Product stable at 2 - 8°C when stored undiluted. Do not freeze. For product expiry date, please contact techsupport@stemcell.com.
Directions for Use:	The suggested use of this antibody is at concentrations comparable to those of the specific antibody of interest.

Data



(A) Flow cytometry analysis of C57BL/6 mouse splenocytes labeled with Rat IgM, kappa Isotype Control Antibody, Clone RTK2118, followed by a mouse anti-rat IgM antibody, FITC and Anti-Mouse CD45 Antibody, Clone 30-F11, PE (Catalog #60030PE).

(B) Flow cytometry analysis of C57BL/6 mouse splenocytes labeled with Anti-Mouse CD49b Antibody, Clone DX5 (Catalog #60020), followed by a mouse anti-rat IgM antibody, FITC and Anti-Mouse CD45 Antibody, Clone 30-F11, PE.

(C) Human embryonic stem cells were cultured in mTeSRTM1 (Catalog #85850) on Corning® Matrigel®-coated glass slides, then fixed and labeled with Anti-Mouse SSEA-3 Antibody, Clone MC-631 (Catalog #60061), followed by Goat Anti-Mouse IgG (H+L) Antibody, Polyclonal, FITC (Catalog #60138FI). Inset shows cells labeled with Rat IgM, kappa Isotype Control Antibody, Clone RTK2118 followed by Goat Anti-Mouse IgG (H+L) Antibody, Polyclonal, FITC.

Related Products

For a complete list of antibodies, including other conjugates, sizes and clones, as well as related products available from STEMCELL Technologies, please visit our website at www.stemcell.com/antibodies or contact us at techsupport@stemcell.com.

References

1. Tan AH-M et al. (2014) Aberrant presentation of self-lipids by autoimmune B cells depletes peripheral iNKT cells. *Cell Rep* 9(1): 24–31. (FC)
2. Afek A et al. (2009) Clopidogrel attenuates atheroma formation and induces a stable plaque phenotype in apolipoprotein E knockout mice. *Microvasc Res* 77(3): 364–9. (FC)
3. Kato A et al. (2008) Evidence of a role for B cell-activating factor of the TNF family in the pathogenesis of chronic rhinosinusitis with nasal polyps. *J Allergy Clin Immunol* 121(6): 1385–92, 1392.e1–2. (IHC)
4. Mausner-Fainberg K et al. (2008) The effect of HMG-CoA reductase inhibitors on naturally occurring CD4+CD25+ T cells. *Atherosclerosis* 197(2): 829–39. (FC)
5. Mor A et al. (2007) Role of naturally occurring CD4+ CD25+ regulatory T cells in experimental atherosclerosis. *Arterioscler Thromb Vasc Biol* 27(4): 893–900. (FC)

STEMCELL TECHNOLOGIES INC.'S QUALITY MANAGEMENT SYSTEM IS CERTIFIED TO ISO 13485. PRODUCTS ARE FOR RESEARCH USE ONLY AND NOT INTENDED FOR HUMAN OR ANIMAL DIAGNOSTIC OR THERAPEUTIC USES UNLESS OTHERWISE STATED.

Copyright © 2017 by STEMCELL Technologies Inc. All rights reserved including graphics and images. STEMCELL Technologies & Design, STEMCELL Shield Design, Scientists Helping Scientists, and EasySep are trademarks of STEMCELL Technologies Canada Inc. mTeSR is a trademark of WARF. Corning and Matrigel are registered trademarks of Corning Incorporated. All other trademarks are the property of their respective holders. Alexa Fluor® is a registered trademark of Life Technologies Corporation. Antibodies conjugated to Alexa Fluor® are licensed for internal research use only and sale is expressly conditioned on the buyer not using the antibody for manufacturing, performing a service or medical test, or otherwise generating revenue. For use other than research, contact Life Technologies Corporation, 5791 Van Allen Way, Carlsbad, CA 92008 USA or outlicensing@lifetech.com. While STEMCELL has made all reasonable efforts to ensure that the information provided by STEMCELL and its suppliers is correct, it makes no warranties or representations as to the accuracy or completeness of such information.