

## Anti-Human CD90 Antibody, Clone 5E10, PerCP-Cy5.5



Scientists Helping Scientists™ | [WWW.STEMCELL.COM](http://WWW.STEMCELL.COM)

TOLL FREE PHONE 1 800 667 0322 • PHONE +1 604 877 0713

[INFO@STEMCELL.COM](mailto:INFO@STEMCELL.COM) • [TECHSUPPORT@STEMCELL.COM](mailto:TECHSUPPORT@STEMCELL.COM)

FOR GLOBAL CONTACT DETAILS VISIT OUR WEBSITE

## Antibodies

Mouse monoclonal IgG1 antibody  
against human, rhesus, cynomolgus  
CD90 (Thy-1), PerCP-Cy5.5-conjugated

Catalog #60045PS  
#60045PS.1

100 Tests 5 µL/test  
25 Tests 5 µL/test

## Product Description

The 5E10 antibody reacts with CD90 (Thy-1), a GPI-linked membrane glycoprotein that is N-glycosylated at two sites, giving rise to 25 - 37 kDa molecules. CD90 has roles in signal transduction, cell adhesion and migration, neurite outgrowth, T cell activation, tumor suppression, and inhibition of the proliferation and differentiation of hematopoietic stem cells. It is a known ligand of  $\beta 2$  and  $\beta 3$  integrins and upregulates synthesis of fibronectin, osteonectin, and thrombospondin. CD90 is broadly expressed, being found on human thymocytes, neurons, some glial cells, fibroblasts, activated endothelial cells, some leukemia cell lines, and a distinct subset (< 1%) of CD3+CD4+ T cells in human peripheral blood. CD90 is also expressed by small subsets of CD34+ cells in fetal liver, umbilical cord blood, bone marrow, and mobilized peripheral blood cells. CD90 is considered an important marker for hematopoietic stem and progenitor cells and, in combination with other markers such as CD34, is useful to identify and isolate these cells by FACS.

Target Antigen Name:	CD90 (Thy-1)
Alternative Names:	CDw90, Thy-1, Thy1
Gene ID:	7070
Species Reactivity:	Human, Rhesus, Cynomolgus, Baboon, Pigtailed Macaque, Dog, Pig
Host Species:	Mouse (BALB/c)
Clonality:	Monoclonal
Clone:	5E10
Isotype:	IgG1, kappa
Immunogen:	Human HEL erythroleukemia cell line
Conjugate:	PerCP-Cy5.5

## Applications

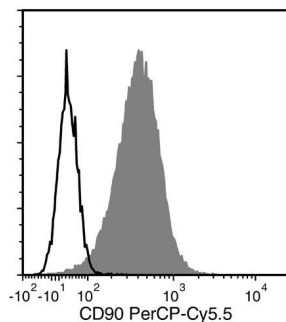
Verified:	FC
Reported:	FC
Special Applications:	This antibody clone has been verified for labeling human mesenchymal cells grown in MesenCult™ Proliferation Kit (Human; Catalog #05411) and MesenCult™-XF Medium (Catalog #05420).

Abbreviations: CellSep: Cell separation; ChIP: Chromatin immunoprecipitation; FA: Functional assay; FACS: Fluorescence-activated cell sorting; FC: Flow cytometry; ICC: Immunocytochemistry; IF: Immunofluorescence microscopy; IHC: Immunohistochemistry; IP: Immunoprecipitation; RIA: Radioimmunoassay; WB: Western blotting

## Properties

Formulation:	Aqueous buffer containing 0.09% sodium azide, may contain carrier protein/stabilizer
Purification:	The antibody was purified by affinity chromatography and conjugated with PerCP-Cy5.5 under optimal conditions.
Stability and Storage:	Product stable at 2 - 8°C when stored undiluted. Do not freeze. Protect product from prolonged exposure to light. For product expiry date, please contact <a href="mailto:techsupport@stemcell.com">techsupport@stemcell.com</a> .
Directions for Use:	For flow cytometry the suggested use of this antibody is $\leq 5 \mu\text{L}$ (0.125 µg) per $1 \times 10^6$ cells in 100 µL. It is recommended that the antibody be titrated for optimal performance for each application.

## Data



Flow cytometry analysis of human erythroleukemia (HEL) cells labeled with Anti-Human CD90 Antibody, Clone 5E10, PerCP-Cy5.5 (filled histogram) or Mouse IgG1, kappa Isotype Control Antibody, Clone MOPC-21, PerCP-Cy5.5 (Catalog # 60070PS) (solid line histogram).

## Related Products

For a complete list of antibodies, including other conjugates, sizes and clones, as well as related products available from STEMCELL Technologies, please visit our website at [www.stemcell.com/antibodies](http://www.stemcell.com/antibodies) or contact us at [techsupport@stemcell.com](mailto:techsupport@stemcell.com).

## References

1. Schinke C et al. (2015) IL8-CXCR2 pathway inhibition as a therapeutic strategy against MDS and AML stem cells. *Blood* 125(20): 3144–52. (FACS)
2. Soler Palacios B et al. (2015) Macrophages from the synovium of active rheumatoid arthritis exhibit an activin A-dependent pro-inflammatory profile. *J Pathol* 235(3): 515–26. (IF, IHC)
3. Park S-J et al. (2014) Interaction of mesenchymal stem cells with fibroblast-like synoviocytes via cadherin-11 promotes angiogenesis by enhanced secretion of placental growth factor. *J Immunol* 192(7): 3003–10. (FC)
4. Touboul C et al. (2013) Mesenchymal stem cells enhance ovarian cancer cell infiltration through IL6 secretion in an amniochorionic membrane based 3D model. *J Transl Med* 11: 28. (FACS, IF)
5. Gundlach CW et al. (2011) Synthesis and evaluation of an anti-MLC1 x anti-CD90 bispecific antibody for targeting and retaining bone-marrow-derived multipotent stromal cells in infarcted myocardium. *Bioconjug Chem* 22(8): 1706–14. (ELISA, FA, FC, WB)
6. Donnenberg VS et al. (2010) Localization of CD44 and CD90 positive cells to the invasive front of breast tumors. *Cytometry B Clin Cytom* 78(5): 287–301. (IF, IHC)
7. Hung JT et al. (2005) Immunopathogenic role of TH1 cells in autoimmune diabetes: evidence from a T1 and T2 doubly transgenic non-obese diabetic mouse model. *J Autoimmun* 25(3):181–92. (IHC, FC)
8. Mason D et al. (Eds.). (2002) *Leukocyte Typing VII: White cell differentiation antigens* (pp. 836). Oxford, UK: Oxford University Press.
9. Murray LJ et al. (1996) CD34+Thy-1+Lin- stem cells from mobilized peripheral blood. *Leuk Lymphoma* 22(1-2): 37–42. (FC)
10. Holden JT et al. (1995) Characterization of Thy-1 (CDw90) expression in CD34+ acute leukemia. *Blood* 86(1): 60–5.
11. Mayani H & Lansdorp PM. (1994) Thy-1 expression is linked to functional properties of primitive hematopoietic progenitor cells from human umbilical cord blood. *Blood* 83(9): 2410–7. (FC)
12. Craig W et al. (1993) Expression of Thy-1 on human hematopoietic progenitor cells. *J Exp Med* 177(5): 1331–42. (FC, IP, WB)

STEMCELL TECHNOLOGIES INC.'S QUALITY MANAGEMENT SYSTEM IS CERTIFIED TO ISO 13485. PRODUCTS ARE FOR RESEARCH USE ONLY AND NOT INTENDED FOR HUMAN OR ANIMAL DIAGNOSTIC OR THERAPEUTIC USES UNLESS OTHERWISE STATED.

Copyright © 2017 by STEMCELL Technologies Inc. All rights reserved including graphics and images. STEMCELL Technologies & Design, STEMCELL Shield Design, Scientists Helping Scientists, and MesenCult are trademarks of STEMCELL Technologies Canada Inc. All other trademarks are the property of their respective holders. While STEMCELL has made all reasonable efforts to ensure that the information provided by STEMCELL and its suppliers is correct, it makes no warranties or representations as to the accuracy or completeness of such information.