

Anti-Human CD20 Antibody, Clone 2H7, PerCP-Cy5.5

Antibodies

Mouse monoclonal IgG2b antibody
against human, rhesus, cynomolgus
CD20, PerCP-Cy5.5-conjugated

Catalog #60008PS

100 tests 5 µL/test



Scientists Helping Scientists™ | WWW.STEMCELL.COM

TOLL FREE PHONE 1 800 667 0322 • PHONE +1 604 877 0713

INFO@STEMCELL.COM • TECHSUPPORT@STEMCELL.COM

FOR GLOBAL CONTACT DETAILS VISIT OUR WEBSITE

FOR RESEARCH USE ONLY. NOT INTENDED FOR HUMAN OR ANIMAL DIAGNOSTIC OR THERAPEUTIC USES.

Product Description

Antibody 2H7 reacts with CD20, an ~35 kDa non-glycosylated type 1 transmembrane protein in the MS4A protein family. The CD20 polypeptide transverses the cell membrane four times, with only a minor portion of the protein displayed on the cell surface. The epitope recognized by antibody 2H7 has been mapped to the amino acid sequence YNCEPANPSEKNSPST, located in the large extracellular loop of CD20. CD20 is expressed on pre-B cells, resting and activated B cells, some follicular dendritic cells, and a subset of T cells. Expression by B cells is lost upon their differentiation into plasma cells. By associating with several proteins, including the B cell receptor (CD79), MHC class I and II, CD53, CD81 and CD82, CD20 is involved in initiating intracellular signaling pathways that modulate the activation, proliferation and differentiation of B cells. It is thought that CD20 forms multi-subunit ion channels which regulate calcium ion flux across the plasma membrane. Activation of CD20 is accompanied by pronounced phosphorylation of the cytoplasmic domain of the ~33 kDa apo-protein, with the appearance of 35 - 37 kDa isoforms which associate with Src family kinases such as Fyn, Lck and Lyn.

| | |
|----------------------|--|
| Target Antigen Name: | CD20 |
| Alternative Names: | B-lymphocyte antigen, B1, Bp35, Leu-16, MS4A1 |
| Gene ID: | 931 |
| Species Reactivity: | Human, Rhesus, Cynomolgus, Baboon, Chimpanzee, Capuchin Monkey, Pigtailed Macaque, Squirrel Monkey |
| Host Species: | Mouse |
| Clonality: | Monoclonal |
| Clone: | 2H7 |
| Isotype: | IgG2b, kappa |
| Immunogen: | Human tonsillar B cells |
| Conjugate: | PerCP-Cy5.5 |

Applications

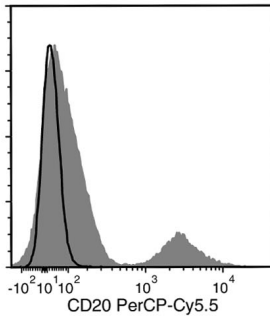
| | |
|-----------------------|---|
| Verified: | FC |
| Reported: | FC |
| Special Applications: | This antibody clone has been verified for purity assessments of cells isolated with EasySep™ kits, including EasySep™ Human Whole Blood CD20 Positive Selection Kit (Catalog #18685), EasySep™ Human CD19 Positive Selection Kit (Catalog #18054) and EasySep™ HLA Whole Blood Lymphoid Positive Selection Kit (Catalog #18684HLA). |

Abbreviations: CellSep: Cell separation; ChIP: Chromatin immunoprecipitation; FA: Functional assay; FC: Flow cytometry; ICC: Immunocytochemistry; IF: Immunofluorescence microscopy; IHC: Immunohistochemistry; IP: Immunoprecipitation; RIA: Radioimmunoassay; WB: Western blotting

Properties

| | |
|------------------------|---|
| Formulation: | Aqueous buffer containing 0.09% sodium azide, may contain carrier protein/stabilizer |
| Purification: | The antibody was purified by affinity chromatography and conjugated with PerCP-Cy5.5 under optimal conditions. |
| Stability and Storage: | Product stable at 2 - 8°C when stored undiluted. Do not freeze. Protect product from prolonged exposure to light. For product expiry date, please contact techsupport@stemcell.com. |
| Directions for Use: | For flow cytometry the suggested use of this antibody is ≤ 5 µL (0.25 µg) per 1 x 10 ⁶ cells in 100 µL volume. It is recommended that the antibody be titrated for optimal performance for each application. |

Data



Flow cytometry analysis of human peripheral blood mononuclear cells (PBMCs) labeled with Anti-Human CD20 Antibody, Clone 2H7, PerCP-Cy5.5 (filled histogram) or a mouse IgG2b, kappa isotype control antibody, PerCP-Cy5.5 (solid line histogram).

Related Products

For a complete list of antibodies, including other conjugates, sizes and clones, as well as related products available from STEMCELL Technologies, please visit our website at www.stemcell.com/antibodies or contact us at techsupport@stemcell.com.

References

1. Liu AY, et al. Production of a mouse-human chimeric monoclonal antibody to CD20 with potent Fc-dependent biologic activity. *J Immunol* 139(10): 3521-26, 1987 (FA)
2. McMichael AJ, et al. Eds. *Leucocyte Typing III: White Cell Differentiation Antigens*. Oxford University Press, New York, pp. 31-62, 1987
3. Hultin LE, et al. CD20 (pan B cell) antigen is expressed at a low level on a subpopulation of human T lymphocytes. *Cytometry* 14(2): 196-204, 1993
4. Tedder TF, et al. CD20: a regulator of cell-cycle progression of B lymphocytes. *Immunol Today* 15(9): 450-54, 1994
5. Szöllösi J, et al. Supramolecular complexes of MHC class I, MHC class II, CD20, and tetraspan molecules (CD53, CD81, and CD82) at the surface of a B cell line JY. *J Immunol* 157(7): 2939-46, 1996
6. Barclay AN, et al. Eds. *The Leukocyte Antigens Facts Book, 2nd Edition, CD20*. Academic Press, NY, pp. 347-48, 1997
7. Kanzaki M, et al. Activation of the calcium-permeable cation channel CD20 expressed in BALB/c 3T3 cells by insulin-like growth factor-1. *J Biol Chem* 272(8): 4964-69, 1997
8. Mason D, et al. Eds. *Leucocyte Typing VII*. Oxford University Press, New York, 2002
9. Cragg MS, et al. Complement-mediated lysis by anti-CD20 mAb correlates with segregation into lipid rafts. *Blood* 101(3): 1045-52, 2003 (FA, FC)
10. Mack CL, et al. Biliary atresia is associated with CD4+ Th1 cell-mediated portal tract inflammation. *Pediatr Res* 56(1): 79-87, 2004 (IHC)
11. Teeling JL, et al. The biological activity of human CD20 monoclonal antibodies is linked to unique epitopes on CD20. *J Immunol* 177(1): 362-71, 2006 (ELISA, FC)
12. Daubenberger CA, et al. Flow cytometric analysis on cross-reactivity of human-specific CD monoclonal antibodies with splenocytes of *Aotus nancymae*, a non-human primate model for biomedical research. *Vet Immunol Immunopathol* 119(1-2): 14-20, 2007 (FC)
13. Du J, et al. Crystal structure of chimeric antibody C2H7 Fab in complex with a CD20 peptide. *Mol Immunol* 45(10): 2861-68, 2008
14. Agrawal SM, et al. Extracellular matrix metalloproteinase inducer shows active perivascular cuffs in multiple sclerosis. *Brain* 136(6): 1760-77, 2013 (ICC, IF)

STEMCELL TECHNOLOGIES INC.'S QUALITY MANAGEMENT SYSTEM IS CERTIFIED TO ISO 13485 MEDICAL DEVICE STANDARDS.

Copyright © 2015 by STEMCELL Technologies Inc. All rights reserved including graphics and images. STEMCELL Technologies & Design, STEMCELL Shield Design, Scientists Helping Scientists and EasySep are trademarks of STEMCELL Technologies Inc. All other trademarks are the property of their respective holders. Alexa Fluor® is a registered trademark of Life Technologies Corporation. This product is licensed for internal research use only and its sale is expressly conditioned on the buyer not using it for manufacturing, performing a service, or medical test, or otherwise generating revenue. For use other than research, contact Life Technologies Corporation, 5791 Van Allen Way, Carlsbad, CA 92008 USA or outlicensing@lifetech.com. While STEMCELL has made all reasonable efforts to ensure that the information provided by STEMCELL and its suppliers is correct, it makes no warranties or representations as to the accuracy or completeness of such information.