

EasySep™ Human CD4+ T Cell Isolation Kit

Negative Selection
Catalog #17952

For processing 1 x 10⁹ cells



Scientists Helping Scientists™ | WWW.STEMCELL.COM

TOLL FREE PHONE 1 800 667 0322 • PHONE +1 604 877 0713
INFO@STEMCELL.COM • TECHSUPPORT@STEMCELL.COM
FOR GLOBAL CONTACT DETAILS VISIT OUR WEBSITE

Document #DX20005 | Version 1_1_0

Description

Isolate untouched and highly purified CD4+ T cells from fresh or previously frozen human peripheral blood mononuclear cells (PBMCs) or washed leukapheresis samples in as little as 8 minutes by immunomagnetic negative selection.

- Fast, easy-to-use and column-free
- Up to 97% purity with high recovery
- Untouched, viable cells

This kit targets non-CD4+ T cells for removal with antibodies recognizing specific cell surface markers. Unwanted cells are labeled with antibodies and magnetic particles, and separated without columns using an EasySep™ magnet. Desired cells are simply poured off into a new tube. Isolated cells are immediately available for downstream applications such as flow cytometry, culture, or DNA/RNA extraction.

Component Descriptions

COMPONENT NAME	COMPONENT #	QUANTITY	STORAGE	SHELF LIFE	FORMAT
EasySep™ Human CD4+ T Cell Isolation Cocktail	17952C	1 x 1 mL	Store at 2 - 8°C. Do not freeze.	Stable until expiry date (EXP) on label.	A combination of monoclonal antibodies in PBS.
EasySep™ Dextran RapidSpheres™ 50103	50103	1 x 1 mL	Store at 2 - 8°C. Do not freeze.	Stable until expiry date (EXP) on label.	A suspension of magnetic particles in water.

PBS - phosphate-buffered saline

Components may be shipped at room temperature (15 - 25°C) but should be stored as indicated above.

Sample Preparation

For available fresh and frozen samples, see www.stemcell.com/primarycells.

PERIPHERAL BLOOD

Prepare a PBMC suspension from whole blood by centrifugation over a density gradient medium (e.g. Lymphoprep™, Catalog #07801). For more rapid PBMC preparation, use the SepMate™ RUO (Catalog #86450/86415) or SepMate™ IVD* (Catalog #85450/85415) cell isolation tube.

If using previously frozen PBMCs, incubate the cells with DNase I Solution (Catalog #07900) at a concentration of 100 µg/mL at room temperature (15 - 25°C) for at least 15 minutes prior to labeling and separation. Filter aggregated suspensions through a 40 µm Cell Strainer (Catalog #27305) for optimal results.

After preparation, resuspend cells at 5 x 10⁷ cells/mL in recommended medium.

* SepMate™ IVD is only available in select regions where it is registered as an In Vitro Diagnostic (IVD) device for the isolation of mononuclear cells (MNCs) from whole blood or bone marrow by density gradient centrifugation. In all other regions SepMate™ is available for research use only (RUO).

LEUKAPHERESIS (LEUKO PAK)

Wash the peripheral blood leukapheresis sample by adding an equivalent volume of recommended medium or PBS with 2% fetal bovine serum (FBS) and centrifuging at 500 x g for 10 minutes at room temperature (15 - 25°C). Remove the supernatant and resuspend the cells at 5 x 10⁷ cells/mL in recommended medium.



Recommended Medium

EasySep™ Buffer (Catalog #20144), RoboSep™ Buffer (Catalog #20104), or PBS containing 2% FBS and 1 mM EDTA. Medium should be free of Ca⁺⁺ and Mg⁺⁺.

Directions for Use – Manual EasySep™ Protocols

See page 1 for Sample Preparation and Recommended Medium. Refer to Tables 1 and 2 for detailed instructions regarding the EasySep™ procedure for each magnet.




Table 1. EasySep™ Human CD4+ T Cell Isolation Kit Protocol

		EASYSEP™ MAGNETS	
STEP	INSTRUCTIONS	 EasySep™ (Catalog #18000)	“The Big Easy” (Catalog #18001) 
1	Prepare sample at the indicated cell concentration within the volume range.	5 x 10 ⁷ cells/mL 0.25 - 2 mL	5 x 10 ⁷ cells/mL 1 - 8.5 mL
	Add sample to required tube.	5 mL (12 x 75 mm) polystyrene round-bottom tube (e.g. Corning Catalog #352058)	14 mL (17 x 100 mm) polystyrene round-bottom tube (e.g. Corning Catalog #352057)
2	Add Isolation Cocktail to sample.	50 µL/mL of sample	50 µL/mL of sample
	Mix and incubate.	RT for 5 minutes	RT for 5 minutes
3	Vortex RapidSpheres™. NOTE: Particles should appear evenly dispersed.	30 seconds	30 seconds
4	Add RapidSpheres™ to sample and mix.	50 µL/mL of sample	50 µL/mL of sample
5	Add recommended medium to top up the sample to the indicated volume. Mix by gently pipetting up and down 2 - 3 times.	Top up to 2.5 mL	<ul style="list-style-type: none"> • Top up to 5 mL for samples ≤ 4 mL • Top up to 10 mL for samples > 4 mL
	Place the tube (without lid) into the magnet and incubate.	RT for 3 minutes	RT for 3 minutes
6	Pick up the magnet, and in one continuous motion invert the magnet and tube,* pouring the enriched cell suspension into a new tube.	Isolated cells are ready for use	Isolated cells are ready for use

RT - room temperature (15 - 25°C)

* Leave the magnet and tube inverted for 2 - 3 seconds, then return upright. Do not shake or blot off any drops that may remain hanging from the mouth of the tube.

Table 2. EasySep™ Human CD4+ T Cell Isolation Kit Protocol

STEP	INSTRUCTIONS	EASYSEP™ MAGNETS			
		 EasyPlate™ (Catalog #18102)	 EasyEights™ (Catalog #18103)		 Easy 50 (Catalog #18002)
			5 mL tube	14 mL tube	
1	Prepare sample at the indicated cell concentration within the volume range.	5 x 10 ⁷ cells/mL 0.1 - 0.2 mL	5 x 10 ⁷ cells/mL 0.5 - 2 mL	5 x 10 ⁷ cells/mL 1 - 8.5 mL	5 x 10 ⁷ cells/mL 10 - 45 mL
	Add sample to required tube (or plate when using the EasySep™ EasyPlate™ Magnet).	Round-bottom, non-tissue culture-treated 96-well plate (e.g. Corning Catalog #3788)	5 mL (12 x 75 mm) polystyrene round-bottom tube (e.g. Corning Catalog #352058)	14 mL (17 x 100 mm) polystyrene round-bottom tube (e.g. Corning Catalog #352057)	50 mL conical tube (e.g. Corning Catalog #352070)
2	Add Isolation Cocktail to sample.	50 µL/mL of sample	50 µL/mL of sample	50 µL/mL of sample	50 µL/mL of sample
	Mix and incubate.	RT for 5 minutes	RT for 5 minutes	RT for 5 minutes	RT for 5 minutes
3	Vortex RapidSpheres™. NOTE: Particles should appear evenly dispersed.	30 seconds	30 seconds	30 seconds	30 seconds
4	Add RapidSpheres™ to sample and mix.	50 µL/mL of sample	50 µL/mL of sample	50 µL/mL of sample	50 µL/mL of sample
5	Add recommended medium to top up sample to the indicated volume. Mix by gently pipetting up and down 2 - 3 times.	Top up to 0.25 mL	Top up to 2.5 mL	<ul style="list-style-type: none"> Top up to 5 mL for samples ≤ 4 mL Top up to 10 mL for samples > 4 mL 	<ul style="list-style-type: none"> Top up to 25 mL for samples ≤ 20 mL Top up to 50 mL for samples > 20 mL
	Place the tube or plate (without lid) into the magnet and incubate.	RT for 5 minutes	RT for 5 minutes	RT for 5 minutes	RT for 10 minutes
6	Carefully pipette** (do not pour) the enriched cell suspension into new tube or plate.	Use a new well in the 96-well plate	Use a new 5 mL tube	Use a new 14 mL tube	Use a new 50 mL tube
7	Remove the tube or plate, containing the isolated cells, from the magnet and place the new tube or plate (without lid) into the magnet and incubate for a second separation.	RT for 5 minutes	RT for 5 minutes	RT for 5 minutes	RT for 5 minutes
8	Carefully pipette** (do not pour) the enriched cell suspension into new tube or plate.	Isolated cells are ready for use	Isolated cells are ready for use	Isolated cells are ready for use	Isolated cells are ready for use


RT - room temperature (15 - 25°C)

** Collect the entire supernatant, all at once, into a single pipette (e.g. for the EasyEights™ 5 mL tube use a 2 mL serological pipette and for the EasyEights™ 14 mL tube use a 10 mL serological pipette).

Directions for Use – Fully Automated RoboSep™ Protocol

See page 1 for Sample Preparation and Recommended Medium. Refer to Table 3 for detailed instructions regarding the RoboSep™ procedure.

Table 3. RoboSep™ Human CD4+ T Cell Isolation Kit Protocol

STEP	INSTRUCTIONS	RoboSep™ (Catalog #20000 and #21000)	
1	Prepare sample at the indicated cell concentration within the volume range.	5 x 10 ⁷ cells/mL 0.25 - 8.5 mL	
	Add sample to required tube.	14 mL (17 x 100 mm) polystyrene round-bottom tube (e.g. Corning Catalog #352057)	
2	Select protocol.	Human CD4+ T Cell Isolation 17952	
3	Vortex RapidSpheres™. NOTE: Particles should appear evenly dispersed.	30 seconds	
4	Load the carousel.	Follow on-screen prompts	
	Start the protocol.	Press the green “Run” button	
5	Unload the carousel when the run is complete. Remove the tube containing the isolated cells.	Isolated cells are ready for use	

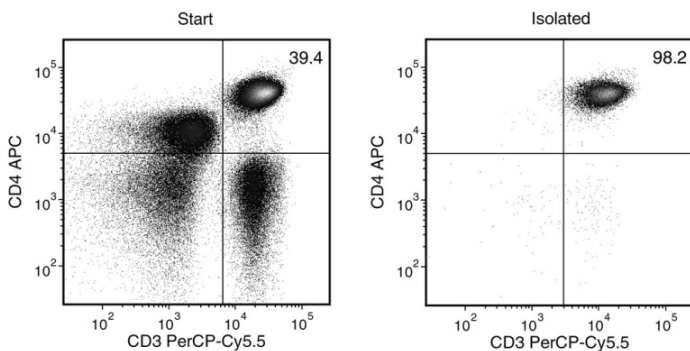
Notes and Tips

ASSESSING PURITY

For purity assessment of CD4+ T cells (CD3+CD4+) by flow cytometry use the following fluorochrome-conjugated antibodies:

- Anti-Human CD3 Antibody, Clone UCHT1 (Catalog #60011), and
- Anti-Human CD4 Antibody, Clone OKT4 (Catalog #60016)

Data



Starting with human PBMCs, the CD4+ T cell content (CD3+CD4+) of the isolated fraction is typically 94.8 ± 2.3% (mean ± SD using the purple EasySep™ Magnet). In the above example, the purities of the start and final isolated fractions are 39.4% and 98.2%, respectively.

STEMCELL TECHNOLOGIES INC.'S QUALITY MANAGEMENT SYSTEM IS CERTIFIED TO ISO 13485. PRODUCTS ARE FOR RESEARCH USE ONLY AND NOT INTENDED FOR HUMAN OR ANIMAL DIAGNOSTIC OR THERAPEUTIC USES UNLESS OTHERWISE STATED.

Copyright © 2016 by STEMCELL Technologies Inc. All rights reserved including graphics and images. STEMCELL Technologies & Design, STEMCELL Shield Design, Scientists Helping Scientists, EasyEights, EasyPlate, EasySep, RapidSpheres, RoboSep, and SepMate are trademarks of STEMCELL Technologies Canada Inc. All other trademarks are the property of their respective holders. While STEMCELL has made all reasonable efforts to ensure that the information provided by STEMCELL and its suppliers is correct, it makes no warranties or representations as to the accuracy or completeness of such information.