

EasySep™ Mouse CD4+ T Cell Isolation Kit

Negative Selection
Catalog #19852

For processing 1 x 10⁹ cells



Scientists Helping Scientists™ | WWW.STEMCELL.COM

TOLL FREE PHONE 1 800 667 0322 • PHONE +1 604 877 0713
INFO@STEMCELL.COM • TECHSUPPORT@STEMCELL.COM
FOR GLOBAL CONTACT DETAILS VISIT OUR WEBSITE

Document #29263 | Version 1_1_3

Description

Isolate untouched and highly purified CD4+ T cells from mouse splenocytes by immunomagnetic negative selection. When using single-cell suspensions from other tissue types, this kit may require optimization.

- Fast and easy-to-use
- Up to 96% purity
- No column required
- Untouched, viable cells

This kit targets non-CD4+ T cells for removal with biotinylated antibodies recognizing specific cell surface markers. Unwanted cells are labeled with biotinylated antibodies and streptavidin-coated magnetic particles, and separated without columns using an EasySep™ magnet. Desired cells are simply poured off into a new tube. Isolated cells are immediately available for downstream applications such as flow cytometry, culture, and cell-based experiments.

Component Descriptions

COMPONENT NAME	COMPONENT #	QUANTITY	STORAGE	SHELF LIFE	FORMAT
EasySep™ Mouse CD4+ T Cell Isolation Cocktail	19852C.1	1 x 0.5 mL	Store at 2 - 8°C. Do not freeze.	Stable until expiry date (EXP) on label.	A combination of monoclonal antibodies in PBS and 0.1% BSA.
EasySep™ Streptavidin RapidSpheres™ 50001	50001	1 x 1 mL	Store at 2 - 8°C. Do not freeze.	Stable until expiry date (EXP) on label.	A suspension of magnetic particles in PBS.
Normal Rat Serum	13551	1 x 2 mL	Store at -20°C.	Stable until expiry date (EXP) on label.	Mycoplasma-free normal rat serum.

BSA - bovine serum albumin; PBS - phosphate-buffered saline

Components may be shipped at room temperature (15 - 25°C) but should be stored as indicated above.

Additional Reagent Stability Information

REAGENT NAME	STORAGE	SHELF LIFE
Normal Rat Serum (in-use)	Store at 2 - 8°C.	Stable for at least 2 months. Do not exceed expiry date (EXP) on label.

Sample Preparation

SPLEEN

Disrupt spleen in PBS or Hanks' Balanced Salt Solution (HBSS) containing 2% fetal bovine serum (FBS). Remove aggregates and debris by passing cell suspension through a 70 µm mesh nylon strainer. Centrifuge at 300 x g for 10 minutes and resuspend at 1 x 10⁸ nucleated cells/mL in recommended medium.

Ammonium chloride treatment is not recommended when preparing the cells for separation.



Recommended Medium

EasySep™ Buffer (Catalog #20144), RoboSep™ Buffer (Catalog #20104), or PBS containing 2% FBS and 1 mM EDTA. HBSS, Modified (Without Ca⁺⁺ and Mg⁺⁺; Catalog #37250) can be used in place of PBS. Medium should be free of Ca⁺⁺, Mg⁺⁺, and biotin.

Directions for Use – Manual EasySep™ Protocols

See page 1 for Sample Preparation and Recommended Medium. Refer to Tables 1 and 2 for detailed instructions regarding the EasySep™ procedure for each magnet.

Table 1. EasySep™ Mouse CD4+ T Cell Isolation Kit Protocol

		EASYSEP™ MAGNETS	
STEP	INSTRUCTIONS	 EasySep™ (Catalog #18000)	 “The Big Easy” (Catalog #18001)
1	Prepare sample at the indicated cell concentration within the volume range.	1 x 10 ⁸ cells/mL 0.25 - 2 mL	1 x 10 ⁸ cells/mL 0.5 - 8 mL
2	Add Rat Serum to sample.	50 µL/mL of sample	50 µL/mL of sample
3	Add sample to required tube.	5 mL (12 x 75 mm) polystyrene round-bottom tube (e.g. Corning Catalog #352058)	14 mL (17 x 100 mm) polystyrene round-bottom tube (e.g. Corning Catalog #352057)
4	Add Isolation Cocktail to sample.	50 µL/mL of sample	50 µL/mL of sample
	Mix and incubate.	RT for 10 minutes	RT for 10 minutes
5	Vortex RapidSpheres™. NOTE: Particles should appear evenly dispersed.	30 seconds	30 seconds
6	Add RapidSpheres™ to sample.	75 µL/mL of sample	75 µL/mL of sample
	Mix and incubate.	RT for 2.5 minutes	RT for 2.5 minutes
7	Add recommended medium to top up the sample to the indicated volume. Mix by gently pipetting up and down 2 - 3 times.	Top up to 2.5 mL	<ul style="list-style-type: none"> • Top up to 5 mL for samples < 4 mL • Top up to 10 mL for samples ≥ 4 mL
	Place the tube (without lid) into the magnet and incubate.	RT for 2.5 minutes	RT for 2.5 minutes
8	Pick up the magnet, and in one continuous motion invert the magnet and tube,* pouring the enriched cell suspension into a new tube.	Isolated cells are ready for use	Isolated cells are ready for use

RT - room temperature (15 - 25°C)

* Leave the magnet and tube inverted for 2 - 3 seconds, then return upright. Do not shake or blot off any drops that may remain hanging from the mouth of the tube.

Table 2. EasySep™ Mouse CD4+ T Cell Isolation Kit Protocol

		EASYSEP™ MAGNETS	
STEP	INSTRUCTIONS	EasyEights™ (Catalog #18103)	
		5 mL tube	14 mL tube
1	Prepare sample at the indicated cell concentration within the volume range.	1 x 10 ⁸ cells/mL 0.25 - 2 mL	1 x 10 ⁸ cells/mL 0.5 - 8 mL
2	Add Rat Serum to sample.	50 µL/mL of sample	50 µL/mL of sample
3	Add sample to required tube.	5 mL (12 x 75 mm) polystyrene round-bottom tube (e.g. Corning Catalog #352058)	14 mL (17 x 100 mm) polystyrene round-bottom tube (e.g. Corning Catalog #352057)
4	Add Isolation Cocktail to sample.	50 µL/mL of sample	50 µL/mL of sample
	Mix and incubate.	RT for 10 minutes	RT for 10 minutes
5	Vortex RapidSpheres™. NOTE: Particles should appear evenly dispersed.	30 seconds	30 seconds
6	Add RapidSpheres™ to sample.	75 µL/mL of sample	75 µL/mL of sample
	Mix and incubate.	RT for 2.5 minutes	RT for 2.5 minutes
7	Add recommended medium to top up the sample to the indicated volume. Mix by gently pipetting up and down 2 - 3 times.	Top up to 2.5 mL	<ul style="list-style-type: none"> • Top up to 5 mL for samples < 4 mL • Top up to 10 mL for samples ≥ 4 mL
	Place the tube (without lid) into the magnet and incubate.	RT for 5 minutes	RT for 5 minutes
8	Carefully pipette (do not pour) the enriched cell suspension** into a new tube.	Isolated cells are ready for use	Isolated cells are ready for use

RT - room temperature (15 - 25°C)

** Collect the entire supernatant, all at once, into a single pipette (e.g. for the EasyEights™ 5 mL tube use a 2 mL serological pipette and for the EasyEights™ 14 mL tube use a 10 mL serological pipette).

Directions for Use – Fully Automated RoboSep™ Protocol

See page 1 for Sample Preparation and Recommended Medium. Refer to Table 3 for detailed instructions regarding the RoboSep™ procedure.

Table 3. RoboSep™ Mouse CD4+ T Cell Isolation Kit Protocol

STEP	INSTRUCTIONS	RoboSep™ (Catalog #20000 and #21000)
1	Prepare sample at the indicated cell concentration within the volume range.	1 x 10 ⁸ cells/mL 0.5 - 8 mL
2	Add Rat Serum to sample.	50 µL/mL of sample
3	Add sample to required tube.	14 mL (17 x 100 mm) polystyrene round-bottom tube (e.g. Corning Catalog #352057)
4	Select protocol.	Mouse CD4+ T Cell Isolation 19852
5	Vortex RapidSpheres™. NOTE: Particles should appear evenly dispersed.	30 seconds
6	Load the carousel.	Follow on-screen prompts
	Start the protocol.	Press the green "Run" button
7	Unload the carousel when the run is complete.	Isolated cells are ready for use

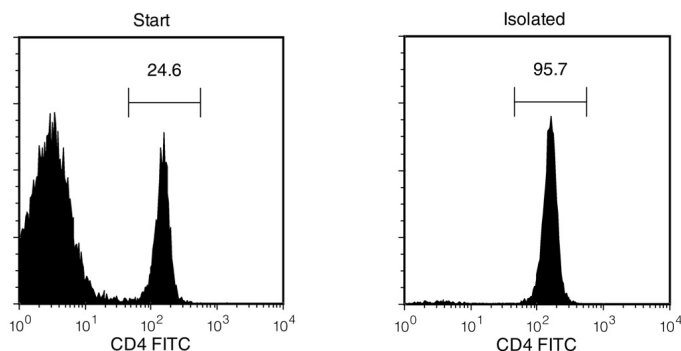
Notes and Tips

ASSESSING PURITY

For purity assessment of CD4+ T cells by flow cytometry use one of the following fluorochrome-conjugated antibody clones:

- Anti-Mouse CD4 Antibody, Clone RM4-4 (Catalog #60029), or
- Anti-Mouse CD4 Antibody, Clone RM4-5 (Catalog #60017)

Data



Starting with mouse splenocytes, the CD4+ T cell content of the isolated fraction typically ranges from 89 - 96%. In the above example, the purities of the start and final isolated fractions are 24.6% and 95.7%, respectively.

STEMCELL TECHNOLOGIES INC.'S QUALITY MANAGEMENT SYSTEM IS CERTIFIED TO ISO 13485. PRODUCTS ARE FOR RESEARCH USE ONLY AND NOT INTENDED FOR HUMAN OR ANIMAL DIAGNOSTIC OR THERAPEUTIC USES UNLESS OTHERWISE STATED.

Copyright © 2017 by STEMCELL Technologies Inc. All rights reserved including graphics and images. STEMCELL Technologies & Design, STEMCELL Shield Design, Scientists Helping Scientists, EasyEights, EasySep, RapidSpheres, and RoboSep are trademarks of STEMCELL Technologies Canada Inc. All other trademarks are the property of their respective holders. While STEMCELL has made all reasonable efforts to ensure that the information provided by STEMCELL and its suppliers is correct, it makes no warranties or representations as to the accuracy or completeness of such information.