



EasySep™ Human Neutrophil Enrichment Kit

Negative Selection
Catalog #19257

For processing 1×10^9 cells



Scientists Helping Scientists™ | WWW.STEMCELL.COM

TOLL FREE PHONE 1 800 667 0322 • PHONE +1 604 877 0713
INFO@STEMCELL.COM • TECHSUPPORT@STEMCELL.COM
FOR GLOBAL CONTACT DETAILS VISIT OUR WEBSITE

Document #29125 | Version 1_1_1

Description

Isolate untouched and highly purified neutrophils from fresh human peripheral blood mononuclear cells by immunomagnetic negative selection.

- Fast, easy-to-use and column-free
- Up to 99% purity
- Untouched, viable cells

This kit targets non-neutrophils for removal with antibodies recognizing specific cell surface markers. Unwanted cells are labeled with antibodies and magnetic particles, and separated without columns using an EasySep™ magnet. Desired cells are simply poured off into a new tube. Isolated cells are immediately available for downstream applications such as flow cytometry, culture or DNA/RNA extraction.

Component Descriptions

COMPONENT NAME	COMPONENT #	QUANTITY	STORAGE	SHELF LIFE	FORMAT
EasySep™ Human Neutrophil Enrichment Cocktail	19257C	1 x 1 mL	Store at 2 - 8°C. Do not freeze.	Stable until expiry date (EXP) on label.	A combination of monoclonal antibodies in PBS.
EasySep™ Magnetic Nanoparticles	19150.1	3 x 1 mL	Store at 2 - 8°C. Do not freeze.	Stable until expiry date (EXP) on label.	A suspension of magnetic particles in water.

PBS - phosphate-buffered saline

Components may be shipped at room temperature (15 - 25°C) but should be stored as indicated above.

Sample Preparation

Important: Do not use dextran sedimentation to prepare cells.

WHOLE BLOOD USING HETASEP™ RED BLOOD CELL (RBC) SEDIMENTATION (preferred for faster, lysis-free sample processing)

1. Collect whole blood in a blood collection tube containing anticoagulant.
2. Add 1 part HetaSep™ (Catalog #07906) to 5 parts whole blood and mix well. Use the minimum sized tube for the total volume of HetaSep™ : blood sample. A 14 mL tube is the maximum size recommended for optimal leukocyte recovery.
3. Centrifuge sample at 110 x g for 6 minutes at room temperature (15 - 25°C) with the brake off.
4. Remove tube from centrifuge and let sit undisturbed (maximum 15 minutes) until the RBC : plasma interface is approximately 40% of the total volume.
5. Harvest the leukocyte-rich plasma (everything above the RBC fraction) into a 50 mL tube and add 4 parts recommended medium to 1 part harvested cells/plasma.
6. Centrifuge at 500 x g for 10 minutes at room temperature with the brake on low.
7. Discard supernatant and wash pellet to remove excess platelets, centrifuging at 120 x g for 10 minutes at room temperature with the brake off.
8. Discard supernatant and resuspend cells at 5×10^7 cells/mL in recommended medium.

WHOLE BLOOD USING RBC LYSIS (preferred for slightly higher purity)

1. Collect whole blood in a blood collection tube containing anticoagulant.
2. Carefully perform a standard density gradient separation (e.g. using Lymphoprep™; Catalog #07801). Do not use SepMate™.
3. Remove and discard the plasma layer, the band of mononuclear cells and the density gradient medium, leaving the RBC pellet intact.
4. Add Ammonium Chloride Solution (Catalog #07800) to the RBC pellet and mix well.
5. Incubate on ice for 10 minutes then centrifuge at 500 x g for 10 minutes with the brake on low.
6. Discard supernatant and wash pellet with cold recommended medium, centrifuging at 120 x g for 10 minutes with the brake off.
7. Discard supernatant and resuspend cells at 5×10^7 cells/mL in recommended medium.



Recommended Medium

EasySep™ Buffer (Catalog #20144), RoboSep™ Buffer (Catalog #20104), or PBS containing 2% fetal bovine serum (FBS) and 1 mM EDTA. Medium should be free of Ca⁺⁺ and Mg⁺⁺.

Directions for Use – Manual EasySep™ Protocols

See page 1 for Sample Preparation and Recommended Medium. Refer to Table 1 for detailed instructions regarding the EasySep™ procedure for each magnet.

Table 1. EasySep™ Human Neutrophil Enrichment Kit Protocol

		EASYSEP™ MAGNETS	
STEP	INSTRUCTIONS	 EasySep™ (Catalog #18000)	 "The Big Easy" (Catalog #18001)
1	Prepare sample at the indicated cell concentration within the volume range.	5 x 10 ⁷ cells/mL 0.5 - 2 mL	5 x 10 ⁷ cells/mL 0.5 - 6.5 mL
	Add sample to required tube.	5 mL (12 x 75 mm) polystyrene round-bottom tube (e.g. Corning Catalog #352058)	14 mL (17 x 100 mm) polystyrene round-bottom tube (e.g. Corning Catalog #352057)
2	Add Selection Cocktail to sample.	50 µL/mL of sample	50 µL/mL of sample
	Mix and incubate.	2 - 8°C for 10 minutes	2 - 8°C for 10 minutes
3	Mix Magnetic Particles.	Pipette up and down more than 5 times	Pipette up and down more than 5 times
4	Add Magnetic Particles to sample.	100 µL/mL of sample	100 µL/mL of sample
	Mix and incubate.	2 - 8°C for 10 minutes	2 - 8°C for 10 minutes
5	Add recommended medium to top up the sample to the indicated volume. Mix by gently pipetting up and down 2 - 3 times.	Top up to 2.5 mL	<ul style="list-style-type: none"> • Top up to 5 mL for samples < 3 mL • Top up to 10 mL for samples ≥ 3 mL
	Place the tube (without lid) into the magnet and incubate.	RT for 5 minutes	RT for 10 minutes
6	Pick up the magnet, and in one continuous motion invert the magnet and tube,* pouring off the enriched cell suspension into a new tube.	Use a new 5 mL tube	Use a new 14 mL tube
7	Remove the tube from the magnet and place the new tube (without lid) into the magnet and incubate for a second separation.	RT for 5 minutes	RT for 10 minutes
8	Pick up the magnet, and in one continuous motion invert the magnet and tube,* pouring the enriched cell suspension into a new tube.	Isolated cells are ready for use	Isolated cells are ready for use


RT - room temperature (15 - 25°C)

* Leave the magnet and tube inverted for 2 - 3 seconds, then return upright. Do not shake or blot off any drops that may remain hanging from the mouth of the tube.

Directions for Use – Fully Automated RoboSep™ Protocol

See page 1 for Sample Preparation and Recommended Medium. Refer to Table 2 for detailed instructions regarding the RoboSep™ procedure.

Table 2. RoboSep™ Human Neutrophil Enrichment Kit Protocol

STEP	INSTRUCTIONS	RoboSep™ (Catalog #20000 and #21000)	
1	Prepare sample at the indicated cell concentration within the volume range.	5 x 10 ⁷ cells/mL 0.5 - 6.5 mL	
	Add sample to required tube.	14 mL (17 x 100 mm) polystyrene round-bottom tube (e.g. Corning Catalog #352057)	
2	Select protocol.	Human Neutrophil Negative Selection 19257-high purity	
3	Mix Magnetic Particles.	Pipette up and down more than 5 times	
4	Load the carousel.	Follow on-screen prompts	
	Start the protocol.	Press the green "Run" button	
5	Unload the carousel when the run is complete.	Isolated cells are ready for use	

Notes and Tips

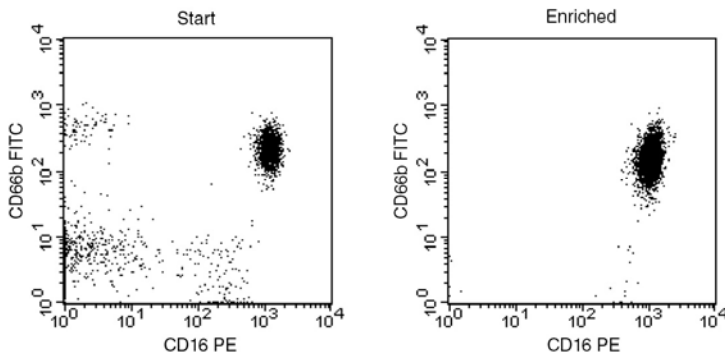
ASSESSING PURITY

For purity assessment of neutrophils (CD16+CD66b+) by flow cytometry use fluorochrome-conjugated:

- Anti-Human CD16 Antibody, Clone 3G8 (Catalog #60041), and
- Anti-Human CD66b Antibody, Clone G10F5 (Catalog #60086)

Alternatively, purity may be assessed by performing a cytospin on the enriched cells followed by Wright's or May-Grunwald staining (e.g. Sigma-Aldrich Catalog #W0625 or #MG500, respectively).

Data



Starting with HetaSep™-treated whole blood, the neutrophil content (CD16+CD66b+) of the enriched fraction typically ranges from 98 - 99%. In the above example, the purities of the start and final enriched fractions are 55% and 99%, respectively.

STEMCELL TECHNOLOGIES INC.'S QUALITY MANAGEMENT SYSTEM IS CERTIFIED TO ISO 13485. PRODUCTS ARE FOR RESEARCH USE ONLY AND NOT INTENDED FOR HUMAN OR ANIMAL DIAGNOSTIC OR THERAPEUTIC USES UNLESS OTHERWISE STATED.

Copyright © 2015 by STEMCELL Technologies Inc. All rights reserved including graphics and images. STEMCELL Technologies & Design, STEMCELL Shield Design, Scientists Helping Scientists, HetaSep, EasySep, RoboSep, and SepMate are trademarks of STEMCELL Technologies Inc. Lymphoprep is a trademark of AXIS-SHIELD. All other trademarks are the property of their respective holders. While STEMCELL has made all reasonable efforts to ensure that the information provided by STEMCELL and its suppliers is correct, it makes no warranties or representations as to the accuracy or completeness of such information.