



EasySep™ HLA Whole Blood T Cell Enrichment Kit

Negative Selection

Catalog #19951HLA

For processing 200 mL whole blood



Scientists Helping Scientists™ | WWW.STEMCELL.COM

TOLL FREE PHONE 1 800 667 0322 • PHONE +1 604 877 0713

INFO@STEMCELL.COM • TECHSUPPORT@STEMCELL.COM

FOR GLOBAL CONTACT DETAILS VISIT OUR WEBSITE

Document #29103 | Version 1_4_0

Description

Isolate highly purified T cells directly from HetaSep™-treated whole blood or washed leukapheresis samples by immunomagnetic negative selection.

- Fast, easy-to-use and column-free
- Up to 98% purity
- Untouched, viable cells
- Compatible with downstream HLA assays

This kit targets non-T cells for removal with antibodies recognizing specific cell surface markers. Unwanted cells are labeled with antibodies and magnetic particles, and separated without columns using an EasySep™ magnet. Desired cells are simply poured off into a new tube. Isolated cells are immediately available for downstream applications such as flow cytometry, culture, or DNA/RNA extraction.

Component Descriptions

| COMPONENT NAME | COMPONENT # | QUANTITY | STORAGE | SHELF LIFE | FORMAT |
|--|-------------|-----------|-------------------------------------|--|---|
| EasySep™ HLA WB T Cell Enrichment Cocktail | 19951HC | 1 x 1 mL | Store at 2 - 8°C. Do not freeze. | Stable until expiry date (EXP) on label. | A combination of monoclonal antibodies in PBS. |
| EasySep™ D Magnetic Particles | 19250H | 3 x 1 mL | Store at 2 - 8°C. Do not freeze. | Stable until expiry date (EXP) on label. | A suspension of magnetic particles in TBS. |
| HetaSep™ | 07806 | 2 x 20 mL | Store at 15 - 25°C. | Stable until expiry date (EXP) on label. | Hetastarch solution used for erythrocyte aggregation. |

PBS - phosphate-buffered saline; TBS - TRIS-buffered saline

Components may be shipped at room temperature (15 - 25°) but should be stored as indicated above.

Sample Preparation

For available fresh and frozen samples, see www.stemcell.com/primarycells.

WHOLE BLOOD

1. Collect whole blood in a blood collection tube containing heparin or ACD as an anticoagulant. Using EDTA as an anticoagulant is not recommended.
2. Based on blood sample volume, select the appropriate size tube according to Table 1. Add 1 part HetaSep™ to 5 parts blood and mix well.
3. a. Place sample at room temperature (15 - 25°C) or 37°C and allow to settle until the red blood cell (RBC) interface is approximately 50% of the total volume.
OR
b. Centrifuge the sample according to Table 1 at 90 x g at room temperature (15 - 25°C) with the brake off. Remove sample from centrifuge and allow to sit undisturbed at room temperature for 10 minutes. This will allow further sedimentation of the RBCs and will improve nucleated cell recovery.
4. Harvest the supernatant containing the nucleated cells.
5. Top up the harvested fraction with recommended medium and centrifuge at 120 x g for 10 minutes at room temperature with the brake off.
6. Carefully remove the supernatant.
OPTIONAL: Lyse remaining RBCs with Ammonium Chloride Solution (Catalog #07800).
7. Resuspend cells in the recommended medium at 1/10th of the original starting volume (e.g. resuspend the cells recovered from 10 mL of whole blood in 1 mL of recommended medium).

Table 1. Sample Preparation Information

| START BLOOD VOLUME* | RECOMMENDED TUBE | CENTRIFUGE TIME (MINUTES) | CENTRIFUGE TIME FOR BLOOD ≥ 48 HOURS OLD (MINUTES) |
|---------------------|--|---|--|
| 2 mL | 5 mL (12 x 75 mm) polystyrene round-bottom tube (e.g. Catalog #38007) | 1 | 2 |
| 3 mL | 5 mL (12 x 75 mm) polystyrene round-bottom tube (e.g. Catalog #38007) | 1 | 4 |
| 4 mL | 5 mL (12 x 75 mm) polystyrene round-bottom tube (e.g. Catalog #38007) | 2 | 5 |
| 10 mL | 14 mL (17 x 95 mm) polystyrene round-bottom tube (e.g. Catalog #38008) | 5 | 7 |
| 20 mL | 50 mL (30 x 115 mm) conical tube (e.g. Catalog #38010) | 3 NOTE: For > 24-hour-old blood samples, gravity sedimentation is recommended; see step 3a | Gravity sedimentation recommended; see step 3a |
| 40 mL | 50 mL (30 x 115 mm) conical tube (e.g. Catalog #38010) | 4 NOTE: For > 24-hour-old blood samples, gravity sedimentation is recommended; see step 3a | Gravity sedimentation recommended; see step 3a |

* Start blood volume refers to the volume before HetaSep™ is added.

LEUKAPHERESIS (LEUKO PAK)

T cells can be isolated directly from peripheral blood leukapheresis samples without the use of HetaSep™. Instead, wash the leukapheresis sample prior to cell separation as follows:

1. Add 1 part recommended medium to 1 part leukapheresis sample.
2. Centrifuge sample at 140 x g for 10 minutes at room temperature (15 - 25°C) with the brake off.
3. Carefully remove and discard the supernatant.
4. Resuspend cells at 5×10^7 cells/mL in recommended medium.



Recommended Medium

EasySep™ Buffer (Catalog #20144), RoboSep™ Buffer (Catalog #20104), or PBS containing 2% fetal bovine serum (FBS) and 1 mM EDTA. Medium should be free of Ca⁺⁺ and Mg⁺⁺.

Directions for Use – Manual EasySep™ Protocols

See pages 1 and 2 for Sample Preparation and Recommended Medium. Refer to Tables 2 and 3 for detailed instructions regarding the EasySep™ procedure for each magnet.

Table 2. EasySep™ HLA Whole Blood T Cell Enrichment Kit Protocol




| | | EASYSEP™ MAGNETS | |
|------|---|---|--|
| STEP | INSTRUCTIONS |  EasySep™ (Catalog #18000) | "The Big Easy" (Catalog #18001)  |
| 1 | Prepare HetaSep™-treated sample within the volume range. | 0.25 - 2 mL | 0.25 - 8 mL |
| | Add sample to required tube. | 5 mL (12 x 75 mm) polystyrene round-bottom tube (e.g. Catalog #38007) | 14 mL (17 x 95 mm) polystyrene round-bottom tube (e.g. Catalog #38008) |
| 2 | Add Enrichment Cocktail to sample. | 50 µL/mL of sample | 50 µL/mL of sample |
| | Mix and incubate. | RT for 10 minutes | RT for 10 minutes |
| 3 | Vortex Magnetic Particles. NOTE: Particles should appear evenly dispersed. | 30 seconds | 30 seconds |
| 4 | Add Magnetic Particles to sample. | 150 µL/mL of sample | 150 µL/mL of sample |
| | Mix and incubate. | RT for 5 minutes | RT for 5 minutes |
| 5 | Add recommended medium to top up the sample to the indicated volume. Mix by gently pipetting up and down 2 - 3 times. | Top up to 2.5 mL | <ul style="list-style-type: none"> • Top up to 5 mL for samples < 5 mL • Top up to 10 mL for samples ≥ 5 mL |
| | Place the tube (without lid) into the magnet and incubate. | RT for 5 minutes | RT for 5 minutes |
| 6 | Pick up the magnet, and in one continuous motion invert the magnet and tube,* pouring the enriched cell suspension into a new tube. | Isolated cells are immediately compatible with flow cytometric crossmatch analysis and any other downstream application** | Isolated cells are immediately compatible with flow cytometric crossmatch analysis and any other downstream application** |

RT - room temperature (15 - 25°C)

* Leave the magnet and tube inverted for 2 - 3 seconds, then return upright. Do not shake or blot off any drops that may remain hanging from the mouth of the tube.

** Residual RBCs can be removed by lysis using Ammonium Chloride Solution if desired.

Table 3. EasySep™ HLA Whole Blood T Cell Enrichment Kit Protocol

| STEP | INSTRUCTIONS | EASYSEP™ MAGNETS | | |
|------|---|--|--|---|
| | |  EasyEights™ (Catalog #18103) |  |  Easy 50 (Catalog #18002) |
| | | 5 mL tube | 14 mL tube | |
| 1 | Prepare sample at the indicated cell concentration within the volume range. | 0.25 - 2 mL | 0.25 - 8 mL | 1 - 40 mL |
| | Add sample to required tube. | 5 mL (12 x 75 mm) polystyrene round-bottom tube (e.g. Catalog #38007) | 14 mL (17 x 95 mm) polystyrene round-bottom tube (e.g. Catalog #38008) | 50 mL (30 x 115 mm) conical tube (e.g. Catalog #38010) |
| 2 | Add Enrichment Cocktail to sample. | 50 µL/mL of sample | 50 µL/mL of sample | 50 µL/mL of sample |
| | Mix and incubate. | RT for 10 minutes | RT for 10 minutes | RT for 10 minutes |
| 3 | Vortex Magnetic Particles. NOTE: Particles should appear evenly dispersed. | 30 seconds | 30 seconds | 30 seconds |
| 4 | Add Magnetic Particles to sample. | 150 µL/mL of sample | 150 µL/mL of sample | 150 µL/mL of sample |
| | Mix and incubate. | RT for 5 minutes | RT for 5 minutes | RT for 5 minutes |
| 5 | Add recommended medium to top up sample to the indicated volume. Mix by gently pipetting up and down 2 - 3 times. | Top up to 2.5 mL | <ul style="list-style-type: none"> • Top up to 5 mL for samples < 5 mL • Top up to 10 mL for samples ≥ 5 mL | <ul style="list-style-type: none"> • Top up to 25 mL for samples ≤ 10 mL • Top up to 50 mL for samples > 10 mL |
| | Place the tube (without lid) into the magnet and incubate. | RT for 10 minutes | RT for 10 minutes | RT for 5 minutes |
| 6 | Carefully pipette** (do not pour) the enriched cell suspension into a new tube. | Isolated cells are immediately compatible with flow cytometric crossmatch analysis and any other downstream application*** | Isolated cells are immediately compatible with flow cytometric crossmatch analysis and any other downstream application*** | Isolated cells are immediately compatible with flow cytometric crossmatch analysis and any other downstream application*** |

RT - room temperature (15 - 25°C)

** Collect the entire supernatant, all at once, into a single pipette (e.g. for EasyEights™ 5 mL tube use a 2 mL serological pipette [Catalog #38002]; for EasyEights™ 14 mL tube use a 10 mL serological pipette [Catalog #38004]).

*** Residual RBCs can be removed by lysis using Ammonium Chloride Solution if desired.

Directions for Use – Fully Automated RoboSep™ Protocol

See pages 1 and 2 for Sample Preparation and Recommended Medium. Refer to Table 4 for detailed instructions regarding the RoboSep™ procedure.

Table 4. RoboSep™ HLA Whole Blood T Cell Enrichment Kit Protocol

| STEP | INSTRUCTIONS | RoboSep™ (Catalog #20000 and #21000) |
|------|---|---|
| 1 | Prepare HetaSep™-treated sample within the volume range. | 0.25 - 6.5 mL |
| | Add sample to required tube. | 14 mL (17 x 95 mm) polystyrene round-bottom tube (e.g. Catalog #38008) |
| 2 | Select protocol. | Human T Cell Negative Selection from WB 19951HLA |
| 3 | Vortex Magnetic Particles. NOTE: Particles should appear evenly dispersed. | 30 seconds |
| 4 | Load the carousel. | Follow on-screen prompts |
| | Start the protocol. | Press the green "Run" button |
| 5 | Unload the carousel when the run is complete. | Isolated cells are immediately compatible with flow cytometric crossmatch analysis and any other downstream application** |

** Residual RBCs can be removed by lysis using Ammonium Chloride Solution if desired.

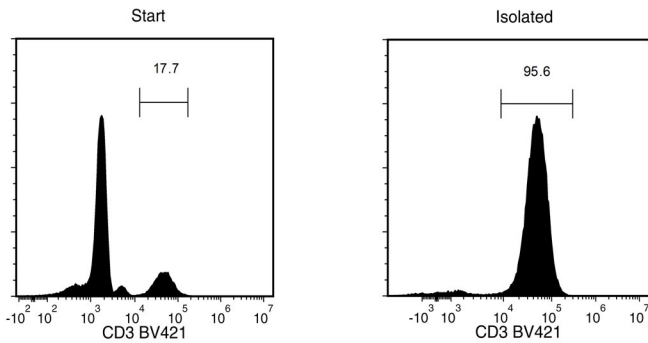
Notes and Tips

ASSESSING PURITY

For purity assessment of T cells (CD3+) by flow cytometry, use the following fluorochrome-conjugated antibody clone:

- Anti-Human CD3 Antibody, Clone UCHT1 (Catalog #60011), or Clone SK7 (Catalog #60127)

Data



Starting with whole blood, the T cell content (CD3+) of the enriched fraction is typically 96.9 ± 1.2% (mean ± SD using the purple EasySep™ Magnet). In the above example, the purities of the start and final enriched fractions are 17.7% and 95.6%, respectively.

STEMCELL TECHNOLOGIES INC.'S QUALITY MANAGEMENT SYSTEM IS CERTIFIED TO ISO 13485. PRODUCTS ARE FOR RESEARCH USE ONLY AND NOT INTENDED FOR HUMAN OR ANIMAL DIAGNOSTIC OR THERAPEUTIC USES UNLESS OTHERWISE STATED.

Copyright © 2018 by STEMCELL Technologies Inc. All rights reserved including graphics and images. STEMCELL Technologies & Design, STEMCELL Shield Design, Scientists Helping Scientists, EasyEights, EasySep, HetaSep, and RoboSep are trademarks of STEMCELL Technologies Canada Inc. All other trademarks are the property of their respective holders. While STEMCELL has made all reasonable efforts to ensure that the information provided by STEMCELL and its suppliers is correct, it makes no warranties or representations as to the accuracy or completeness of such information.