

Antibodies

Anti-Human CD196 (CCR6) Antibody, Clone G034E3, Alexa Fluor® 488

Mouse monoclonal IgG2b antibody
against human, rhesus, cynomolgus
CD196 (CCR6), Alexa Fluor® 488-
conjugated

Catalog #60090AD
#60090AD.1

100 Tests 5 µL/test
25 Tests 5 µL/test



Scientists Helping Scientists™ | WWW.STEMCELL.COM

TOLL FREE PHONE 1 800 667 0322 • PHONE +1 604 877 0713

INFO@STEMCELL.COM • TECHSUPPORT@STEMCELL.COM

FOR GLOBAL CONTACT DETAILS VISIT OUR WEBSITE

Product Description

The G034E3 antibody reacts with an extracellular epitope on human CD196 (CCR6). CD196 is an ~42 kDa seven-pass G protein-coupled transmembrane chemokine receptor expressed predominantly on the surface of immature dendritic, B, and memory T cells, but also on natural killer and Langerhans cells. The chemokine CCL20 (MIP-3α) has been identified as a ligand for CD196 and its binding induces an increase in the intracellular Ca⁺⁺ ion concentration. CD196 may play roles in B cell maturation and the differentiation of B and T cells, and appears to be involved in chemotactic recruitment of CD196-expressing cells during the immune and inflammatory responses, a function implicated in the pathogenesis of diseases such as rheumatoid arthritis, inflammatory bowel disease and psoriasis. Abundant expression of CD196 is also observed on B cells of patients with progressive chronic lymphocytic leukemia.

Target Antigen Name:	CD196 (CCR6)
Alternative Names:	CCR6, CCR-6, chemokine (C-C motif) receptor 6
Gene ID:	1235
Species Reactivity:	Human, Rhesus, Cynomolgus
Host Species:	Mouse
Clonality:	Monoclonal
Clone:	G034E3
Isotype:	IgG2b, kappa
Immunogen:	CCR6-transfected cells
Conjugate:	Alexa Fluor® 488

Applications

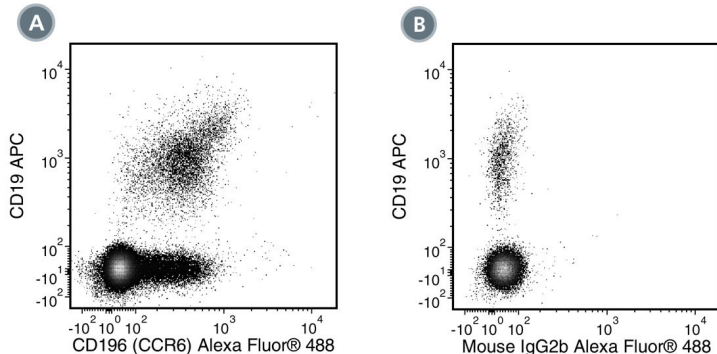
Verified:	FC
Reported:	FC
Special Applications:	This antibody clone has been verified for purity assessments of cells isolated with EasySep™ kits, including EasySep™ Human Th1 Isolation Kit (Catalog #18161) and EasySep™ Human Th17 Isolation Kit (Catalog #18162).

Abbreviations: CellSep: Cell separation; ChIP: Chromatin immunoprecipitation; FA: Functional assay; FC: Flow cytometry; ICC: Immunocytochemistry; IF: Immunofluorescence microscopy; IHC: Immunohistochemistry; IP: Immunoprecipitation; RIA: Radioimmunoassay; WB: Western blotting

Properties

Formulation:	Phosphate-buffered solution, pH 7.2, containing 0.09% sodium azide and 0.2% (w/v) bovine serum albumin
Purification:	The antibody was purified by affinity chromatography and conjugated with Alexa Fluor® 488 under optimal conditions. The solution is free of unconjugated Alexa Fluor® 488.
Stability and Storage:	Product stable at 2 - 8°C when stored undiluted. Do not freeze. Protect product from prolonged exposure to light. For product expiry date, please contact techsupport@stemcell.com.
Directions for Use:	For flow cytometry the suggested use of this antibody is 5 µL per 1 x 10 ⁶ cells in 100 µL volume or per 100 µL of whole blood. It is recommended that the antibody be titrated for optimal performance for each application.

Data



(A) Flow cytometry analysis of human peripheral blood mononuclear cells (PBMCs) labeled with Anti-Human CD196 (CCR6) Antibody, Clone G034E3, Alexa Fluor® 488 and Anti-Human CD19 Antibody, Clone HIB19, APC (Catalog 60005AZ).

(B) Flow cytometry analysis of human PBMCs labeled with a mouse IgG2b, kappa Alexa Fluor® 488 isotype control antibody and Anti-Human CD19 Antibody, Clone HIB19, APC.

Related Products

For a complete list of antibodies, including other conjugates, sizes and clones, as well as related products available from STEMCELL Technologies, please visit our website at www.stemcell.com/antibodies or contact us at techsupport@stemcell.com.

References

1. Bekiaris V et al. (2013) Human CD4+CD3- innate-like T cells provide a source of TNF and lymphotoxin- $\alpha\beta$ and are elevated in rheumatoid arthritis. *J Immunol* 191(9): 4611–8. (FC)
2. Chen D et al. (2012) Chemokine/chemokine receptor interactions contribute to the accumulation of Th17 cells in patients with esophageal squamous cell carcinoma. *Hum Immunol* 73(11): 1068–72. (FC)
3. Singh SP et al. (2008) Human T cells that are able to produce IL-17 express the chemokine receptor CCR6. *J Immunol* 180(1): 214–21. (FC)
4. Acosta-Rodriguez E V et al. (2007) Surface phenotype and antigenic specificity of human interleukin 17-producing T helper memory cells. *Nat Immunol* 8(6): 639–46. (FC)
5. Hirota K et al. (2007) Preferential recruitment of CCR6-expressing Th17 cells to inflamed joints via CCL20 in rheumatoid arthritis and its animal model. *J Exp Med* 204(12): 2803–12. (FA, FC)
6. McDonald KG et al. (2007) CC chemokine receptor 6 expression by B lymphocytes is essential for the development of isolated lymphoid follicles. *Am J Pathol* 170(4): 1229–40. (FC)
7. Homey B et al. (2000) Up-regulation of macrophage inflammatory protein-3 alpha/CCL20 and CC chemokine receptor 6 in psoriasis. *J Immunol* 164(12): 6621–32. (FC)
8. Liao F et al. (1999) CC-chemokine receptor 6 is expressed on diverse memory subsets of T cells and determines responsiveness to macrophage inflammatory protein 3 alpha. *J Immunol* 162(1): 186–94. (FC)
9. Baba M et al. (1997) Identification of CCR6, the specific receptor for a novel lymphocyte-directed CC chemokine LARC. *J Biol Chem* 272(23): 14893–8.
10. Greaves DR et al. (1997) CCR6, a CC chemokine receptor that interacts with macrophage inflammatory protein 3alpha and is highly expressed in human dendritic cells. *J Exp Med* 186(6): 837–44.
11. Zaballos A et al. (1996) Molecular cloning and RNA expression of two new human chemokine receptor-like genes. *Biochem Biophys Res Commun* 227(3): 846–53.

STEMCELL TECHNOLOGIES INC.'S QUALITY MANAGEMENT SYSTEM IS CERTIFIED TO ISO 13485. PRODUCTS ARE FOR RESEARCH USE ONLY AND NOT INTENDED FOR HUMAN OR ANIMAL DIAGNOSTIC OR THERAPEUTIC USES UNLESS OTHERWISE STATED.

Copyright © 2016 by STEMCELL Technologies Inc. All rights reserved including graphics and images. STEMCELL Technologies & Design, STEMCELL Shield Design, Scientists Helping Scientists and EasySep are trademarks of STEMCELL Technologies Inc. All other trademarks are the property of their respective holders. Alexa Fluor® is a registered trademark of Life Technologies Corporation. This product is licensed for internal research use only and its sale is expressly conditioned on the buyer not using it for manufacturing, performing a service, or medical test, or otherwise generating revenue. For use other than research, contact Life Technologies Corporation, 5791 Van Allen Way, Carlsbad, CA 92008 USA or outlicensing@lifetech.com. While STEMCELL has made all reasonable efforts to ensure that the information provided by STEMCELL and its suppliers is correct, it makes no warranties or representations as to the accuracy or completeness of such information.