

# EasySep™ Direct Human B-CLL Cell Isolation Kit

Negative Selection  
Catalog #19664

For processing 100 mL whole blood



Scientists Helping Scientists™ | [WWW.STEMCELL.COM](http://WWW.STEMCELL.COM)

TOLL FREE PHONE 1 800 667 0322 • PHONE +1 604 877 0713  
INFO@STEMCELL.COM • TECHSUPPORT@STEMCELL.COM  
FOR GLOBAL CONTACT DETAILS VISIT OUR WEBSITE

Document #28072 | Version 1\_1\_4

## Description

Isolate highly purified B-CLL cells directly from human whole blood by immunomagnetic negative selection. The depletion cocktail in this kit does not contain antibodies against CD43, which can be expressed on malignant cells in chronic lymphocytic leukemia (CLL) samples.

The benefits of this kit include:

- > 99.9% red blood cell (RBC) depletion without the need for density gradient centrifugation, sedimentation, or lysis
- Fast, easy-to-use and column-free
- Isolated cells are untouched

This kit targets non-B cells for removal with antibodies recognizing specific cell surface markers. Unwanted cells are labeled with antibodies and EasySep™ Direct RapidSpheres™, and separated using an EasySep™ magnet. Desired cells are simply collected into a new tube and are immediately available for downstream applications such as flow cytometry, culture, or DNA/RNA extraction.

## Component Descriptions

COMPONENT NAME	COMPONENT #	QUANTITY	STORAGE	SHELF LIFE	FORMAT
EasySep™ Direct Human B-CLL Cell Isolation Cocktail	19664C	2 x 2.5 mL	Store at 2 - 8°C. Do not freeze.	Stable until expiry date (EXP) on label.	A combination of monoclonal antibodies in PBS.
EasySep™ Direct RapidSpheres™ 50300	50300	4 x 2.5 mL	Store at 2 - 8°C. Do not freeze.	Stable until expiry date (EXP) on label.	A suspension of magnetic particles and monoclonal antibodies in PBS.

PBS - phosphate-buffered saline

Components may be shipped at room temperature (15 - 25°C) and should be refrigerated upon receipt.

Precipitate may be observed in the cocktail vial but will not affect performance.

## Sample Preparation

For optimal RBC depletion, collect blood using heparin or acid citrate dextrose (ACD) as an anticoagulant. The use of K2EDTA or K3EDTA as an anticoagulant is not recommended.

For best recovery, use unprocessed human whole blood. Recovery of the desired isolated cells decreases with samples that are older than 24 hours.

The volume of blood that can be processed depends on the EasySep™ magnet used for the isolation procedure. Blood samples must be placed in the required tube to properly fit into the appropriate EasySep™ magnet (see Tables 1 and 2).



## Recommended Medium

D-PBS (Without Ca++ and Mg++; Catalog #37350)

**Directions for Use – Manual EasySep™ Protocols**

See page 1 for Sample Preparation and Recommended Medium. Refer to Tables 1 and 2 for detailed instructions regarding the EasySep™ procedure for each magnet.

**Table 1. EasySep™ Direct Human B-CLL Cell Isolation Kit Protocol**




STEP	INSTRUCTIONS	EASYSEP™ MAGNETS	
		 EasySep™ (Catalog #18000)	 “The Big Easy” (Catalog #18001)
1	Collect sample within the volume range.	0.5 - 1.5 mL	1.5 - 7 mL
	Add whole blood sample to required tube.	5 mL (12 x 75 mm) polystyrene round-bottom tube (e.g. Catalog #38007)	14 mL (17 x 95 mm) polystyrene round-bottom tube (e.g. Catalog #38008)
2	Vortex RapidSpheres™. NOTE: Particles should appear evenly dispersed.	30 seconds	30 seconds
3	Add Isolation Cocktail to sample.	50 µL/mL of sample	50 µL/mL of sample
4	Add RapidSpheres™ to sample.	50 µL/mL of sample	50 µL/mL of sample
5	Mix and incubate.	RT for 5 minutes	RT for 5 minutes
6	Add recommended medium to top up the sample to the indicated volume. Mix by gently pipetting up and down 2 - 3 times.	Top up to 2.5 mL	<ul style="list-style-type: none"> <li>• Top up to double the volume for samples ≤ 5 mL</li> <li>• Top up to 10 mL for samples &gt; 5 mL</li> </ul>
7	Place the tube (without lid) into the magnet and incubate.	RT for 5 minutes	RT for 5 minutes
8	Pick up the magnet, and in one continuous motion invert the magnet and tube, pouring the enriched cell suspension* into a new tube.	Use a new 5 mL tube	Use a new 14 mL tube
9	Add RapidSpheres™ to the new tube containing the enriched cells.	Use the same volume as in step 4	Use the same volume as in step 4
	Mix and incubate.	RT for 5 minutes	RT for 5 minutes
10	Remove the tube from the magnet and place the tube from step 9 (without lid) into the magnet and incubate for a second separation.	RT for 5 minutes	RT for 5 minutes
11	Pick up the magnet, and in one continuous motion invert the magnet and tube,** pouring the enriched cell suspension into a new tube.	Isolated cells are ready for use	Use a new 14 mL tube
12	Remove the tube from the magnet and place the new tube (without lid) into the magnet and incubate for a third separation.	---	RT for 5 minutes
13	Pick up the magnet, and in one continuous motion invert the magnet and tube,** pouring the enriched cell suspension into a new tube.	---	Isolated cells are ready for use

RT - room temperature (15 - 25°C)

\* Following the first magnetic separation, the collected cells may contain a significant amount of RBCs and may look similar to the original unprocessed human whole blood sample.

\*\* To minimize RBC contamination in the isolated cells, pour off the sample along a clean area of the tube (i.e. the opposite side to where the sample was poured in).

**Table 2. EasySep™ Direct Human B-CLL Cell Isolation Kit Protocol**

STEP	INSTRUCTIONS	EASYSEP™ MAGNETS		
		 <b>EasyEights™ (Catalog #18103)</b>		 <b>Easy 50 (Catalog #18002)</b>
		5 mL tube	14 mL tube	
1	Collect sample within the volume range.	0.5 - 1.5 mL	1.5 - 7 mL	7 - 30 mL
	Add whole blood sample to required tube.	5 mL (12 x 75 mm) polystyrene round-bottom tube (e.g. Catalog #38007)	14 mL (17 x 95 mm) polystyrene round-bottom tube (e.g. Catalog #38008)	50 mL (30 x 115 mm) conical tube (e.g. Catalog #38010)
2	Vortex RapidSpheres™. NOTE: Particles should appear evenly dispersed.	30 seconds	30 seconds	30 seconds
3	Add Isolation Cocktail to sample.	50 µL/mL of sample	50 µL/mL of sample	50 µL/mL of sample
4	Add RapidSpheres™ to sample.	50 µL/mL of sample	50 µL/mL of sample	50 µL/mL of sample
5	Mix and incubate.	RT for 5 minutes	RT for 5 minutes	RT for 5 minutes
6	Add recommended medium to top up the sample to the indicated volume. Mix by gently pipetting up and down 2 - 3 times.	Top up to 2.5 mL	<ul style="list-style-type: none"> <li>• Top up to double the volume for samples ≤ 5 mL</li> <li>• Top up to 10 mL for samples &gt; 5 mL</li> </ul>	<ul style="list-style-type: none"> <li>• Top up to double the volume for samples ≤ 25 mL</li> <li>• Top up to 50 mL for samples &gt; 25 mL</li> </ul>
7	Place the tube (without lid) into the magnet and incubate.	RT for 5 minutes	RT for 5 minutes	RT for 10 minutes
8	Carefully pipette*** (do not pour) the enriched cell suspension into a new tube. NOTE: Collect the entire clear fraction from the top to bottom. For optimal recovery, also collect a small volume of RBCs (up to 10% of the starting sample volume).	Use a new 5 mL tube	Use a new 14 mL tube	Use a new 50 mL tube
9	Add RapidSpheres™ to the new tube containing the enriched cells.	Use the same volume as in step 4	Use the same volume as in step 4	Use the same volume as in step 4
	Mix and incubate.	RT for 5 minutes	RT for 5 minutes	RT for 5 minutes
10	Remove the tube from the magnet and place the tube from step 9 (without lid) into the magnet and incubate for a second separation.	RT for 5 minutes	RT for 5 minutes	RT for 5 minutes
11	Carefully pipette*** (do not pour) the enriched cell suspension into a new tube. NOTE: Collect only the clear fraction.	Use a new 5 mL tube	Use a new 14 mL tube	Use a new 50 mL tube
12	Remove the tube from the magnet and place the new tube (without lid) containing the enriched cells into the magnet and incubate for a third separation.	RT for 5 minutes	RT for 5 minutes	RT for 5 minutes
13	Carefully pipette*** (do not pour) the enriched cell suspension into a new tube. NOTE: Collect only the clear fraction.	Isolated cells are ready for use	Isolated cells are ready for use	Isolated cells are ready for use

RT- room temperature (15 - 25°C)

\*\*\* Collect the entire enriched cell suspension, all at once, into a single pipette (e.g. for EasyEights™ 5 mL tube use a 2 mL serological pipette [Catalog #38002]; for EasyEights™ 14 mL tube use a 10 mL serological pipette [Catalog #38004]).

## Notes and Tips

### REMOVAL OF RESIDUAL RBCs IN THE ISOLATED CELLS

Typically, further RBC depletion is not required following cell isolation. If residual RBCs are visible in the isolated cell pellet following centrifugation after the end of the protocol, resuspend in a small volume (0.2 - 2.5 mL) of recommended medium or desired culture medium and place in a smaller EasySep™ magnet for an additional 5-minute separation. Collect the supernatant; the isolated cells are ready for use in downstream applications. Residual RBCs may also be lysed using Ammonium Chloride Solution (Catalog #07800).

### ASSESSING PURITY

For purity assessment of B cells by flow cytometry, use the following fluorochrome-conjugated antibody clones:

- Anti-Human CD19 Antibody, Clone HIB19 (Catalog #60005), or
- Anti-Human CD20 Antibody, Clone 2H7 (Catalog #60008), and
- Anti-Human CD45 Antibody, Clone HI30 (Catalog #60018), or Clone 2D1 (Catalog #60123)

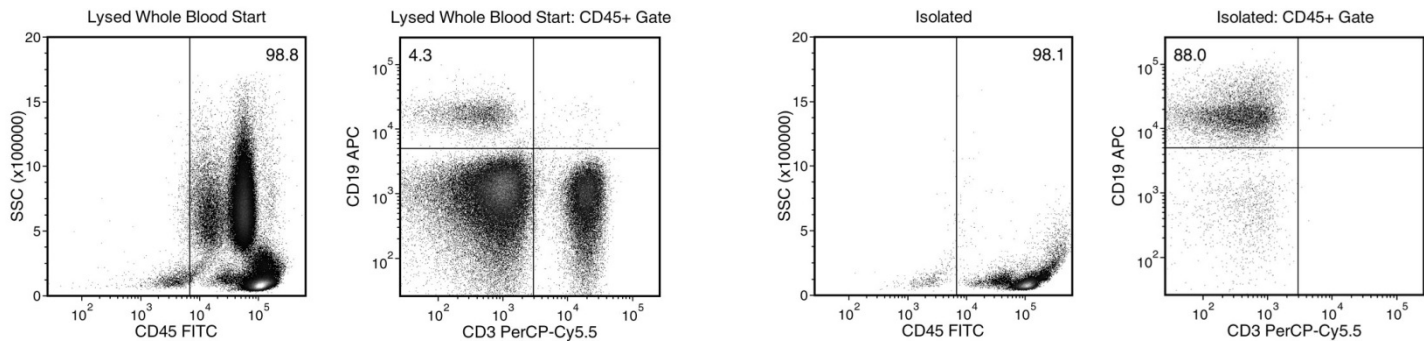
For purity assessment of B-CLL cells by flow cytometry, use the following fluorochrome-conjugated antibody clones:

- Anti-Human CD5 Antibody, Clone UCHT2 (Catalog #60082), and
- Anti-Human CD19 Antibody, Clone HIB19, and
- Anti-Human CD45 Antibody, Clone HI30, or Clone 2D1

NOTE: It is recommended to assess purity on the CD45-positive cells to exclude debris, platelets, and RBCs.

## Data

Starting with human whole blood from normal healthy donors, the typical B cell (CD3-CD19+) content of the non-lysed final isolated fraction is  $87.0 \pm 7.6\%$  (gated on CD45) or  $84.1 \pm 11.7\%$  (not gated on CD45).



In the above example, the B cell (CD3-CD19+) content of the lysed whole blood start and non-lysed final isolated fraction is 4.3% and 88.0% (gated on CD45), respectively, or 4.3% and 86.2% (not gated on CD45), respectively. The starting frequency of B cells in the non-lysed whole blood start sample above is 0.004% (data not shown).

NOTE: The purity of isolated cells is typically higher when processing samples that have an elevated starting frequency of B cells (e.g. CLL samples).

STEMCELL TECHNOLOGIES INC.'S QUALITY MANAGEMENT SYSTEM IS CERTIFIED TO ISO 13485. PRODUCTS ARE FOR RESEARCH USE ONLY AND NOT INTENDED FOR HUMAN OR ANIMAL DIAGNOSTIC OR THERAPEUTIC USES UNLESS OTHERWISE STATED

Copyright © 2019 by STEMCELL Technologies Inc. All rights reserved including graphics and images. STEMCELL Technologies & Design, STEMCELL Shield Design, Scientists Helping Scientists, EasyEights, EasySep, and RapidSpheres are trademarks of STEMCELL Technologies Canada Inc. All other trademarks are the property of their respective holders. While STEMCELL has made all reasonable efforts to ensure that the information provided by STEMCELL and its suppliers is correct, it makes no warranties or representations as to the accuracy or completeness of such information.