

## Anti-Human CD14 Antibody, Clone M5E2, APC



Scientists Helping Scientists™ | [WWW.STEMCELL.COM](http://WWW.STEMCELL.COM)

TOLL FREE PHONE 1 800 667 0322 • PHONE +1 604 877 0713

[INFO@STEMCELL.COM](mailto:INFO@STEMCELL.COM) • [TECHSUPPORT@STEMCELL.COM](mailto:TECHSUPPORT@STEMCELL.COM)

FOR GLOBAL CONTACT DETAILS VISIT OUR WEBSITE

## Antibodies

Mouse monoclonal IgG2a antibody  
against human, rhesus, cynomolgus  
CD14, APC-conjugated

Catalog #60004AZ  
#60004AZ.1

100 Tests 5 µL/test  
25 Tests 5 µL/test

## Product Description

The M5E2 antibody reacts with CD14, an ~53 - 55 kDa GPI-anchored transmembrane glycoprotein expressed at high levels on the surface of peripheral blood monocytes and macrophages, and at lower levels on granulocytes. An ~10-fold difference in expression levels between monocytes/macrophages and granulocytes makes CD14 a useful marker for distinguishing these cell populations. CD14 is also found on tissue macrophages, Langerhans cells and dendritic cells. CD14 functions as a high-affinity receptor for complexes of lipopolysaccharide (LPS) and serum LPS-binding protein and modulates LPS-dependent signal transduction during the immune response to gram-negative pathogens by acting as a co-receptor for TLR 4 and MD-2. This triggers activation of NF-kappa-B, cytokine secretion, and induction of the inflammatory response. Two soluble forms of CD14 have also been described (~48 and ~55 kDa).

Target Antigen Name:	CD14
Alternative Names:	LPS receptor
Gene ID:	929
Species Reactivity:	Human, Rhesus, Cynomolgus, Chimpanzee, Capuchin Monkey, Common Marmoset, Cotton-topped Tamarin, Pigtailed Macaque, Squirrel Monkey, Cow, Dog, Pig, Sheep
Host Species:	Mouse
Clonality:	Monoclonal
Clone:	M5E2
Isotype:	IgG2a, kappa
Immunogen:	Full-length human CD14 protein
Conjugate:	APC

## Applications

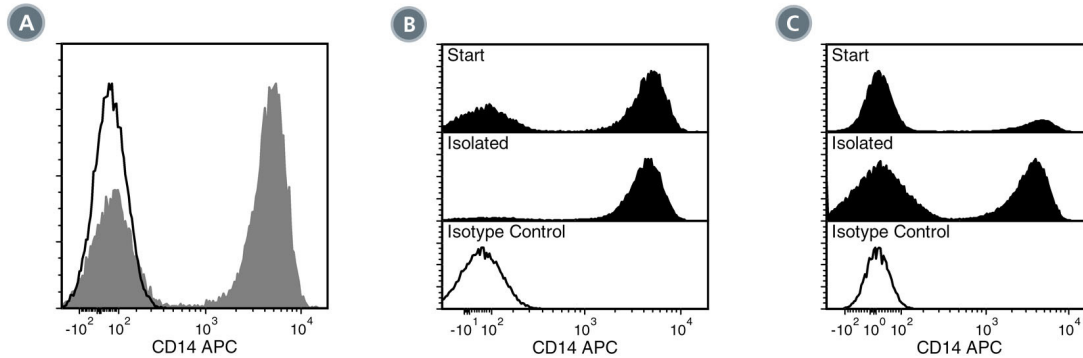
Verified:	FC
Reported:	FC
Special Applications:	This antibody clone has been verified for purity assessments of cells isolated with EasySep™ kits, including EasySep™ Human Myeloid Positive Selection Kit (Catalog #18653) and EasySep™ Human CD14 Positive Selection Kit (Catalog #18058), as well as EasySep™ HLA Whole Blood CD33 Positive Selection Kit (Catalog #18287HLA), EasySep™ HLA Whole Blood Myeloid Positive Selection Kit (Catalog #18683HLA), and EasySep™ Human Buffy Coat CD14 Positive Selection Kit (Catalog #18088).

Abbreviations: CellSep: Cell separation; ChIP: Chromatin immunoprecipitation; FA: Functional assay; FACS: Fluorescence activated cell sorting; FC: Flow cytometry; ICC: Immunocytochemistry; IF: Immunofluorescence microscopy; IHC: Immunohistochemistry; IP: Immunoprecipitation; RIA: Radioimmunoassay; WB: Western blotting

## Properties

Formulation:	Phosphate-buffered solution, pH 7.2, containing 0.09% sodium azide and 0.2% (w/v) bovine serum albumin
Purification:	The antibody was purified by affinity chromatography and conjugated with APC under optimal conditions. The solution is free of unconjugated APC and unconjugated antibody.
Stability and Storage:	Product stable at 2 - 8°C when stored undiluted. Do not freeze. Protect product from prolonged exposure to light. For product expiry date, please contact <a href="mailto:techsupport@stemcell.com">techsupport@stemcell.com</a> .
Directions for Use:	For flow cytometry the suggested use of this antibody is 5 µL per 1 x 10 <sup>6</sup> cells in 100 µL volume or per 100 µL of whole blood. It is recommended that the antibody be titrated for optimal performance for each application.

## Data



(A) Flow cytometry analysis of human peripheral blood mononuclear cells (PBMCs) labeled with Anti-Human CD14 Antibody, Clone M5E2, APC (filled histogram) or Mouse IgG2a, kappa Isotype Control Antibody, Clone MOPC-173, APC (Catalog #60071AZ; solid line histogram).

(B) Flow cytometry analysis of human PBMCs processed with the EasySep™ Human Myeloid Positive Selection Kit and labeled with Anti-Human CD14 Antibody, Clone M5E2, APC. Histograms show labeling of PBMCs (Start) and isolated cells (Isolated). Labeling of start cells with Mouse IgG2a, kappa Isotype Control Antibody, Clone MOPC-173, APC is shown (solid line histogram).

(C) Flow cytometry analysis of human whole blood nucleated cells processed with the EasySep™ HLA Whole Blood CD33 Positive Selection Kit and labeled with Anti-Human CD14 Antibody, Clone M5E2, APC. Histograms show labeling of whole blood nucleated cells (Start) and isolated cells (Isolated). Labeling of start cells with Mouse IgG2a, kappa Isotype Control Antibody, Clone MOPC-173, APC is shown (solid line histogram).

## Related Products

For a complete list of antibodies, including other conjugates, sizes and clones, as well as related products available from STEMCELL Technologies, please visit our website at [www.stemcell.com/antibodies](http://www.stemcell.com/antibodies) or contact us at [techsupport@stemcell.com](mailto:techsupport@stemcell.com).

## References

- Santer DM et al. (2010) C1q deficiency leads to the defective suppression of IFN-alpha in response to nucleoprotein containing immune complexes. *J Immunol* 185(8): 4738–49.
- Iwamoto S et al. (2007) TNF-alpha drives human CD14+ monocytes to differentiate into CD70+ dendritic cells evoking Th1 and Th17 responses. *J Immunol* 179(3): 1449–57. (FC)
- Power CP et al. (2004) Bacterial lipoprotein delays apoptosis in human neutrophils through inhibition of caspase-3 activity: regulatory roles for CD14 and TLR-2. *J Immunol* 173(8): 5229–37. (Blocking/FA)
- Williams KC et al. (2001) Perivascular macrophages are the primary cell type productively infected by simian immunodeficiency virus in the brains of macaques: implications for the neuropathogenesis of AIDS. *J Exp Med* 193(8): 905–15. (IF)
- Yoshino N et al. (2000) Upgrading of flow cytometric analysis for absolute counts, cytokines and other antigenic molecules of cynomolgus monkeys (*Macaca fascicularis*) by using anti-human cross-reactive antibodies. *Exp Anim* 49(2): 97–110. (FC)
- Barclay AN et al. (Eds.). (1997) CD14. In: *The Leukocyte Antigens FactsBook*, Second Edition (pp. 169-70). New York: Academic Press.
- Schlossman SF et al. (Eds.). (1995) Binding heterogeneity within the CD32 panel of mAb. In: *Leucocyte Typing V* (pp. 832-35). New York: Oxford University Press.
- Knapp W et al. (Eds.). (1989) *Leucocyte Typing IV: White Cell Differentiation Antigens* (pp. 628-34). New York: Oxford University Press.

STEMCELL TECHNOLOGIES INC.'S QUALITY MANAGEMENT SYSTEM IS CERTIFIED TO ISO 13485. PRODUCTS ARE FOR RESEARCH USE ONLY AND NOT INTENDED FOR HUMAN OR ANIMAL DIAGNOSTIC OR THERAPEUTIC USES UNLESS OTHERWISE STATED.

Copyright © 2017 by STEMCELL Technologies Inc. All rights reserved including graphics and images. STEMCELL Technologies & Design, STEMCELL Shield Design, Scientists Helping Scientists and EasySep are trademarks of STEMCELL Technologies Canada Inc. All other trademarks are the property of their respective holders. Alexa Fluor® is a registered trademark of Life Technologies Corporation. This product is licensed for internal research use only and its sale is expressly conditioned on the buyer not using it for manufacturing, performing a service, or medical test, or otherwise generating revenue. For use other than research, contact Life Technologies Corporation, 5791 Van Allen Way, Carlsbad, CA 92008 USA or [outlicensing@lifetech.com](mailto:outlicensing@lifetech.com). While STEMCELL has made all reasonable efforts to ensure that the information provided by STEMCELL and its suppliers is correct, it makes no warranties or representations as to the accuracy or completeness of such information.