

Anti-Human SSEA-4 Antibody, Clone MC-813-70



Scientists Helping Scientists™ | WWW.STEMCELL.COM

TOLL FREE PHONE 1 800 667 0322 • PHONE +1 604 877 0713

INFO@STEMCELL.COM • TECHSUPPORT@STEMCELL.COM

FOR GLOBAL CONTACT DETAILS VISIT OUR WEBSITE

Antibodies

Mouse monoclonal IgG3 antibody
against human, mouse, rat SSEA-4,
unconjugated

Catalog #60062

100 µg 0.5 mg/mL

Product Description

The MC-813-70 antibody reacts with stage-specific embryonic antigen-4 (SSEA-4), a glycolipid carbohydrate antigen expressed on the surface of human embryonal carcinoma (EC), embryonic germ (EG), undifferentiated embryonic stem (ES), and induced pluripotent stem (iPS) cells, a subset of mesenchymal stem cells, and rhesus monkey ES cell lines. No immunoreactivity is evident with undifferentiated mouse EC, EG, ES, and iPS cells. Expression of SSEA-4 is down-regulated following differentiation of human EC, ES, and iPS cells. In contrast, the differentiation of mouse EC, ES, or iPS cells may be accompanied by an increase in SSEA-4 expression.

| | |
|----------------------|--|
| Target Antigen Name: | SSEA-4 |
| Alternative Names: | Stage-specific embryonic antigen-4 |
| Gene ID: | 330401 |
| Species Reactivity: | Human, Mouse, Rat, Rhesus, Cat, Chicken, Dog, Rabbit |
| Host Species: | Mouse |
| Clonality: | Monoclonal |
| Clone: | MC-813-70 |
| Isotype: | IgG3, kappa |
| Immunogen: | Human embryonal carcinoma cell line 2102Ep |
| Conjugate: | Unconjugated |

Applications

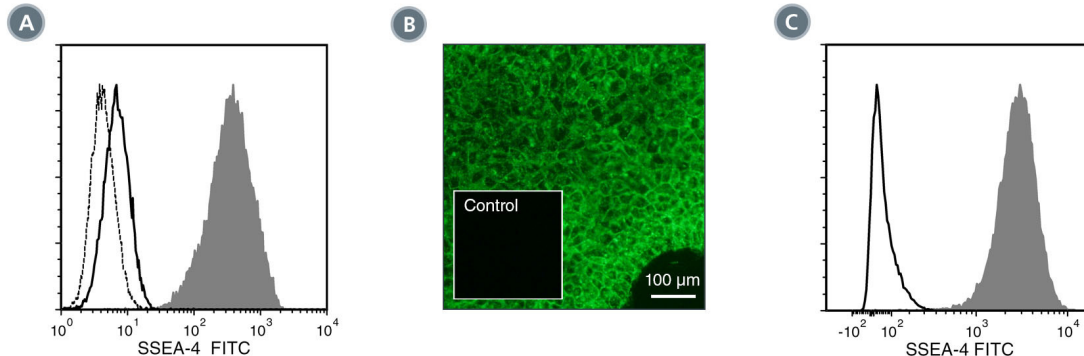
| | |
|-----------------------|--|
| Verified: | CellSep, FC, ICC, IF |
| Reported: | ELISA, FC, ICC, IF, IHC |
| Special Applications: | This antibody clone has been verified for labeling human ES and iPS cells grown in TeSR™-E8™ (Catalog #05940), mTeSR™1 (Catalog #85850), and TeSR™2 (Catalog #05860), and for purity assessments of cells isolated with EasySep™ kits, including EasySep™ Human ES/iPS Cell TRA-1-60 Positive Selection Kit (Catalog #18166) and EasySep™ hESC/hiPSC SSEA-4 Positive Selection Kit (Catalog #18165; partial blocking may be observed). |

Abbreviations: CellSep: Cell separation; ChIP: Chromatin immunoprecipitation; FA: Functional assay; FACS: Fluorescence-activated cell sorting; FC: Flow cytometry; ICC: Immunocytochemistry; IF: Immunofluorescence microscopy; IHC: Immunohistochemistry; IP: Immunoprecipitation; RIA: Radioimmunoassay; WB: Western blotting

Properties

| | |
|------------------------|---|
| Formulation: | Phosphate-buffered saline |
| Purification: | The antibody was purified by affinity chromatography. |
| Stability and Storage: | Product stable at 2 - 8°C when stored undiluted. Do not freeze. Addition of 0.1% sodium azide (final) is recommended once the vial has been opened. For product expiry date, please contact techsupport@stemcell.com. |
| Directions for Use: | The suggested use of this antibody is: FC, ≤ 0.5 µg per 1 × 10 ⁶ cells in 100 µL; ICC/IF, ≤ 5 µg/mL. It is recommended that the antibody be titrated for optimal performance for each application. |

Data



(A) Flow cytometry analysis of human ES cells (filled histogram) or HT1080 fibrosarcoma cells (negative control; dashed line histogram) labeled with Anti-Human SSEA-4 Antibody, Clone MC-813-70, followed by Goat Anti-Mouse IgG (H+L) Antibody, Polyclonal, FITC (Catalog #60138FI). Labeling of human ES cells with Mouse IgG3, kappa Isotype Control Antibody, Clone MG3-35 (Catalog #60073), followed by Goat Anti-Mouse IgG (H+L) Antibody, Polyclonal, FITC is shown (solid line histogram).

(B) Human ES cells were cultured in mTeSR™1 on Corning® Matrigel®-coated glass coverslips, then fixed and labeled with Anti-Human SSEA-4 Antibody, Clone MC-813-70, followed by Goat Anti-Mouse IgG (H+L) Antibody, Polyclonal, FITC. Inset shows cells labeled with Mouse IgG3, kappa Isotype Control Antibody, Clone MG3-35.

(C) Flow cytometry analysis of human iPS cells labeled with Anti-Human SSEA-4 Antibody, Clone MC-813-70, followed by Goat Anti-Mouse IgG (H+L) Antibody, Polyclonal, FITC (filled histogram), or Mouse IgG3, kappa Isotype Control Antibody, Clone MG3-35, followed by Goat Anti-Mouse IgG (H+L) Antibody, Polyclonal, FITC (solid line histogram).

Related Products

For a complete list of antibodies, including other conjugates, sizes and clones, as well as related products available from STEMCELL Technologies, please visit our website at www.stemcell.com/antibodies or contact us at techsupport@stemcell.com.

References

- Miyoshi N et al. (2010) Defined factors induce reprogramming of gastrointestinal cancer cells. *Proc Natl Acad Sci USA* 107(1): 40–5. (IF)
- Chan EM et al. (2009) Live cell imaging distinguishes bona fide human iPS cells from partially reprogrammed cells. *Nat Biotechnol* 27(11): 1033–7.
- King FW et al. (2009) Subpopulations of human embryonic stem cells with distinct tissue-specific fates can be selected from pluripotent cultures. *Stem Cells Dev* 18(10): 1441–50. (FC)
- Kuai XL et al. (2009) Differentiation of nonhuman primate embryonic stem cells along neural lineages. *Differentiation* 77(3): 229–38. (IF)
- Hockemeyer D et al. (2008) A drug-inducible system for direct reprogramming of human somatic cells to pluripotency. *Cell Stem Cell* 3(3): 346–53.
- Ueda S et al. (2008) Establishment of rat embryonic stem cells and making of chimera rats. *PLoS One* 3(7): e2800. (IF)
- Henderson JK et al. (2002) Preimplantation human embryos and embryonic stem cells show comparable expression of stage-specific embryonic antigens. *Stem Cells* 20(4): 329–37. (FC, IF)
- Thomson JA et al. (1995) Isolation of a primate embryonic stem cell line. *Proc Natl Acad Sci USA* 92(17): 7844–8. (IHC)
- Kannagi R et al. (1983) Stage-specific embryonic antigens (SSEA-3 and -4) are epitopes of a unique globo-series ganglioside isolated from human teratocarcinoma cells. *EMBO J* 2(12): 2355–61.

STEMCELL TECHNOLOGIES INC.'S QUALITY MANAGEMENT SYSTEM IS CERTIFIED TO ISO 13485. PRODUCTS ARE FOR RESEARCH USE ONLY AND NOT INTENDED FOR HUMAN OR ANIMAL DIAGNOSTIC OR THERAPEUTIC USES UNLESS OTHERWISE STATED.

Copyright © 2018 by STEMCELL Technologies Inc. All rights reserved including graphics and images. STEMCELL Technologies & Design, STEMCELL Shield Design, Scientists Helping Scientists, and EasySep are trademarks of STEMCELL Technologies Canada Inc. E8, mTeSR, and TeSR are trademarks of WARF. Corning and Matrigel are registered trademarks of Corning Incorporated. All other trademarks are the property of their respective holders. Alexa Fluor is a registered trademark of Life Technologies Corporation. Antibodies conjugated to Alexa Fluor® are licensed for internal research use only and sale is expressly conditioned on the buyer not using the antibody for manufacturing, performing a service or medical test, or otherwise generating revenue. For use other than research, contact Life Technologies Corporation, 5791 Van Allen Way, Carlsbad, CA 92008 USA or outlicensing@lifetech.com. While STEMCELL has made all reasonable efforts to ensure that the information provided by STEMCELL and its suppliers is correct, it makes no warranties or representations as to the accuracy or completeness of such information.