

Anti-Mouse EPCR Antibody, Clone RMEPCR1560 (1560), PE



Scientists Helping Scientists™ | WWW.STEMCELL.COM

TOLL FREE PHONE 1 800 667 0322 • PHONE +1 604 877 0713

INFO@STEMCELL.COM • TECHSUPPORT@STEMCELL.COM

FOR GLOBAL CONTACT DETAILS VISIT OUR WEBSITE

Antibodies

Rat monoclonal IgG2b antibody
against mouse EPCR (CD201), PE-
conjugated

Catalog #60038PE	100 µg	0.2 mg/mL
#60038PE.1	25 µg	0.2 mg/mL

Product Description

The RMEPCR1560 (1560) antibody reacts with the endothelial protein C receptor (EPCR or CD201), an ~25 kDa type I transmembrane glycoprotein expressed by endothelial cells, subsets of hematopoietic stem cells (HSCs) and dendritic cells, and several malignant cell lines. It is also found in a soluble form in plasma. EPCR exhibits homology with the MHC class 1/CD1 protein family. EPCR binds protein C and activated protein C, thus augmenting protein C activation by the thrombin-thrombomodulin complex and regulating blood coagulation and inflammation. EPCR protein expression has been detected on ~1.5% of mouse bone marrow cells. Purified EPCR+ cells are highly enriched for HSC activity, as evidenced by high in vivo repopulation activity. Moreover, EPCR expression is associated with the stem cell activity of bone marrow cell populations isolated using conventional markers, indicating the usefulness of EPCR as a single marker for the identification of mouse HSCs.

Target Antigen Name:	EPCR (CD201)
Alternative Names:	Activated protein C receptor, APC receptor, CCD41, CD201, endothelial protein C receptor, PROCR, protein C receptor
Gene ID:	19124
Species Reactivity:	Mouse
Host Species:	Rat
Clonality:	Monoclonal
Clone:	RMEPCR1560 (1560)
Isotype:	IgG2b, kappa
Immunogen:	Soluble form of mouse EPCR protein
Conjugate:	PE

Applications

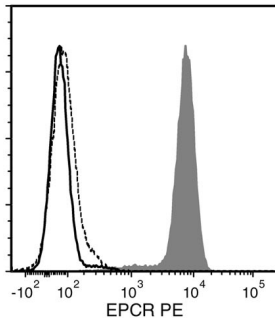
Verified:	CellSep, FC
Reported:	FC

Abbreviations: CellSep: Cell separation; ChIP: Chromatin immunoprecipitation; FA: Functional assay; FACS: Fluorescence-activated cell sorting; FC: Flow cytometry; ICC: Immunocytochemistry; IF: Immunofluorescence microscopy; IHC: Immunohistochemistry; IP: Immunoprecipitation; RIA: Radioimmunoassay; WB: Western blotting

Properties

Formulation:	Phosphate-buffered saline containing < 0.1% (w/v) sodium azide and < 0.1% (w/v) bovine serum albumin
Purification:	The antibody was purified by affinity chromatography and conjugated with PE under optimal conditions.
Stability and Storage:	Product stable at 2 - 8°C when stored undiluted. Do not freeze. Protect product from prolonged exposure to light. For product expiry date, please contact techsupport@stemcell.com .
Directions for Use:	For flow cytometry the suggested use of this antibody is 0.1 µg per 1 x 10 ⁶ cells in 100 µL. It is recommended that the antibody be titrated for optimal performance for each application.

Data



Flow cytometry analysis of HEK-293 mEPCR-transfected cells (filled histogram) or non-transfected HEK-293 cells (negative control; dashed line histogram), labeled with Anti-Mouse EPCR Antibody, Clone RMEPCR1560 (1560), PE. Labeling of HEK-293 mEPCR-transfected cells with a rat IgG2b, kappa PE isotype control antibody is shown (solid line histogram).

Related Products

For a complete list of antibodies, including other conjugates, sizes and clones, as well as related products available from STEMCELL Technologies, please visit our website at www.stemcell.com/antibodies or contact us at techsupport@stemcell.com.

References

1. Kirschner K et al. (2017) Proliferation drives aging-related functional decline in a subpopulation of the hematopoietic stem cell compartment. *Cell Rep* 19(8): 1503–11. (FACS, FC)
2. Sundaram J et al. (2014) Factor VIIa binding to endothelial cell protein C receptor protects vascular barrier integrity in vivo. *J Thromb Haemost* 12(5): 690–700. (Blocking, FA)
3. Kent DG et al. (2013) Self-renewal of single mouse hematopoietic stem cells is reduced by JAK2V617F without compromising progenitor cell expansion. *PLoS Biol* 11(6): e1001576. (FACS, FC)
4. Mayle A et al. (2013) Flow cytometry analysis of murine hematopoietic stem cells. *Cytom Part A* 83A(1): 27–37. (FACS, FC)
5. Gasparetto M et al. (2012) Aldehyde dehydrogenases are regulators of hematopoietic stem cell numbers and B-cell development. *Exp Hematol* 40(4): 318–29.e2. (FC)
6. Balazs AB et al. (2006) Endothelial protein C receptor (CD201) explicitly identifies hematopoietic stem cells in murine bone marrow. *Blood* 107(6): 2317–21. (FA, FC)
7. Akashi K et al. (2003) Transcriptional accessibility for genes of multiple tissues and hematopoietic lineages is hierarchically controlled during early hematopoiesis. *Blood* 101(2): 383–9.
8. Crawley JTB et al. (2002) Distribution of endothelial cell protein C/activated protein C receptor (EPCR) during mouse embryo development. *Thromb Haemost* 88(2): 259–66. (IHC)
9. Gu J-M et al. (2002) Disruption of the endothelial cell protein C receptor gene in mice causes placental thrombosis and early embryonic lethality. *J Biol Chem* 277(45): 43335–43. (IHC)
10. Ramalho-Santos M et al. (2002) "Stemness": transcriptional profiling of embryonic and adult stem cells. *Science* 298(5593): 597–600.
11. Esmon CT. (2001) The normal role of activated protein C in maintaining homeostasis and its relevance to critical illness. *Crit Care* 5(2): S7–12.
12. Liaw PC et al. (2000) Mechanisms by which soluble endothelial cell protein C receptor modulates protein C and activated protein C function. *J Biol Chem* 275(8): 5447–52.

STEMCELL TECHNOLOGIES INC.'S QUALITY MANAGEMENT SYSTEM IS CERTIFIED TO ISO 13485. PRODUCTS ARE FOR RESEARCH USE ONLY AND NOT INTENDED FOR HUMAN OR ANIMAL DIAGNOSTIC OR THERAPEUTIC USES UNLESS OTHERWISE STATED.

Copyright © 2017 by STEMCELL Technologies Inc. All rights reserved including graphics and images. STEMCELL Technologies & Design, STEMCELL Shield Design, and Scientists Helping Scientists are trademarks of STEMCELL Technologies Canada Inc. All other trademarks are the property of their respective holders. While STEMCELL has made all reasonable efforts to ensure that the information provided by STEMCELL and its suppliers is correct, it makes no warranties or representations as to the accuracy or completeness of such information.