

## Antibodies

### Mouse IgM, kappa Isotype Control Antibody, Clone MM-30, PE

Mouse monoclonal IgM, kappa isotype  
control antibody, PE-conjugated

Catalog #60069PE  
#60069PE.1

25 Tests    5 µL/test  
25 µg    0.2 mg/mL



Scientists Helping Scientists™ | [WWW.STEMCELL.COM](http://WWW.STEMCELL.COM)

TOLL FREE PHONE 1 800 667 0322 • PHONE +1 604 877 0713

[INFO@STEMCELL.COM](mailto:INFO@STEMCELL.COM) • [TECHSUPPORT@STEMCELL.COM](mailto:TECHSUPPORT@STEMCELL.COM)

FOR GLOBAL CONTACT DETAILS VISIT OUR WEBSITE

## Product Description

The MM-30 antibody (IgM, kappa) is suitable for use as an isotype-matched control antibody in several applications to estimate the degree of non-specific binding by an antigen-specific antibody. Ideally, the isotype control should have the same subclass of heavy chain (IgA, IgD, IgE, IgG, or IgM) and light chain (kappa or lambda) as the specific antibody being used. If a conjugated antibody is used, an isotype control conjugated to the same molecule (e.g. fluorochrome) should be chosen. The use of an appropriate isotype control helps confirm the specificity of the antigen-specific antibody and indicates non-specific binding that may result from binding to Fc receptors or other cell components. The MM-30 antibody reportedly recognizes keyhole limpet hemocyanin.

Target Antigen Name:	IgM Isotype Control
Alternative Names:	Not applicable
Gene ID:	Not applicable
Species Reactivity:	Keyhole Limpet
Host Species:	Mouse
Clonality:	Monoclonal
Clone:	MM-30
Isotype:	IgM, kappa
Immunogen:	Trinitrophenol + KLH
Conjugate:	PE

## Applications

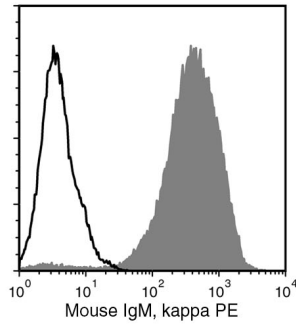
Verified:	FC, ICC, IF
Reported:	FC, ICC, IF
Special Applications:	This antibody clone has been verified for use as an isotype control antibody for assessing non-specific binding to cells in flow cytometry and immunofluorescence microscopy applications (surface and intracellular staining).

Abbreviations: CellSep: Cell separation; ChIP: Chromatin immunoprecipitation; FA: Functional assay; FACS: Fluorescence activated cell sorting; FC: Flow cytometry; ICC: Immunocytochemistry; IF: Immunofluorescence microscopy; IHC: Immunohistochemistry; IP: Immunoprecipitation; RIA: Radioimmunoassay; WB: Western blotting

## Properties

Formulation:	Phosphate-buffered solution, pH 7.2, containing 0.09% sodium azide, may contain carrier protein/stabilizer
Purification:	The antibody was conjugated with PE under optimal conditions, and is at > 85% purity. The solution is free of unconjugated PE and unconjugated antibody.
Stability and Storage:	Product stable at 2 - 8°C when stored undiluted. Do not freeze. Protect product from prolonged exposure to light. For product expiry date, please contact <a href="mailto:techsupport@stemcell.com">techsupport@stemcell.com</a> .
Directions for Use:	The suggested use of this antibody is at concentrations comparable to those of the specific antibody of interest.

## Data



Flow cytometry analysis of human H1 embryonic stem (ES) cells labeled with Mouse IgM, kappa Isotype Control Antibody, Clone MM-30, PE (solid line histogram), or a mouse IgM, kappa positive control antibody (Anti-Human TRA-1-60 Antibody, Clone TRA-1-60R, PE; Catalog #60064PE) (filled histogram).

## Related Products

For a complete list of antibodies, including other conjugates, sizes and clones, as well as related products available from STEMCELL Technologies, please visit our website at [www.stemcell.com/antibodies](http://www.stemcell.com/antibodies) or contact us at [techsupport@stemcell.com](mailto:techsupport@stemcell.com).

STEMCELL TECHNOLOGIES INC.'S QUALITY MANAGEMENT SYSTEM IS CERTIFIED TO ISO 13485. PRODUCTS ARE FOR RESEARCH USE ONLY AND NOT INTENDED FOR HUMAN OR ANIMAL DIAGNOSTIC OR THERAPEUTIC USES UNLESS OTHERWISE STATED.

Copyright © 2016 by STEMCELL Technologies Inc. All rights reserved including graphics and images. STEMCELL Technologies & Design, STEMCELL Shield Design and Scientists Helping Scientists are trademarks of STEMCELL Technologies Inc. mTeSR is a trademark of WARF. Matrigel is a trademark of Corning® Incorporated. All other trademarks are the property of their respective holders. Alexa Fluor® is a registered trademark of Life Technologies Corporation. This product is licensed for internal research use only and its sale is expressly conditioned on the buyer not using it for manufacturing, performing a service, or medical test, or otherwise generating revenue. For use other than research, contact Life Technologies Corporation, 5791 Van Allen Way, Carlsbad, CA 92008 USA or [outlicensing@lifetech.com](mailto:outlicensing@lifetech.com). While STEMCELL has made all reasonable efforts to ensure that the information provided by STEMCELL and its suppliers is correct, it makes no warranties or representations as to the accuracy or completeness of such information.