

Anti-Human SSEA-5 Antibody, Clone 8e11, Alexa Fluor® 488



Scientists Helping Scientists™ | WWW.STEMCELL.COM

TOLL FREE PHONE 1 800 667 0322 • PHONE +1 604 877 0713

INFO@STEMCELL.COM • TECHSUPPORT@STEMCELL.COM

FOR GLOBAL CONTACT DETAILS VISIT OUR WEBSITE

Antibodies

Mouse monoclonal IgG1 antibody
against human SSEA-5, Alexa Fluor®
488-conjugated

Catalog #60063AD
#60063AD.1

100 Tests 5 µL/test
25 Tests 5 µL/test

Product Description

The 8e11 antibody reacts with stage-specific embryonic antigen-5 (SSEA-5), a terminal H type-1 glycan (Fuc1-2Galβ1-3GlcNAcβ1) expressed on the surface of cells in the inner cell mass of the human blastocyst during embryogenesis, and on undifferentiated human embryonic stem (ES) and induced pluripotent stem (iPS) cells. Expression of SSEA-5 is rapidly down-regulated upon cellular differentiation. The 8e11 antibody can be used in conjunction with other pluripotency surface markers such as CD9 and CD90, or CD50 and CD200, to sort and remove undifferentiated teratoma-forming cells from incompletely differentiated stem cell cultures.

Target Antigen Name:	SSEA-5
Alternative Names:	Stage-specific embryonic antigen-5
Gene ID:	Not applicable
Species Reactivity:	Human
Host Species:	Mouse
Clonality:	Monoclonal
Clone:	8e11
Isotype:	IgG1, kappa
Immunogen:	Undifferentiated H9 human embryonic stem cells
Conjugate:	Alexa Fluor® 488

Applications

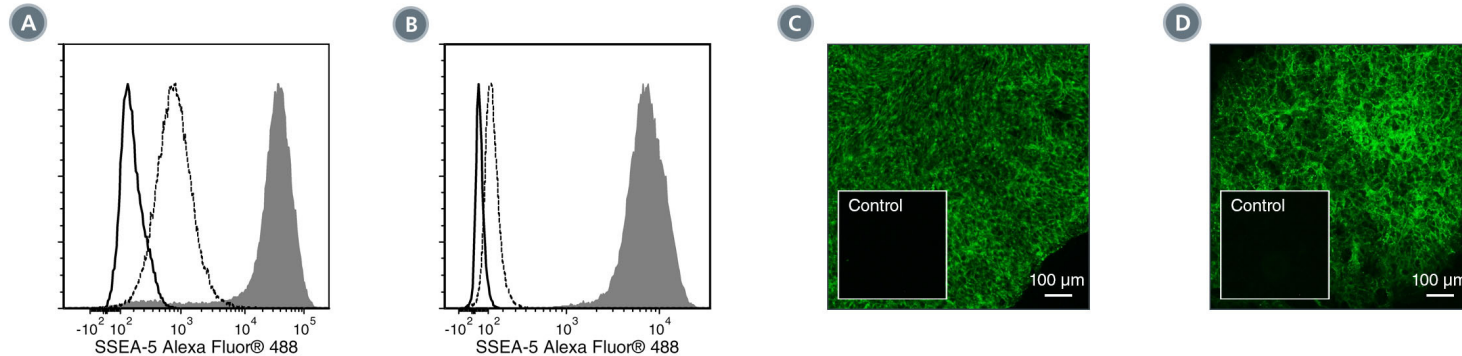
Verified:	FC, ICC, IF
Reported:	FC, IHC
Special Applications:	This antibody clone has been verified for labeling human ES and iPS cells grown in TeSR™-E8™ (Catalog #05940), mTeSR™1 (Catalog #05850) and TeSR™2 (Catalog #05860), and for purity assessments of cells isolated with EasySep™ kits, including EasySep™ Human ES/iPS Cell TRA-1-60 Positive Selection Kit (Catalog #18166).

Abbreviations: CellSep: Cell separation; ChIP: Chromatin immunoprecipitation; FA: Functional assay; FACS: Fluorescence activated cell sorting; FC: Flow cytometry; ICC: Immunocytochemistry; IF: Immunofluorescence microscopy; IHC: Immunohistochemistry; IP: Immunoprecipitation; RIA: Radioimmunoassay; WB: Western blotting

Properties

Formulation:	Phosphate-buffered solution, pH 7.2, containing 0.09% sodium azide and 0.2% (w/v) bovine serum albumin
Purification:	The antibody was purified by affinity chromatography and conjugated with Alexa Fluor® 488 under optimal conditions. The solution is free of unconjugated Alexa Fluor® 488.
Stability and Storage:	Product stable at 2 - 8°C when stored undiluted. Do not freeze. Protect product from prolonged exposure to light. For product expiry date, please contact techsupport@stemcell.com .
Directions for Use:	The suggested use of this antibody is: FC, 5 µL per 1 x 10 ⁶ cells in 100 µL volume; ICC/IF, 100X dilution. It is recommended that the antibody be titrated for optimal performance for each application.

Data



(A) Flow cytometry analysis of human ES cells (filled histogram) or HT1080 fibrosarcoma cells (negative control; dashed line histogram) labeled with Anti-Human SSEA-5 Antibody, Clone 8e11, Alexa Fluor® 488. Labeling of human ES cells with a mouse IgG1, kappa Alexa Fluor® 488 isotype control antibody is shown (solid line histogram).

(B) Flow cytometry analysis of human iPS cells (filled histogram) or HT1080 fibrosarcoma cells (negative control; dashed line histogram) labeled with Anti-Human SSEA-5 Antibody, Clone 8e11, Alexa Fluor® 488. Labeling of human iPS cells with a mouse IgG1, kappa Alexa Fluor® 488 isotype control antibody is shown (solid line histogram).

(C) Human ES cells were cultured in mTeSR™1 on Corning® Matrigel®-coated glass coverslips, then fixed and labeled with Anti-Human SSEA-5 Antibody, Clone 8e11, Alexa Fluor® 488. Inset shows labeling of human ES cells with a mouse IgG1, kappa Alexa Fluor® 488 isotype control antibody.

(D) Human iPS cells were cultured in mTeSR™1 on Corning® Matrigel®-coated glass coverslips, then fixed and stained with Anti-Human SSEA-5 Antibody, Clone 8e11, Alexa Fluor® 488. Inset shows labeling of human iPS cells with a mouse IgG1, kappa Alexa Fluor® 488 isotype control antibody.

Related Products

For a complete list of antibodies, including other conjugates, sizes and clones, as well as related products available from STEMCELL Technologies, please visit our website at www.stemcell.com/antibodies or contact us at techsupport@stemcell.com.

References

1. Andrews PW. (2011) Toward safer regenerative medicine. *Nat Biotechnol* 29(9): 803–5.
2. Itskovitz-Eldor J. (2011) A panel of glycan cell surface markers define pluripotency state and promote safer cell-based therapies. *Cell Stem Cell* 9(4): 291–2.
3. Tang C et al. (2011) An antibody against SSEA-5 glycan on human pluripotent stem cells enables removal of teratoma-forming cells. *Nat Biotechnol* 29(9): 829–34. (Depletion, FC, IF, IHC, IP)

STEMCELL TECHNOLOGIES INC.'S QUALITY MANAGEMENT SYSTEM IS CERTIFIED TO ISO 13485. PRODUCTS ARE FOR RESEARCH USE ONLY AND NOT INTENDED FOR HUMAN OR ANIMAL DIAGNOSTIC OR THERAPEUTIC USES UNLESS OTHERWISE STATED.

Copyright © 2017 by STEMCELL Technologies Inc. All rights reserved including graphics and images. STEMCELL Technologies & Design, STEMCELL Shield Design, Scientists Helping Scientists, and EasySep are trademarks of STEMCELL Technologies Canada Inc. E8, TeSR, and mTeSR are trademarks of WARF. Corning and Matrigel are trademarks of Corning Incorporated. All other trademarks are the property of their respective holders. Alexa Fluor® is a registered trademark of Life Technologies Corporation. This product is licensed for internal research use only and its sale is expressly conditioned on the buyer not using it for manufacturing, performing a service, or medical test, or otherwise generating revenue. For use other than research, contact Life Technologies Corporation, 5791 Van Allen Way, Carlsbad, CA 92008 USA or outlicensing@lifetech.com. While STEMCELL has made all reasonable efforts to ensure that the information provided by STEMCELL and its suppliers is correct, it makes no warranties or representations as to the accuracy or completeness of such information.