

## Anti-Mouse Sca1 Antibody, Clone E13-161.7, PE



Scientists Helping Scientists™ | [WWW.STEMCELL.COM](http://WWW.STEMCELL.COM)

TOLL FREE PHONE 1 800 667 0322 • PHONE +1 604 877 0713

[INFO@STEMCELL.COM](mailto:INFO@STEMCELL.COM) • [TECHSUPPORT@STEMCELL.COM](mailto:TECHSUPPORT@STEMCELL.COM)

FOR GLOBAL CONTACT DETAILS VISIT OUR WEBSITE

## Antibodies

Rat monoclonal IgG2a antibody  
against mouse Sca1 (Ly-6A/E), PE-  
conjugated

Catalog #60032PE  
#60032PE.1

200 µg 0.2 mg/mL  
50 µg 0.2 mg/mL

## Product Description

The E13-161.7 antibody reacts with Sca1 (stem cell antigen-1 or Ly-6A/E), an 18 kDa GPI-linked protein belonging to the lymphocyte activation protein-6 (Ly-6) family. Sca1 is expressed on the surface of hematopoietic stem and progenitor cells, myeloid cells, and peripheral B and T lymphocytes. Sca1 is expressed by mice with either the Ly-6.1 or Ly-6.2 allotypes, but the pattern of expression differs in the circulating cell population according to the allotype. Ly-6.2 strains (e.g. AKR, C57BL, C57BR, C57L, DBA/2, PL, SJL, SWR, 129) possess relatively high numbers of Sca1+ resting lymphocytes compared to Ly-6.1 strains (e.g. A, BALB/c, CBA, C3H/He, DBA/1, NZB). Sca1 expression levels are strongly upregulated in all strains upon cellular activation. Sca1 is involved in the regulation of T and B cell responses and is believed to play roles in the differentiation, proliferation, and survival of a variety of stem cells. Sca1 has emerged as a phenotypic marker of choice for identifying and isolating hematopoietic stem and progenitor cells.

Target Antigen Name:	Sca1 (Ly-6A/E)
Alternative Names:	Ly-6A/E, Sca-1
Gene ID:	110454
Species Reactivity:	Mouse
Host Species:	Rat
Clonality:	Monoclonal
Clone:	E13-161.7
Isotype:	IgG2a, kappa
Immunogen:	Mouse pre-T cells
Conjugate:	PE

## Applications

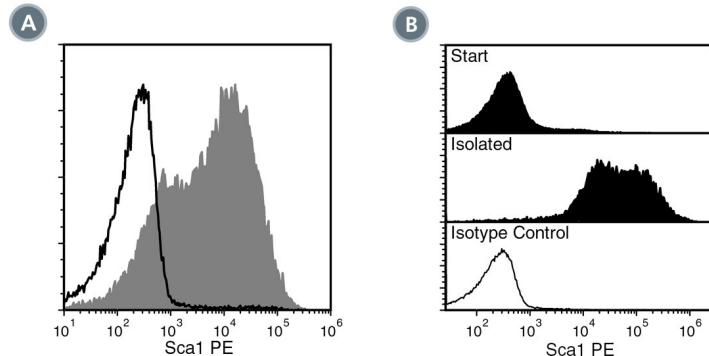
Verified:	CellSep, FC
Reported:	FC
Special Applications:	This antibody clone has been verified for purity assessments of cells isolated with EasySep™ kits, including EasySep™ Mouse SCA1 Biotin Positive Selection Kit (Catalog #18856).

Abbreviations: CellSep: Cell separation; ChIP: Chromatin immunoprecipitation; FA: Functional assay; FACS: Fluorescence-activated cell sorting; FC: Flow cytometry; ICC: Immunocytochemistry; IF: Immunofluorescence microscopy; IHC: Immunohistochemistry; IP: Immunoprecipitation; RIA: Radioimmunoassay; WB: Western blotting

## Properties

Formulation:	Phosphate-buffered solution, pH 7.2, containing 0.09% sodium azide
Purification:	The antibody was purified by affinity chromatography and conjugated with PE under optimal conditions. The solution is free of unconjugated PE and unconjugated antibody.
Stability and Storage:	Product stable at 2 - 8°C when stored undiluted. Do not freeze. Protect product from prolonged exposure to light. For product expiry date, please contact <a href="mailto:techsupport@stemcell.com">techsupport@stemcell.com</a> .
Directions for Use:	For flow cytometry the suggested use of this antibody is $\leq 0.5 \mu\text{g}$ per $1 \times 10^6$ cells in 100 µL. It is recommended that the antibody be titrated for optimal performance for each application.

## Data



(A) Flow cytometry analysis of C57BL/6 mouse splenocytes labeled with Anti-Mouse Sca1 Antibody, Clone E13-161.7, PE (filled histogram) or a rat IgG2a, kappa PE isotype control antibody (solid line histogram).

(B) Flow cytometry analysis of C57BL/6 mouse bone marrow cells processed with the EasySep™ Mouse PE Positive Selection Kit (Catalog #18554), and labeled with Anti-Mouse Sca1 Antibody, Clone E13-161.7, PE. Histograms show labeling of bone marrow (Start) and isolated cells (Isolated). Labeling of start cells with a rat IgG2a, kappa PE isotype control antibody is shown (solid line histogram).

## Related Products

For a complete list of antibodies, including other conjugates, sizes and clones, as well as related products available from STEMCELL Technologies, please visit our website at [www.stemcell.com/antibodies](http://www.stemcell.com/antibodies) or contact us at [techsupport@stemcell.com](mailto:techsupport@stemcell.com).

## References

1. Treviño-Villarreal JH et al. (2011) Host-derived pericytes and Sca-1+ cells predominate in the MART-1- stroma fraction of experimentally induced melanoma. *J Histochem Cytochem* 59(12): 1060–75. (FC, IHC)
2. Rosas M et al. (2010) The myeloid 7/4-antigen defines recently generated inflammatory macrophages and is synonymous with Ly-6B. *J Leukoc Biol* 88(1): 169–80.
3. van Bragt MPA et al. (2005) LY6A/E (SCA-1) expression in the mouse testis. *Biol Reprod* 73(4): 634–8. (IF, IHC)
4. van de Rijn M et al. (1989) Mouse hematopoietic stem-cell antigen Sca-1 is a member of the Ly-6 antigen family. *Proc Natl Acad Sci USA* 86(12): 4634–8. (FC, IHC, IP)
5. Spangrude GJ et al. (1988) The stem cell antigens Sca-1 and Sca-2 subdivide thymic and peripheral T lymphocytes into unique subsets. *J Immunol* 141(11): 3697–707. (IHC)
6. Aihara Y et al. (1986) An attempt to produce “pre-T” cell hybridomas and to identify their antigens. *Eur J Immunol* 16(11): 1391–9. (FA)
7. Malek TR et al. (1986) Role of Ly-6 in lymphocyte activation. II. Induction of T cell activation by monoclonal anti-Ly-6 antibodies. *J Exp Med* 164(3): 709–22.
8. Ortega G et al. (1986) Role of Ly-6 in lymphocyte activation. I. Characterization of a monoclonal antibody to a nonpolymorphic Ly-6 specificity. *J Immunol* 137(10): 3240–6.

STEMCELL TECHNOLOGIES INC.'S QUALITY MANAGEMENT SYSTEM IS CERTIFIED TO ISO 13485. PRODUCTS ARE FOR RESEARCH USE ONLY AND NOT INTENDED FOR HUMAN OR ANIMAL DIAGNOSTIC OR THERAPEUTIC USES UNLESS OTHERWISE STATED.

Copyright © 2017 by STEMCELL Technologies Inc. All rights reserved including graphics and images. STEMCELL Technologies & Design, STEMCELL Shield Design, Scientists Helping Scientists and EasySep are trademarks of STEMCELL Technologies Canada Inc. All other trademarks are the property of their respective holders. Alexa Fluor® is a registered trademark of Life Technologies Corporation. Antibodies conjugated to Alexa Fluor® are licensed for internal research use only and sale is expressly conditioned on the buyer not using the antibody for manufacturing, performing a service or medical test, or otherwise generating revenue. For use other than research, contact Life Technologies Corporation, 5791 Van Allen Way, Carlsbad, CA 92008 USA or [outlicensing@lifetech.com](mailto:outlicensing@lifetech.com). While STEMCELL has made all reasonable efforts to ensure that the information provided by STEMCELL and its suppliers is correct, it makes no warranties or representations as to the accuracy or completeness of such information.