

## Anti-Human CD2 Antibody, Clone RPA-2.10, PE



Scientists Helping Scientists™ | [WWW.STEMCELL.COM](http://WWW.STEMCELL.COM)

TOLL FREE PHONE 1 800 667 0322 • PHONE +1 604 877 0713

[INFO@STEMCELL.COM](mailto:INFO@STEMCELL.COM) • [TECHSUPPORT@STEMCELL.COM](mailto:TECHSUPPORT@STEMCELL.COM)

FOR GLOBAL CONTACT DETAILS VISIT OUR WEBSITE

## Antibodies

Mouse monoclonal IgG1 antibody  
against human, rhesus, cynomolgus  
CD2, PE-conjugated

Catalog #60007PE  
#60007PE.1

100 Tests 5 µL/test  
25 Tests 5 µL/test

## Product Description

The RPA-2.10 antibody reacts with CD2, an ~50 kDa type I transmembrane glycoprotein and a member of the immunoglobulin (Ig) superfamily; two Ig-like domains are located in its extracellular portion. CD2 is broadly expressed on peripheral T and NK cells, dendritic cells, erythrocytes, most thymic T cells, subsets of thymic B cells, and on the endothelium. CD2 expression appears early during T cell differentiation. Aberrant expression has been observed in some lymphomas and myeloid leukemias. CD2 is critically important for T cell activation and signaling, as well as lymphocyte adhesion. The primary ligand for CD2 is CD58 (LFA-3) located on antigen-presenting cells, with additional ligands comprising CD15 (SSEA-1), CD48, and CD59. Notably, the RPA-2.10 antibody blocks the mixed lymphocyte reaction.

Target Antigen Name:	CD2
Alternative Names:	LFA-2, SRBC-R, T11
Gene ID:	914
Species Reactivity:	Human, Rhesus, Cynomolgus, Baboon, Chimpanzee, Capuchin Monkey, Pigtailed Macaque, Squirrel Monkey, Pig
Host Species:	Mouse
Clonality:	Monoclonal
Clone:	RPA-2.10
Isotype:	IgG1, kappa
Immunogen:	Human CD2 recombinant protein
Conjugate:	PE (Phycoerythrin)

## Applications

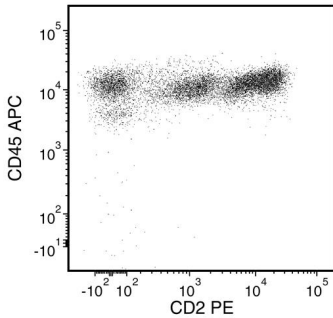
Verified:	CellSep, FC
Reported:	FC
Special Applications:	This antibody clone has been verified for purity assessments of cells isolated with EasySep™ kits, including EasySep™ HLA Chimerism Whole Blood CD3 Positive Selection Kit (Catalog #17871).

Abbreviations: CellSep: Cell separation; ChIP: Chromatin immunoprecipitation; FA: Functional assay; FACS: Fluorescence-activated cell sorting; FC: Flow cytometry; ICC: Immunocytochemistry; IF: Immunofluorescence microscopy; IHC: Immunohistochemistry; IP: Immunoprecipitation; RIA: Radioimmunoassay; WB: Western blotting

## Properties

Formulation:	Phosphate-buffered solution, pH 7.2, containing 0.09% sodium azide and 0.2% (w/v) bovine serum albumin
Purification:	The antibody was purified by affinity chromatography and conjugated with PE under optimal conditions. The solution is free of unconjugated PE and unconjugated antibody.
Stability and Storage:	Product stable at 2 - 8°C when stored undiluted. Do not freeze. Protect product from prolonged exposure to light. For product expiry date, please contact <a href="mailto:techsupport@stemcell.com">techsupport@stemcell.com</a> .
Directions for Use:	For flow cytometry, the suggested use of this antibody is 5 µL per 1 x 10 <sup>6</sup> cells in 100 µL or per 100 µL of whole blood. It is recommended that the antibody be titrated for optimal performance for each application.

## Data



Flow cytometry analysis of human peripheral blood mononuclear cells (PBMCs) labeled with Anti-Human CD2 Antibody, Clone RPA-2.10, PE and anti-human CD45 APC.

## Related Products

For a complete list of antibodies, including other conjugates, sizes and clones, as well as related products available from STEMCELL Technologies, please visit our website at [www.stemcell.com/antibodies](http://www.stemcell.com/antibodies) or contact us at [techsupport@stemcell.com](mailto:techsupport@stemcell.com).

## References

1. Perona-Wright G et al. (2010) Sustained signaling by canonical helper T cell cytokines throughout the reactive lymph node. *Nat Immunol* 11(6): 520–6. (FC)
2. Thümmler K et al. (2010) Immune regulation by peripheral suppressor T cells induced upon homotypic T cell/T cell interactions. *J Leukoc Biol* 88(5): 1041–50. (FC)
3. Glatman Zaretsky A et al. (2009) T follicular helper cells differentiate from Th2 cells in response to helminth antigens. *J Exp Med* 206(5): 991–9. (FC, ICC, IF, IHC)
4. Kap YS et al. (2009) A monoclonal antibody selection for immunohistochemical examination of lymphoid tissues from non-human primates. *J Histochem Cytochem* 57(12): 1159–67. (IHC)
5. Piriou-Guzylack L & Salmon H. (2008) Membrane markers of the immune cells in swine: an update. *Vet Res* 39(6): 54.
6. Scherthaner GH et al. (2001) Expression, epitope analysis, and functional role of the LFA-2 antigen detectable on neoplastic mast cells. *Blood* 98(13): 3784–92. (FC)
7. Yoshino N et al. (2000) Upgrading of flow cytometric analysis for absolute counts, cytokines and other antigenic molecules of cynomolgus monkeys (*Macaca fascicularis*) by using anti-human cross-reactive antibodies. *Exp Anim* 49(2): 97–110. (FC)
8. Ozwara H et al. (1997) Flow cytometric analysis on reactivity of human T lymphocyte-specific and cytokine-receptor-specific antibodies with peripheral blood mononuclear cells of chimpanzee (*Pan troglodytes*), rhesus macaque (*Macaca mulatta*), and squirrel monkey (*Saimiri sciureus*). *J Med Primatol* 26(3): 164–71. (FC)
9. Knapp W et al. (Eds.). (1989) *Leucocyte Typing IV: White Cell Differentiation Antigens*. New York: Oxford University Press.
10. Aversa GG et al. (1987) RPA-2.10: an anti-CD2 monoclonal antibody that inhibits alloimmune responses and monitors T cell activation. *Transplant Proc* 19(1 Pt 1): 277–8 (FA/Blocking)

STEMCELL TECHNOLOGIES INC.'S QUALITY MANAGEMENT SYSTEM IS CERTIFIED TO ISO 13485. PRODUCTS ARE FOR RESEARCH USE ONLY AND NOT INTENDED FOR HUMAN OR ANIMAL DIAGNOSTIC OR THERAPEUTIC USES UNLESS OTHERWISE STATED.

Copyright © 2018 by STEMCELL Technologies Inc. All rights reserved including graphics and images. STEMCELL Technologies & Design, STEMCELL Shield Design, Scientists Helping Scientists, and EasySep are trademarks of STEMCELL Technologies Canada Inc. All other trademarks are the property of their respective holders. While STEMCELL has made all reasonable efforts to ensure that the information provided by STEMCELL and its suppliers is correct, it makes no warranties or representations as to the accuracy or completeness of such information.