

Anti-Mouse CD11b Antibody, Clone M1/70, Alexa Fluor® 488



Scientists Helping Scientists™ | WWW.STEMCELL.COM

TOLL FREE PHONE 1 800 667 0322 • PHONE +1 604 877 0713

INFO@STEMCELL.COM • TECHSUPPORT@STEMCELL.COM

FOR GLOBAL CONTACT DETAILS VISIT OUR WEBSITE

Antibodies

Rat monoclonal IgG2b antibody
against human, mouse, rhesus CD11b,
Alexa Fluor® 488-conjugated

Catalog #60001AD
#60001AD.1

100 µg 0.5 mg/mL
25 µg 0.5 mg/mL

Product Description

The M1/70 antibody reacts with CD11b, an ~170 kDa type 1 transmembrane glycoprotein which associates non-covalently with CD18 to form the heterodimeric Mac-1 receptor. Through its interactions with ligands such as ICAM-1 (CD54), ICAM-2 (CD102), ICAM-4 (CD242), iC3b, and fibrinogen, Mac-1 functions in several processes, including the adherence of neutrophils and monocytes to stimulated endothelium and phagocytosis of complement-coated particles. CD11b is expressed on the surface of granulocytes, monocytes, NK cells, dendritic cells, tissue macrophages and subsets of T and B cells, and has been used as a marker to distinguish naïve and memory CD8+ T cells. CD11b is a relatively late marker for myeloid differentiation and is undetectable on most myelomonocytic hematopoietic progenitor cells and more primitive cells. The M1/70 antibody reportedly blocks iC3b binding to Mac-1.

| | |
|----------------------|--|
| Target Antigen Name: | CD11b |
| Alternative Names: | alphaM integrin, C3biR, CR3, Ly-40, Mac-1, Mo1 |
| Gene ID: | 16409 |
| Species Reactivity: | Human, Mouse, Rhesus, Cynomolgus, Baboon, Chimpanzee, Rabbit |
| Host Species: | Rat |
| Clonality: | Monoclonal |
| Clone: | M1/70 |
| Isotype: | IgG2b, kappa |
| Immunogen: | C57BL/10 mouse splenocytes |
| Conjugate: | Alexa Fluor® 488 |

Applications

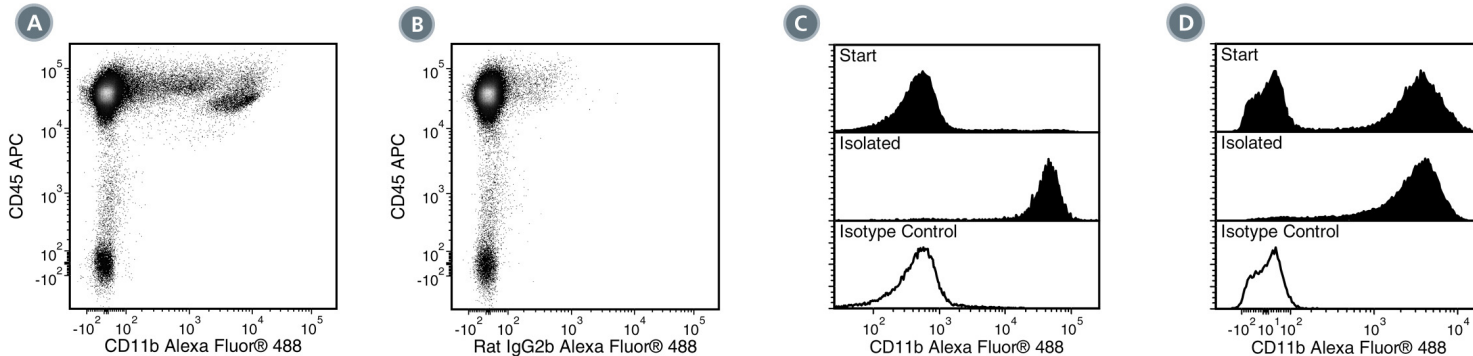
| | |
|-----------------------|---|
| Verified: | FC |
| Reported: | FC |
| Special Applications: | This antibody clone has been verified for purity assessments of cells isolated with EasySep™ kits, including EasySep™ Mouse Monocyte Enrichment Kit (Catalog #19761). |

Abbreviations: CellSep: Cell separation; ChIP: Chromatin immunoprecipitation; FA: Functional assay; FC: Flow cytometry; ICC: Immunocytochemistry; IF: Immunofluorescence microscopy; IHC: Immunohistochemistry; IP: Immunoprecipitation; RIA: Radioimmunoassay; WB: Western blotting

Properties

| | |
|------------------------|--|
| Formulation: | Phosphate-buffered solution, pH 7.2, containing 0.09% sodium azide |
| Purification: | The antibody was purified by affinity chromatography and conjugated with Alexa Fluor® 488 under optimal conditions. The solution is free of unconjugated Alexa Fluor® 488. |
| Stability and Storage: | Product stable at 2 - 8°C when stored undiluted. Do not freeze. Protect product from prolonged exposure to light. For product expiry date, please contact techsupport@stemcell.com . |
| Directions for Use: | For flow cytometry the suggested use of this antibody is ≤ 0.25 µg per 1 x 10 ⁶ cells in 100 µL volume. It is recommended that the antibody be titrated for optimal performance for each application. |

Data



(A) Flow cytometry analysis of C57BL/6 mouse splenocytes labeled with Anti-Mouse CD11b Antibody, Clone M1/70, Alexa Fluor® 488 and anti-mouse CD45 APC.

(B) Flow cytometry analysis of C57BL/6 mouse splenocytes labeled with a rat IgG2b, kappa Alexa Fluor® 488 isotype control antibody and anti-mouse CD45 APC.

(C) Flow cytometry analysis of C57BL/6 mouse splenocytes processed with the EasySep™ Mouse Monocyte Enrichment Kit and labeled with Anti-Mouse CD11b Antibody, Clone M1/70, Alexa Fluor® 488. Histograms show labeling of splenocytes (Start) and isolated cells (Isolated). Labeling of start cells with a rat IgG2b, kappa Alexa Fluor® 488 isotype control antibody is shown in the bottom panel (open histogram).

(D) Flow cytometry analysis of C57BL/6 mouse bone marrow cells processed with the EasySep™ Mouse Monocyte Enrichment Kit and labeled with Anti-Mouse CD11b Antibody, Clone M1/70, Alexa Fluor® 488. Histograms show labeling of bone marrow cells (Start) and isolated cells (Isolated). Labeling of start cells with a rat IgG2b, kappa Alexa Fluor® 488 isotype control antibody is shown in the bottom panel (open histogram).

Related Products

For a complete list of antibodies, including other conjugates, sizes and clones, as well as related products available from STEMCELL Technologies, please visit our website at www.stemcell.com/antibodies or contact us at techsupport@stemcell.com.

References

- Ahn G-O et al. (2010) Inhibition of Mac-1 (CD11b/CD18) enhances tumor response to radiation by reducing myeloid cell recruitment. *Proceedings of the National Academy of Sciences of the United States of America* 107(18): 8363–8. (FA, ICC, IF, IHC)
- Baumgartner CK et al. (2010) Peptide-MHC class II complex stability governs CD4 T cell clonal selection. *Journal of immunology* (Baltimore, Md : 1950) 184(2): 573–81. (FACS, FA)
- Charles N et al. (2010) Basophils and the T helper 2 environment can promote the development of lupus nephritis. *Nature medicine* 16(6): 701–7. (FC)
- Norian LA et al. (2009) Tumor-infiltrating regulatory dendritic cells inhibit CD8+ T cell function via L-arginine metabolism. *Cancer research* 69(7): 3086–94. (FA)
- Dzhagalov I et al. (2007) The antiapoptotic protein Mcl-1 is essential for the survival of neutrophils but not macrophages. *Blood* 109(4): 1620–6. (FC)
- Tailleux L et al. (2003) DC-SIGN is the major Mycobacterium tuberculosis receptor on human dendritic cells. *The Journal of experimental medicine* 197(1): 121–7. (FA, FC)
- Iwasaki A & Kelsall BL. (2001) Unique functions of CD11b+, CD8 alpha+, and double-negative Peyer's patch dendritic cells. *Journal of immunology* (Baltimore, Md : 1950) 166(8): 4884–90. (FACS, FC, IF, IHC)
- Noel GJ et al. (1990) Role of complement in mouse macrophage binding of Haemophilus influenzae type b. *The Journal of clinical investigation* 85(1): 208–18. (FA)
- Sanchez-Madrid F et al. (1983) Mapping of antigenic and functional epitopes on the alpha- and beta-subunits of two related mouse glycoproteins involved in cell interactions, LFA-1 and Mac-1. *The Journal of experimental medicine* 158(2): 586–602. (IP)
- Beller DI et al. (1982) Anti-Mac-1 selectively inhibits the mouse and human type three complement receptor. *The Journal of experimental medicine* 156(4): 1000–9. (FA)
- Ault KA & Springer TA. (1981) Cross-reaction of a rat-anti-mouse phagocyte-specific monoclonal antibody (anti-Mac-1) with human monocytes and natural killer cells. *Journal of immunology* (Baltimore, Md : 1950) 126(1): 359–64. (FA, FACS, RC, RIA)
- Springer T et al. (1979) Mac-1: a macrophage differentiation antigen identified by monoclonal antibody. *European journal of immunology* 9(4): 301–6.
- Springer T et al. (1978) Monoclonal xenogeneic antibodies to murine cell surface antigens: identification of novel leukocyte differentiation antigens. *European journal of immunology* 8(8): 539–51. (IP)

STEMCELL TECHNOLOGIES INC.'S QUALITY MANAGEMENT SYSTEM IS CERTIFIED TO ISO 13485. PRODUCTS ARE FOR RESEARCH USE ONLY AND NOT INTENDED FOR HUMAN OR ANIMAL DIAGNOSTIC OR THERAPEUTIC USES UNLESS OTHERWISE STATED.

Copyright © 2016 by STEMCELL Technologies Inc. All rights reserved including graphics and images. STEMCELL Technologies & Design, STEMCELL Shield Design, Scientists Helping Scientists and EasySep are trademarks of STEMCELL Technologies Inc. All other trademarks are the property of their respective holders. Alexa Fluor® is a registered trademark of Life Technologies Corporation. This product is licensed for internal research use only and its sale is expressly conditioned on the buyer not using it for manufacturing, performing a service, or medical test, or otherwise generating revenue. For use other than research, contact Life Technologies Corporation, 5791 Van Allen Way, Carlsbad, CA 92008 USA or outlicensing@lifetech.com. While STEMCELL has made all reasonable efforts to ensure that the information provided by STEMCELL and its suppliers is correct, it makes no warranties or representations as to the accuracy or completeness of such information.