

# EasySep™ Human CD19 Positive Selection Kit II

## Depletion protocol

For processing 1 x 10<sup>9</sup> cells

Catalog #17854

Document #10000031471 | Version 00



Scientists Helping Scientists™ | [WWW.STEMCELL.COM](http://WWW.STEMCELL.COM)

TOLL FREE PHONE 1 800 667 0322 • PHONE +1 604 877 0713

[INFO@STEMCELL.COM](mailto:INFO@STEMCELL.COM) • [TECHSUPPORT@STEMCELL.COM](mailto:TECHSUPPORT@STEMCELL.COM)

FOR GLOBAL CONTACT DETAILS VISIT OUR WEBSITE

## Description

Deplete CD19+ cells from fresh human peripheral blood mononuclear cells (PBMCs) or washed leukapheresis samples in as little as 18 minutes by immunomagnetic depletion.

- Fast and easy-to-use
- Up to 99% depletion
- No columns required

This kit targets CD19+ cells for depletion with antibodies recognizing the CD19 surface marker. Target cells are labeled with antibodies and magnetic particles and separated without columns using an EasySep™ magnet. Desired cells are simply poured off into a new tube and are immediately available for downstream applications, such as flow cytometry, culture, or DNA/RNA extraction.

**NOTE:** Processing 1 x 10<sup>9</sup> cells using the depletion protocol requires two vials of EasySep™ Dextran RapidSpheres™ 50100. To purchase an additional vial, contact us at [orders@stemcell.com](mailto:orders@stemcell.com).

## Component Descriptions

COMPONENT NAME	COMPONENT #	QUANTITY	STORAGE	SHELF LIFE	FORMAT
EasySep™ Human CD19 Positive Selection Cocktail II	17854C	1 x 1 mL	Store at 2 - 8°C. Do not freeze.	Stable until expiry date (EXP) on label.	A combination of monoclonal antibodies in PBS with 0.09% rHA. Includes an Fc receptor blocking antibody.
EasySep™ Dextran RapidSpheres™ 50100	50100	1 x 1 mL	Store at 2 - 8°C. Do not freeze.	Stable until expiry date (EXP) on label.	A suspension of magnetic particles in water.

PBS - phosphate-buffered saline; rHA - recombinant human albumin

Components may be shipped at room temperature (15 - 25°C) but should be stored as indicated above.

## Sample Preparation

For available fresh samples, see [www.stemcell.com/primarycells](http://www.stemcell.com/primarycells)

### LEUKAPHERESIS

Wash the peripheral blood leukapheresis sample by adding an equivalent volume of recommended medium or PBS containing 2% fetal bovine serum (FBS). Centrifuge at 300 x g for 10 minutes at room temperature (15 - 25°C). If red blood cell (RBC) lysis is necessary, lyse with Ammonium Chloride Solution (Catalog #07800). If platelet removal is necessary, centrifuge at 120 x g for 10 minutes with the brake off. Remove the supernatant and resuspend the cells at 1 x 10<sup>8</sup> cells/mL in recommended medium.

### PERIPHERAL BLOOD

Prepare a PBMC suspension from whole blood by centrifugation over a density gradient medium (e.g. Lymphoprep™, Catalog #07811). For more rapid PBMC preparation, use the SepMate™ RUO (Catalog #86450/86415) or SepMate™ IVD\* (Catalog #85450/85415) cell isolation tube.

After preparation, resuspend cells at 1 x 10<sup>8</sup> cells/mL in recommended medium.

\* SepMate™ IVD is only available in select regions where it is registered as an In Vitro Diagnostic (IVD) device for the isolation of mononuclear cells (MNCs) from whole blood or bone marrow by density gradient centrifugation. In all other regions, SepMate™ is available for research use only (RUO).



## Recommended Medium

EasySep™ Buffer (Catalog #20144) or PBS containing 2% FBS and 1 mM EDTA. Medium should be free of Ca<sup>++</sup> and Mg<sup>++</sup>.

## Directions for Use – Manual EasySep™ Protocols

See page 1 for Sample Preparation and Recommended Medium. Refer to Tables 1 and 2 for detailed instructions regarding the EasySep™ procedure for each magnet.

**Table 1. EasySep™ Human CD19 Depletion Protocol**

		EASYSEP™ MAGNETS	
STEP	INSTRUCTIONS	 <b>EasySep™</b> (Catalog #18000)	<b>“The Big Easy”</b> (Catalog #18001) 
1	Prepare sample at the indicated cell concentration within the volume range.	1 x 10 <sup>8</sup> cells/mL 0.25 - 2 mL	1 x 10 <sup>8</sup> cells/mL 0.5 - 8 mL
	Add sample to required tube.	5 mL (12 x 75 mm) polystyrene round-bottom tube (e.g. Catalog #38007)	14 mL (17 x 95 mm) polystyrene round-bottom tube (e.g. Catalog #38008)
2	Add Cocktail to sample. NOTE: Do not vortex cocktail.	100 µL/mL of sample	100 µL/mL of sample
	Mix and incubate.	RT for 3 minutes	RT for 3 minutes
3	Vortex RapidSpheres™. NOTE: Particles should appear evenly dispersed.	30 seconds	30 seconds
4	Add RapidSpheres™ to sample.	100 µL/mL of sample	100 µL/mL of sample
	Mix and incubate.	RT for 3 minutes	RT for 3 minutes
5	Add recommended medium to top up the sample to the indicated volume. Mix by gently pipetting up and down 2 - 3 times.	Top up to 2.5 mL	<ul style="list-style-type: none"> <li>• Top up to 5 mL for samples &lt; 1 mL</li> <li>• Top up to 10 mL for samples ≥ 1 mL</li> </ul>
	Place the tube (without lid) into the magnet and incubate.	RT for 3 minutes	RT for 3 minutes
6	Pick up the magnet, and in one continuous motion invert the magnet and tube,* pouring the depleted cell suspension into a new tube.	Use a new 5 mL tube	Use a new 14 mL tube
7	Add RapidSpheres™ to the depleted cell suspension.	100 µL/mL of original sample volume	100 µL/mL of original sample volume
	Mix and incubate.	RT for 3 minutes	RT for 3 minutes
8	Remove the tube from the magnet; place the new tube (without lid) into the magnet and incubate for a second separation.	RT for 3 minutes	RT for 3 minutes
9	Pick up the magnet, and in one continuous motion invert the magnet and tube,* pouring the depleted cell suspension into a new tube.	Use a new 5 mL tube	Use a new 14 mL tube
10	Remove the tube from the magnet; place the new tube (without lid) into the magnet and incubate for a third separation.	RT for 3 minutes	RT for 3 minutes
11	Pick up the magnet, and in one continuous motion invert the magnet and tube,* pouring the depleted cell suspension into a new tube.	Isolated cells are ready for use	Isolated cells are ready for use

RT - room temperature (15 - 25°C)

\* Leave the magnet and tube inverted for 2 - 3 seconds, then return upright. Do not shake or blot off any drops that may remain hanging from the mouth of the tube.

Table 2. EasySep™ Human CD19 Depletion Protocol

		EASYSEP™ MAGNETS		
STEP	INSTRUCTIONS	EasyEights™ (Catalog #18103)		Easy 50 EasySep™ (Catalog #18002)
		5 mL tube	14 mL tube	
1	Prepare sample at the indicated cell concentration within the volume range.	1 x 10 <sup>8</sup> cells/mL 0.25 - 2 mL	1 x 10 <sup>8</sup> cells/mL 1 - 8 mL	1 x 10 <sup>8</sup> cells/mL 5 - 35 mL
	Add sample to required tube.	5 mL (12 x 75 mm) polystyrene round-bottom tube (e.g. Catalog #38007)	14 mL (17 x 95 mm) polystyrene round-bottom tube (e.g. Catalog #38008)	50 mL (30 x 115 mm) conical tube (e.g. Catalog #38010)
2	Add Cocktail to sample. NOTE: Do not vortex cocktail.	100 µL/mL of sample	100 µL/mL of sample	100 µL/mL of sample
	Mix and incubate.	RT for 3 minutes	RT for 3 minutes	RT for 3 minutes
3	Vortex RapidSpheres™. NOTE: Particles should appear evenly dispersed.	30 seconds	30 seconds	30 seconds
4	Add RapidSpheres™ to sample.	100 µL/mL of sample	100 µL/mL of sample	100 µL/mL of sample
	Mix and incubate.	RT for 3 minutes	RT for 3 minutes	RT for 3 minutes
5	Add recommended medium to top up sample to the indicated volume. Mix by gently pipetting up and down 2 - 3 times.	Top up to 2.5 mL	<ul style="list-style-type: none"> <li>Top up to 5 mL for samples ≤ 3 mL</li> <li>Top up to 10 mL for samples &gt; 3 mL</li> </ul>	Top up to: <ul style="list-style-type: none"> <li>10 mL for samples ≤ 5 mL</li> <li>20 mL for samples &gt; 5 - 10 mL</li> <li>30 mL for samples &gt; 10 - 15 mL</li> <li>40 mL for samples &gt; 15 - 20 mL</li> <li>50 mL for samples &gt; 20 - 35 mL</li> </ul>
	Place the tube (without lid) into the magnet and incubate.	RT for 10 minutes	RT for 10 minutes	RT for 10 minutes
6	Carefully pipette** (do not pour) the depleted cell suspension into a new tube.	Use a new 5 mL tube	Use a new 14 mL tube	Use a new 50 mL tube
7	Add RapidSpheres™ to the depleted cell suspension.	100 µL/mL of original sample volume	100 µL/mL of original sample volume	100 µL/mL of original sample volume
	Mix and incubate.	RT for 3 minutes	RT for 3 minutes	RT for 3 minutes
8	Remove the tube from the magnet; place the new tube (without lid) into the magnet and incubate for a second separation.	RT for 10 minutes	RT for 10 minutes	RT for 10 minutes
9	Carefully pipette** (do not pour) the depleted cell suspension into a new tube.	Use a new 5 mL tube	Use a new 14 mL tube	Use a new 50 mL tube
10	Remove the tube from the magnet; place the new tube (without lid) into the magnet and incubate for a third separation.	RT for 5 minutes	RT for 5 minutes	RT for 5 minutes
11	Carefully pipette** (do not pour) the depleted cell suspension into a new tube.	Isolated cells are ready for use	Isolated cells are ready for use	Isolated cells are ready for use

RT - room temperature (15 - 25°C)

\*\* Collect the entire supernatant, all at once, into a single pipette (e.g. for EasyEights™ 5 mL tube, use a 2 mL serological pipette [Catalog #38002]; for EasyEights™ 14 mL tube, use a 10 mL serological pipette [Catalog #38004]).

## Notes and Tips

### ASSESSING PURITY

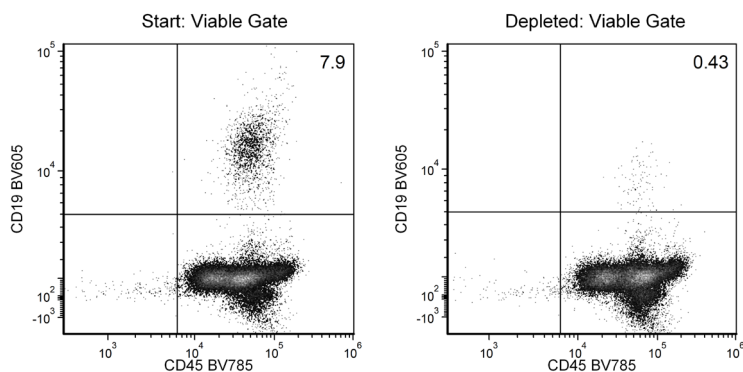
For purity assessment of CD19+ cells by flow cytometry, use one of the following fluorochrome-conjugated antibody clones:

- Anti-Human CD19 Antibody, Clone HIB19 (Catalog #60005; partially blocked), or
- Anti-Human CD19 antibody, clone 4G7 (partially blocked), or
- Anti-Human CD19 antibody, clone FMC63 (partially blocked)

One of the following methods can also be used:

- Use an alternative marker such as fluorochrome-conjugated Anti-Human CD20 Antibody, Clone 2H7 (Catalog #60008); this may underestimate CD19-positive purity by up to 15%.
- Use a fluorochrome-conjugated secondary antibody, such as Goat Anti-Mouse IgG (H+L) Antibody, Polyclonal (Catalog #60138).

## Data



Starting with leukopheresis sample, the CD19+ cell content (based on viable cells) of the depleted fraction is typically  $0.45 \pm 0.36\%$  (mean  $\pm$  SD using "The Big Easy" EasySep™ Magnet). In the above example, the purities of the start and final depleted fractions are 7.9% and 0.43%, respectively.

PRODUCTS ARE FOR RESEARCH USE ONLY AND NOT INTENDED FOR HUMAN OR ANIMAL DIAGNOSTIC OR THERAPEUTIC USES UNLESS OTHERWISE STATED. FOR ADDITIONAL INFORMATION ON QUALITY AT STEMCELL, REFER TO [WWW.STEMCELL.COM/COMPLIANCE](http://WWW.STEMCELL.COM/COMPLIANCE).

Copyright © 2025 by STEMCELL Technologies Inc. All rights reserved including graphics and images. STEMCELL Technologies & Design, STEMCELL Shield Design, Scientists Helping Scientists, EasySep, EasyEights, RapidSpheres, and SepMate are trademarks of STEMCELL Technologies Canada Inc. Lymphoprep is a trademark of Serumwerk Bernburg AG. The products sold under the Lymphoprep brand name are also manufactured by Serumwerk Bernburg AG. All other trademarks are the property of their respective holders. While STEMCELL has made all reasonable efforts to ensure that the information provided by STEMCELL and its suppliers is correct, it makes no warranties or representations as to the accuracy or completeness of such information.