

# Cytokines

## Human Recombinant ASAM

Adipocyte-specific adhesion molecule, His tag



Scientists Helping Scientists™ | [WWW.STEMCELL.COM](http://WWW.STEMCELL.COM)

TOLL FREE PHONE 1 800 667 0322 • PHONE +1 604 877 0713

[INFO@STEMCELL.COM](mailto:INFO@STEMCELL.COM) • [TECHSUPPORT@STEMCELL.COM](mailto:TECHSUPPORT@STEMCELL.COM)

FOR GLOBAL CONTACT DETAILS VISIT OUR WEBSITE

Catalog #100-1331

100 µg

## Product Description

Adipocyte-specific adhesion molecule (ASAM), also known as adipocyte adhesion molecule (ACAM), is a type 1 transmembrane protein belonging to the cortical thymocyte marker in *Xenopus* (CTX) family within the immunoglobulin superfamily. ASAM is expressed in epithelial cells of various tissues and is associated with tight junctions, suggesting a role in cell-cell adhesion (Raschberger et al., Sze et al.). It contains a His-residue tag at the carboxyl end of the polypeptide chain. Sequence alignment analysis shows ASAM shares conserved characteristics with other CTX-like proteins, including extracellular V-type and C2-type domains, a transmembrane region, and a cytoplasmic tail (Raschberger et al.). ASAM is also expressed in adipocytes and was found to be upregulated in white adipose tissue (WAT) in a rodent model of obesity and type II diabetes (Eguchi et al.).

## Product Information

**Alternative Names:** ACAM, CLMP, CSBM, CSBS

**Accession Number:** NP\_079045.1 (Met1-Met233) was expressed with a polyhistidine tag at the C-terminus.

**Amino Acid Sequence:** MSLLLLLLLV SYVGTGLGTH TEIKRVAEEK VTLPCHHQLG LPEKDTLDIE WLLTDNEGNQ KVVITYSSRH VYNNLTEEQK GRVAFASNFL AGDASLQIEP LKPSDEGRYT CKVKNSGRYV WSHVILKVLV RPSKPKCELE GELTEGSDLT LQCESSSGTE PIVYYWQRIR EKEGEDERLP PKSRIDYNHP GRVLLQNLTM SYSGLYQCTA GNEAGKESCV VRVTVQYVQS IGMAMHHHHHH HHHH

**Predicted Molecular Mass:** 25.8 kDa

**Species:** Human

**Formulation:** Lyophilized from sterile PBS, pH 7.4. Trehalose (5 - 8%), mannitol (5%), and 0.01% TWEEN® 80 are normally added as protectants before lyophilization.

**Source:** HEK293 cells

## Specifications

**Activity:** Not available

**Purity:** ≥ 94%

**Endotoxin Level:** Measured by kinetic Limulus amoebocyte lysate (LAL) analysis and is ≤ 1 EU/µg protein.

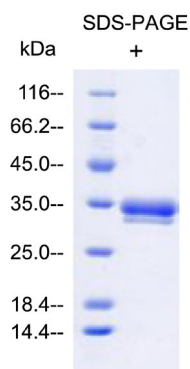
## Preparation and Storage

**Storage:** Store at -20 to -80°C.

**Stability:** Stable as supplied for 12 months from date of receipt.

**Preparation:** Centrifuge vial before opening. Reconstitute the product in sterile water to at least 0.25 mg/mL by pipetting the solution down the sides of the vial. Do not vortex. As a general guide, do not store at 2 - 8°C for more than 1 month or at -80°C for more than 3 months. Avoid repeated freeze-thaw cycles.

## Data



Human Recombinant ASAM was resolved with SDS-PAGE under reducing (+) conditions and visualized by Coomassie Blue staining. Human Recombinant ASAM has a predicted molecular mass of 25.8 kDa and an apparent molecular mass of 32 - 35 kDa due to glycosylation.

## Related Products

For a complete list of cytokines, as well as related products available from STEMCELL Technologies, visit [www.stemcell.com/cytokines](http://www.stemcell.com/cytokines), or contact us at [techsupport@stemcell.com](mailto:techsupport@stemcell.com).

## References

Eguchi J et al. (2005) Identification of adipocyte adhesion molecule (ACAM), a novel CTX gene family, implicated in adipocyte maturation and development of obesity. *Biochem J* 387(Pt 2): 343–53.

Raschperger E et al. (2004) CLMP, a novel member of the CTX family and a new component of epithelial tight junctions. *J Biol Chem* 279(1): 796–804.

Sze KL et al. (2008) Expression of CLMP, a novel tight junction protein, is mediated via the interaction of GATA with the Kruppel family proteins, KLF4 and Sp1, in mouse TM4 Sertoli cells. *J Cell Physiol* 214(2): 334–44.

PRODUCTS ARE FOR RESEARCH USE ONLY AND NOT INTENDED FOR HUMAN OR ANIMAL DIAGNOSTIC OR THERAPEUTIC USES UNLESS OTHERWISE STATED.

Copyright © 2023 by STEMCELL Technologies Inc. All rights reserved including graphics and images. STEMCELL Technologies & Design, STEMCELL Shield Design, and Scientists Helping Scientists are trademarks of STEMCELL Technologies Canada Inc. TWEEN is a registered trademark of Croda Americas LLC. All other trademarks are the property of their respective holders. While STEMCELL has made all reasonable efforts to ensure that the information provided by STEMCELL and its suppliers is correct, it makes no warranties or representations as to the accuracy or completeness of such information.