

# ImmunoCult™ Human CD3/CD28 T Cell Activator

cGMP, Human T cell activation and expansion reagent

Catalog #100-0784

10 mL



Scientists Helping Scientists™ | [WWW.STEMCELL.COM](http://WWW.STEMCELL.COM)

TOLL FREE PHONE 1 800 667 0322 • PHONE +1 604 877 0713

[INFO@STEMCELL.COM](mailto:INFO@STEMCELL.COM) • [TECHSUPPORT@STEMCELL.COM](mailto:TECHSUPPORT@STEMCELL.COM)

FOR GLOBAL CONTACT DETAILS VISIT OUR WEBSITE

## Product Description

ImmunoCult™ Human CD3/CD28 T Cell Activator is designed to activate and expand human T cells in the absence of magnetic beads, feeder cells, or antigen. ImmunoCult™ Human CD3/CD28 T Cell Activator consists of soluble antibody complexes that bind CD3 and CD28 cell surface ligands. Binding of the antibody complexes results in the cross-linking of CD3 and CD28 cell surface ligands, thereby providing the required primary and co-stimulatory signals for T cell activation. Activated T cells can be expanded in ImmunoCult™-XF (Catalog #100-0956) or other serum-free media for culturing human T cells supplemented with cytokines.

- Robust activation and expansion of human T cells without the use of magnetic beads, feeder cells, or antigen
- Provides a gentle activation stimulus that maintains high viability of activated and expanded T cells
- Highly stable, filter-sterilized soluble reagent

ImmunoCult™ Human CD3/CD28 T Cell Activator is manufactured and tested following relevant cGMPs under a certified quality management system. For additional quality information, refer to [www.stemcell.com/compliance](http://www.stemcell.com/compliance).

NOTE: The product is intended for single use only.

## Properties

**Storage:** Store at 2 - 8°C.

**Shelf Life:** Stable until expiry date (EXP) on label.

**Contains:**

- Anti-human CD3 monospecific antibody complex
- Anti-human CD28 monospecific antibody complex
- Phosphate buffered-saline (PBS), containing 0.02% TWEEN® 20

## Directions for Use

NOTE: This is a general protocol for using ImmunoCult™ Human CD3/CD28 T Cell Activator. Depending on the experimental objectives, optimization may be required (e.g. cell seeding density and cytokine concentration) for optimal cell growth.

1. Isolate human T cells from fresh or previously frozen peripheral blood mononuclear cells, or leukapheresis samples, using one of the following EasySep™ kits:
  - EasySep™ Release Human CD3 Positive Selection Kit (Catalog #17751)
  - EasySep™ Human T Cell Enrichment Kit (Catalog #19051)
  - EasySep™ Human T Cell Isolation Kit (Catalog #17951)

NOTE: Isolated T cells can be cryopreserved using CryoStor® CS5 (Catalog #07933) or CryoStor® CS10 (Catalog #07930) and stored at -135°C.

2. On day 0:
  - a. Prepare fresh complete ImmunoCult™-XF by adding cytokines (e.g. Human Recombinant IL-2 [Catalog #78036/78145]) to ImmunoCult™-XF. Mix thoroughly.

NOTE: Complete ImmunoCult™-XF must be prepared fresh on each day of use.
  - b. Seed viable human T cells (prepared in step 1) in fresh complete ImmunoCult™-XF (prepared in step 2a) at  $1 \times 10^6$  cells/mL.
3. To activate T cells, add 25  $\mu$ L/mL of ImmunoCult™ Human CD3/CD28 T Cell Activator to the cell suspension. Incubate cells at 37°C and 5% CO<sub>2</sub> for up to 3 days.
4. To expand T cells (after 3 days of activation), perform a viable cell count and adjust the viable cell density every 2 - 3 days by adding fresh complete ImmunoCult™-XF to the cell suspension.

NOTE: For recommended cell densities, refer to the Product Information Sheet for ImmunoCult™-XF, available at [www.stemcell.com](http://www.stemcell.com), or contact us to request a copy.

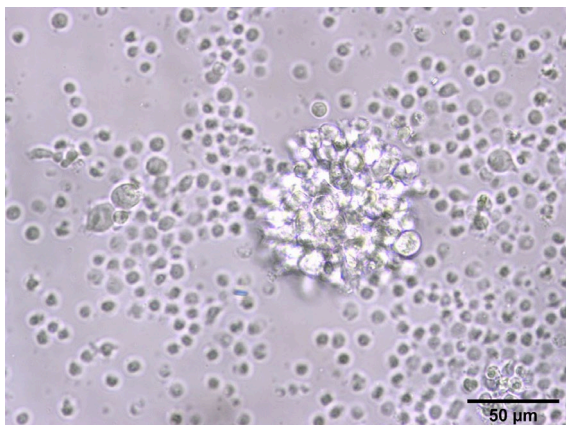
5. Incubate cells at 37°C and 5% CO<sub>2</sub> until the desired cell number is obtained or for up to 12 days.

NOTE: Ensure to add fresh complete medium every 2 - 3 days; do not wait more than 3 days between medium additions.

## Related Products

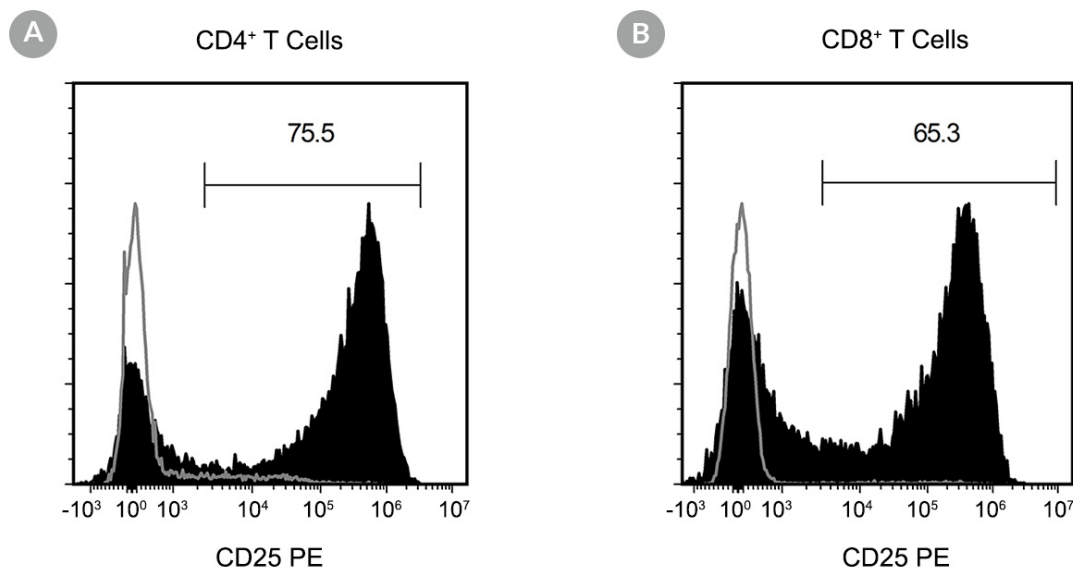
For related products, including specialized culture and storage media, supplements, antibodies, cytokines, and small molecules, visit [www.stemcell.com/TCellEngineering](http://www.stemcell.com/TCellEngineering), or contact us at [techsupport@stemcell.com](mailto:techsupport@stemcell.com).

## Data



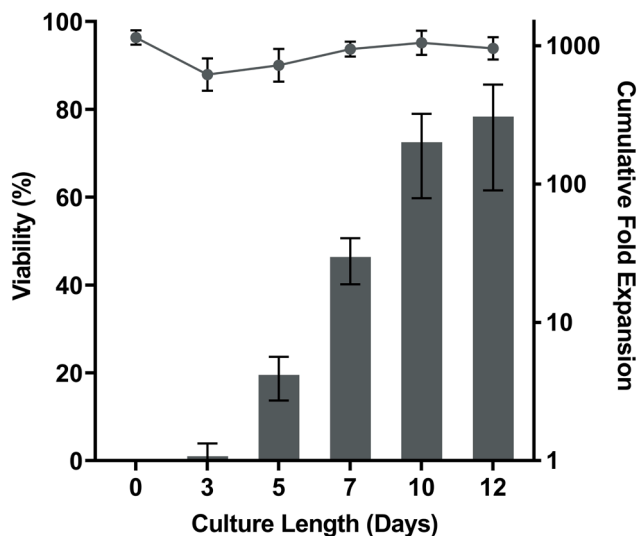
**FIGURE 1. Morphology of Activated Human T Cells Stimulated with ImmunoCult™ Human CD3/CD28 T Cell Activator**

Human T cells isolated using EasySep™ Human T Cell Isolation Kit were stimulated with ImmunoCult™ Human CD3/CD28 T Cell Activator for 3 days in complete ImmunoCult™-XF, supplemented with Human Recombinant IL-2.



**FIGURE 2. Activation of EasySep™-Isolated Human T Cells Stimulated with ImmunoCult™ Human CD3/CD28 T Cell Activator**

EasySep™-isolated human T cells were stimulated with ImmunoCult™ Human CD3/CD28 T Cell Activator and cultured in complete ImmunoCult™-XF, supplemented with Human Recombinant IL-2. Activation of viable CD4+ and CD8+ T cells was assessed by CD25 expression, using flow cytometry. Following 3 days of culture, the frequency of CD25+ cells was **(A)** 75.5% for CD4+ T cells and **(B)** 65.3% for CD8+ T cells. The gray line depicts CD25 expression on CD4+ and CD8+ T cells after 3 days of culture without addition of ImmunoCult™ Human CD3/CD28 T Cell Activator.



**FIGURE 3. Robust Human T Cell Expansion and High Viability with ImmunoCult™ Human CD3/CD28 T Cell Activator**

On day 0,  $1 \times 10^6$  EasySep™-isolated human T cells were stimulated with 25  $\mu$ L of ImmunoCult™ Human CD3/CD28 T Cell Activator in complete ImmunoCult™-XF, supplemented with 10 ng/mL Human Recombinant IL-2. On days 3, 5, 7, and 10, viable cells were counted, viability was measured, and fresh medium supplemented with IL-2 was added. No additional ImmunoCult™ Human CD3/CD28 T Cell Activator was added during the 12-day culture period (mean  $\pm$  SD in 3 experiments with 7 donors).

## Notes and Tips

- (Optional) Rest the post-thawed T cells overnight at 37°C in ImmunoCult™-XF before using the cells in T cell activation and expansion cultures.
- ImmunoCult™ Human CD3/CD28 T Cell Activator supports strong T cell activation and expansion in combination with ImmunoCult™-XF, Human Recombinant IL-7 (Catalog #78053), and Human Recombinant IL-15 (Catalog #78031).

### ASSESSING PURITY

ImmunoCult™ Human CD3/CD28 T Cell Activator contains an anti-CD3 antibody clone that, to our knowledge, fully or partially blocks all anti-CD3 antibody clones used to assess CD3 expression by flow cytometry. For detection of activated T cells by flow cytometry, use alternative markers, such as fluorochrome-conjugated Anti-Human CD4 Antibody, Clone OKT4 (Catalog #60016) and Anti-Human CD8a Antibody, Clone RPA-T8 (Catalog #60022).

THIS PRODUCT IS MANUFACTURED AND TESTED FOLLOWING RELEVANT CGMPs UNDER A CERTIFIED QUALITY MANAGEMENT SYSTEM. PRODUCT IS FOR INVESTIGATIONAL OR RESEARCH USE. NOT INTENDED FOR HUMAN OR ANIMAL DIAGNOSTIC OR THERAPEUTIC USES UNLESS OTHERWISE STATED. FOR ADDITIONAL INFORMATION ON QUALITY AT STEMCELL, REFER TO [WWW.STEMCELL.COM/COMPLIANCE](http://WWW.STEMCELL.COM/COMPLIANCE).

Copyright © 2023 by STEMCELL Technologies Inc. All rights reserved including graphics and images. STEMCELL Technologies & Design, STEMCELL Shield Design, Scientists Helping Scientists, EasySep, and ImmunoCult are trademarks of STEMCELL Technologies Canada Inc. TWEEN is a registered trademark of Croda Americas LLC. All other trademarks are the property of their respective holders. While STEMCELL has made all reasonable efforts to ensure that the information provided by STEMCELL and its suppliers is correct, it makes no warranties or representations as to the accuracy or completeness of such information.