

EasySep™ Human NK Cell Isolation Kit

For processing 1 x 10¹⁰ cells using the Easy 250 EasySep™ Magnet

Catalog #100-0960

Negative Selection

Document #10000013628 | Version 01



Scientists Helping Scientists™ | WWW.STEMCELL.COM

TOLL FREE PHONE 1 800 667 0322 • PHONE +1 604 877 0713

INFO@STEMCELL.COM • TECHSUPPORT@STEMCELL.COM

FOR GLOBAL CONTACT DETAILS VISIT OUR WEBSITE

Description

Isolate untouched and highly purified natural killer (NK) cells from fresh leukapheresis samples by immunomagnetic negative selection.

- Fast, easy-to-use, and column-free
- Up to 98% purity with high recovery
- Untouched, viable cells

This kit targets non-NK cells for removal with antibodies recognizing specific cell surface markers. Unwanted cells are labeled with antibodies and magnetic particles and separated without columns using an EasySep™ magnet. Desired cells are simply pipetted off into a new flask. Isolated cells are immediately available for downstream applications, such as flow cytometry, culture, or DNA/RNA extraction.

NOTE: This is the Product Information Sheet (PIS) for isolating NK cells using the Easy 250 EasySep™ Magnet (Catalog #100-0821). If using other magnets, refer to the applicable PIS, available at www.stemcell.com or contact us to request a copy.

Component Descriptions

COMPONENT NAME	COMPONENT #	QUANTITY	STORAGE	SHELF LIFE	FORMAT
EasySep™ Human NK Cell Isolation Cocktail	300-0475	1 x 10 mL	Store at 2 - 8°C. Do not freeze.	Stable until expiry date (EXP) on label.	A combination of monoclonal antibodies in PBS.
EasySep™ Dextran RapidSpheres™	300-0380	1 x 10 mL	Store at 2 - 8°C. Do not freeze.	Stable until expiry date (EXP) on label.	A suspension of magnetic particles in water.

PBS - phosphate-buffered saline

Components may be shipped at room temperature (15 - 25°C) but should be stored as indicated above.

Sample Preparation

For available fresh samples, see www.stemcell.com/primarycells.

NOTE: Working with fresh lysed leukapheresis samples is recommended for optimal performance. Alternatively, washed leukapheresis samples may be used (see below) for faster sample processing, but a reduction in performance may be observed.

LYSED LEUKAPHERESIS

1. Concentrate the Leukopak (e.g. Human Peripheral Blood Leukopak, Fresh, Catalog #70500*) by centrifuging at 300 x g for 10 minutes. Remove the supernatant and resuspend the cells in 1/10th of the original Leukopak volume with the recommended medium (e.g. for 200 mL of cells, resuspend in 20 mL of the recommended medium).
2. Add 4 parts Ammonium Chloride Solution (Catalog #07800) to 1 part leukapheresis sample (e.g. for 20 mL of concentrated cells, add 80 mL of Ammonium Chloride Solution).
3. Incubate on ice for 15 minutes.
4. Wash the cells by topping up the tube with the recommended medium. Centrifuge at 300 x g for 10 minutes at room temperature (15 - 25°C). Remove the supernatant.
5. OPTIONAL (FOR PLATELET REMOVAL):
 - a. Wash the cells by topping up the tube with the recommended medium. Centrifuge the cells at 120 x g for 10 minutes at room temperature with the brake off. Carefully remove the supernatant.
 - b. Repeat step 5a one or more times until most of the platelets have been removed (indicated by a clear supernatant).
6. Resuspend the cells at 5 x 10⁷ cells/mL in the recommended medium.

* Some primary cell products are available only in select regions. Contact us at techsupport@stemcell.com for further information.

WASHED LEUKAPHERESIS

Wash the fresh peripheral blood leukapheresis sample (e.g. Human Peripheral Blood Leukopak, Fresh) by adding an equivalent volume of the recommended medium or PBS containing 2% fetal bovine serum (FBS). Centrifuge at 300 x g for 10 minutes at room temperature (15 - 25°C). If platelet removal is necessary, centrifuge at 120 x g for 10 minutes with the brake off. Remove the supernatant and resuspend the cells at 5 x 10⁷ cells/mL in the recommended medium.


Recommended Medium

EasySep™ Buffer (Catalog #20144), RoboSep™ Buffer (Catalog #20104), or PBS containing 2% FBS and 1 mM EDTA. Medium should be free of Ca⁺⁺ and Mg⁺⁺.

Directions for Use – Manual EasySep™ Protocol

See pages 1 and 2 for Sample Preparation and Recommended Medium. Refer to Table 1 for detailed instructions regarding the EasySep™ procedure.

Table 1. EasySep™ Human NK Cell Isolation Kit Protocol

		EASYSEP™ MAGNETS
STEP	INSTRUCTIONS	Easy 250 EasySep™ Magnet (Catalog #100-0821) 
1	Prepare sample at the indicated cell concentration within the volume range.	5 x 10 ⁷ cells/mL 45 - 225 mL
	Add sample to required flask.	T-75 cm ² cell culture flask (i.e. Corning Catalog #353135)
2	Add Isolation Cocktail to sample. NOTE: Do not vortex cocktail.	50 µL/mL of sample
	Mix and incubate (see Notes and Tips).	RT for 5 minutes
3	Vortex RapidSpheres™. NOTE: Particles should appear evenly dispersed.	30 seconds
4	Add RapidSpheres™ to sample and mix (see Notes and Tips).	50 µL/mL of sample NOTE: No incubation, IMMEDIATELY proceed to next step
5	Add recommended medium to top up sample to the indicated volume. Mix by gently pipetting up and down 2 - 3 times.	<ul style="list-style-type: none"> Top up to 100 mL for samples ≤ 80 mL Top up to 250 mL for samples > 80 mL
	Place the flask (without cap) into the magnet and incubate.	RT for 10 minutes
6	Carefully pipette (do not pour) the enriched cell suspension into a new flask.	Use a new T-75 cm ² flask
7	Remove the flask from the magnet; place the new flask from step 6 (without cap) into the magnet and incubate for a second separation.	RT for 5 minutes
8	Carefully pipette (do not pour) the enriched cell suspension into a new tube or centrifuge bottle.	Use a new tube or centrifuge bottle*
9	Centrifuge sample; carefully aspirate and discard supernatant (see Notes and Tips).	Centrifuge at 300 x g for 10 minutes at RT with low brake
	Resuspend to the desired cell concentration using recommended medium.	Isolated cells are ready for use

RT - room temperature (15 - 25°C)

* e.g. 50 mL (30 x 115 mm) conical tube (Catalog #38010) or 225 mL centrifuge bottle (Corning Catalog #352075)

Notes and Tips

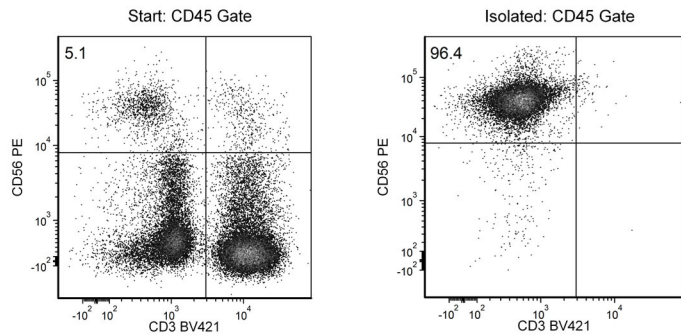
- After addition of Cocktail and RapidSpheres™, mix the sample with a 25 mL or 50 mL serological pipette (e.g. Catalog #38005/38006).
NOTE: Mixing can also be performed by rotating or gently agitating the flask. Cap the flask first to prevent spillage.
- To collect the supernatant, gently sweep the pipette back and forth along the midline of the T-75 cm² flask while aspirating. Avoid touching the sides of the flask. Switch to a 10 mL or smaller serological pipette to collect the residual supernatant.

ASSESSING PURITY

For purity assessment of NK cells (CD3-CD56+) by flow cytometry, use the following fluorochrome-conjugated antibody clones:

- Anti-Human CD3 Antibody, Clone UCHT1 (Catalog #60011), and
- Anti-Human CD56 Antibody, Clone HCD56 (Catalog #60021)
- Anti-Human CD45 Antibody, Clone HI30 (Catalog #60018; optional)

Data



Starting with washed or lysed leukapheresis samples, the NK cell content (CD3-CD56+) of the isolated fraction is typically $96.5 \pm 1.7\%$ (gated on viable cells, mean \pm SD for the Easy 250 EasySep™ Magnet). In the above example, the purities of the start and final isolated fractions are 5.1% and 96.4%, respectively.

PRODUCTS ARE FOR RESEARCH USE ONLY AND NOT INTENDED FOR HUMAN OR ANIMAL DIAGNOSTIC OR THERAPEUTIC USES UNLESS OTHERWISE STATED. FOR ADDITIONAL INFORMATION ON QUALITY AT STEMCELL, REFER TO WWW.STEMCELL.COM/COMPLIANCE.

Copyright © 2025 by STEMCELL Technologies Inc. All rights reserved including graphics and images. STEMCELL Technologies & Design, STEMCELL Shield Design, Scientists Helping Scientists, EasySep, RapidSpheres, and RoboSep are trademarks of STEMCELL Technologies Canada Inc. Corning is a registered trademark of Corning Incorporated. All other trademarks are the property of their respective holders. While STEMCELL has made all reasonable efforts to ensure that the information provided by STEMCELL and its suppliers is correct, it makes no warranties or representations as to the accuracy or completeness of such information.