

20 mL Extracellular Vesicle SEC Columns



Scientists Helping Scientists™ | WWW.STEMCELL.COM

TOLL FREE PHONE 1 800 667 0322 • PHONE +1 604 877 0713

INFO@STEMCELL.COM • TECHSUPPORT@STEMCELL.COM

FOR GLOBAL CONTACT DETAILS VISIT OUR WEBSITE

Size exclusion chromatography (SEC) columns for extracellular vesicle isolation

Catalog # 100-0416

3 columns

Product Description

Extracellular Vesicle Size Exclusion Chromatography (SEC) Columns are ideal for the isolation and purification of extracellular vesicles (EVs) from numerous types of biological samples, including plasma, serum, and cell culture media (Baranyai et al.). SEC columns provide an efficient method for separation of EVs from circulating proteins (Baranyai et al.). Compared to other methods of EV isolation, SEC causes minimal alteration in vesicle characteristics such as functionality and shape (Gámez-Valero et al.). The isolated EVs are suitable for downstream analysis including flow cytometry, western blot, nucleic acid extraction, and/or functional assays.

The EV isolation protocol using the SEC columns is easy and takes approximately 15 minutes. The columns can be used up to five times, and are available in two additional sizes (0.5 mL [Catalog #100-0414] and 2 mL [Catalog #100-0415]) for different sample volume ranges.

Storage and Stability

Store at 2 - 8°C. Product stable until expiry date on label. Do not use if columns are damaged.

Materials Required But Not Included

PRODUCT NAME	CATALOG #
D-PBS (Without Ca ⁺⁺ and Mg ⁺⁺)	37350
Costar® Microcentrifuge Tubes, 1.7 mL	38089

Sample Preparation

URINE

1. Transfer urine into a 50 mL conical tube (e.g. Catalog #38010).
2. Centrifuge urine at 300 x *g* for 10 minutes. Remove the supernatant and transfer to a 100 kDa molecular weight cut-off (MWCO) centrifuge tube (e.g. PALL catalog #MAP100C37) and centrifuge to concentrate 10-fold according to manufacturer's instructions.

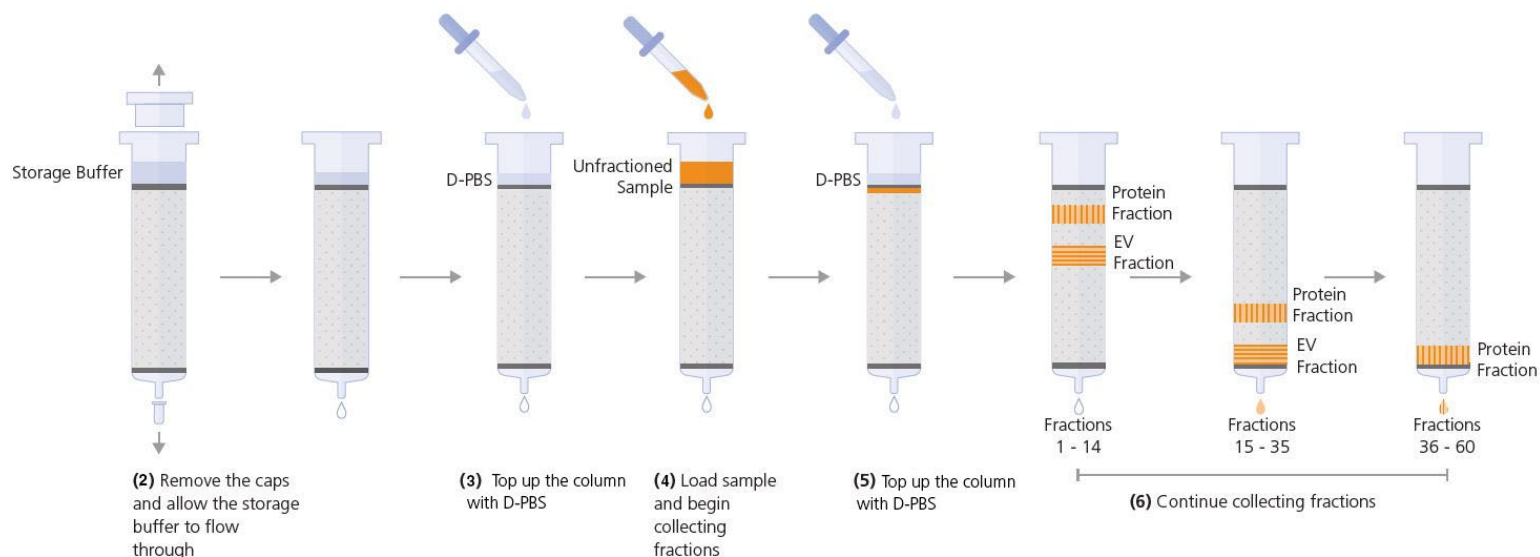
CONDITIONED MEDIUM

1. Harvest conditioned medium and transfer to a 50 mL conical tube (e.g. Catalog #38010).
2. Centrifuge the conditioned medium at 300 x *g* for 10 minutes. Remove the supernatant and transfer to a new 50 mL conical tube.
3. Centrifuge supernatant (from step 2) at 1200 x *g* for 20 minutes. Remove the supernatant and transfer to a new 50 mL conical tube.
4. OPTIONAL: Centrifuge supernatant (from step 3) at 10,000 x *g* for 30 minutes to remove cellular debris and large vesicles.
5. Remove the supernatant (from step 3 or step 4) and transfer to a 100 kDa MWCO centrifuge tube (e.g. PALL catalog #MAP100C37) and centrifuge to concentrate 10-fold according to manufacturer's instructions.

Extracellular Vesicle Isolation

EXTRACELLULAR VESICLE SEC COLUMN PROTOCOL DIAGRAM

Numbers in brackets refer to steps in Directions for Use.

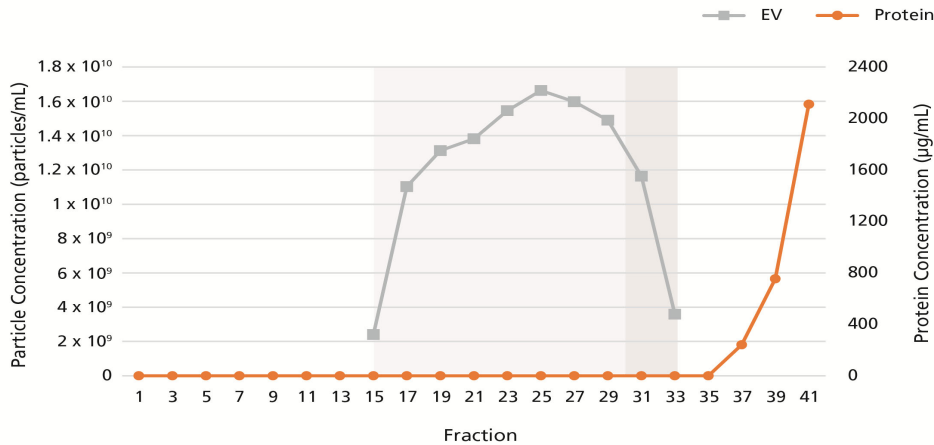


DIRECTIONS FOR USE

1. Stabilize the SEC column in an upright position.
2. Remove the cap from the top and bottom of the column and allow the storage buffer to flow through. Discard flowthrough. Do not allow the column to run dry.
3. Top up the column with D-PBS (Without Ca⁺⁺ and Mg⁺⁺; D-PBS). Allow a total of 150 mL of D-PBS to flow through. Discard flowthrough. Immediately proceed to step 4.
NOTE: Keep the column gel matrix wet at all times.
4. Load 5 - 20 mL of sample to the top of the column and start collecting 1 mL fractions immediately.
5. When all of the sample has been loaded onto the gel matrix, top up the column with D-PBS. Continue to top up the column with D-PBS and do not allow the column to run dry.
6. Continue to collect 1 mL fractions until desired fractions have been collected.
NOTE: EVs typically elute from fractions 15 - 35. Proteins elute from fraction 36 onwards. Elution profile may vary with sample types. Retain all fractions for content analysis.
7. To wash the column, top up the column with D-PBS and allow a total of 150 mL of D-PBS to flow through. Discard flowthrough.
8. Add 1 mL of D-PBS to the column and close the cap on the top and bottom of the column. This will ensure that the gel matrix remains wet.

NOTE: Store column at 2 - 8°C; each column can be used up to 5 times. SEC columns are not considered sterile.

Data



The 20 mL Extracellular Vesicle SEC Column was loaded with 20 mL of 10-fold concentrated serum-free medium conditioned by mesenchymal stem cell culture. 1 mL fractions were collected and analyzed for particle and protein content by nanoparticle tracking analysis (NTA) and bicinchoninic acid (BCA) assays, respectively. EVs were detected in fractions 15 - 30, while proteins were detected in fractions 35 onwards.

NOTE: Fractions 31 - 33, which are outside of the typical EV elution range, may still contain EVs with low protein contamination for serum-free media samples.

Related Products

For related products, including EasySep™ Human Extracellular Vesicle Positive Selection Kits and antibodies, visit www.stemcell.com or contact us at techsupport@stemcell.com.

References

1. Baranyai T et al. (2015) Isolation of exosomes from blood plasma: qualitative and quantitative comparison of ultracentrifugation and size exclusion chromatography methods. *PLoS One* 10(12): e0145686.
2. Gámez-Valero A et al. (2016) Size-exclusion chromatography-based isolation minimally alters extracellular vesicles' characteristics compared to precipitating agents. *Sci Rep* 6(1): 33641.
3. Vallabhajosyula P et al. (2017) Tissue-specific exosome biomarkers for noninvasively monitoring immunologic rejection of transplanted tissue. *J Clin Invest* 127(4): 1375–91.

PRODUCTS ARE FOR RESEARCH USE ONLY AND NOT INTENDED FOR HUMAN OR ANIMAL DIAGNOSTIC OR THERAPEUTIC USES UNLESS OTHERWISE STATED.

Copyright © 2021 by STEMCELL Technologies Inc. All rights reserved including graphics and images. STEMCELL Technologies & Design, STEMCELL Shield Design, Scientists Helping Scientists, and EasySep are trademarks of STEMCELL Technologies Canada Inc. All other trademarks are the property of their respective holders. While STEMCELL has made all reasonable efforts to ensure that the information provided by STEMCELL and its suppliers is correct, it makes no warranties or representations as to the accuracy or completeness of such information.