

Annexin V, FITC



Scientists Helping Scientists™ | WWW.STEMCELL.COM

TOLL FREE PHONE 1 800 667 0322 • PHONE +1 604 877 0713

INFO@STEMCELL.COM • TECHSUPPORT@STEMCELL.COM

FOR GLOBAL CONTACT DETAILS VISIT OUR WEBSITE

A cellular protein for detection of apoptotic cells

Catalog #100-0332	25 tests	5 µL/test
#100-0333	100 tests	5 µL/test

Product Description

Annexin V is a member of the annexin family of proteins that bind to membrane phospholipids in the presence of calcium. This dye has high affinity for phosphatidylserine (PS) that is present in the inner leaflet of the plasma membrane. During early-stage cell apoptosis, PS is translocated from the inner to the outer leaflet of the plasma membrane, exposing it to the external environment. Annexin V, a characteristic marker for early cell apoptosis, detects the translocation of PS to the external environment. Annexin V is used along with viability dyes such as 7-AAD (7-Aminoactinomycin D; Catalog #75001) or Propidium Iodide (Catalog #75002). The process of PS translocation occurs prior to the loss of membrane integrity. Therefore, as cells progress through apoptosis and towards necrosis, the cell membrane is compromised and consequently, viability dyes pass into the cell. Thus, cells undergoing early apoptosis stain positive for Annexin V and negative for viability dyes, while apoptotic death or necrosis is characterized by positive staining for both Annexin V and the viability dye.

Properties

Storage: Product stable at 2 - 8°C when stored undiluted. Do not freeze. Protect product from prolonged exposure to light.
Shelf Life: Stable until expiry date (EXP) on label.
Conjugate: FITC (Fluorescein isothiocyanate)

Applications

Verified: FC
Reported: FC

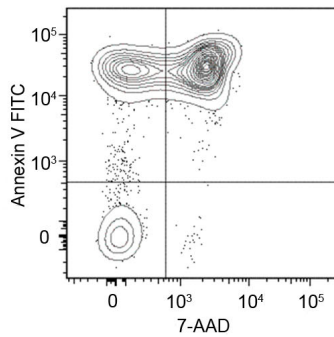
Handling / Directions for Use

FLOW CYTOMETRY

1. Wash cells with 1 - 2 mL of phosphate-buffered saline (PBS) containing 2% fetal bovine serum (FBS) (e.g. Catalog #07905).
2. Centrifuge at 300 x g for 5 minutes at room temperature (15 - 25°C). Remove and discard supernatant.
3. Repeat steps 1 and 2 using PBS containing 2% FBS. To reduce background staining, 1 mL of Annexin V Binding Buffer (Catalog #100-0334) may be used instead.
4. Resuspend cells at a concentration of 1 - 10 x 10⁶ cells/mL in Annexin V Binding Buffer.
5. Aliquot 100 µL of cell suspension to individual tubes for staining.
6. Add 5 µL of Annexin V, FITC to each tube.
7. Add 5 µL of 7-AAD (Catalog #75001) to each tube.
8. Gently vortex cells and incubate at room temperature for 15 minutes. Protect samples from light.
9. OPTIONAL: To reduce background staining, wash cells with 1 mL of Annexin V Binding Buffer. Centrifuge sample at 300 x g for 5 minutes at room temperature. Remove and discard supernatant.
10. Add 200 µL of Annexin V Binding Buffer to each tube.
11. Cells are now ready to be analyzed by flow cytometry.

NOTE: If washing cells with Annexin V Binding Buffer to reduce background staining, additional buffer may be required.

Data



Flow cytometry analysis of C57BL/6 mouse thymocytes incubated at 37°C with 1 μ M dexamethasone overnight. Cells were harvested and labeled with Annexin V, FITC and 7-AAD (7-Aminoactinomycin D; Catalog #75001).

References

1. Koopman G et al. (1994) Annexin V for flow cytometric detection of phosphatidylserine expression on B cells undergoing apoptosis. *Blood* 84(5): 1415–20.

PRODUCTS ARE FOR RESEARCH USE ONLY AND NOT INTENDED FOR HUMAN OR ANIMAL DIAGNOSTIC OR THERAPEUTIC USES UNLESS OTHERWISE STATED.

Copyright © 2020 by STEMCELL Technologies Inc. All rights reserved including graphics and images. STEMCELL Technologies & Design, STEMCELL Shield Design, and Scientists Helping Scientists are trademarks of STEMCELL Technologies Canada Inc. All other trademarks are the property of their respective holders. While STEMCELL has made all reasonable efforts to ensure that the information provided by STEMCELL and its suppliers is correct, it makes no warranties or representations as to the accuracy or completeness of such information.