

EasySep™ HLA Chimerism Buffy Coat CD14 Positive Selection Kit



Scientists Helping Scientists™ | www.stemcell.com

TOLL FREE PHONE 1 800 667 0322 • PHONE +1 604 877 0713

INFO@STEMCELL.COM • TECHSUPPORT@STEMCELL.COM

FOR GLOBAL CONTACT DETAILS VISIT OUR WEBSITE

For processing 15 mL leukoreduction system chamber

Catalog #17878

Catalog #17878RF RoboSep

Positive Selection

Document #1000006454 | Version 01

Description

Isolate highly purified CD14+ cells from a leukoreduction system chamber (LRSC; also known as an LRS cone) by immunomagnetic positive selection.

- Fast and easy-to-use
- Up to 99% purity
- No columns required
- Compatible across EasySep™ platforms "The Big Easy", EasyEights™, and RoboSep™-S

This kit targets CD14+ cells for positive selection with an antibody recognizing the CD14 surface marker. Desired cells are labeled with antibodies and magnetic particles and separated without columns using an EasySep™ magnet. Unwanted cells are simply poured off, while desired cells remain in the tube. Isolated cells are immediately available for downstream applications, such as flow cytometry, culture, or DNA/RNA extraction.

Component Descriptions

COMPONENT NAME	COMPONENT #	QUANTITY	STORAGE	SHELF LIFE	FORMAT
EasySep™ HLA Chimerism Buffy Coat CD14 Positive Selection Cocktail	17878C	2 x 0.75 mL	Store at 2 - 8°C. Do not freeze.	Stable until expiry date (EXP) on label.	A combination of monoclonal antibodies in PBS.
EasySep™ Dextran RapidSpheres™ 50100	50100	2 x 1 mL	Store at 2 - 8°C. Do not freeze.	Stable until expiry date (EXP) on label.	A suspension of magnetic particles in water.
EasySep™ Red Blood Cell Lysis Buffer	20110	1 x 10 mL	Store at 15 - 25°C.	Stable until expiry date (EXP) on label.	A 10X concentrated red blood cell lysis reagent.

PBS - phosphate-buffered saline

Components may be shipped at room temperature (15 - 25°C) but should be stored as indicated above.

Additional Reagent Stability Information

REAGENT NAME	STORAGE	SHELF LIFE
EasySep™ Red Blood Cell Lysis Buffer (1X dilution)	Store at 2 - 8°C. Do not freeze.	Stable for up to 3 months. Do not exceed the expiry date (EXP) of the original component.

Sample Preparation

LEUKOREDUCTION SYSTEM CHAMBER

For optimal cell recovery, LRSC should be shipped and stored at 2 - 8°C. Immediate processing of the LRSC upon arrival is recommended.

Flush LRSC sample from the chamber into a 50 mL conical tube (e.g. Catalog #38010) using phosphate-buffered saline (PBS) containing 2% fetal bovine serum (FBS). Centrifuge at 800 x g for 10 minutes and resuspend the cell pellet in 10 mL of recommended medium. Store the cell suspension at 2 - 8°C until ready to start the cell separation protocol.


Recommended Medium

EasySep™ Buffer (Catalog #20144), RoboSep™ Buffer (Catalog #20104), or PBS containing 2% fetal bovine serum (FBS) and 1 mM EDTA. Medium should be free of Ca++ and Mg++.

Directions for Use – Manual EasySep™ Protocols

See page 1 for Sample Preparation and Recommended Medium. Refer to Tables 1 and 2 for detailed instructions regarding the EasySep™ procedure.

Table 1. EasySep™ HLA Chimerism Buffy Coat CD14 Positive Selection Kit Protocol for LRSC


		EASYSEP™ MAGNET	
STEP	INSTRUCTIONS	“The Big Easy” (Catalog #18001) 	
1	Prepare sample within the volume range.	1 - 4.5 mL	
	Add sample to required tube.	14 mL (17 x 95 mm) polystyrene round-bottom tube (e.g. Catalog #38008)	
2	Add 1X EasySep™ RBC Lysis Buffer to sample.	Equal volume to sample	
3	Add Selection Cocktail to sample. NOTE: Do not vortex cocktail.	50 µL/mL of diluted sample	
	Mix and incubate.	RT for 3 minutes	
4	Vortex RapidSpheres™. NOTE: Particles should appear evenly dispersed.	30 seconds	
5	Add RapidSpheres™ to sample.	50 µL/mL of diluted sample	
	Mix and incubate.	RT for 3 minutes	
6	Add recommended medium to top up the sample to the indicated volume. Mix by gently pipetting up and down 2 - 3 times.	<ul style="list-style-type: none"> • Top up to 5 mL for diluted samples ≤ 4 mL • Top up to 10 mL for diluted samples > 4 mL 	
	Place the tube (without lid) into the magnet and incubate.	RT for 3 minutes	
7	Pick up the magnet, and in one continuous motion invert the magnet and tube,* pouring off the supernatant. Remove the tube from the magnet; this tube contains the isolated cells.	Discard supernatant	
8	Repeat steps as indicated.	Steps 6 and 7, two more times (total of 3 x 3-minute separations)	
9	Resuspend cells in desired medium. Be sure to collect cells from the sides of the tube.	Isolated cells are ready for use	

RT - room temperature (15 - 25°C)

RBC - red blood cell

* Leave the magnet and tube inverted for 2 - 3 seconds, then return upright. Do not shake or blot off any drops that may remain hanging from the mouth of the tube.

Table 2. EasySep™ HLA Chimerism Buffy Coat CD14 Positive Selection Kit Protocol for LRSC

		EASYSEP™ MAGNET	
STEP	INSTRUCTIONS		EasyEights™ (Catalog #18103)
			14 mL tube
1	Prepare sample within the volume range.		1 - 4.5 mL
	Add sample to required tube.		14 mL (17 x 95 mm) polystyrene round-bottom tube (e.g. Catalog #38008)
2	Add 1X EasySep™ RBC Lysis Buffer to sample.		Equal volume to sample
3	Add Selection Cocktail to sample. NOTE: Do not vortex cocktail.		50 µL/mL of diluted sample
	Mix and incubate.		RT for 3 minutes
4	Vortex RapidSpheres™. NOTE: Particles should appear evenly dispersed.		30 seconds
5	Add RapidSpheres™ to sample.		50 µL/mL of diluted sample
	Mix and incubate.		RT for 3 minutes
6	Add recommended medium to top up the sample to the indicated volume. Mix by gently pipetting up and down 2 - 3 times.		<ul style="list-style-type: none"> • Top up to 5 mL for diluted samples ≤ 4 mL • Top up to 10 mL for diluted samples > 4 mL
	Place the tube (without lid) into the magnet and incubate.		RT for 15 minutes
7	Carefully pipette** (do not pour) off the supernatant. Remove the tube from the magnet; this tube contains the isolated cells.		Discard supernatant
8	Repeat steps as indicated.		Steps 6 and 7, two more times (total of 3 x 15-minute separations)
9	Resuspend cells in desired medium. Be sure to collect cells from the sides of the tube.		Isolated cells are ready for use

RT - room temperature (15 - 25°C)


RBC - red blood cell

** Collect the entire supernatant, all at once, into a single pipette (e.g. for the EasyEights™ 14 mL tube, use a 10 mL serological pipette [e.g. Catalog #38004]).

Directions for Use – Fully Automated RoboSep™ Protocol

See page 1 for Sample Preparation and Recommended Medium. Refer to Table 3 for detailed instructions regarding the RoboSep™ procedure.

Table 3. RoboSep™ HLA Chimerism Buffy Coat CD14 Positive Selection Kit Protocol for LRSC

STEP	INSTRUCTIONS	RoboSep™ (Catalog #21000)	
1	Prepare sample within the volume range.	1 - 4.5 mL	
	Add sample to required tube.	14 mL (17 x 95 mm) polystyrene round-bottom tube (e.g. Catalog #38008)	
2	Add 1X EasySep™ RBC Lysis Buffer to sample.	Equal volume to sample	
3	Select protocol.	HLA Chimerism CD14 BC Positive Selection 17878 - LRSC	
4	Vortex RapidSpheres™. NOTE: Particles should appear evenly dispersed.	30 seconds	
5	Load the carousel.	Follow on-screen prompts	
	Start the protocol.	Press the green “Run” button	
6	Unload the carousel when the run is complete. Remove the tube containing the isolated cells and resuspend in desired medium. Be sure to collect cells from the sides of the tube.	Isolated cells are ready for use	

RBC - red blood cell

Notes and Tips

EASYSEP™ RED BLOOD CELL LYSIS BUFFER

EasySep™ Red Blood Cell Lysis Buffer is supplied as a 10X concentrate. Prepare 1X lysis buffer at least 1 hour before use by adding 1 part 10X lysis buffer to 9 parts distilled or Type 1 water*. Mix gently and completely before use.

*Type I water refers to ultrapure water suitable for use in analytical procedures. It is defined by the American Society for Testing and Materials (ASTM) as having a resistivity of > 18 MΩ-cm, a conductivity of < 0.056 µS/cm, and < 50 ppb of total organic carbons (TOC).

ASSESSING PURITY

For purity assessment of CD14+ cells by flow cytometry, use one of the following fluorochrome-conjugated antibody clones:

- Anti-Human CD14 Antibody, Clone M5E2 (Catalog #60004), or
- Anti-Human CD14 Antibody, Clone MoP9 (Catalog #60124)

One of the following methods can also be used:

- Use an alternative marker such as fluorochrome-conjugated Anti-Human CD36 Antibody, Clone FA6-152 (Catalog #60084).
- Use a fluorochrome-conjugated secondary antibody, such as Goat Anti-Mouse IgG (H+L) Antibody, Polyclonal (Catalog #60138).

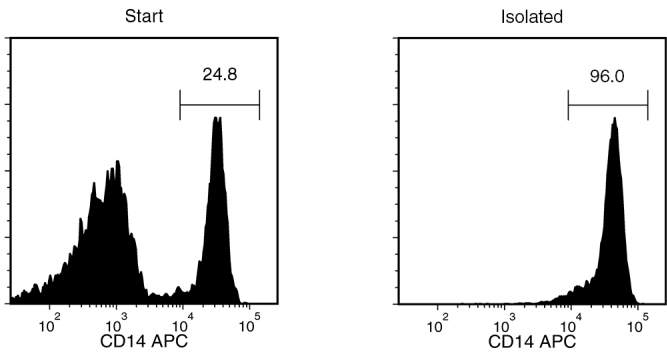
DONOR VARIABILITY

Certain donors express one or more soluble serum factors that can cause cross-linking with magnetic particles. This may result in visible aggregates in the enriched cell fraction following positive selection. These aggregates may appear as a distinct, high side-scatter population on FSC vs. SSC plots during flow cytometry analysis of the enriched fraction. This population consists solely of particles, with no cells or platelets present, as determined by staining with fluorescently labeled antibodies against dextran, CD41, and CD45.

Potential aggregation can be avoided by washing away the donor plasma. Dilute the sample 2-fold in the recommended medium, and centrifuge at 300 x g for 10 minutes. Remove as much plasma as possible without disturbing the white and red blood cells, then resuspend the sample to the original volume with recommended medium before beginning the separation procedure.

If the samples have not been washed, any aggregates can be gated out during flow cytometry analysis of the enriched fraction based on their FSC vs. SSC characteristics, or by their lack of CD45 expression.

Data



Starting with LRSC sample, the CD14+ cell content of the isolated fraction typically ranges from 91.1 - 99.5%. In the above example, the purities of the start and final isolated fractions are 24.8% and 96.0% (gated on CD45), respectively.

NOTE: RBCs were removed from the start sample by lysis prior to flow cytometry.

PRODUCTS ARE FOR RESEARCH USE ONLY AND NOT INTENDED FOR HUMAN OR ANIMAL DIAGNOSTIC OR THERAPEUTIC USES UNLESS OTHERWISE STATED. FOR ADDITIONAL INFORMATION ON QUALITY AT STEMCELL, REFER TO WWW.STEMCELL.COM/COMPLIANCE.

Copyright © 2025 by STEMCELL Technologies Inc. All rights reserved including graphics and images. STEMCELL Technologies & Design, STEMCELL Shield Design, Scientists Helping Scientists, EasyEights, EasySep, RapidSpheres, and RoboSep are trademarks of STEMCELL Technologies Canada Inc. All other trademarks are the property of their respective holders. While STEMCELL has made all reasonable efforts to ensure that the information provided by STEMCELL and its suppliers is correct, it makes no warranties or representations as to the accuracy or completeness of such information.