

# EasySep™ Release APC Positive Selection Kits

For processing 1 x 10<sup>9</sup> cells

Catalog #100-0031 (Human)

Catalog #100-0033 (Mouse)

Positive Selection

Document #1000005480 | Version 02



Scientists Helping Scientists™ | [www.stemcell.com](http://www.stemcell.com)

TOLL FREE PHONE 1 800 667 0322 • PHONE +1 604 877 0713

[INFO@STEMCELL.COM](mailto:INFO@STEMCELL.COM) • [TECHSUPPORT@STEMCELL.COM](mailto:TECHSUPPORT@STEMCELL.COM)

FOR GLOBAL CONTACT DETAILS VISIT OUR WEBSITE

## Description

Isolate highly purified cells labeled with Allophycocyanin (APC)-conjugated antibodies from fresh or previously frozen human peripheral blood mononuclear cells (PBMCs), washed leukapheresis samples, or mouse splenocytes.

- Highly purified cells labeled with APC-conjugated antibodies isolated from human or mouse tissues in less than 40 minutes
- No-wash removal of EasySep™ Releasable RapidSpheres™

These kits target cells labeled with APC-conjugated antibodies (not provided) for positive selection with antibody complexes recognizing APC and EasySep™ Releasable RapidSpheres™. Desired cells are labeled with antibodies and magnetic particles and separated without columns using an EasySep™ magnet. Unwanted cells are simply poured off, while desired cells remain in the tube. Then, bound magnetic particles are removed from the EasySep™-isolated, APC-conjugate antibody-labeled cells, which are immediately available for downstream applications such as flow cytometry, culture, or DNA/RNA extraction. Following cell isolation with these EasySep™ Release kits, antibody complexes remain bound to the cell surface and may interact with Brilliant Violet™ antibody conjugates, polyethylene glycol-modified proteins, or other chemically related ligands.

## Component Descriptions

COMPONENT NAME	COMPONENT #	QUANTITY	STORAGE	SHELF LIFE	FORMAT
EasySep™ Release APC Positive Selection Cocktail	17651C	1 x 1 mL	Store at 2 - 8°C. Do not freeze.	Stable until expiry date (EXP) on label.	A combination of monoclonal antibodies in PBS and 0.1% BSA.
EasySep™ Releasable RapidSpheres™ 50201	50201	1 x 1 mL	Store at 2 - 8°C. Do not freeze.	Stable until expiry date (EXP) on label.	A suspension of magnetic particles in water.
EasySep™ Release Buffer (Concentrate)	20165	3 x 1 mL	Store at 2 - 8°C. Do not freeze.	Stable until expiry date (EXP) on label.	A buffer for release of Releasable RapidSpheres™ from cells following positive selection.
EasySep™ Anti-Human CD32 (Fc gamma RII) Blocker for Positive Selection*	18520	1 x 1 mL	Store at 2 - 8°C. Do not freeze.	Stable until expiry date (EXP) on label.	A combination of monoclonal antibodies in PBS.
OR EasySep™ Mouse FCR Blocker**	18731	1 x 0.5 mL	Store at 2 - 8°C. Do not freeze.	Stable until expiry date (EXP) on label.	A combination of monoclonal antibodies in PBS, 0.1% BSA, and < 0.1% sodium azide.

BSA - bovine serum albumin; PBS - phosphate-buffered saline

\* Supplied only with EasySep™ Release Human APC Positive Selection Kit (Catalog #100-0031)

\*\* Supplied only with EasySep™ Release Mouse APC Positive Selection Kit (Catalog #100-0033)

Components may be shipped at room temperature (15 - 25°C) but should be stored as indicated above.

## Sample Preparation

For available fresh and frozen samples, see [www.stemcell.com/primarycells](http://www.stemcell.com/primarycells).

### HUMAN PERIPHERAL BLOOD

Prepare a PBMC suspension from whole blood by centrifugation over a density gradient medium (e.g. Lymphoprep™, Catalog #07801). For more rapid PBMC preparation, use the SepMate™ RUO (Catalog #86450/86415) or SepMate™ IVD\* (Catalog #85450/85415) cell isolation tube.

If using previously frozen PBMCs, incubate the cells with DNase I Solution (Catalog #07900) at a concentration of 100 µg/mL at room temperature (15 - 25°C) for at least 15 minutes prior to labeling and separation. Filter aggregated suspensions through a 37 µm cell strainer (e.g. Catalog #27215) for optimal results.

After preparation, resuspend cells at  $1 \times 10^8$  cells/mL in recommended medium.

\* SepMate™ IVD is only available in select regions where it is registered as an In Vitro Diagnostic (IVD) device for the isolation of mononuclear cells (MNCs) from whole blood or bone marrow by density gradient centrifugation. In all other regions, SepMate™ is available for research use only (RUO).

### HUMAN LEUKAPHERESIS

Wash the peripheral blood leukapheresis sample by adding an equivalent volume of recommended medium or PBS containing 2% fetal bovine serum (FBS). Centrifuge at 500 x g for 10 minutes at room temperature (15 - 25°C). If red blood cell (RBC) lysis is necessary, lyse with Ammonium Chloride Solution (Catalog #07800). If platelet removal is necessary, centrifuge at 120 x g for 10 minutes with the brake off. Remove the supernatant and resuspend the cells at  $1 \times 10^8$  cells/mL in recommended medium.

### MOUSE SPLEEN

Disrupt spleen in recommended medium. Remove aggregates and debris by passing cell suspension through a 70 µm mesh nylon strainer (e.g. Catalog #27216). Centrifuge at 300 x g for 10 minutes and resuspend at  $1 \times 10^8$  nucleated cells/mL in recommended medium.

Ammonium chloride treatment is not recommended when preparing the cells for separation.

### OTHER SAMPLE SOURCES

If using other sample sources or tissues, contact us at [techsupport@stemcell.com](mailto:techsupport@stemcell.com) for more information.



## Recommended Medium



EasySep™ Buffer (Catalog #20144), or PBS containing 2% FBS and 1 mM EDTA. Medium should be free of Ca<sup>++</sup> and Mg<sup>++</sup>.

## Directions for Use – Manual EasySep™ Protocols

See page 2 for Sample Preparation and Recommended Medium. Refer to Tables 1 and 2 for detailed instructions regarding the EasySep™ procedure for each magnet.

**Table 1. EasySep™ Release Human APC Positive Selection Kit or EasySep™ Release Mouse APC Positive Selection Kit Protocol**

		EASYSEP™ MAGNETS	
STEP	INSTRUCTIONS	 EasySep™ (Catalog #18000)	 “The Big Easy” (Catalog #18001)
1	Dilute Release Buffer (Concentrate) to prepare release buffer (1X).	Dilute 1 in 40 with recommended medium. NOTE: Release buffer (1X) must be prepared on the day of use. Refer to step 12 for required volume.	Dilute 1 in 40 with recommended medium. NOTE: Release buffer (1X) must be prepared on the day of use. Refer to step 12 for required volume.
2	Prepare sample at the indicated cell concentration within the volume range.	1 x 10 <sup>8</sup> cells/mL 0.25 - 2 mL	1 x 10 <sup>8</sup> cells/mL 0.5 - 8 mL
3	Add sample to required tube.	5 mL (12 x 75 mm) polystyrene round-bottom tube (e.g. Catalog #38007)	14 mL (17 x 95 mm) polystyrene round-bottom tube (e.g. Catalog #38008)
4	If isolating mouse cells (Catalog #100-0033), add Mouse FcR Blocker to sample. NOTE: Titration of mouse FcR blocker may be required. OR If isolating human cells (Catalog #100-0031), add FcR blocker to sample.	40 µL/mL of sample  OR 100 µL /mL of sample	40 µL/mL of sample  OR 100 µL/mL of sample
5	Add APC-conjugated antibody to sample.*	0.25 - 2 µg/mL of sample	0.25 - 2 µg/mL of sample
	Mix and incubate.	RT for 5 minutes	RT for 5 minutes
OPTIONAL WASH STEP may improve performance. Add recommended medium to top up the sample to the indicated volume and centrifuge. Resuspend sample in original volume.		Top up with 2-fold excess recommended medium and centrifuge at 300 x g for 10 minutes at RT with low brake. Carefully aspirate and discard supernatant. Resuspend in the same volume as step 2.	Top up with 2-fold excess recommended medium and centrifuge at 300 x g for 10 minutes at RT with low brake. Carefully aspirate and discard supernatant. Resuspend in the same volume as step 2.
6	Add Selection Cocktail to sample.** NOTE: Do not vortex cocktail.	25 - 100 µL/mL of sample	25 - 100 µL/mL of sample
	Mix and incubate.	RT for 5 minutes	RT for 5 minutes
7	Vortex RapidSpheres™. NOTE: Particles should appear evenly dispersed.	30 seconds	30 seconds
8	Add RapidSpheres™ to sample.	100 µL/mL of sample	100 µL/mL of sample
	Mix and incubate.	RT for 3 minutes	RT for 3 minutes
Continue to step 9, next page		Continue to step 9, next page	Continue to step 9, next page

		EASYSEP™ MAGNETS	
STEP	INSTRUCTIONS (CONTINUED)	 EasySep™ (Catalog #18000)	 "The Big Easy" (Catalog #18001)
9	Add recommended medium to top up the sample to the indicated volume. Mix by gently pipetting up and down 2 - 3 times.	Top up to 2.5 mL	<ul style="list-style-type: none"> <li>• Top up to 5 mL for samples &lt; 4 mL</li> <li>• Top up to 10 mL for samples ≥ 4 mL</li> </ul>
	Place the tube (without lid) into the magnet and incubate.	RT for 5 minutes	RT for 5 minutes
10	Pick up the magnet, and in one continuous motion invert the magnet and tube,‡ pouring off the supernatant. Remove the tube from the magnet; this tube contains the isolated cells.	Discard supernatant	Discard supernatant
11	Repeat steps as indicated.	Steps 9 and 10, two more times (total of 3 x 5-minute separations)	Steps 9 and 10, two more times (total of 3 x 5-minute separations)
12	Add release buffer (1X) to top up the sample to the indicated volume. Mix by gently pipetting up and down 2 - 3 times.	Top up to 2.5 mL	<ul style="list-style-type: none"> <li>• Top up to 5 mL for start sample &lt; 4 mL</li> <li>• Top up to 10 mL for start sample ≥ 4 mL</li> </ul>
	Incubate.	RT for 3 minutes	RT for 3 minutes
13	Place the tube (without lid) into the magnet and incubate.	RT for 5 minutes	RT for 5 minutes
14	Pick up the magnet, and in one continuous motion invert the magnet and tube,‡ pouring the enriched cell suspension into a new tube.	Isolated cells (in the new tube) are ready for use	Isolated cells (in the new tube) are ready for use




RT - room temperature (15 - 25°C)




\* Titrate APC-conjugated antibody for optimal purity and recovery. Contact us at techsupport@stemcell.com for more information.

\*\* Titrate EasySep™ Release APC Positive Selection Cocktail for optimal purity and recovery. Contact us at techsupport@stemcell.com for more information.

‡ Leave the magnet and tube inverted for 2 - 3 seconds, then return upright. Do not shake or blot off any drops that may remain hanging from the mouth of the tube.

Table 2. EasySep™ Release Human APC Positive Selection Kit or EasySep™ Release Mouse APC Positive Selection Kit Protocol

STEP	INSTRUCTIONS	EASYSEP™ MAGNETS		
		 EasyPlate™ (Catalog #18102)	 EasyEights™ (Catalog #18103)	
			5 mL tube	14 mL tube
1	Dilute Release Buffer (Concentrate) to prepare release buffer (1X).	Dilute 1 in 40 with recommended medium. NOTE: Release buffer (1X) must be prepared on the day of use. Refer to step 12 for required volume.	Dilute 1 in 40 with recommended medium. NOTE: Release buffer (1X) must be prepared on the day of use. Refer to step 12 for required volume.	Dilute 1 in 40 with recommended medium. NOTE: Release buffer (1X) must be prepared on the day of use. Refer to step 12 for required volume.
2	Prepare sample at the indicated cell concentration within the volume range.	1 x 10 <sup>8</sup> cells/mL 0.05 - 0.2 mL	1 x 10 <sup>8</sup> cells/mL 0.25 - 2 mL	1 x 10 <sup>8</sup> cells/mL 0.5 - 8 mL
3	Add sample to required tube (or plate when using the EasyPlate™ EasySep™ Magnet).	Round-bottom, non-tissue culture-treated 96-well plate (e.g. Catalog #38018)	5 mL (12 x 75 mm) polystyrene round-bottom tube (e.g. Catalog #38007)	14 mL (17 x 95 mm) polystyrene round-bottom tube (e.g. Catalog #38008)
4	If isolating mouse cells (Catalog #100-0033), add Mouse FcR Blocker to sample. NOTE: Titration of mouse FcR blocker may be required. OR If isolating human cells (Catalog #100-0031), add FcR blocker to sample.	40 µL/mL of sample  OR 100 µL/mL of sample	40 µL/mL of sample  OR 100 µL/mL of sample	40 µL/mL of sample  OR 100 µL/mL of sample
5	Add APC-conjugated antibody to sample.*	0.25 - 2 µg/mL of sample	0.25 - 2 µg/mL of sample	0.25 - 2 µg/mL of sample
	Mix and incubate.	RT for 5 minutes	RT for 5 minutes	RT for 5 minutes
OPTIONAL WASH STEP may improve performance. Add recommended medium to top up the sample to the indicated volume and centrifuge. Resuspend sample in original volume.		Top up with 2-fold excess recommended medium and centrifuge at 300 x g for 10 minutes at RT with low brake. Carefully aspirate and discard supernatant. Resuspend in the same volume as step 2.	Top up with 2-fold excess recommended medium and centrifuge at 300 x g for 10 minutes at RT with low brake. Carefully aspirate and discard supernatant. Resuspend in the same volume as step 2.	Top up with 2-fold excess recommended medium and centrifuge at 300 x g for 10 minutes at RT with low brake. Carefully aspirate and discard supernatant. Resuspend in the same volume as step 2.
6	Add Selection Cocktail to sample.** NOTE: Do not vortex cocktail.	25 - 100 µL/mL of sample	25 - 100 µL/mL of sample	25 - 100 µL/mL of sample
	Mix and incubate.	RT for 5 minutes	RT for 5 minutes	RT for 5 minutes
7	Vortex Releasable RapidSpheres™. NOTE: Particles should appear evenly dispersed.	30 seconds	30 seconds	30 seconds
8	Add Releasable RapidSpheres™ to sample.	100 µL/mL of sample	100 µL/mL of sample	100 µL/mL of sample
	Mix and incubate.	RT for 3 minutes	RT for 3 minutes	RT for 3 minutes
Continue to step 9, next page		Continue to step 9, next page	Continue to step 9, next page	Continue to step 9, next page

		EASYSEP™ MAGNETS		
STEP	INSTRUCTIONS (CONTINUED)	 <b>EasyPlate™ (Catalog #18102)</b>	<b>EasyEights™ (Catalog #18103)</b>	
			 <b>5 mL tube</b>	 <b>14 mL tube</b>
9	Add recommended medium to top up sample to the indicated volume. Mix by gently pipetting up and down 2 - 3 times.	Top up to 0.25 mL	Top up to 2.5 mL	<ul style="list-style-type: none"> <li>• Top up to 5 mL for samples &lt; 4 mL</li> <li>• Top up to 10 mL for samples ≥ 4 mL</li> </ul>
	Place the tube or plate (without lid) into the magnet and incubate.	RT for 5 minutes	RT for 10 minutes <sup>‡</sup>	RT for 10 minutes <sup>‡</sup>
10	Carefully pipette*** (do not pour) off the supernatant. Remove the tube or plate, containing the isolated cells, from the magnet.	Discard supernatant	Discard supernatant	Discard supernatant
11	Repeat steps as indicated.	Steps 9 and 10, two more times (total of 3 x 5-minute separations)	Steps 9 and 10, two more times (total of 3 x 10-minute separations)	Steps 9 and 10, two more times (total of 3 x 10-minute separations)
12	Add release buffer (1X) to top up the sample to the indicated volume. Mix by gently pipetting up and down 2 - 3 times.	Top up to 0.25 mL	Top up to 2.5 mL	<ul style="list-style-type: none"> <li>• Top up to 5 mL for samples ≤ 4 mL</li> <li>• Top up to 10 mL for samples &gt; 4 mL</li> </ul>
	Mix and incubate.	RT for 3 minutes	RT for 3 minutes	RT for 3 minutes
13	Place the tube or plate (without lid) into the magnet and incubate.	RT for 5 minutes	RT for 10 minutes <sup>‡</sup>	RT for 10 minutes <sup>‡</sup>
14	Carefully pipette*** (do not pour) the enriched cell suspension into a new tube.	Isolated cells (in the new tube) are ready for use	Isolated cells (in the new tube) are ready for use	Isolated cells (in the new tube) are ready for use

RT - room temperature (15 - 25°C)

\* Titrate APC-conjugated antibody for optimal purity and recovery. Contact us at techsupport@stemcell.com for more information.

\*\* Titrate EasySep™ Release APC Positive Selection Cocktail for optimal purity and recovery. Contact us at techsupport@stemcell.com for more information.

‡ Incubation time may be reduced to 5 minutes for some samples.

\*\*\* Collect the entire supernatant, all at once, into a single pipette (e.g. for EasyEights™ 5 mL tube, use a 2 mL serological pipette [Catalog #38002]; for EasyEights™ 14 mL tube, use a 10 mL serological pipette [Catalog #38004]).



## Notes and Tips

### EASYSEP™ RELEASE BUFFER

EasySep™ Release Buffer (Concentrate) is supplied as a 40X concentrate; release buffer (1X) must be prepared on the day of use. To prepare release buffer (1X), dilute an appropriate volume 1 in 40 with recommended medium. Refer to step 12 of Table 1 or Table 2 for required volume.

### OPTIMIZING PURITY AND RECOVERY

In some cases, titration of the APC-conjugated antibody (not provided) and EasySep™ Release APC Positive Selection Cocktail may be required to achieve optimal purity and recovery. Contact us at [techsupport@stemcell.com](mailto:techsupport@stemcell.com) for more information.

Recovery of positively selected cells is also dependent on the quality of APC-conjugated antibody (not provided) used for positive selection. Antibodies that have expired or that have been stored improperly may show lower affinity for the surface marker on the target cell, resulting in lower recovery.

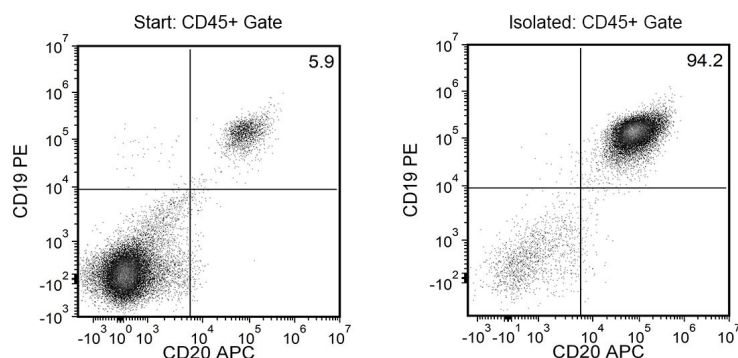
### ASSESSING PURITY

For purity assessment of APC-conjugated cells by flow cytometry, use one of the following methods:

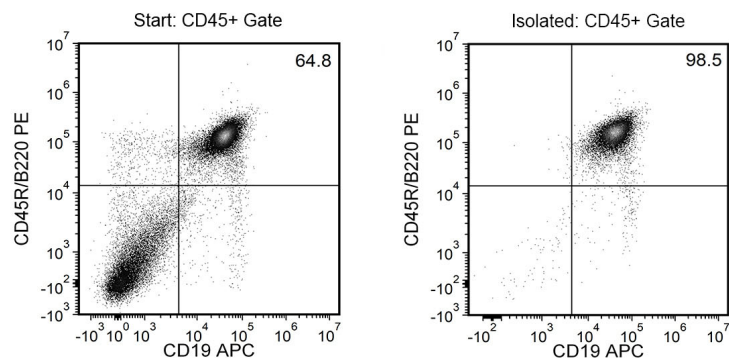
- Add fluorochrome-conjugated antibody to label the selected cells.  
NOTE: The APC-conjugated antibody may block the labeling antibody.
- Use fluorochrome-conjugated antibodies to alternative cell surface markers.
- Use a fluorochrome-conjugated secondary antibody, such as Goat Anti-Mouse IgG (H+L) Antibody, Polyclonal (Catalog #60138).

NOTE: Brilliant Violet™ antibody conjugates should be carefully titrated on EasySep™ Release-isolated cells prior to analysis by flow cytometry or fluorescence microscopy. For purity assessment with Brilliant Violet™ antibody conjugates, use of BD Horizon Brilliant™ Stain Buffer is recommended to reduce non-specific interactions. For more information, refer to the manufacturer's instructions or contact us at [techsupport@stemcell.com](mailto:techsupport@stemcell.com).

## Data



Starting with fresh human PBMCs, the purities of the start and final isolated fractions are 5.9% and 94.2%, respectively, using an APC-conjugated anti-human CD19 antibody and EasySep™ Release Human APC Positive Selection Kit (as assessed by labeling with CD19 and CD20).



Starting with mouse splenocytes, the purities of the start and final isolated fractions are 64.8% and 98.5%, respectively, using an APC-conjugated anti-mouse CD19 antibody and EasySep™ Release Mouse APC Positive Selection Kit (as assessed by labeling with CD19 and CD45R/B220).

PRODUCTS ARE FOR RESEARCH USE ONLY AND NOT INTENDED FOR HUMAN OR ANIMAL DIAGNOSTIC OR THERAPEUTIC USES UNLESS OTHERWISE STATED. FOR ADDITIONAL INFORMATION ON QUALITY AT STEMCELL, REFER TO [WWW.STEMCELL.COM/COMPLIANCE](http://WWW.STEMCELL.COM/COMPLIANCE).

Copyright © 2023 by STEMCELL Technologies Inc. All rights reserved including graphics and images. STEMCELL Technologies & Design, STEMCELL Shield Design, Scientists Helping Scientists, EasyEights, EasyPlate, EasySep, RapidSpheres, and SepMate are trademarks of STEMCELL Technologies Canada Inc. Lymphoprep is a trademark of Serumwerk Bernburg AG. The products sold under the Lymphoprep brand name are also manufactured by Serumwerk Bernburg AG. All other trademarks are the property of their respective holders. Brilliant Violet is a trademark of Sirigen Group Ltd. BD Horizon Brilliant is a trademark of Becton, Dickinson, and Company. Users of this kit should ensure that they are entitled to use the antibody of interest. STEMCELL Technologies Inc. is not responsible for patent infringements or violations that may occur when using this product. While STEMCELL has made all reasonable efforts to ensure that the information provided by STEMCELL and its suppliers is correct, it makes no warranties or representations as to the accuracy or completeness of such information.