



Positive Selection
Catalog #17892

**EasySep™ Human
Extracellular Vesicle (CD81)
Positive Selection Kit**

For processing 20 mL of biofluid



Scientists Helping Scientists™ | WWW.STEMCELL.COM

TOLL FREE PHONE 1 800 667 0322 • PHONE +1 604 877 0713
INFO@STEMCELL.COM • TECHSUPPORT@STEMCELL.COM
FOR GLOBAL CONTACT DETAILS VISIT OUR WEBSITE

Document #1000005331 | Version 00

Description

Isolate human CD81 extracellular vesicle (EVs) from plasma, serum, and cell culture conditioned medium by immunomagnetic positive selection.

- Fast and easy-to-use
- No columns required

This kit targets EVs for positive selection with an antibody recognizing the specific tetraspanin marker CD81. Desired EVs are labeled with antibodies and magnetic particles, and separated without columns using an EasySep™ magnet. Unwanted biofluid components are simply poured off, while desired EVs remain in the tube. Following positive selection, particles should not be released from EVs. The final isolated fraction contains highly purified EVs that are immediately available for downstream applications such as DNA/RNA extraction, Western blot, or mass spectrometry.

Component Descriptions

COMPONENT NAME	COMPONENT #	QUANTITY	STORAGE	SHELF LIFE	FORMAT
EasySep™ Human CD81 Positive Selection Cocktail	17892C	1 x 1 mL	Store at 2 - 8°C. Do not freeze.	Stable until expiry date (EXP) on label.	A combination of monoclonal antibodies in PBS.
EasySep™ Releasable RapidSpheres™ 50201	50201	2 x 1 mL	Store at 2 - 8°C. Do not freeze.	Stable until expiry date (EXP) on label.	A suspension of magnetic particles in water.

PBS - phosphate-buffered saline

Components may be shipped at room temperature (15 - 25°C) but should be stored as indicated above.

Sample Preparation

For available fresh and frozen samples, see www.stemcell.com/primarycells.

PLASMA (FROM WHOLE BLOOD)

1. Centrifuge whole blood at 2000 x g for 10 minutes. Remove the plasma layer and transfer to a new tube.
2. Centrifuge the plasma layer (from step 1) at 2000 x g for 10 minutes. Remove the plasma supernatant and transfer to a new tube.
3. Centrifuge plasma supernatant at 10,000 x g for 30 minutes to remove cellular debris and large vesicles. Remove plasma supernatant and transfer to the required tube (see Table 1).

OPTIONAL: If desired, plasma can be filtered using a 0.2 µm filter prior to isolation.

CONDITIONED MEDIUM

1. Harvest conditioned medium and transfer to a 50 mL conical tube (e.g. Catalog #38010).
2. Centrifuge the conditioned medium at 2000 x g for 10 minutes. Remove the supernatant and transfer to a new tube.
3. Centrifuge supernatant at 10,000 x g for 30 minutes. Remove the supernatant and transfer to the required tube (see Table 1).

OPTIONAL: If desired, supernatant can be filtered using a 0.2 µm filter prior to isolation.



Recommended Medium

D-PBS (Without Ca⁺⁺ and Mg⁺⁺; Catalog #37350)

Directions for Use – Manual EasySep™ Protocols

See page 1 for Sample Preparation and Recommended Medium. Refer to Table 1 for detailed instructions regarding the EasySep™ procedure for each magnet.

Table 1. EasySep™ Human Extracellular Vesicle (CD81) Positive Selection Kit Protocol

		EASYSEP™ MAGNETS	
STEP	INSTRUCTIONS	 EasySep™ (Catalog #18000)	 “The Big Easy” (Catalog #18001)
1	Add sample to required tube.	0.5 - 2 mL	1 - 8 mL
	Required tube.	5 mL (12 x 75 mm) polystyrene round-bottom tube (e.g. Catalog #38007)	14 mL (17 x 95 mm) polystyrene round-bottom tube (e.g. Catalog #38008)
2	Add Selection Cocktail to sample.	50 µL/mL of sample	50 µL/mL of sample
	Mix and incubate.	RT for 10 minutes	RT for 10 minutes
3	Vortex Releasable RapidSpheres™. NOTE: Particles should appear evenly dispersed.	30 seconds	30 seconds
4	Add Releasable RapidSpheres™ to sample.	100 µL/mL of sample	100 µL/mL of sample
	Mix and incubate.	RT for 10 minutes	RT for 10 minutes
5	Add recommended medium to top up the sample to the indicated volume. Mix by gently pipetting up and down 2 - 3 times.	Top up to 2.5 mL	<ul style="list-style-type: none"> • Top up to 5 mL for samples < 4 mL • Top up to 10 mL for samples ≥ 4 mL
	Place the tube (without lid) into the magnet and incubate.	RT for 5 minutes	RT for 5 minutes
6	Pick up the magnet, and in one continuous motion invert the magnet and tube,* pouring off the supernatant. Note: Do not remove the tube from the magnet between separations.	Discard supernatant	Discard supernatant
7	Add recommended medium to top up the sample to the indicated volume. Mix by gently pipetting up and down 2 - 3 times.	Top up to 2.5 mL	<ul style="list-style-type: none"> • Top up to 5 mL for samples < 4 mL • Top up to 10 mL for samples ≥ 4 mL
	Incubate.	RT for 1 minute	RT for 1 minute
8	Pick up the magnet, and in one continuous motion invert the magnet and tube,* pouring off the supernatant. Note: Do not remove the tube from the magnet between separations.	Discard supernatant Note: If starting sample is conditioned medium, skip to step 10; no need for repeated separations	Discard supernatant Note: If starting sample is conditioned medium, skip to step 10; no need for repeated separations
9	Repeat steps as indicated.	Steps 7 and 8, two more times (total of 1 x 5-minute and 3 x 1-minute separations)	Steps 7 and 8, two more times (total of 1 x 5-minute and 3 x 1-minute separations)
10	Remove the tube from the magnet. Resuspend EVs in desired medium. Be sure to collect the EVs from the sides of the tube.	Isolated EVs are ready for use	Isolated EVs are ready for use

RT - room temperature (15 - 25°C)

* Leave the magnet and tube inverted for 2 - 3 seconds, then return upright. Do not shake or blot off any drops that may remain hanging from the mouth of the tube.

Notes and Tips

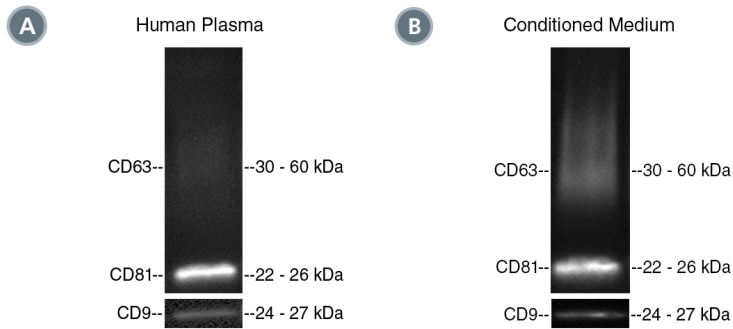
For assessment of CD81 tetraspanin marker by Western blot immunostaining, use the following enzyme or fluorochrome-conjugated antibody clone:

- Anti-human CD81 antibody, clone 5A6

BIOFLUID VARIABILITY

Types and levels of tetraspanin expression on EVs within and between biofluid samples can be variable. This may affect isolation yields and tetraspanin data obtained in subsequent analyses.

Data



The Western blot analyses in the above examples show positive isolation of EVs with the CD81 tetraspanin marker from (A) human plasma and (B) conditioned medium.

STEMCELL TECHNOLOGIES INC.'S QUALITY MANAGEMENT SYSTEM IS CERTIFIED TO ISO 13485. PRODUCTS ARE FOR RESEARCH USE ONLY AND NOT INTENDED FOR HUMAN OR ANIMAL DIAGNOSTIC OR THERAPEUTIC USES UNLESS OTHERWISE STATED.

Copyright © 2019 by STEMCELL Technologies Inc. All rights reserved including graphics and images. STEMCELL Technologies & Design, STEMCELL Shield Design, Scientists Helping Scientists, EasySep, and RapidSpheres are trademarks of STEMCELL Technologies Canada Inc. All other trademarks are the property of their respective holders. While STEMCELL has made all reasonable efforts to ensure that the information provided by STEMCELL and its suppliers is correct, it makes no warranties or representations as to the accuracy or completeness of such information.