


Directions for Use – Fully Automated RoboSep™ Protocol

See page 1 for Sample Preparation and Recommended Medium. Refer to Table 3 for detailed instructions regarding the RoboSep™ procedure.

Table 3. RoboSep™ Human T Cell Isolation Kit Protocol

STEP	INSTRUCTIONS	RoboSep™ (Catalog #20000 and #21000)	
1	Prepare sample at the indicated cell concentration within the volume range.	5 x 10 ⁷ cells/mL 0.5 - 8.5 mL	
	Add sample to required tube.	14 mL (17 x 95 mm) polystyrene round-bottom tube (e.g. Catalog #38008)	
2	Select protocol.	Human T Cell Isolation 17951	
3	Vortex RapidSpheres™. NOTE: Particles should appear evenly dispersed.	30 seconds	
4	Load the carousel.	Follow on-screen prompts	
	Start the protocol.	Press the green “Run” button	
5	Unload the carousel when the run is complete.	Isolated cells are ready for use	

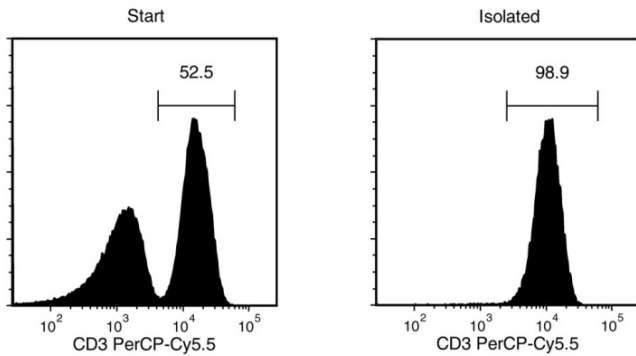
Notes and Tips

ASSESSING PURITY

For purity assessment of CD3+ T cells by flow cytometry, use the following fluorochrome-conjugated antibody clones:

- Anti-Human CD3 Antibody, Clone UCHT1 (Catalog #60011), or
- Anti-Human CD4 Antibody, Clone OKT4 (Catalog #60016), and Anti-Human CD8a Antibody, Clone RPA-T8 (Catalog #60022)

Data



Starting with human PBMCs, the T cell content (CD3+) of the isolated fraction is typically 96.7 ± 1.5% (mean ± SD using the purple EasySep™ Magnet). In the above example, the purities of the start and final isolated fractions are 52.5% and 98.9%, respectively.

STEMCELL TECHNOLOGIES INC.'S QUALITY MANAGEMENT SYSTEM IS CERTIFIED TO ISO 13485. PRODUCTS ARE FOR RESEARCH USE ONLY AND NOT INTENDED FOR HUMAN OR ANIMAL DIAGNOSTIC OR THERAPEUTIC USES UNLESS OTHERWISE STATED.

Copyright © 2019 by STEMCELL Technologies Inc. All rights reserved including graphics and images. STEMCELL Technologies & Design, STEMCELL Shield Design, Scientists Helping Scientists, EasyEights, EasyPlate, EasySep, RapidSpheres, RoboSep, and SepMate are trademarks of STEMCELL Technologies Canada Inc. Lymphoprep is a trademark of Alere Technologies. All other trademarks are the property of their respective holders. While STEMCELL has made all reasonable efforts to ensure that the information provided by STEMCELL and its suppliers is correct, it makes no warranties or representations as to the accuracy or completeness of such information.