

EasySep™ Human Memory B Cell Isolation Kit

For processing 2×10^9 cells

Catalog # 17864

Positive Selection

Document #1000005290 | Version 03

Description

Isolate highly purified memory B cells from fresh or previously frozen human peripheral blood mononuclear cells (PBMCs) or leukapheresis samples by immunomagnetic positive selection.

- x Highly purified human memory B cells isolated in as little as 40 minutes
- x No-wash removal of EasySep™ Releasable RapidSpheres™
- x Optional isolation of untouched naïve B cells from the same sample

First, CD27+ cells are isolated by column-free immunomagnetic positive selection using antibody complexes and EasySep™ Releasable RapidSpheres™. Then, bound magnetic particles are removed from the EasySep™-isolated CD27+ cells, and unwanted non-B cells are targeted for depletion using antibody complexes and EasySep™ Dextran RapidSpheres™. The final isolated fraction contains highly purified CD27+ memory B cells that are immediately ready for downstream applications. An optional protocol allows for the isolation of naïve B cells in parallel for use in functional studies. Following cell isolation with this EasySep™ release kit, antibody complexes remain bound to the cell surface and may interact with Brilliant Violet™ antibody conjugates, polyethylene glycol-modified proteins, or other chemically related ligands.

Component Descriptions

COMPONENT NAME	COMPONENT #	QUANTITY	STORAGE	SHELF LIFE	FORMAT
EasySep™ Human CD27 Positive Selection Cocktail	17864C	1 x 1 mL	Store at 2 - 8°C. Do not freeze.	Stable until expiry date (EXP) on label.	A combination of monoclonal antibodies in PBS and 0.1% BSA. Includes an Fc receptor blocking antibody.
EasySep™ Human Memory B Cell Pre-Enrichment Cocktail	17454C	2 x 1 mL	Store at 2 - 8°C. Do not freeze.	Stable until expiry date (EXP) on label.	A combination of monoclonal antibodies in PBS.
EasySep™ Releasable RapidSpheres™ 50201	50201	2 x 1 mL	Store at 2 - 8°C. Do not freeze.	Stable until expiry date (EXP) on label.	A suspension of magnetic particles in water.
EasySep™ Dextran RapidSpheres™ 50103	50103	2 x 1 mL	Store at 2 - 8°C. Do not freeze.	Stable until expiry date (EXP) on label.	A suspension of magnetic particles in water.
EasySep™ Release Buffer	20145	2 x 1 mL	Store at 2 - 8°C. Do not freeze.	Stable until expiry date (EXP) on label.	A buffer for release of Releasable RapidSpheres™ from cells following positive selection.

BSA - bovine serum albumin; PBS - phosphate-buffered saline

Components may be shipped at room temperature (15 - 25°C) but should be stored as indicated above.

Sample Preparation

For available fresh and frozen samples, see www.stemcell.com/primarycells.

PERIPHERAL BLOOD

Prepare a PBMC suspension from whole blood by centrifugation over a density gradient medium (e.g. Lymphoprep™, Catalog #07801). For more rapid PBMC preparation, use the SepMate™ RUO (Catalog #86450/86415) or SepMate™ IVD* (Catalog #85450/85415) cell isolation tube.

If using previously frozen PBMCs, incubate the cells with DNase I Solution (Catalog #07900) at a concentration of 100 µg/mL at room temperature (15 - 25°C) for at least 15 minutes prior to labeling and separation. Filter aggregated suspensions through a 37 µm cell strainer (Catalog #27250) for optimal results.

After preparation, resuspend cells at 1×10^8 cells/mL in recommended medium.

* SepMate™ IVD is only available in select regions where it is registered as an In Vitro Diagnostic (IVD) device for the isolation of mononuclear cells (MNCs) from whole blood or bone marrow by density gradient centrifugation. In all other regions SepMate™ is available for research use only (RUO).

LEUKAPHERESIS

1. Add an equal volume of Ammonium Chloride Solution (Catalog #07800) to the Leukopak.

NOTE: If working with large volumes (> 150 mL), concentrate the Leukopak first by centrifuging at 500 x g for 10 minutes. Remove the supernatant and resuspend the cells in 1/10th of the original Leukopak volume with recommended medium (e.g. for 300 mL of cells, resuspend in 30 mL of recommended medium and add 30 mL of Ammonium Chloride Solution). For small volumes (\leq 150 mL), add Ammonium Chloride Solution directly to the Leukopak.

2. Incubate on ice for 15 minutes.
3. Centrifuge at 500 x g for 10 minutes at room temperature (15 - 25°C). Remove the supernatant.
4. Wash the cells by topping up the tube with recommended medium. Centrifuge the cells at 150 x g for 10 minutes at room temperature with the brake off. Carefully remove the supernatant.
5. Repeat step 4 one or more times until most of the platelets have been removed (indicated by a clear supernatant).
6. Resuspend the cells at 1×10^8 cells/mL in recommended medium.



Recommended Medium



EasySep™ Buffer (Catalog #20144) or PBS containing 2% fetal bovine serum (FBS) and 1 mM EDTA. Medium should be free of Ca^{++} and Mg^{++} .

Directions for Use – Manual EasySep™ Protocols

See page 1 for Sample Preparation and Recommended Medium. Refer to Tables 1 and 2 for detailed instructions regarding the EasySep™ procedure for each magnet.

Table 1. EasySep™ Human Memory B Cell Isolation Kit Protocol

		EASYSEP™ MAGNETS	
STEP	INSTRUCTIONS	 EasySep™ (Catalog #18000)	 “The Big Easy”™ (Catalog #18001)
1	Prepare sample at the indicated cell concentration within the volume range.	1 x 10 ⁸ cells/mL 0.5 - 1 mL	1 x 10 ⁸ cells/mL 0.5 - 6 mL
	Add sample to required tube.	5 mL (12 x 75 mm) polystyrene round-bottom tube (e.g. Catalog #38007)	14 mL (17 x 95 mm) polystyrene round-bottom tube (e.g. Catalog #38008)
2	Add CD27 Positive Selection Cocktail to sample.	50 µL/mL of sample	50 µL/mL of sample
	Mix and incubate.	RT for 3 minutes	RT for 3 minutes
3	Vortex Releasable RapidSpheres™. NOTE: Particles should appear evenly dispersed.	30 seconds	30 seconds
	Add Releasable RapidSpheres™ to sample and mix.	100 µL/mL of sample	100 µL/mL of sample
4	Add Memory B Cell Pre-Enrichment Cocktail to sample.	100 µL/mL of sample	100 µL/mL of sample
	Mix and incubate.	RT for 5 minutes	RT for 5 minutes
5	Add recommended medium to top up the sample to the indicated volume. Mix by gently pipetting up and down 2 - 3 times.	Top up to 2.5 mL	<ul style="list-style-type: none"> • Top up to 5 mL for samples < 4 mL • Top up to 10 mL for samples ≥ 4 mL
	Place the tube (without lid) into the magnet and incubate.	RT for 5 minutes	RT for 5 minutes
6	Pick up the magnet, and in one continuous motion invert the magnet and tube,* pouring the supernatant into a new tube.	Use a new 5 mL tube Set aside supernatant for isolating naïve B cells (Table 3) if desired	Use a new 14 mL tube Set aside supernatant for isolating naïve B cells (Table 3) if desired
7	Remove the tube from the magnet and add recommended medium to top up the sample to the indicated volume. Mix by gently pipetting up and down 2 - 3 times.	Top up to 2.5 mL	<ul style="list-style-type: none"> • Top up to 5 mL for samples < 4 mL • Top up to 10 mL for samples ≥ 4 mL
	Place the tube (without lid) into the magnet and incubate.	RT for 3 minutes	RT for 3 minutes
8	Pick up the magnet, and in one continuous motion invert the magnet and tube,* pouring off the supernatant.	Discard supernatant	Discard supernatant
9	Repeat steps as indicated.	Steps 7 and 8, two more times (total of 1 x 5-minute and 3 x 3-minute separations)	Steps 7 and 8, two more times (total of 1 x 5-minute and 3 x 3-minute separations)
Continue to step 10, next page		Continue to step 10, next page	Continue to step 10, next page

		EASYSEP™ MAGNETS	
STEP	INSTRUCTIONS (CONTINUED)	 EasySep™ (Catalog #18000)	 “The Big Easy” (Catalog #18001)
10	Remove the tube from the magnet and add recommended medium to top up the sample to the indicated volume. Mix by gently pipetting up and down 2 - 3 times. Be sure to collect cells off the sides of the tube.	Same volume as the original starting sample volume (i.e. same volume used in step 1)	Same volume as the original starting sample volume (i.e. same volume used in step 1)
11	Add Release Buffer to sample.	100 µL/mL of sample	100 µL/mL of sample
	Mix and incubate.	RT for 5 minutes	RT for 5 minutes
12	Vortex Dextran RapidSpheres™. NOTE: Particles should appear evenly dispersed.	30 seconds	30 seconds
	Add Dextran RapidSpheres™ to sample and mix.	50 µL/mL of sample NO INCUBATION, proceed immediately to next step	50 µL/mL of sample NO INCUBATION, proceed immediately to next step
13	Add recommended medium to top up the sample to the indicated volume. Mix by gently pipetting up and down 2 - 3 times.	Top up to 2.5 mL	<ul style="list-style-type: none"> • Top up to 5 mL for start sample < 4 mL • Top up to 10 mL for start sample ≥ 4 mL
	Place the tube (without lid) into the magnet and incubate.	RT for 5 minutes	RT for 5 minutes
14	Pick up the magnet, and in one continuous motion invert the magnet and tube,* pouring the enriched cell suspension into a new tube.	Use a new 5 mL tube	Use a new 14 mL tube
15	Remove the tube from the magnet; Place the new tube (without lid) into the magnet and incubate for a second separation.	RT for 1 minute	RT for 1 minute
16	Pick up the magnet, and in one continuous motion invert the magnet and tube,* pouring the enriched cell suspension into a new tube.	Isolated cells are ready for use	Isolated cells are ready for use

RT - room temperature (15 - 25°C)

* Leave the magnet and tube inverted for 2 - 3 seconds, then return upright. Do not shake or blot off any drops that may remain hanging from the mouth of the tube.

Table 2. EasySep™ Human Memory B Cell Isolation Kit Protocol

		EASYSEP™ MAGNETS		
STEP	INSTRUCTIONS	EasyEights™ (Catalog #18103)		Easy 50 (Catalog #18002)
		5 mL tube	14 mL tube	
1	Prepare sample at the indicated cell concentration within the volume range.	1 x 10 ⁸ cells/mL 0.5 - 1 mL	1 x 10 ⁸ cells/mL 0.5 - 6 mL	1 x 10 ⁸ cells/mL 10 - 25 mL
	Add sample to required tube.	5 mL (12 x 75 mm) polystyrene round-bottom tube (e.g. Catalog #38007)	14 mL (17 x 95 mm) polystyrene round-bottom tube (e.g. Catalog #38008)	50 mL (30 x 115 mm) conical tube (e.g. Catalog #38010)
2	Add CD27 Positive Selection Cocktail to sample.	50 µL/mL of sample	50 µL/mL of sample	50 µL/mL of sample
	Mix and incubate.	RT for 5 minutes	RT for 5 minutes	RT for 5 minutes
3	Vortex Releasable RapidSpheres™. NOTE: Particles should appear evenly dispersed.	30 seconds	30 seconds	30 seconds
	Add Releasable RapidSpheres™ to sample and mix.	100 µL/mL of sample	100 µL/mL of sample	100 µL/mL of sample
4	Add Memory B Cell Pre-Enrichment Cocktail to sample.	100 µL/mL of sample	100 µL/mL of sample	90 µL/mL of sample
	Mix and incubate.	RT for 5 minutes	RT for 5 minutes	RT for 5 minutes
5	Add recommended medium to top up the sample to the indicated volume. Mix by gently pipetting up and down 2 - 3 times.	Top up to 2.5 mL	<ul style="list-style-type: none"> Top up to 5 mL for samples < 4 mL Top up to 10 mL for samples ≥ 4 mL 	<ul style="list-style-type: none"> Top up to 25 mL for samples ≤ 10 mL Top up to 50 mL for samples > 10 mL
	Place the tube (without lid) into the magnet and incubate.	RT for 10 minutes	RT for 10 minutes	RT for 10 minutes
6	Carefully pipette** (do not pour) the supernatant into a new tube.	Use a new 5 mL tube Set aside supernatant for isolating naïve B cells (Table 4) if desired	Use a new 14 mL tube Set aside supernatant for isolating naïve B cells (Table 4) if desired	Use a new 50 mL tube Set aside supernatant for isolating naïve B cells (Table 4) if desired
7	Remove the tube from the magnet and add recommended medium to top up the sample to the indicated volume. Mix by gently pipetting up and down 2 - 3 times.	Top up to 2.5 mL	<ul style="list-style-type: none"> Top up to 5 mL for samples < 4 mL Top up to 10 mL for samples ≥ 4 mL 	<ul style="list-style-type: none"> Top up to 25 mL for samples ≤ 10 mL Top up to 50 mL for samples > 10 mL
	Place the tube (without lid) into the magnet and incubate.	RT for 10 minutes	RT for 10 minutes	RT for 10 minutes
8	Carefully pipette** (do not pour) off the supernatant.	Discard supernatant	Discard supernatant	Discard supernatant
9	Repeat steps as indicated.	Steps 7 and 8, two more times (total of 4 x 10-minute separations)	Steps 7 and 8, two more times (total of 4 x 10-minute separations)	Steps 7 and 8, two more times (total of 4 x 10-minute separations)
Continue to step 10, next page		Continue to step 10, next page	Continue to step 10, next page	Continue to step 10, next page



		EASYSEP™ MAGNETS		
STEP	INSTRUCTIONS (CONTINUED)	EasyEights™ (Catalog #18103)		Easy 50 (Catalog #18002)
		5 mL tube	14 mL tube	
10	Remove the tube from the magnet and add recommended medium to top up the sample to the indicated volume. Mix by gently pipetting up and down 2 - 3 times. Be sure to collect cells off the sides of the tube.	Same volume as the original starting sample volume (i.e. same volume used in step 1)	Same volume as the original starting sample volume (i.e. same volume used in step 1)	Same volume as the original starting sample volume (i.e. same volume used in step 1)
11	Add Release Buffer to sample.	100 µL/mL of sample	100 µL/mL of sample	100 µL/mL of sample
	Add Memory B Cell Pre-Enrichment Cocktail to sample.	---	---	10 µL/mL of sample
	Mix and incubate.	RT for 5 minutes	RT for 5 minutes	RT for 5 minutes
12	Vortex Dextran RapidSpheres™. NOTE: Particles should appear evenly dispersed.	30 seconds	30 seconds	30 seconds
13	Add Dextran RapidSpheres™ to sample.	50 µL/mL of sample	50 µL/mL of sample	50 µL/mL of sample
	Mix and incubate.	RT for 3 minutes	RT for 3 minutes	RT for 3 minutes
14	Add recommended medium to top up the sample to the indicated volume. Mix by gently pipetting up and down 2 - 3 times.	Top up to 2.5 mL	<ul style="list-style-type: none"> • Top up to 5 mL for samples < 4 mL • Top up to 10 mL for samples ≥ 4 mL 	<ul style="list-style-type: none"> • Top up to 20 mL for samples ≤ 10 mL • Top up to 40 mL for samples > 10 mL
	Place the tube (without lid) into the magnet and incubate.	RT for 10 minutes	RT for 10 minutes	RT for 10 minutes
15	Carefully pipette** (do not pour) the enriched cell suspension into a new tube.	Use a new 5 mL tube	Use a new 14 mL tube	Use a new 50 mL tube
16	Remove the tube from the magnet; Place the new tube (without lid) into the magnet and incubate for a second separation.	RT for 10 minutes	RT for 10 minutes	RT for 10 minutes
17	Carefully pipette** (do not pour) the enriched cell suspension into a new tube.	Isolated cells are ready for use	Isolated cells are ready for use	Isolated cells are ready for use

RT - room temperature (15 - 25°C)

** Collect the entire enriched cell suspension, all at once, into a single pipette (e.g. for EasyEights™ 5 mL tube use a 2 mL serological pipette [Catalog #38002]; for EasyEights™ 14 mL tube use a 10 mL serological pipette [Catalog #38004]).

After step 6 of a Manual EasySep™ Human Memory B Cell Isolation Protocol (see Tables 1 and 2), the supernatant can be further enriched to obtain naïve (CD19+CD27-) B cells. Refer to Tables 3 and 4 for detailed instructions regarding the EasySep™ procedure for each magnet.




Table 3. Optional: Human Naïve B Cell Enrichment Protocol

		EASYSEP™ MAGNETS	
STEP	INSTRUCTIONS	 EasySep™ (Catalog #18000)	"The Big Easy" (Catalog #18001) 
1	Ensure cells are placed in the required tube.	Supernatant from Table 1, step 6 must be in a 5 mL (12 x 75 mm) polystyrene round-bottom tube (e.g. Catalog #38007)	Supernatant from Table 1, step 6 must be in a 14 mL (17 x 95 mm) polystyrene round-bottom tube (e.g. Catalog #38008)
2	Vortex Dextran RapidSpheres™. NOTE: Particles should appear evenly dispersed.	30 seconds	30 seconds
	Add Dextran RapidSpheres™ to sample and mix.	50 µL/mL of original sample volume (see Table 1, step 1) NO INCUBATION, proceed immediately to next step	50 µL/mL of original sample volume (see Table 1, step 1) NO INCUBATION, proceed immediately to next step
3	Place the tube (without lid) into the magnet and incubate.	RT for 5 minutes	RT for 5 minutes
4	Pick up the magnet, and in one continuous motion invert the magnet and tube,* pouring the enriched cell suspension into a new tube.	Isolated cells are ready for use	Isolated cells are ready for use

RT - room temperature (15 - 25°C)

* Leave the magnet and tube inverted for 2 - 3 seconds, then return upright. Do not shake or blot off any drops that may remain hanging from the mouth of the tube.

Table 4. Optional: Human Naïve B Cell Enrichment Protocol

		EASYSEP™ MAGNETS		
STEP	INSTRUCTIONS	EasyEights™ (Catalog #18103)		Easy 50 (Catalog #18002) 
		 5 mL tube	 14 mL tube	
1	Ensure cells are placed in the required tube.	Supernatant from Table 2, step 6 must be in a 5 mL (12 x 75 mm) polystyrene round-bottom tube (e.g. Catalog #38007)	Supernatant from Table 2, step 6 must be in a 14 mL (17 x 95 mm) polystyrene round-bottom tube (e.g. Catalog #38008)	Supernatant from Table 2, step 6 must be in a 50 mL (30 x 115 mm) conical tube (e.g. Catalog #38010)
2	Vortex Dextran RapidSpheres™. NOTE: Particles should appear evenly dispersed.	30 seconds	30 seconds	30 seconds
3	Add Dextran RapidSpheres™ to sample.	50 µL/mL of original sample volume (see Table 2, step 1)	50 µL/mL of original sample volume (see Table 2, step 1)	50 µL/mL of original sample volume (see Table 2, step 1)
	Mix and incubate.	RT for 3 minutes	RT for 3 minutes	RT for 3 minutes
4	Place the tube (without lid) into the magnet and incubate.	RT for 5 minutes	RT for 5 minutes	RT for 10 minutes
5	Carefully pipette** (do not pour) the enriched cell suspension into a new tube.	Isolated cells are ready for use	Isolated cells are ready for use	Isolated cells are ready for use

RT - room temperature (15 - 25°C)

** Collect the entire supernatant, all at once, into a single pipette (e.g. for EasyEights™ 5 mL tube use a 2 mL serological pipette [Catalog #38002]; for EasyEights™ 14 mL tube use a 10 mL serological pipette [Catalog #38004]).

Notes and Tips

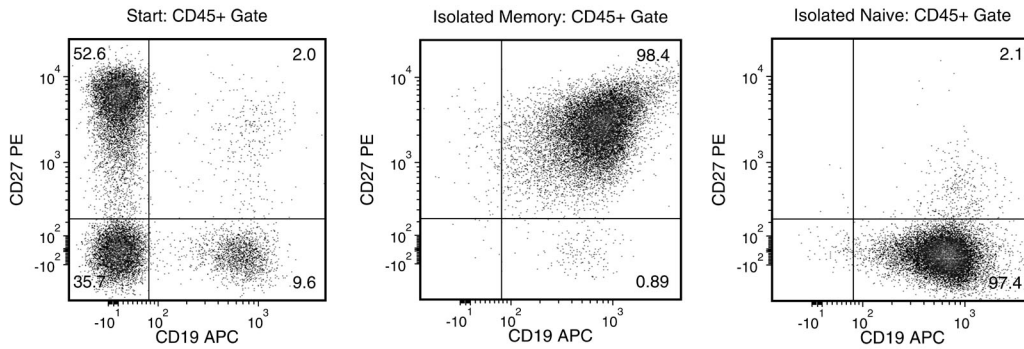
ASSESSING PURITY

For purity assessment of CD19+CD27+ cells by flow cytometry, use the following fluorochrome-conjugated antibody clones:

- Anti-Human CD19 Antibody, Clone HIB19 (Catalog #60005), and
- Anti-Human CD45 Antibody, Clone HI30 (Catalog #60018) or Clone 2D1 (Catalog #60123), and
- Anti-Mouse CD27 Antibody, Clone LG.3A10 (Catalog #60160), which cross-reacts with human CD27

NOTE: Brilliant Violet™ antibody conjugates should be carefully titrated on EasySep™ Release-isolated cells prior to analysis by flow cytometry or fluorescence microscopy. For purity assessment with Brilliant Violet™ antibody conjugates, use of BD Horizon Brilliant™ Stain Buffer is recommended to reduce non-specific interactions. For more information, refer to the manufacturer's instructions or contact us at techsupport@stemcell.com.

Data



Starting with PBMCs, the memory B cell content (CD19+CD27+) of the isolated fraction is typically $97 \pm 2\%$ (mean \pm SD using the purple EasySep™ Magnet). Using the optional protocol, the naïve B cell content (CD19+CD27-) of the isolated fraction is typically $93 \pm 5\%$ (mean \pm SD).

PRODUCTS ARE FOR RESEARCH USE ONLY AND NOT INTENDED FOR HUMAN OR ANIMAL DIAGNOSTIC OR THERAPEUTIC USES UNLESS OTHERWISE STATED. FOR ADDITIONAL INFORMATION ON QUALITY AT STEMCELL, REFER TO WWW.STEMCELL.COM/COMPLIANCE.

Copyright © 2021 by STEMCELL Technologies Inc. All rights reserved including graphics and images. STEMCELL Technologies & Design, STEMCELL Shield Design, Scientists Helping Scientists, EasyEights, EasySep, RapidSpheres, and SepMate are trademarks of STEMCELL Technologies Inc. Brilliant Violet is a trademark of Sirigen Group Ltd. Lymphoprep is a trademark of Alere Technologies. All other trademarks are the property of their respective holders. While STEMCELL has made all reasonable efforts to ensure that the information provided by STEMCELL and its suppliers is correct, it makes no warranties or representations as to the accuracy or completeness of such information.