

EasySep™ Mouse CD45 Positive Selection Kit

For processing 2 x 10⁹ cells

Catalog #18945

Positive Selection

Document #10000005216 | Version 02



Scientists Helping Scientists™ | WWW.STEMCELL.COM

TOLL FREE PHONE 1 800 667 0322 • PHONE +1 604 877 0713

INFO@STEMCELL.COM • TECHSUPPORT@STEMCELL.COM

FOR GLOBAL CONTACT DETAILS VISIT OUR WEBSITE

Description

Isolate highly purified CD45+ cells from mouse splenocytes, lungs, or other single-cell suspensions by immunomagnetic positive selection. When using single-cell suspensions from other tissue types, this kit may require optimization.

- Fast and easy-to-use
- Up to 98% purity
- No columns required
- Isolated cells are not fluorochrome-labeled

This kit targets CD45+ cells for positive selection with antibodies recognizing the CD45 surface marker. Desired cells are labeled with antibodies and magnetic particles, and separated without columns using an EasySep™ magnet. Unwanted cells are simply poured off, while desired cells remain in the tube. Isolated cells are immediately available for downstream applications such as flow cytometry, culture, and cell-based experiments.

Component Descriptions

COMPONENT NAME	COMPONENT #	QUANTITY	STORAGE	SHELF LIFE	FORMAT
EasySep™ Mouse CD45 Positive Selection Kit Component A	18945CA	1 x 1 mL	Store at 2 - 8°C. Do not freeze.	Stable until expiry date (EXP) on label.	A combination of monoclonal antibodies in PBS with 0.1% BSA.
EasySep™ Mouse CD45 Positive Selection Kit Component B	18945CB	1 x 1 mL	Store at 2 - 8°C. Do not freeze.	Stable until expiry date (EXP) on label.	A combination of monoclonal antibodies in PBS with 5% HPCD.
EasySep™ Dextran RapidSpheres™ 50100	50100	1 x 1 mL	Store at 2 - 8°C. Do not freeze.	Stable until expiry date (EXP) on label.	A suspension of magnetic particles in water.

BSA - bovine serum albumin; HPCD - 2-hydroxypropyl-β-cyclodextrin; PBS - phosphate-buffered saline

Components may be shipped at room temperature (15 - 25°C) and should be stored according to their storage conditions upon receipt.

Additional Reagent Stability Information

REAGENT NAME	STORAGE	SHELF LIFE
Selection Cocktail (combined Component A + Component B)	Store at 2 - 8°C. Do not freeze.	Stable for up to 4 weeks. Do not exceed expiry date (EXP) of individual components.

Sample Preparation

LUNG TISSUE

The following instructions are for processing 5 - 10 mouse lungs. If starting with more than 10 lungs, adjust volumes accordingly.

1. Prepare 10 mL of lung digestion medium by adding 0.25 mL of Liberase™ TM Research Grade (10 mg/mL; Sigma-Aldrich, Catalog #5401119001) and 1.5 mL of DNase I Solution (1 mg/mL; Catalog #07900) to 8.25 mL of RPMI 1640 Medium (Catalog #36750). Warm to room temperature (15 - 25°C).
NOTE: 1 mL of Collagenase/Hyaluronidase (Catalog #07912) can also be used instead of Liberase™ TM Research Grade. If using Collagenase/Hyaluronidase to prepare lung digestion medium, decrease the volume of RPMI 1640 Medium to 7.5 mL.
2. Harvest lung tissue into a 50 mL conical tube with PBS containing 2% fetal bovine serum (FBS).
3. Transfer lung tissue to a new 50 mL conical tube containing 10 mL of digestion medium and mince the tissue into small pieces using scissors. Incubate at 37°C for 20 minutes on a shaking platform.
4. Place a 70 µm nylon mesh strainer (e.g. Catalog #27260) in a Culture Dish (e.g. Catalog #27110) and push the digested lung tissue through the strainer with the rubber end of a syringe plunger to obtain a cell suspension.
5. Place a new 70 µm nylon mesh strainer over a 50 mL conical tube and filter the cell suspension through the strainer. Rinse the strainer with recommended medium and collect in the same tube.
6. Centrifuge at 300 x g for 10 minutes at room temperature with the brake on low. Carefully remove and discard the supernatant.
7. Add 20 mL of Ammonium Chloride Solution (Catalog #07800) to the cell pellet. Incubate at room temperature for 5 minutes.
8. Top up to 50 mL with recommended medium. Centrifuge at 300 x g for 10 minutes at room temperature with the brake on low. Carefully remove and discard the supernatant.
9. Resuspend cells at 1×10^8 nucleated cells/mL in recommended medium.

SPLEEN

1. Harvest spleen into a conical tube with PBS containing 2% fetal bovine serum (FBS) or EasySep™ Buffer (Catalog #20144).
2. Place a 70 µm nylon mesh strainer (e.g. Catalog #27260) over a 50 mL conical tube (e.g. Catalog #38010) and push spleen tissue through the strainer with the rubber end of a syringe plunger to obtain a single cell suspension.
3. Centrifuge at 300 x g for 10 minutes at room temperature with the brake on low. Carefully discard the supernatant.
4. Resuspend cells at 1×10^8 nucleated cells/mL in recommended medium.

NOTE: Ammonium chloride treatment is not recommended when preparing the cells for separation.



Recommended Medium

EasySep™ Buffer (Catalog #20144), or PBS containing 2% FBS and 1 mM EDTA. Medium should be free of Ca^{++} and Mg^{++} .

Directions for Use – Manual EasySep™ Protocols

See page 1 for Sample Preparation and Recommended Medium. Refer to Tables 1 and 2 for detailed instructions regarding the EasySep™ procedure for each magnet.



Table 1. EasySep™ Mouse CD45 Positive Selection Kit Protocol

		EASYSEP™ MAGNETS	
STEP	INSTRUCTIONS	 EasySep™ (Catalog #18000)	“The Big Easy” (Catalog #18001) 
1	Prepare sample at the indicated cell concentration within the volume range.	1 x 10 ⁸ cells/mL 0.1 - 1.5 mL	1 x 10 ⁸ cells/mL 0.5 - 8 mL
	Add sample to required tube.	5 mL (12 x 75 mm) polystyrene round-bottom tube (e.g. Catalog #38007)	14 mL (17 x 95 mm) polystyrene round-bottom tube (e.g. Catalog #38008)
2	Prepare Selection Cocktail in a tube. For each 1 mL of sample make 100 µL of cocktail (50 µL of Component A + 50 µL of Component B).	Mix equal volumes of Component A and Component B. Prepared cocktail is stable at 2 - 8°C for up to 4 weeks.	Mix equal volumes of Component A and Component B. Prepared cocktail is stable at 2 - 8°C for up to 4 weeks.
3	Add Selection Cocktail to sample.	100 µL/mL of sample	100 µL/mL of sample
	Mix and incubate.	RT for 5 minutes	RT for 5 minutes
4	Vortex RapidSpheres™. NOTE: Particles should appear evenly dispersed.	30 seconds	30 seconds
5	Add RapidSpheres™ to sample.	50 µL/mL of sample	50 µL/mL of sample
	Mix and incubate.	RT for 3 minutes	RT for 3 minutes
6	Add recommended medium to top up the sample to the indicated volume. Mix by gently pipetting up and down 2 - 3 times.	Top up to 2.5 mL	<ul style="list-style-type: none"> • Top up to 5 mL for samples ≤ 3 mL • Top up to 10 mL for samples > 3 mL
	Place the tube (without lid) into the magnet and incubate.	RT for 5 minutes	RT for 5 minutes
7	Pick up the magnet, and in one continuous motion invert the magnet and tube,* pouring off the supernatant. Remove the tube from the magnet; this tube contains the isolated cells.	Discard supernatant	Discard supernatant
8	Repeat steps as indicated.	Steps 6 and 7 (total of 2 x 5-minute separations)	Steps 6 and 7 (total of 2 x 5-minute separations)
9	Resuspend cells in desired medium. Be sure to collect cells from the sides of the tube.	Isolated cells are ready for use	Isolated cells are ready for use

RT - room temperature (15 - 25°C)

* Leave the magnet and tube inverted for 2 - 3 seconds, then return upright. Do not shake or blot off any drops that may remain hanging from the mouth of the tube.

Table 2. EasySep™ Mouse CD45 Positive Selection Kit Protocol

		EASYSEP™ MAGNETS	
STEP	INSTRUCTIONS	 EasyPlate™ (Catalog #18102)	 EasyEights™ (Catalog #18103) 5 mL tube
1	Prepare sample at the indicated cell concentration within the volume range.	1 x 10 ⁸ cells/mL 0.05 - 0.15 mL	1 x 10 ⁸ cells/mL 0.1 - 1.5 mL
	Add sample to required tube.	Round-bottom, non-tissue culture-treated 96-well plate (e.g. Catalog #38018)	5 mL (12 x 75 mm) polystyrene round-bottom tube (e.g. Catalog #38007)
2	Prepare Selection Cocktail in a tube. For each 1 mL of sample, prepare 100 µL of cocktail (50 µL of Component A + 50 µL of Component B).	Mix equal volumes of Component A and Component B. Prepared cocktail is stable at 2 - 8°C for up to 4 weeks.	Mix equal volumes of Component A and Component B. Prepared cocktail is stable at 2 - 8°C for up to 4 weeks.
3	Add Selection Cocktail to sample.	100 µL/mL of sample	100 µL/mL of sample
	Mix and incubate.	RT for 5 minutes	RT for 5 minutes
4	Vortex RapidSpheres™. NOTE: Particles should appear evenly dispersed.	30 seconds	30 seconds
5	Add RapidSpheres™ to sample.	50 µL/mL of sample	100 µL/mL of sample
	Mix and incubate.	RT for 3 minutes	RT for 3 minutes
6	Add recommended medium to top up sample to the indicated volume. Mix by gently pipetting up and down 2 - 3 times.	Top up to 250 µL	Top up to 2.5 mL
	Place the tube (without lid) into the magnet and incubate.	RT for 5 minutes	RT for 10 minutes
7	Carefully pipette** (do not pour) off the supernatant. Remove the tube from the magnet; this tube contains the isolated cells.	Discard supernatant	Discard supernatant
8	Repeat steps as indicated.	Steps 6 and 7 (total of 2 x 5-minute separations)	Steps 6 and 7 (total of 2 x 10-minute separations)
9	Resuspend cells in desired medium. Be sure to collect cells from the sides of the tube.	Isolated cells are ready for use	Isolated cells are ready for use

RT - room temperature (15 - 25°C)

** Collect the entire supernatant, all at once, into a single pipette (e.g. for EasyEights™ 5 mL tube use a 2 mL serological pipette [Catalog #38002]).

Notes and Tips

ASSESSING PURITY

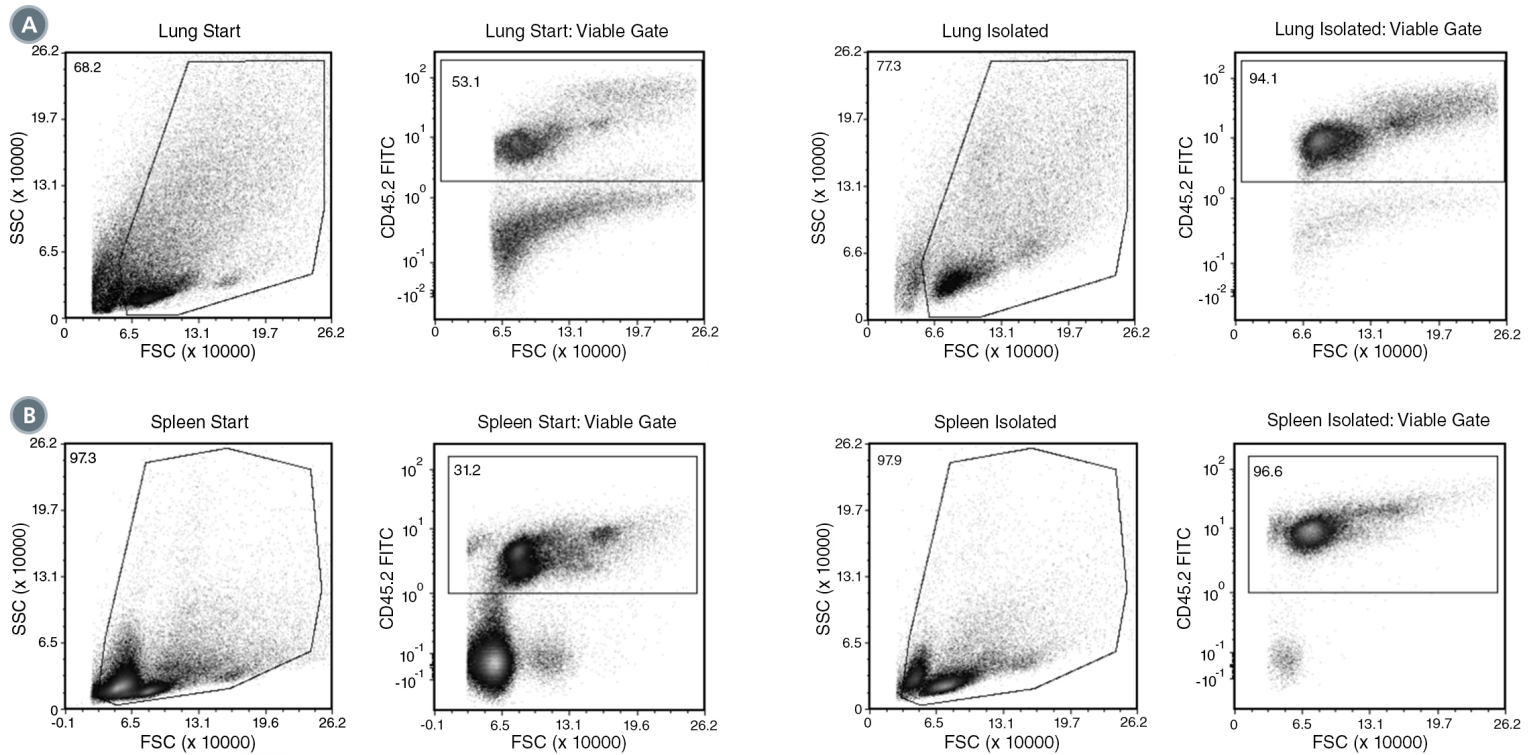
For purity assessment by flow cytometry, use one of the following antibody clones:

- Anti-Mouse CD45.2, Clone 104 (Catalog #60118) for CD45.2 or Ly5.2 bearing mouse strains (e.g. A, AKR, BALB/c, CBA/Ca, CBA/J, C3H/He, C57BL, C57BR, C57L, C58, DBA/1, DBA/2, NZB, SWR, and 129)

OR

- Anti-Mouse CD45.1, Clone A20 (Catalog #60117) for CD45.1 or Ly5.1 bearing mouse strains (e.g. RIII, SJL/J, STS/A, and DA)

Data



(A) Starting with a naïve mouse lung single-cell suspension, the leukocyte content (CD45+) of the isolated fraction is typically $97.0 \pm 1.4\%$ (mean \pm SD using the purple EasySep™ Magnet). In the above example, the purities of the start and final isolated fractions in lung are 53.1% and 94.1%, respectively.

(B) Starting with unlysed naïve mouse splenocytes, the leukocyte content (CD45+) of the isolated fraction is typically $97.6 \pm 1.3\%$ (mean \pm SD using the purple EasySep™ Magnet). In the above example using spleen, the purities of the start and final isolated fractions are 31.2% and 96.6%, respectively.

PRODUCTS ARE FOR RESEARCH USE ONLY AND NOT INTENDED FOR HUMAN OR ANIMAL DIAGNOSTIC OR THERAPEUTIC USES UNLESS OTHERWISE STATED. FOR ADDITIONAL INFORMATION ON QUALITY AT STEMCELL, REFER TO WWW.STEMCELL.COM/COMPLIANCE.

Copyright © 2020 by STEMCELL Technologies Inc. All rights reserved including graphics and images. STEMCELL Technologies & Design, STEMCELL Shield Design, Scientists Helping Scientists, EasyEights, EasyPlate, EasySep, and RapidSpheres are trademarks of STEMCELL Technologies Canada Inc. Liberase is a trademark of Roche Diagnostics. All other trademarks are the property of their respective holders. STEMCELL has made all reasonable efforts to ensure that the information provided by STEMCELL and its suppliers is correct, it makes no warranties or representations as to the accuracy or completeness of such information.