

EasySep™ Human CD14 Positive Selection Kit II

For processing 1×10^9 cells

Catalog #17858

Positive Selection

Document #1000005211 | Version 01



Scientists Helping Scientists™ | WWW.STEMCELL.COM

TOLL FREE PHONE 1 800 667 0322 • PHONE +1 604 877 0713

INFO@STEMCELL.COM • TECHSUPPORT@STEMCELL.COM

FOR GLOBAL CONTACT DETAILS VISIT OUR WEBSITE

Description

Isolate highly purified CD14+ cells from fresh or previously frozen human peripheral blood mononuclear cells (PBMCs) or washed leukapheresis samples in as little as 22 minutes by immunomagnetic positive selection.

- Fast and easy-to-use
- Up to 97% purity
- No columns required

This kit targets CD14+ cells for positive selection with antibodies recognizing the CD14 surface marker. Desired cells are labeled with antibodies and magnetic particles, and separated without columns using an EasySep™ magnet. Unwanted cells are simply poured off, while desired cells remain in the tube. Isolated cells are immediately available for downstream applications such as flow cytometry, culture, or DNA/RNA extraction.

Component Descriptions

COMPONENT NAME	COMPONENT #	QUANTITY	STORAGE	SHELF LIFE	FORMAT
EasySep™ Human CD14 Positive Selection Cocktail II	17858C	1 x 1 mL	Store at 2 - 8°C. Do not freeze.	Stable until expiry date (EXP) on label.	A combination of monoclonal antibodies in PBS.
EasySep™ Dextran RapidSpheres™ 50100	50100	1 x 1 mL	Store at 2 - 8°C. Do not freeze.	Stable until expiry date (EXP) on label.	A suspension of magnetic particles in water.

PBS - phosphate-buffered saline

Components may be shipped at room temperature (15 - 25°C) but should be stored as indicated above.

Sample Preparation

For available fresh and frozen samples, see www.stemcell.com/primarycells.

PERIPHERAL BLOOD

Prepare a PBMC suspension from whole peripheral blood by centrifugation over a density gradient medium (e.g. Lymphoprep™, Catalog #07801). For more rapid PBMC preparation, use the SepMate™ RUO (Catalog #86450/86415) or SepMate™ IVD* (Catalog #85450/85415) cell isolation tube.

If using previously frozen PBMCs, incubate the cells with DNase I Solution (1 mg/mL; Catalog #07900) at a concentration of 100 µg/mL at room temperature (15 - 25°C) for at least 15 minutes prior to labeling and separation. Filter aggregated suspensions through a 37 µm cell strainer (e.g. Catalog #27250) for optimal results.

After preparation, resuspend cells at 1×10^8 cells/mL in recommended medium.

* SepMate™ IVD is only available in select regions where it is registered as an In Vitro Diagnostic (IVD) device for the isolation of mononuclear cells (MNCs) from whole blood or bone marrow by density gradient centrifugation. In all other regions SepMate™ is available for research use only (RUO).

LEUKAPHERESIS

Wash the peripheral blood leukapheresis sample by adding an equivalent volume of recommended medium or PBS containing 2% fetal bovine serum (FBS). Centrifuge at 500 x g for 10 minutes at room temperature (15 - 25°C). If red blood cell (RBC) lysis is necessary, lyse with Ammonium Chloride Solution (Catalog #07800). If platelet removal is necessary, centrifuge at 120 x g for 10 minutes with the brake off. Remove the supernatant and resuspend the cells at 1×10^8 cells/mL in recommended medium.



Recommended Medium

EasySep™ Buffer (Catalog #20144), RoboSep™ Buffer (Catalog #20104), or PBS containing 2% FBS with 1 mM EDTA. Medium should be free of Ca++ and Mg++.

Directions for Use – Manual EasySep™ Protocols

See page 1 for Sample Preparation and Recommended Medium. Refer to Tables 1 and 2 for detailed instructions regarding the EasySep™ procedure for each magnet.




Table 1. EasySep™ Human CD14 Positive Selection Kit II Protocol

		EASYSEP™ MAGNETS	
STEP	INSTRUCTIONS	 EasySep™ (Catalog #18000)	 “The Big Easy” (Catalog #18001)
1	Prepare sample at the indicated cell concentration within the volume range.	1 x 10 ⁸ cells/mL 0.1 - 2 mL	1 x 10 ⁸ cells/mL 0.25 - 8 mL
	Add sample to required tube.	5 mL (12 x 75 mm) polystyrene round-bottom tube (e.g. Catalog #38007)	14 mL (17 x 95 mm) polystyrene round-bottom tube (e.g. Catalog #38008)
2	Add Selection Cocktail to sample.	100 µL/mL of sample	100 µL/mL of sample
	Mix and incubate.	RT for 10 minutes	RT for 10 minutes
3	Vortex RapidSpheres™. NOTE: Particles should appear evenly dispersed.	30 seconds	30 seconds
4	Add RapidSpheres™ to sample.	100 µL/mL of sample	100 µL/mL of sample
	Mix and incubate.	RT for 3 minutes	RT for 3 minutes
5	Add recommended medium to top up the sample to the indicated volume. Mix by gently pipetting up and down 2 - 3 times.	Top up to 2.5 mL	<ul style="list-style-type: none"> • Top up to 5 mL for samples < 2 mL • Top up to 10 mL for samples ≥ 2 mL
	Place the tube (without lid) into the magnet and incubate.	RT for 3 minutes	RT for 3 minutes
6	Pick up the magnet, and in one continuous motion invert the magnet and tube,* pouring off the supernatant. Remove the tube from the magnet; this tube contains the isolated cells.	Discard supernatant	Discard supernatant
7	Repeat steps as indicated.	Steps 5 and 6, two more times (total of 3 x 3-minute separations)	Steps 5 and 6, two more times (total of 3 x 3-minute separations)
8	Resuspend cells in desired medium. Be sure to collect cells from the sides of the tube.	Isolated cells are ready for use	Isolated cells are ready for use

RT - room temperature (15 - 25°C)

* Leave the magnet and tube inverted for 2 - 3 seconds, then return upright. Do not shake or blot off any drops that may remain hanging from the mouth of the tube.

Table 2. EasySep™ Human CD14 Positive Selection Kit II Protocol

STEP	INSTRUCTIONS	EASYSEP™ MAGNETS			
		 EasyPlate™ (Catalog #18102)	 EasyEights™ (Catalog #18103)		 Easy 50 (Catalog #18002)
			5 mL tube	14 mL tube	
1	Prepare sample at the indicated cell concentration within the volume range.	1 x 10 ⁸ cells/mL 0.1 - 0.2 mL	1 x 10 ⁸ cells/mL 0.1 - 2 mL	1 x 10 ⁸ cells/mL 0.25 - 8 mL	1 x 10 ⁸ cells/mL 2 - 40 mL
	Add sample to required tube (or plate if using the EasyPlate™ EasySep™ Magnet).	Round-bottom, non-tissue culture-treated 96-well plate (e.g. Catalog #38018)	5 mL (12 x 75 mm) polystyrene round-bottom tube (e.g. Catalog #38007)	14 mL (17 x 95 mm) polystyrene round-bottom tube (e.g. Catalog #38008)	50 mL (30 x 115 mm) conical tube (e.g. Catalog #38010)
2	Add Selection Cocktail to sample.	100 µL/mL of sample	100 µL/mL of sample	100 µL/mL of sample	100 µL/mL of sample
	Mix and incubate.	RT for 10 minutes	RT for 10 minutes	RT for 10 minutes	RT for 10 minutes
3	Vortex RapidSpheres™. NOTE: Particles should appear evenly dispersed.	30 seconds	30 seconds	30 seconds	30 seconds
4	Add RapidSpheres™ to sample.	100 µL/mL of sample	100 µL/mL of sample	100 µL/mL of sample	100 µL/mL of sample
	Mix and incubate.	RT for 3 minutes	RT for 3 minutes	RT for 3 minutes	RT for 3 minutes
5	Add recommended medium to top up sample to the indicated volume. Mix by gently pipetting up and down 2 - 3 times.	Top up to 0.25 mL	Top up to 2.5 mL	<ul style="list-style-type: none"> • Top up to 5 mL for samples < 2 mL • Top up to 10 mL for samples ≥ 2 mL 	Top up to: <ul style="list-style-type: none"> • 10 mL for samples ≤ 5 mL • 20 mL for samples > 5 - 10 mL • 30 mL for samples > 10 - 15 mL • 40 mL for samples > 15 - 20 mL • 50 mL for samples > 20 - 40 mL
	Place the tube or plate (without lid) into the magnet and incubate.	RT for 10 minutes	RT for 10 minutes	RT for 10 minutes	RT for 10 minutes
6	Carefully pipette** (do not pour) off the supernatant. Remove the tube or plate, containing the isolated cells, from the magnet.	Discard supernatant	Discard supernatant	Discard supernatant	Discard supernatant
7	Add recommended medium to top up sample to the indicated volume. Mix by gently pipetting up and down 2 - 3 times.	Top up to 0.25 mL	Top up to 2.5 mL	<ul style="list-style-type: none"> • Top up to 5 mL for samples < 2 mL • Top up to 10 mL for samples ≥ 2 mL 	Top up to: <ul style="list-style-type: none"> • 10 mL for samples ≤ 5 mL • 20 mL for samples > 5 - 10 mL • 30 mL for samples > 10 - 15 mL • 40 mL for samples > 15 - 20 mL • 50 mL for samples > 20 - 40 mL
	Place the tube or plate (without lid) into the magnet and incubate.	RT for 5 minutes	RT for 10 minutes	RT for 10 minutes	RT for 10 minutes
8	Carefully pipette** (do not pour) off the supernatant. Remove the tube or plate, containing the isolated cells, from the magnet.	Discard supernatant	Discard supernatant	Discard supernatant	Discard supernatant
9	Repeat steps as indicated.	Steps 7 and 8 (total of 1 x 10-minute and 2 x 5-minute separations)	Steps 7 and 8 (total of 3 x 10-minute separations)	Steps 7 and 8 (total of 3 x 10-minute separations)	Steps 7 and 8 (total of 3 x 10-minute separations)
10	Resuspend cells in desired medium. Be sure to collect cells from the sides of the tube.	Isolated cells are ready for use	Isolated cells are ready for use	Isolated cells are ready for use	Isolated cells are ready for use

RT - room temperature (15 - 25°C)

** Collect the entire supernatant, all at once, into a single pipette (e.g. for EasyEights™ 5 mL tube use a 2 mL serological pipette [Catalog #38002]; for EasyEights™ 14 mL tube use a 10 mL serological pipette [Catalog #38004]).

Directions for Use – Fully Automated RoboSep™ Protocol

See page 1 for Sample Preparation and Recommended Medium. Refer to Table 3 for detailed instructions regarding the RoboSep™ procedure.

Table 3. RoboSep™ Human CD14 Positive Selection Kit II Protocol

STEP	INSTRUCTIONS	RoboSep™ (Catalog #20000 and #21000)
1	Prepare sample at the indicated cell concentration within the volume range.	1 x 10 ⁸ cells/mL 0.25 - 8 mL
	Add sample to required tube.	14 mL (17 x 95 mm) polystyrene round-bottom tube (e.g. Catalog #38008)
2	Select protocol.	Human CD14 Positive Selection Kit II 17858
3	Vortex RapidSpheres™. NOTE: Particles should appear evenly dispersed.	30 seconds
4	Load the carousel.	Follow on-screen prompts
	Start the protocol.	Press the green “Run” button
5	Unload the carousel when the run is complete. Remove the tube containing the isolated cells and resuspend in desired medium. Be sure to collect cells from the sides of the tube.	Isolated cells are now ready for use

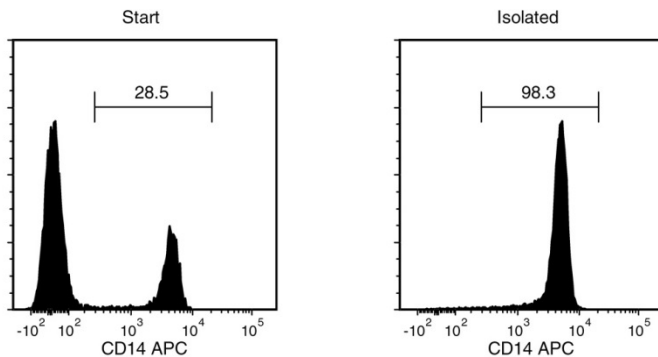
Notes and Tips

ASSESSING PURITY

For purity assessment of CD14+ monocytes by flow cytometry, use one of the following fluorochrome-conjugated antibodies:

- Anti-Human CD14 Antibody, Clone M5E2 (Catalog #60004), or
- Anti-Human CD14 Antibody, Clone MoP9 (Catalog #60124), or
- Anti-human CD14 antibody, clone UCHM1

Data



Starting with a single-cell suspension of human PBMCs, the CD14+ cell content of the isolated fraction is typically 95.3 ± 4.5% (mean ± SD using the purple EasySep™ Magnet).

STEMCELL TECHNOLOGIES INC.'S QUALITY MANAGEMENT SYSTEM IS CERTIFIED TO ISO 13485. PRODUCTS ARE FOR RESEARCH USE ONLY AND NOT INTENDED FOR HUMAN OR ANIMAL DIAGNOSTIC OR THERAPEUTIC USES UNLESS OTHERWISE STATED.

Copyright © 2019 by STEMCELL Technologies Inc. All rights reserved including graphics and images. STEMCELL Technologies & Design, STEMCELL Shield Design, Scientists Helping Scientists, EasyEights, EasyPlate, EasySep, RapidSpheres, RoboSep, and SepMate are trademarks of STEMCELL Technologies Canada Inc. Lymphoprep is a trademark of Alera Technologies. All other trademarks are the property of their respective holders. While STEMCELL has made all reasonable efforts to ensure that the information provided by STEMCELL and its suppliers is correct, it makes no warranties or representations as to the accuracy or completeness of such information.