

EasySep™ EasySep™ Mouse Pan-B Cell Isolation Kit

Negative Selection
Catalog #19844

For processing 1 x 10⁹ cells



Scientists Helping Scientists™ | WWW.STEMCELL.COM

TOLL FREE PHONE 1 800 667 0322 • PHONE +1 604 877 0713
INFO@STEMCELL.COM • TECHSUPPORT@STEMCELL.COM
FOR GLOBAL CONTACT DETAILS VISIT OUR WEBSITE

Document #1000003739 | Version 01

Description

Isolate untouched and highly purified pan-B cells (CD19+, CD19+CD138+, and CD138+), including conventional B-2 B cells, B-1 B cells, and plasma cells from mouse splenocytes by immunomagnetic negative selection. When using single-cell suspensions from other tissue types, this kit may require optimization.

- Fast and easy-to-use
- Up to 98% purity
- No columns required
- Untouched, viable cells

This kit targets non-pan-B cells for removal with biotinylated antibodies recognizing specific cell surface markers. Unwanted cells are labeled with biotinylated antibodies and streptavidin-coated magnetic particles, and separated without columns using an EasySep™ magnet. Desired cells are simply poured off into a new tube. Isolated cells are immediately available for downstream applications such as flow cytometry, culture, or cell-based assays.

Component Descriptions

| COMPONENT NAME | COMPONENT # | QUANTITY | STORAGE | SHELF LIFE | FORMAT |
|--|-------------|------------|-------------------------------------|--|--|
| EasySep™ Mouse Pan-B Cell Isolation Cocktail | 19844C | 1 x 0.5 mL | Store at 2 - 8°C. Do not freeze. | Stable until expiry date (EXP) on label. | A combination of monoclonal antibodies in PBS and 0.1% BSA. Includes an Fc receptor blocking antibody. |
| EasySep™ Streptavidin RapidSpheres™ 50001 | 50001 | 1 x 1 mL | Store at 2 - 8°C. Do not freeze. | Stable until expiry date (EXP) on label. | A suspension of magnetic particles in PBS. |
| Normal Rat Serum | 13551 | 1 x 2 mL | Store at -20°C. | Stable until expiry date (EXP) on label. | Mycoplasma-free normal rat serum. |

BSA - bovine serum albumin; PBS - phosphate-buffered saline

Components may be shipped at room temperature (15 - 25°C) but should be stored as indicated above.

Additional Reagent Stability Information

| REAGENT NAME | STORAGE | SHELF LIFE |
|---------------------------|-------------------|---|
| Normal Rat Serum (in-use) | Store at 2 - 8°C. | Stable for at least 2 months. Do not exceed expiry date (EXP) on label. |

Sample Preparation

SPLEEN

Disrupt spleen in PBS or Hanks' Balanced Salt Solution (HBSS) containing 2% fetal bovine serum (FBS). Remove clumps and debris by passing cell suspension through a 70 µm mesh nylon strainer (e.g. Catalog #27216). Centrifuge at 300 x g for 10 minutes and resuspend at 1 x 10⁸ nucleated cells/mL in recommended medium.

Ammonium chloride treatment is not recommended when preparing the cells for separation.



Recommended Medium

EasySep™ Buffer (Catalog #20144), RoboSep™ Buffer (Catalog #20104), or PBS containing 2% FBS and 1 mM EDTA. HBSS, Modified (without Ca⁺⁺ and Mg⁺⁺; Catalog #37250) can be used in place of PBS. Medium should be free of Ca⁺⁺, Mg⁺⁺, and biotin.

Directions for Use – Manual EasySep™ Protocols

See page 1 for Sample Preparation and Recommended Medium. Refer to Table 1 for detailed instructions regarding the EasySep™ procedure for each magnet.

Table 1. EasySep™ Mouse Pan-B Cell Isolation Kit Protocol

| | | EASYSEP™ MAGNETS | |
|------|---|--|--|
| STEP | INSTRUCTIONS |  EasySep™ (Catalog #18000) |  "The Big Easy" (Catalog #18001) |
| 1 | Prepare sample at the indicated cell concentration within the volume range. | 1 x 10 ⁸ cells/mL 0.25 - 2 mL | 1 x 10 ⁸ cells/mL 0.5 - 8 mL |
| 2 | Add Rat Serum to sample. | 50 µL/mL of sample | 50 µL/mL of sample |
| 3 | Add sample to required tube. | 5 mL (12 x 75 mm) polystyrene round-bottom tube (e.g. Catalog #38007) | 14 mL (17 x 95 mm) polystyrene round-bottom tube (e.g. Catalog #38008) |
| 4 | Add Isolation Cocktail to sample. | 50 µL/mL of sample | 50 µL/mL of sample |
| | Mix and incubate. | RT for 5 minutes | RT for 5 minutes |
| 5 | Vortex RapidSpheres™. NOTE: Particles should appear evenly dispersed. | 30 seconds | 30 seconds |
| 6 | Add RapidSpheres™ to sample. | 50 µL/mL of sample | 50 µL/mL of sample |
| | Mix and incubate. | RT for 2.5 minutes | RT for 2.5 minutes |
| 7 | Add recommended medium to top up the sample to the indicated volume. Mix by gently pipetting up and down 2 - 3 times. | Top up to 2.5 mL | <ul style="list-style-type: none"> • Top up to 5 mL for samples < 4 mL • Top up to 10 mL for samples ≥ 4 mL |
| | Place the tube (without lid) into the magnet and incubate. | RT for 2.5 minutes | RT for 2.5 minutes |
| 8 | Pick up the magnet, and in one continuous motion invert the magnet and tube,* pouring the enriched cell suspension into a new tube. | Isolated cells are ready for use | Isolated cells are ready for use |

RT - room temperature (15 - 25°C)

* Leave the magnet and tube inverted for 2 - 3 seconds, then return upright. Do not shake or blot off any drops that may remain hanging from the mouth of the tube.

Directions for Use – Fully Automated RoboSep™ Protocol

See page 1 for Sample Preparation and Recommended Medium. Refer to Table 2 for detailed instructions regarding the RoboSep™ procedure.

Table 2. RoboSep™ Mouse Pan-B Cell Isolation Kit Protocol

| STEP | INSTRUCTIONS | RoboSep™ (Catalog #20000 and #21000) |
|------|---|---|
| 1 | Prepare sample at the indicated cell concentration within the volume range. | 1 x 10 ⁸ cells/mL 0.5 - 8 mL |
| 2 | Add Rat Serum to sample. | 50 µL/mL of sample |
| 3 | Add sample to required tube. | 14 mL (17 x 95 mm) polystyrene round-bottom tube (e.g. Catalog #38008) |
| 4 | Select protocol. | Mouse Pan-B Cell Isolation 19844 |
| 5 | Vortex RapidSpheres™. NOTE: Particles should appear evenly dispersed. | 30 seconds |
| 6 | Load the carousel. | Follow on-screen prompts |
| | Start the protocol. | Press the green "Run" button |
| 7 | Unload the carousel when the run is complete. | Isolated cells are ready for use |

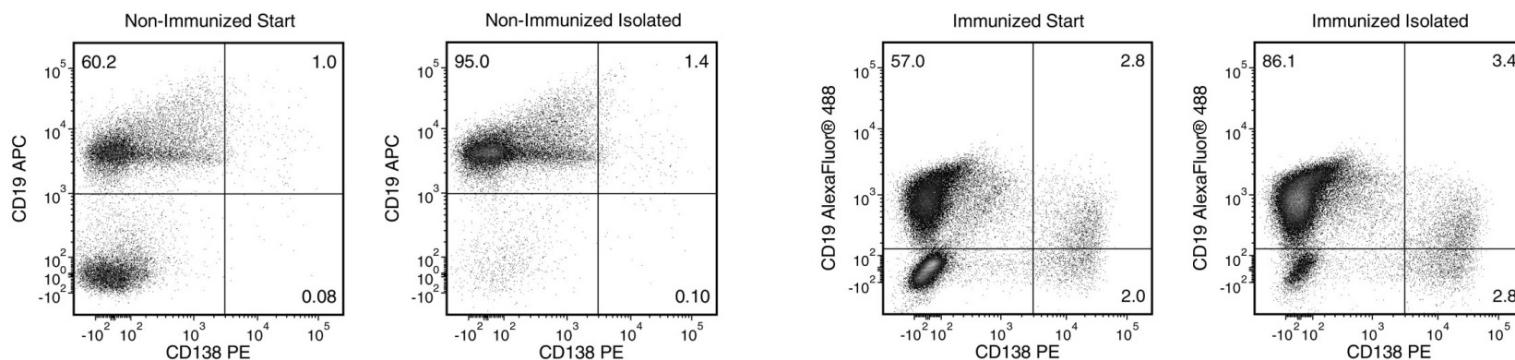
Notes and Tips

ASSESSING PURITY

For purity assessment of pan-B cells by flow cytometry, use the following fluorochrome-conjugated antibody clones:

- Anti-Mouse CD19 Antibody, Clone 6D5 (Catalog #60006), and
- Anti-Mouse CD138 (Syndecan-1) Antibody, Clone 281-2 (Catalog #60035)

Data



Starting with C57BL/6 mouse splenocytes, the pan-B cell content (CD19+, CD19+CD138+, and CD138+) of the isolated fraction typically ranges from 91 - 98%.

STEMCELL TECHNOLOGIES INC.'S QUALITY MANAGEMENT SYSTEM IS CERTIFIED TO ISO 13485. PRODUCTS ARE FOR RESEARCH USE ONLY AND NOT INTENDED FOR HUMAN OR ANIMAL DIAGNOSTIC OR THERAPEUTIC USES UNLESS OTHERWISE STATED.

Copyright © 2019 by STEMCELL Technologies Inc. All rights reserved including graphics and images. STEMCELL Technologies & Design, STEMCELL Shield Design, Scientists Helping Scientists, EasySep, RoboSep, and RapidSpheres are trademarks of STEMCELL Technologies Canada Inc. All other trademarks are the property of their respective holders. While STEMCELL has made all reasonable efforts to ensure that the information provided by STEMCELL and its suppliers is correct, it makes no warranties or representations as to the accuracy or completeness of such information.