

EasySep™ Mouse Naïve CD4+ T Cell Isolation Kit



Scientists Helping Scientists™ | WWW.STEMCELL.COM

TOLL FREE PHONE 1 800 667 0322 • PHONE +1 604 877 0713

INFO@STEMCELL.COM • TECHSUPPORT@STEMCELL.COM

FOR GLOBAL CONTACT DETAILS VISIT OUR WEBSITE

For processing 1 x 10⁹ cells

Catalog #19765

Negative Selection

Document #1000003734 | Version 02

Description

Isolate untouched and highly purified naïve CD4+ T cells (CD4+CD44^{low}CD62L^{high}) from mouse splenocytes by immunomagnetic negative selection. When using single-cell suspensions from other tissue types, this kit may require optimization.

- Fast, easy-to-use, and column-free
- Up to 95% purity
- Untouched, viable cells

This kit targets non-naïve CD4+ T cells for removal with biotinylated antibodies recognizing specific cell surface markers. Unwanted cells are labeled with biotinylated antibodies and magnetic particles, and separated without columns using an EasySep™ magnet. Desired cells are simply poured off into a new tube. Isolated cells are immediately available for downstream applications, such as flow cytometry, culture, or cell-based assays.

Component Descriptions

COMPONENT NAME	COMPONENT #	QUANTITY	STORAGE	SHELF LIFE	FORMAT
EasySep™ Mouse CD4+ T Cell Isolation Cocktail	19852C.1	1 x 0.5 mL	Store at 2 - 8°C. Do not freeze.	Stable until expiry date (EXP) on label.	A combination of monoclonal antibodies in PBS and 0.1% BSA.
EasySep™ Mouse Memory T Cell Depletion Cocktail	18766C	1 x 0.5 mL	Store at 2 - 8°C. Do not freeze.	Stable until expiry date (EXP) on label.	A combination of monoclonal antibodies in PBS and 0.1% BSA.
EasySep™ Streptavidin RapidSpheres™ 50001	50001	1 x 1 mL	Store at 2 - 8°C. Do not freeze.	Stable until expiry date (EXP) on label.	A suspension of magnetic particles in PBS.
EasySep™ Mouse FcR Blocker	18720	1 x 0.1 mL	Store at 2 - 8°C. Do not freeze.	Stable until expiry date (EXP) on label.	A combination of monoclonal antibodies in PBS, 0.1% BSA, and < 0.1% sodium azide.

BSA - bovine serum albumin; PBS - phosphate-buffered saline

Components may be shipped at room temperature (15 - 25°C) but should be stored as indicated above.

Sample Preparation

SPLEEN

Disrupt spleen in PBS or Hanks' Balanced Salt Solution containing 2% fetal bovine serum (FBS). Remove aggregates and debris by passing cell suspension through a 70 µm mesh nylon strainer (e.g. Catalog #27260). Centrifuge at 300 x g for 10 minutes and resuspend at 1 x 10⁸ nucleated cells/mL in recommended medium.

Ammonium chloride treatment is not recommended when preparing the cells for separation.



Recommended Medium

RoboSep™ Buffer (Catalog #20104), or PBS containing 2% FBS. Medium should be free of Ca⁺⁺, Mg⁺⁺, and biotin.

Directions for Use – Manual EasySep™ Protocols

See page 1 for Sample Preparation and Recommended Medium. Refer to Tables 1 and 2 for detailed instructions regarding the EasySep™ procedure for each magnet.

Table 1. EasySep™ Mouse Naïve CD4+ T Cell Isolation Kit Protocol

		EASYSEP™ MAGNETS	
STEP	INSTRUCTIONS	 EasySep™ (Catalog #18000)	 “The Big Easy” (Catalog #18001)
1	Prepare sample at the indicated cell concentration within the volume range.	1 x 10 ⁸ cells/mL 0.1 - 2 mL	1 x 10 ⁸ cells/mL 0.25 - 8 mL
	Add FcR blocker to sample.	20 µL/mL of sample	20 µL/mL of sample
2	Add sample to required tube.	5 mL (12 x 75 mm) polystyrene round-bottom tube (e.g. Catalog #38007)	14 mL (17 x 95 mm) polystyrene round-bottom tube (e.g. Catalog #38008)
3	Add Isolation Cocktail to sample. NOTE: Do not vortex cocktail.	50 µL/mL of sample	50 µL/mL of sample
	Mix and incubate.	RT for 7.5 minutes	RT for 7.5 minutes
4	Add Depletion Cocktail to sample. NOTE: Do not vortex cocktail.	50 µL/mL of sample	50 µL/mL of sample
	Mix and incubate.	RT for 2.5 minutes	RT for 2.5 minutes
5	Vortex RapidSpheres™. NOTE: Particles should appear evenly dispersed.	30 seconds	30 seconds
6	Add RapidSpheres™ to sample.	75 µL/mL of sample	75 µL/mL of sample
	Mix and incubate.	RT for 2.5 minutes	RT for 2.5 minutes
7	Add recommended medium to top up the sample to the indicated volume. Mix by gently pipetting up and down 2 - 3 times.	Top up to 2.5 mL	<ul style="list-style-type: none"> • Top up to 5 mL for samples < 4 mL • Top up to 10 mL for samples ≥ 4 mL
	Place the tube (without lid) into the magnet and incubate.	RT for 2.5 minutes	RT for 2.5 minutes
8	Pick up the magnet, and in one continuous motion invert the magnet and tube,* pouring the enriched cell suspension into a new tube.	Isolated cells are ready for use	Isolated cells are ready for use

RT - room temperature (15 - 25°C)

* Leave the magnet and tube inverted for 2 - 3 seconds, then return upright. Do not shake or blot off any drops that may remain hanging from the mouth of the tube.

Table 2. EasySep™ Mouse Naïve CD4+ T Cell Isolation Kit Protocol

		EASYSEP™ MAGNETS	
STEP	INSTRUCTIONS	EasyEights™ (Catalog #18103)	
		5 mL tube	14 mL tube
1	Prepare sample at the indicated cell concentration within the volume range.	1 x 10 ⁸ cells/mL 0.1 - 2 mL	1 x 10 ⁸ cells/mL 0.25 - 8 mL
	Add FcR blocker to sample.	20 µL/mL of sample	20 µL/mL of sample
2	Add sample to required tube.	5 mL (12 x 75 mm) polystyrene round-bottom tube (e.g. Catalog #38007)	14 mL (17 x 95 mm) polystyrene round-bottom tube (e.g. Catalog #38008)
3	Add Isolation Cocktail to sample. NOTE: Do not vortex cocktail.	50 µL/mL of sample	50 µL/mL of sample
	Mix and incubate.	RT for 7.5 minutes	RT for 7.5 minutes
4	Add Depletion Cocktail to sample. NOTE: Do not vortex cocktail.	50 µL/mL of sample	50 µL/mL of sample
	Mix and incubate.	RT for 2.5 minutes	RT for 2.5 minutes
5	Vortex RapidSpheres™. NOTE: Particles should appear evenly dispersed.	30 seconds	30 seconds
6	Add RapidSpheres™ to sample.	75 µL/mL of sample	75 µL/mL of sample
	Mix and incubate.	RT for 2.5 minutes	RT for 2.5 minutes
7	Add recommended medium to top up sample to the indicated volume. Mix by gently pipetting up and down 2 - 3 times.	Top up to 2.5 mL	<ul style="list-style-type: none"> • Top up to 5 mL for samples < 4 mL • Top up to 10 mL for samples ≥ 4 mL
	Place the tube (without lid) into the magnet and incubate.	RT for 10 minutes	RT for 10 minutes
8	Carefully pipette** (do not pour) the enriched cell suspension into a new tube.	Isolated cells are ready for use	Isolated cells are ready for use


RT - room temperature (15 - 25°C)

** Collect the entire supernatant, all at once, into a single pipette (e.g. for EasyEights™ 5 mL tube, use a 2 mL serological pipette [Catalog #38002]; for EasyEights™ 14 mL tube, use a 10 mL serological pipette [Catalog #38004]).

Directions for Use – Fully Automated RoboSep™ Protocol

See page 1 for Sample Preparation and Recommended Medium. Refer to Table 3 for detailed instructions regarding the RoboSep™ procedure.

Table 3. RoboSep™ Mouse Naïve CD4+ T Cell Isolation Kit Protocol

STEP	INSTRUCTIONS	RoboSep™ (Catalog #21000)	
1	Prepare sample at the indicated cell concentration within the volume range.	1 x 10 ⁸ cells/mL 1 - 8 mL	
	Add FcR blocker to sample.	20 µL/mL of sample	
2	Add sample to required tube.	14 mL (17 x 95 mm) polystyrene round-bottom tube (e.g. #38008)	
3	Select protocol.	Mouse Naïve CD4+ T Cell Isolation 19765v2 (19852_18766)	
4	Vortex RapidSpheres™. NOTE: Particles should appear evenly dispersed.	30 seconds	
5	Load the carousel.	Follow on-screen prompts	
	Start the protocol.	Press the green "Run" button	
6	Unload the carousel when the run is complete.	Isolated cells are ready for use	

Notes and Tips

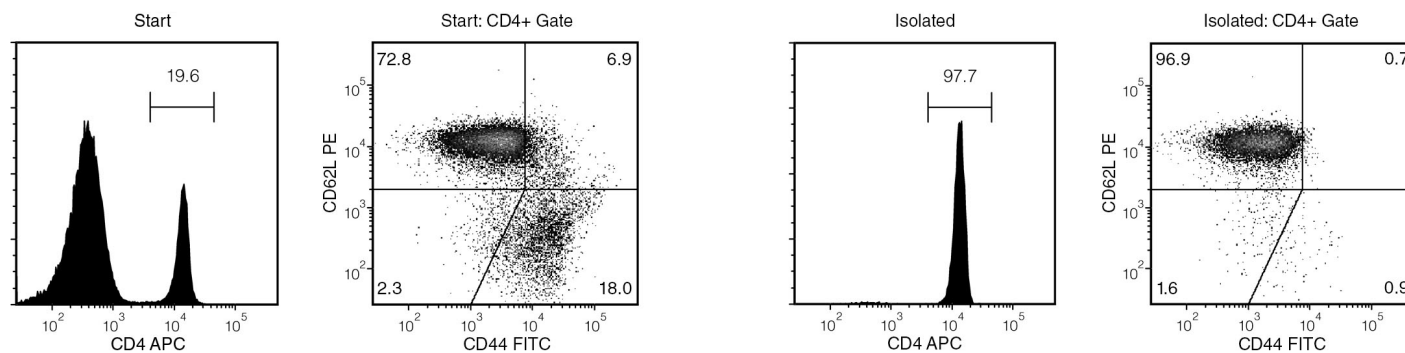
ASSESSING PURITY

For purity assessment of naïve CD4+ T cells (CD4+CD44^{low}CD62L^{high}) by flow cytometry, use the following fluorochrome-conjugated antibody clones:

- Anti-Mouse CD4 Antibody, Clone RM4-5 (Catalog #60017), and
- Anti-mouse CD44 antibody, clone 5035-41.1D, and
- Anti-Mouse CD62L (L-Selectin) Antibody, Clone MEL-14 (Catalog #60109)

The anti-mouse CD44 (Ly-24) clone 5035-41.1D is not blocked by the anti-CD44 clone used in EasySep™ Mouse Naïve CD4+ T Cell Isolation Cocktail. The 5035-41.1D clone only recognizes the Ly-24.2 isoform, which is expressed by C57BL/6, C57BL/10, C57/L, C58A, AKR, 129, SJL, NZB, C3H, CE, and CBA/H mouse strains. The anti-mouse/human CD44 clone IM7 is not recommended for assessing purity, as it is blocked by the anti-mouse CD44 antibody clone used in EasySep™ Mouse Naïve CD4+ T Cell Isolation Cocktail.

Data



Starting with mouse splenocytes from an uninfected mouse, the naïve CD4+ T cell content (CD4+CD44^{low}CD62L^{high}) of the isolated fraction typically ranges from 87.6 - 95.6%. In the above example, the purities of the start and final isolated fractions are 14.3% and 94.7%, respectively.

PRODUCTS ARE FOR RESEARCH USE ONLY AND NOT INTENDED FOR HUMAN OR ANIMAL DIAGNOSTIC OR THERAPEUTIC USES UNLESS OTHERWISE STATED. FOR ADDITIONAL INFORMATION ON QUALITY AT STEMCELL, REFER TO WWW.STEMCELL.COM/COMPLIANCE.

Copyright © 2022 by STEMCELL Technologies Inc. All rights reserved including graphics and images. STEMCELL Technologies & Design, STEMCELL Shield Design, Scientists Helping Scientists, EasySep, RoboSep, and RapidSpheres are trademarks of STEMCELL Technologies Canada Inc. All other trademarks are the property of their respective holders. While STEMCELL has made all reasonable efforts to ensure that the information provided by STEMCELL and its suppliers is correct, it makes no warranties or representations as to the accuracy or completeness of such information.