

EasySep™ HLA Chimerism Whole Blood CD66b Positive Selection Kit



Scientists Helping Scientists™ | WWW.STEMCELL.COM

TOLL FREE PHONE 1 800 667 0322 • PHONE +1 604 877 0713
 INFO@STEMCELL.COM • TECHSUPPORT@STEMCELL.COM
 FOR GLOBAL CONTACT DETAILS VISIT OUR WEBSITE

For processing 60 mL whole blood

Catalog #17882

Positive Selection

Document #10000003606 | Version 02

Description

Isolate highly purified CD66b+ cells from fresh human whole blood by immunomagnetic positive selection.

- Fast and easy-to-use
- Up to 99% purity
- No columns required

This kit targets CD66b+ cells for positive selection with an antibody recognizing the CD66b surface marker. Desired cells are labeled with antibodies and magnetic particles, and separated without columns using an EasySep™ magnet. Unwanted cells are simply poured off, while desired cells remain in the tube. Isolated cells are immediately available for downstream applications such as flow cytometry, culture, or DNA/RNA extraction for lineage-specific chimerism analysis.

Component Descriptions

COMPONENT NAME	COMPONENT #	QUANTITY	STORAGE	SHELF LIFE	FORMAT
EasySep™ HLA Chimerism Whole Blood CD66b Positive Selection Cocktail	17882C	3 x 1 mL	Store at 2 - 8°C. Do not freeze.	Stable until expiry date (EXP) on label.	A combination of monoclonal antibodies in PBS with 2% HPCD and 0.09% rHA.
EasySep™ Dextran RapidSpheres™ 50102	50102	3 x 1 mL	Store at 2 - 8°C. Do not freeze.	Stable until expiry date (EXP) on label.	A suspension of magnetic particles in water.
EasySep™ Red Blood Cell Lysis Buffer, 10X Concentrate	20110	1 x 10 mL	Store at 15 - 25°C. Do not freeze.	Stable until expiry date (EXP) on label.	A 10X concentrated red blood cell lysis reagent.

HPCD - 2-hydroxypropyl-β-cyclodextrin; PBS - phosphate-buffered saline; rHA - recombinant human albumin

Components may be shipped at room temperature (15 - 25°C) but should be stored as indicated above.

Additional Reagent Stability Information

REAGENT NAME	STORAGE	SHELF LIFE
EasySep™ Red Blood Cell Lysis Buffer (1X dilution)	Store at 2 - 8°C. Do not freeze.	Stable for up to 3 months. Do not exceed the expiry date (EXP) of the original component.

Sample Preparation

For available fresh samples, see www.stemcell.com/primarycells.

PERIPHERAL BLOOD

Collect whole blood in a blood collection tube containing anticoagulant.


Recommended Medium

EasySep™ Buffer (Catalog #20144), RoboSep™ Buffer (Catalog #20104), or PBS containing 2% fetal bovine serum (FBS) and 1 mM EDTA. Medium should be free of Ca⁺⁺ and Mg⁺⁺.

Directions for Use – Manual EasySep™ Protocols

See page 1 for Sample Preparation and Recommended Medium. Refer to Table 1 for detailed instructions regarding the EasySep™ procedure.

Table 1. EasySep™ HLA Chimerism Whole Blood CD66b Positive Selection Kit Protocol

		EASYSEP™ MAGNET	
STEP	INSTRUCTIONS	“The Big Easy” (Catalog #18001) 	
1	Prepare sample within the volume range.	0.25 - 4.5 mL	
	Add sample to required tube.	14 mL (17 x 95 mm) polystyrene round-bottom tube (e.g. Catalog #38008)	
2	Add 1X EasySep™ RBC Lysis Buffer to sample.	Equal volume to sample	
3	Add Selection Cocktail to sample. NOTE: Do not vortex cocktail.	25 µL/mL of diluted sample	
	Mix and incubate.	RT for 3 minutes	
4	Vortex RapidSpheres™. NOTE: Particles should appear evenly dispersed.	30 seconds	
5	Add RapidSpheres™ to sample.	25 µL/mL of diluted sample	
	Mix and incubate.	RT for 3 minutes	
6	Add recommended medium to top up the sample to the indicated volume. Mix by gently pipetting up and down 2 - 3 times.	<ul style="list-style-type: none"> • Top up to 5 mL for samples < 4 mL • Top up to 10 mL for samples ≥ 4 mL 	
	Place the tube (without lid) into the magnet and incubate.	RT for 3 minutes	
7	Pick up the magnet, and in one continuous motion invert the magnet and tube,* pouring off the supernatant. Remove the tube from the magnet; this tube contains the isolated cells.	Discard supernatant	
8	Repeat steps as indicated.	Steps 6 and 7, two more times (total of 3 x 3-minute separations)	
9	Resuspend cells in desired medium. Be sure to collect cells from the sides of the tube.	Isolated cells are ready for use	

RBC - red blood cell; RT - room temperature (15 - 25°C)

* Leave the magnet and tube inverted for 2 - 3 seconds, then return upright. Do not shake or blot off any drops that may remain hanging from the mouth of the tube.

Table 2. EasySep™ HLA Chimerism Whole Blood CD66b Positive Selection Kit Protocol

		EASYSEP™ MAGNET
		EasyEights™ (Catalog #18103)
		14 mL tube
1	Prepare sample within the volume range.	0.5 - 4.5 mL
	Add sample to required tube.	14 mL (17 x 95 mm) polystyrene round-bottom tube (e.g. Catalog #38008)
2	Add 1X EasySep™ RBC Lysis Buffer to sample.	Equal volume to sample
3	Add Selection Cocktail to sample. NOTE: Do not vortex cocktail.	25 µL/mL of diluted sample
	Mix and incubate.	RT for 3 minutes
4	Vortex RapidSpheres™. NOTE: Particles should appear evenly dispersed.	30 seconds
5	Add RapidSpheres™ to sample.	25 µL/mL of diluted sample
	Mix and incubate.	RT for 3 minutes
6	Add recommended medium to top up the sample to the indicated volume. Mix by gently pipetting up and down 2 - 3 times.	<ul style="list-style-type: none"> • Top up to 5 mL for samples < 4 mL • Top up to 10 mL for samples ≥ 4 mL
	Place the tube (without lid) into the magnet and incubate.	RT for 10 minutes
7	Carefully pipette** (do not pour) off the supernatant. Remove the tube from the magnet; this tube contains the isolated cells.	Discard supernatant
8	Add recommended medium to top up the sample to the indicated volume. Mix by gently pipetting up and down 2 - 3 times.	<ul style="list-style-type: none"> • Top up to 5 mL for samples < 4 mL • Top up to 10 mL for samples ≥ 4 mL
	Place the tube (without lid) into the magnet and incubate.	RT for 5 minutes
9	Carefully pipette** (do not pour) off the supernatant. Remove the tube from the magnet; this tube contains the isolated cells.	Discard supernatant
10	Repeat steps as indicated.	Steps 8 and 9 (total of 1 x 10-minute and 2 x 5-minute separations)
11	Resuspend cells in desired medium. Be sure to collect cells from the sides of the tube.	Isolated cells are ready for use


RT - room temperature (15 - 25°C)

** Collect the entire supernatant, all at once, into a single pipette (e.g. for the EasyEights™ 14 mL tube, use a 10 mL serological pipette [Catalog #38004]).

Directions for Use – Fully Automated RoboSep™ Protocol

See page 1 for Sample Preparation and Recommended Medium. Refer to Table 3 for detailed instructions regarding the RoboSep™ procedure.

Table 3. RoboSep™ HLA Chimerism Whole Blood CD66b Positive Selection Kit Protocol

STEP	INSTRUCTIONS	RoboSep™ (Catalog #21000)	
1	Prepare sample within the volume range.	1 - 4.5 mL	
	Add sample to required tube.	14 mL (17 x 95 mm) polystyrene round-bottom tube (e.g. Catalog #38008)	
2	Add 1X EasySep™ RBC Lysis Buffer to sample.	Equal volume to sample	
3	Select protocol. NOTE: Enter volume.	HLA Chimerism CD66b WB Positive Selection 17882 NOTE: Enter diluted sample volume.	
4	Vortex RapidSpheres™. NOTE: Particles should appear evenly dispersed.	30 seconds	
5	Load the carousel.	Follow on-screen prompts	
	Start the protocol.	Press the green "Run" button	
6	Unload the carousel when the run is complete. Remove the tube containing the isolated cells and resuspend in desired medium. Be sure to collect cells from the sides of the tube.	Isolated cells are ready for use	

Notes and Tips

EASYSEPTM RED BLOOD CELL LYSIS BUFFER

EasySep™ Red Blood Cell Lysis Buffer is supplied as a 10X concentrate. Prepare 1X lysis buffer at least 1 hour before use by adding 1 part 10X lysis buffer to 9 parts distilled or Type 1 water. Mix gently and completely before use.

ASSESSING PURITY

For purity assessment by flow cytometry, use the following fluorochrome-conjugated antibody clone:

- Anti-Human CD66b Antibody, Clone G10F5 (Catalog #60086; partially blocked)

The following method can also be used:

- Use a fluorochrome-conjugated secondary antibody, such as Goat Anti-Mouse IgG (H+L) Antibody, Polyclonal (Catalog #60138).

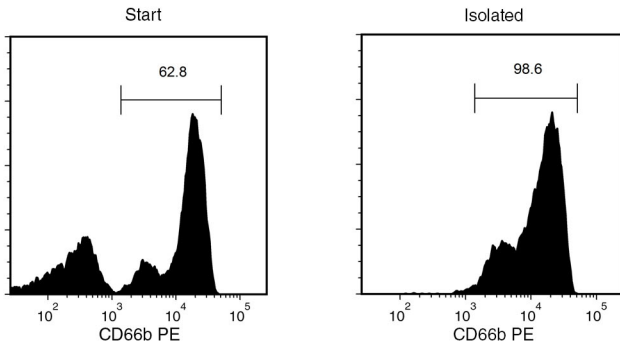
DONOR VARIABILITY

Certain donors express one or more soluble serum factors that can cause cross-linking with magnetic particles. This may result in visible aggregates in the enriched cell fraction following positive selection. These aggregates may appear as a distinct, high side-scatter population on FSC vs. SSC plots during flow cytometry analysis of the enriched fraction. This population consists solely of particles, with no cells or platelets present, as determined by staining with fluorescently-labeled antibodies against dextran, CD41, and CD45.

Potential aggregation can be avoided by washing away the donor plasma. Dilute the sample 2-fold in the recommended medium, and centrifuge at 300 x g for 10 minutes. Remove as much plasma as possible without disturbing the white and red blood cells, then resuspend the sample to the original volume with recommended medium before beginning the separation procedure.

If the samples have not been washed, any aggregates can be gated out during flow cytometry analysis of the enriched fraction based on their FSC vs. SSC characteristics, or by their lack of CD45 expression.

Data



Starting with whole blood, the CD66b+ cell content of the isolated fraction is typically $98.0 \pm 0.8\%$ (mean \pm SD using “The Big Easy” EasySep™ Magnet). In the above example, the purities of the start and final isolated fractions are 62.8% and 98.6%, respectively.

PRODUCTS ARE FOR RESEARCH USE ONLY AND NOT INTENDED FOR HUMAN OR ANIMAL DIAGNOSTIC OR THERAPEUTIC USES UNLESS OTHERWISE STATED. FOR ADDITIONAL INFORMATION ON QUALITY AT STEMCELL, REFER TO WWW.STEMCELL.COM/COMPLIANCE.

Copyright © 2021 by STEMCELL Technologies Inc. All rights reserved including graphics and images. STEMCELL Technologies & Design, STEMCELL Shield Design, Scientists Helping Scientists, EasyEights, EasySep, RapidSpheres, and RoboSep are trademarks of STEMCELL Technologies Canada Inc. All other trademarks are the property of their respective holders. While STEMCELL has made all reasonable efforts to ensure that the information provided by STEMCELL and its suppliers is correct, it makes no warranties or representations as to the accuracy or completeness of such information.