

# EasySep™ HLA Chimerism Whole Blood Lymphoid Positive Selection Kit

For processing 60 mL whole blood

Catalog #17873

Positive Selection

Document #10000003594 | Version 01



Scientists Helping Scientists™ | [WWW.STEMCELL.COM](http://WWW.STEMCELL.COM)

TOLL FREE PHONE 1 800 667 0322 • PHONE +1 604 877 0713

[INFO@STEMCELL.COM](mailto:INFO@STEMCELL.COM) • [TECHSUPPORT@STEMCELL.COM](mailto:TECHSUPPORT@STEMCELL.COM)

FOR GLOBAL CONTACT DETAILS VISIT OUR WEBSITE

## Description

Isolate highly purified lymphoid cells from fresh human whole blood or buffy coat by immunomagnetic positive selection.

- Fast and easy-to-use
- Up to 99% purity
- No columns required

This kit targets lymphoid cells for positive selection with antibodies recognizing the CD3 and CD19 surface markers. Desired cells are labeled with antibodies and magnetic particles, and separated without columns using an EasySep™ magnet. Unwanted cells are simply poured off, while desired cells remain in the tube. Isolated cells are immediately available for downstream applications such as flow cytometry, culture, or DNA/RNA extraction for lineage-specific chimerism analysis.

## Component Descriptions

COMPONENT NAME	COMPONENT #	QUANTITY	STORAGE	SHELF LIFE	FORMAT
EasySep™ HLA Chimerism Whole Blood Lymphoid Positive Selection Cocktail	17873C	3 x 1 mL	Store at 2 - 8°C. Do not freeze.	Stable until expiry date (EXP) on label.	A combination of monoclonal antibodies in PBS. Includes an Fc receptor blocking antibody.
EasySep™ Dextran RapidSpheres™ 50101	50101	3 x 1 mL	Store at 2 - 8°C. Do not freeze.	Stable until expiry date (EXP) on label.	A suspension of magnetic particles in water.
EasySep™ Red Blood Cell Lysis Buffer, 10X Concentrate	20110	1 x 10 mL	Store at 15 - 25°C. Do not freeze.	Stable until expiry date (EXP) on label.	A 10X concentrated red blood cell lysis reagent.

PBS - phosphate-buffered saline

Components may be shipped at room temperature (15 - 25°C) but should be stored as indicated above.

## Additional Reagent Stability Information

REAGENT NAME	STORAGE	SHELF LIFE
EasySep™ Red Blood Cell Lysis Buffer (1X dilution)	Store at 2 - 8°C. Do not freeze.	Stable for up to 3 months. Do not exceed the expiry date (EXP) of the original component.

## Sample Preparation

For available fresh and frozen samples, see [www.stemcell.com/primarycells](http://www.stemcell.com/primarycells).

### PERIPHERAL BLOOD

Collect whole blood in a blood collection tube containing anticoagulant.

### BUFFY COAT

1. Add an equal volume of recommended medium to whole blood.
2. Centrifuge at 800 x g for 10 minutes at room temperature (15 - 25°C) with the brake off.
3. Remove the concentrated leukocyte band (this is the buffy coat), plus a small portion of the plasma and concentrated red blood cells (RBCs). The target is to concentrate the leukocytes approximately 5-fold while maintaining the same hematocrit (e.g. collect 2 mL of buffy coat when starting with 10 mL of whole blood).
4. Transfer a maximum of 4.5 mL of buffy coat to the required tube (see Tables 1 - 2).

### LEUKOREDUCTION SYSTEM CHAMBER

If processing leukoreduction system chamber (LRSC) samples, refer to the applicable PIS (Document #10000006455).


## Recommended Medium

EasySep™ Buffer (Catalog #20144), RoboSep™ Buffer (Catalog #20104), or PBS containing 2% fetal bovine serum (FBS) and 1 mM EDTA. Medium should be free of Ca++ and Mg++.

## Directions for Use – Manual EasySep™ Protocols

See page 1 for Sample Preparation and Recommended Medium. Refer to Table 1 for detailed instructions regarding the EasySep™ procedure.

**Table 1. EasySep™ HLA Chimerism Whole Blood Lymphoid Positive Selection Kit Protocol**

		EASYSEP™ MAGNET
		<p><b>“The Big Easy” (Catalog #18001)</b></p> 
1	Prepare sample within the volume range.	0.5 - 4.5 mL
	Add sample to required tube.	14 mL (17 x 95 mm) polystyrene round-bottom tube (e.g. Catalog #38008)
2	Add 1X EasySep™ RBC Lysis Buffer to sample.	Equal volume to sample
3	Add Selection Cocktail to sample.	25 µL/mL of diluted sample
	Mix and incubate.	RT for 5 minutes
4	Vortex RapidSpheres™. NOTE: Particles should appear evenly dispersed.	30 seconds
5	Add RapidSpheres™ to sample.	25 µL/mL of diluted sample
	Mix and incubate.	RT for 5 minutes
6	Add recommended medium to top up the sample to the indicated volume. Mix by gently pipetting up and down 2 - 3 times.	<ul style="list-style-type: none"> <li>• Top up to 5 mL for diluted samples ≤ 4 mL</li> <li>• Top up to 10 mL for diluted samples &gt; 4 mL</li> </ul>
	Place the tube (without lid) into the magnet and incubate.	RT for 5 minutes
7	Pick up the magnet, and in one continuous motion invert the magnet and tube,* pouring off the supernatant. Remove the tube from the magnet; this tube contains the isolated cells.	Discard supernatant
8	Repeat steps as indicated.	Steps 6 and 7 (total of 3 x 5-minute separations)
9	Resuspend cells in desired medium. Be sure to collect cells from the sides of the tube.	Isolated cells are ready for use


RT - room temperature (15 - 25°C)

\* Leave the magnet and tube inverted for 2 - 3 seconds, then return upright. Do not shake or blot off any drops that may remain hanging from the mouth of the tube.

## Directions for Use – Fully Automated RoboSep™ Protocol

See page 1 for Sample Preparation and Recommended Medium. Refer to Table 2 for detailed instructions regarding the RoboSep™ procedure.

**Table 2. RoboSep™ HLA Chimerism Whole Blood Lymphoid Positive Selection Kit Protocol**

STEP	INSTRUCTIONS	RoboSep™ (Catalog #20000 and #21000)	
1	Prepare sample within the volume range.	0.5 - 4.5 mL	
	Add sample to required tube.	14 mL (17 x 95 mm) polystyrene round-bottom tube (e.g. Catalog #38008)	
2	Add 1X EasySep™ RBC Lysis Buffer to sample.	Equal volume to sample	
3	Select protocol.	HLA Chimerism Lymphoid WB Positive Selection 17873	
4	Vortex RapidSpheres™. NOTE: Particles should appear evenly dispersed.	30 seconds	
5	Load the carousel.	Follow on-screen prompts	
	Start the protocol.	Press the green "Run" button	
6	Unload the carousel when the run is complete. Remove the tube containing the isolated cells and resuspend in desired medium. Be sure to collect cells from the sides of the tube.	Isolated cells are ready for use	

## Notes and Tips

### EASYSEPTM RED BLOOD CELL LYSIS BUFFER

EasySep™ Red Blood Cell Lysis Buffer is supplied as a 10X concentrate. Prepare 1X lysis buffer at least 1 hour before use by adding 1 part 10X lysis buffer to 9 parts distilled or Type 1 water\*. Mix gently and completely before use.

\*Type I water refers to ultrapure water suitable for use in analytical procedures. It is defined by the American Society for Testing and Materials (ASTM) as having a resistivity of > 18 MΩ-cm, a conductivity of < 0.056 μS/cm, and < 50 ppb of total organic carbons (TOC).

### ASSESSING PURITY

The EasySep™ Human Whole Blood Lymphoid Positive Selection Cocktail uses antibody clones known to block some anti-CD3 and anti-CD19 antibody clones used to assess purity. For purity assessment of CD3+CD19+ cells by flow cytometry, use the following fluorochrome-conjugated antibody clones:

- Anti-Human CD2 Antibody, Clone RPA-2.10 (Catalog #60007), and
- Anti-Human CD20 Antibody, Clone 2H7 (Catalog #60008)

The following method can also be used:

- Use a fluorochrome-conjugated secondary antibody, such as Goat Anti-Mouse IgG (H+L) Antibody, Polyclonal (Catalog #60138).

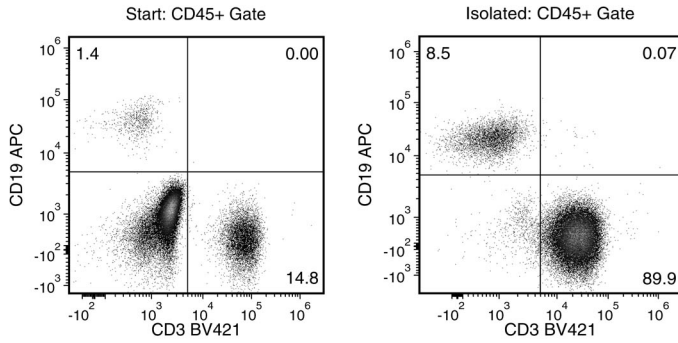
### DONOR VARIABILITY

Certain donors express one or more soluble serum factors that can cause cross-linking with magnetic particles. This may result in visible aggregates in the enriched cell fraction following positive selection. These aggregates may appear as a distinct, high side-scatter population on FSC vs. SSC plots during flow cytometry analysis of the enriched fraction. This population consists solely of particles, with no cells or platelets present, as determined by staining with fluorescently labeled antibodies against dextran, CD41 and CD45.

Potential aggregation can be avoided by washing away the donor plasma. Dilute the sample 2-fold in the recommended medium, and centrifuge at 300 x g for 10 minutes. Remove as much plasma as possible without disturbing the white and red blood cells, then resuspend sample to original volume with recommended medium before beginning the separation procedure.

If the samples have not been washed, any aggregates can be gated out during flow cytometry analysis of the enriched fraction based on their FSC vs. SSC characteristics, or by their lack of CD45 expression.

## Data



Starting with human whole blood, the lymphoid cell content (CD3+CD19+) of the isolated fraction is typically  $99.5 \pm 0.2\%$  (gated on CD45; mean  $\pm$  SD using "The Big Easy" EasySep™ Magnet). In the above example, the purities of the start and final isolated fractions are 16.2% and 98.5%, respectively.

NOTE: Red blood cells were removed from the start sample by lysis prior to flow cytometry.

STEMCELL TECHNOLOGIES INC.'S QUALITY MANAGEMENT SYSTEM IS CERTIFIED TO ISO 13485. PRODUCTS ARE FOR RESEARCH USE ONLY AND NOT INTENDED FOR HUMAN OR ANIMAL DIAGNOSTIC OR THERAPEUTIC USES UNLESS OTHERWISE STATED.

Copyright © 2020 by STEMCELL Technologies Inc. All rights reserved including graphics and images. STEMCELL Technologies & Design, STEMCELL Shield Design, Scientists Helping Scientists, EasySep, RapidSpheres, and RoboSep are trademarks of STEMCELL Technologies Canada Inc. All other trademarks are the property of their respective holders. While STEMCELL has made all reasonable efforts to ensure that the information provided by STEMCELL and its suppliers is correct, it makes no warranties or representations as to the accuracy or completeness of such information.